

WAsc ~~2192~~
2192 ●
WAI 588 ●
WANBD 902/25

CHIMNEY CAP
LIST

W4NAD 902/25
WASC 2192
7171 588

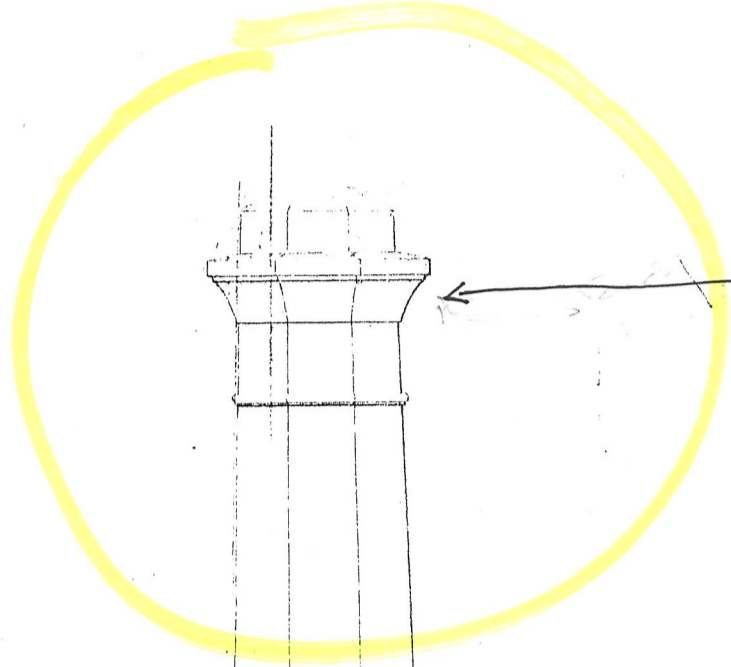
With reference to Item 1. A.C. 1860-61.

and With reference to Item 1 A.C. 1060-61.

27 NOV 2006

24.11.06.

167



I think the sandstone blocks
are from the chimney caps

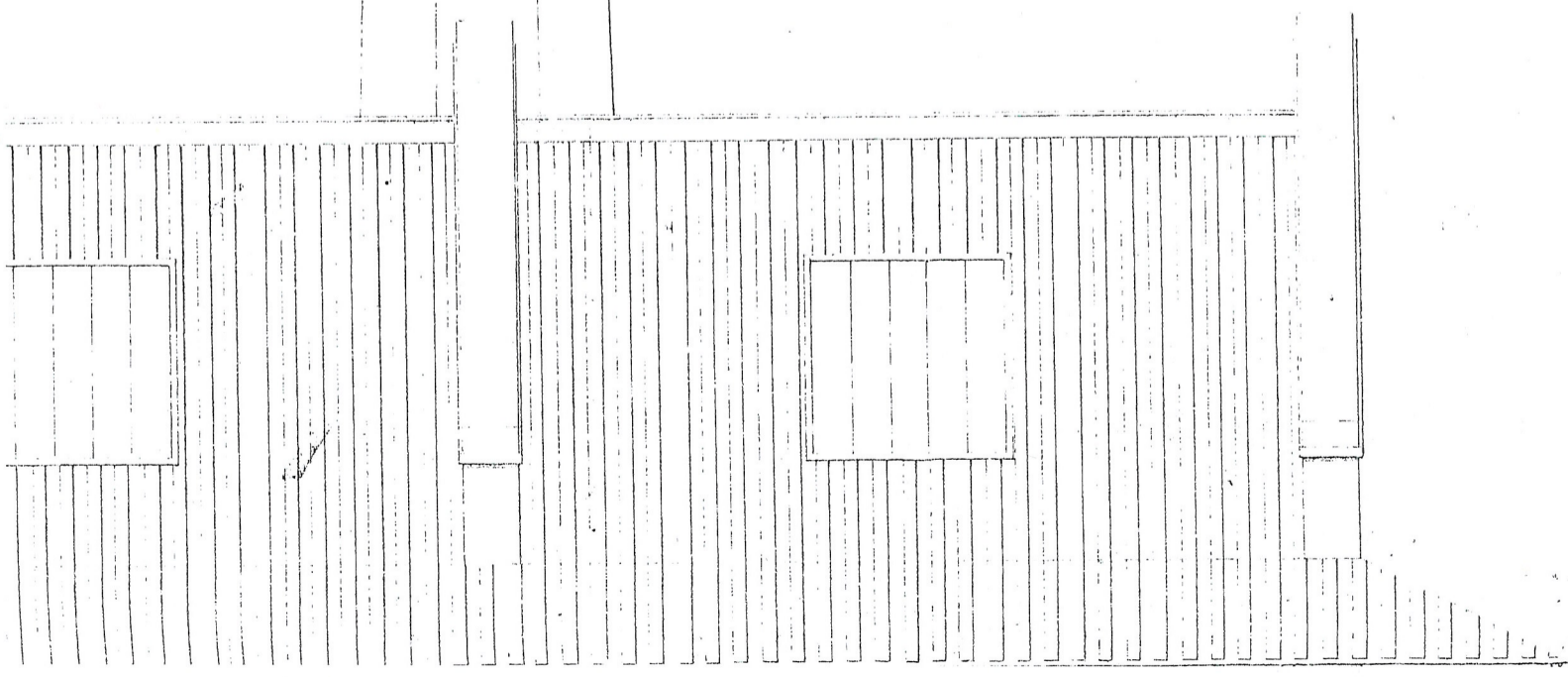
I also think that these are
better drawings in the collection.

26.5

Days

How

L157



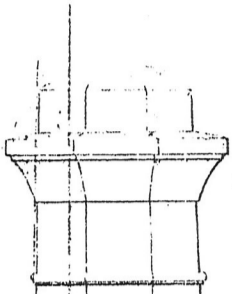
With reference to Item 1. A.C. 1860-61.

and With reference to Item 1 A.C. 106⁷ 6⁸

27 NOV 2006

24.11.06.

~~167~~



I think the sandstone blocks
are from the chimney caps

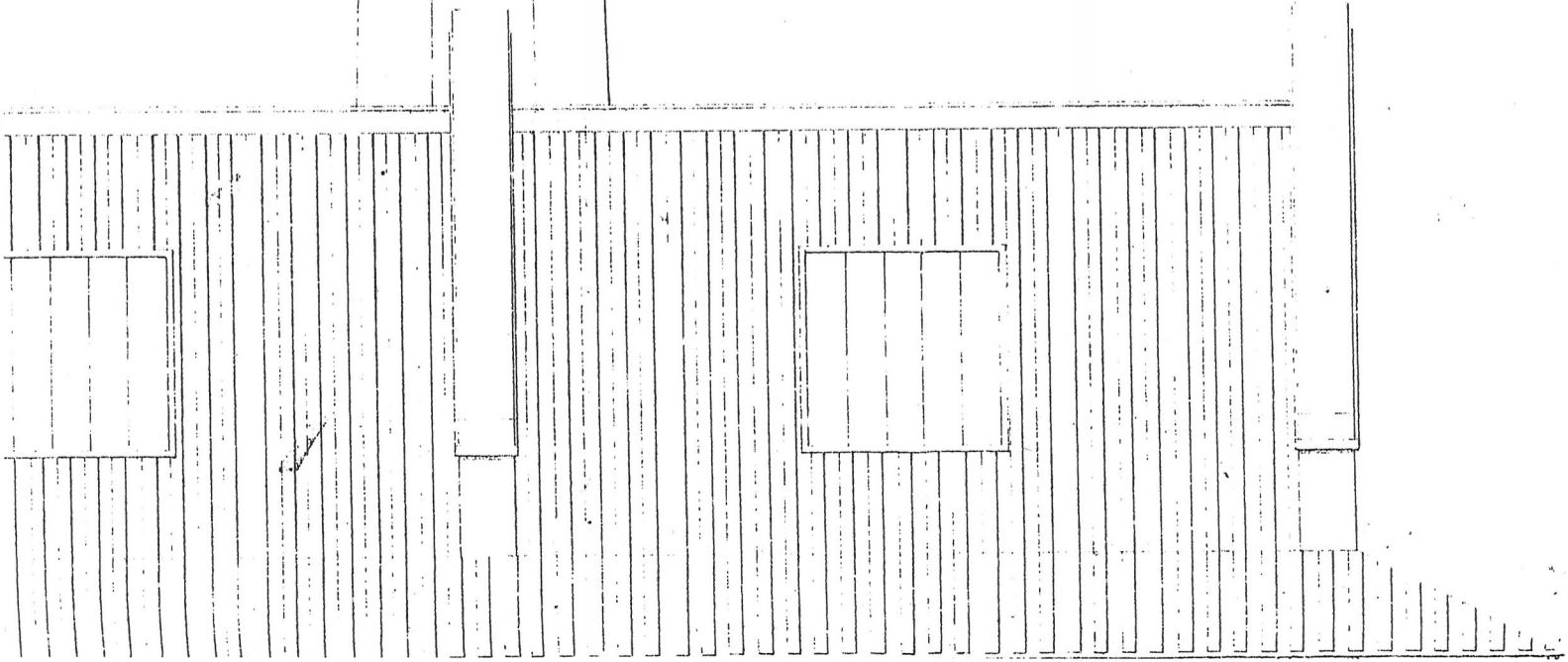
I also think that these are
better drawings in the collection.

26 D

Dayne

Thurs

L157



With reference to Item 1. A.C. 1860-61.

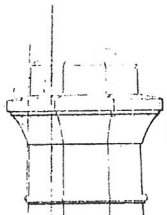
WANKI
902/25

and With reference to Item 1 A.C. 1860-61.

27 NOV 2006

24.11.06.

~~167~~



I think the sandstone blocks
are from the chimney caps

I also think that there are
better drawings in the collection.

263

Dagge

There

L157

