

THE ROYAL GUNPOWDER FACTORY

WALTHAM ABBEY

50-110



THE ROYAL GUNPOWDER FACTORY - WALTHAM ABBEY

NUMBER	OLD SERIES 50	RCHME NUMBER	N.G.R. TL
NAME/FUNCTION Magazine		START DATE	END DATE
NO PHOTOGRAPHY AVAILABLE			
CARTOGRAPHIC DEPICTION		DOCUMENTARY REFERENCES	
PHOTOGRAPHY HISTORIC		PHOTOGRAPHY RCHME	
RELATIONSHIPS WITH OTHER MONUMENTS ASSOCIATED WITH:			
CONDITION Buried			
<p>DESCRIPTION</p> <p>1) CONSTRUCTIONAL MATERIAL Brick</p> <p>4) DIMENSIONS i) L 6.75m ii) W 4.85m</p> <p>5) The remains of the demolished magazine may be traced as brick foundations. The remains indicate a porch on the canal side and buttresses on the west side.</p>			

THE ROYAL GUNPOWDER FACTORY - WALTHAM ABBEY

NUMBER	OLD SERIES 62	RCHME NUMBER	N.G.R. TL 37523 02062
--------	------------------	--------------	--------------------------

NAME/FUNCTION Mixing House No.3	START DATE 1904	END DATE 1945?
------------------------------------	--------------------	-------------------



<p>CARTOGRAPHIC DEPICTION</p> <p>1923 WASC 900/84 ; 62 Mixing House No.3</p>	<p>DOCUMENTARY REFERENCES</p> <p>1908 RGPF Ledger WASC 1509 + WASC 1764 ; Mixing House c1925 RGPF Ledger WASC 1680 ; Mixing House c1945 RGPF Ledger WASC 1508 ; Mixing House No.3</p> <p>1972 ERDE List ; Mixing House No.3/Burnt out 1992 RARDE List ; Mixing House No.3/Burnt out</p>
--	---

<p>PHOTOGRAPHY HISTORIC</p> <p>RCHME NEG No. BB92/16737 (also PRO Suppl 5/861 photo. No. 251) Mixing House Edmonsey (c1909)</p> <p>Proc Court of Inquirey Explosion at RGPF 20-Apr-1940 10 photographs</p>	<p>PHOTOGRAPHY RCHME</p> <p>1) 206/U/7 From west 206/U/8 Nitroglycerine tunnel from west 206/U/8 Steam heating pipes and central hole 206/U/10 From west</p>
---	---

RELATIONSHIPS WITH OTHER MONUMENTS

ASSOCIATED WITH: E5, RCHM 186, RCHM 188, RCHM 189

CONDITION Good



DESCRIPTION

1) CONSTRUCTIONAL MATERIAL
Cast concrete and earthwork

2) ROOF MATERIALS AND STRUCTURE
Galvanised metal

3) POWER SOURCE
Electricity and steam heating

4) DIMENSIONS iv) DIA 10.62m

5) The mixing house, formerly a timber round house with a low conical roof supported by a central pillar, was housed within a cast concrete revetment wall 2.1m in height. This in turn was surrounded by an earth traverse. The roundhouse was separated from the revetment wall by a gully 68.5cm wide and 25cm in depth. The roundhouse was 9.3m in diameter and was bolted directly to the concrete floor slab. At the centre of the building is a post hole 17cm x 17cm. A thin groove around the edge of the concrete floor may indicate that the walls were covered by asbestos sheets. Guncotton was brought into the mixing house from the adjacent canal through a covered entrance porch sloping gently down into the building. The superstructure to the porch was supported on a low concrete wall that overlaid the inner revetment wall.

Nitroglycerine was run into the building along a lead lined gutter from washing house E5. The nitroglycerine gutter entered the building along a tunnel through the eastern side of the traverse. The remains of the bolts that supported the gutter are visible along the southern side of the tunnel. Once inside the building the nitroglycerine was temporarily stored within a lead tank, the metal fixing bolts remain in the floor. In front of this tank is a J shaped concrete hole 158cm x 135cm and 45cm deep, this was formerly lead lined. Although the floor was partly obscured by debris four square holes 26cm x 26cm were visible. Into these holes were formerly fixed wooden blocks to secure the mixing tables.


The building was heated by steam heating that was brought to the building through lagged pipes supported by concrete stanchions. Within the building were two flanged and curved cast iron steam pipes. Also within the building was a cast iron steam chest with the following lettering "The Lancaster" Patent Lancaster and Tonge Pendleton.

Historic artefacts - steam heating pipes?, steam chest, any other metal fitting

THE ROYAL GUNPOWDER FACTORY - WALTHAM ABBEY

NUMBER	OLD SERIES 63	RCHME NUMBER	N.G.R. TL 37625 02071
NAME/FUNCTION Mixing House No.5	START DATE 1904	END DATE 18-Jan-1940	
NO PHOTOGRAPHY AVAILABLE			
CARTOGRAPHIC DEPICTION		DOCUMENTARY REFERENCES	
1923 WASC 900/84 ; 63 Mixing House No.5		1908 RGPF Ledger WASC 1509 + WASC 1764 ; Mixing House No.5 c1925 RGPF Ledger WASC 1680 ; Mixing House No.5 c1945 RGPF Ledger WASC 1508 ; Mixing House No.5(demolished by explosion) 1972 ERDE List ? 1992 RARDE List ? WASC 498 Proc Court Inquiry at Waltham Abbey re explosion on 18 January 1940	
PHOTOGRAPHY HISTORIC		PHOTOGRAPHY RCHME	
1) WASC 499 Photographs of explosion 18-january-1940, photographs 1-3			
RELATIONSHIPS WITH OTHER MONUMENTS			
ASSOCIATED WITH: E5, 53			
CONDITION Destroyed			
DESCRIPTION			
5) Mixing house no 5 was destroyed in a an accidental explosion on the 18th january 1940. The site of the building may be discerned as an area of rubble strewn slightly elevated broken ground.			

THE ROYAL GUNPOWDER FACTORY - WALTHAM ABBEY

NUMBER	OLD SERIES 73	RCHME NUMBER	N.G.R.
NAME/FUNCTION Earth closet	START DATE	END DATE	
			
CARTOGRAPHIC DEPICTION		DOCUMENTARY REFERENCES	
PHOTOGRAPHY HISTORIC	PHOTOGRAPHY RCHME 1) 206/U/12 From north		
RELATIONSHIPS WITH OTHER MONUMENTS			
ASSOCIATED WITH:			
CONDITION	Good		
DESCRIPTION			
1)	CONSTRUCTIONAL MATERIAL Brick		
2)	ROOF MATERIALS AND STRUCTURE Roofing felt over timber boards		
3)	POWER SOURCE None		
4)	DIMENSIONS i) L 3.3m ii) W 2.7m iii) HT gable 2.9m		
5)	The earth closet consists of a covered elsan bucket to the south and an open urinal to the north. A painted sign on the wall reads 'clean'.		

THE ROYAL GUNPOWDER FACTORY - WALTHAM ABBEY

NUMBER U3	OLD SERIES	RCHME NUMBER	N.G.R.
--------------	------------	--------------	--------

NAME/FUNCTION Bunker	START DATE 1940?	END DATE
-------------------------	---------------------	----------

NO PHOTOGRAPHY
AVAILABLE

CARTOGRAPHIC DEPICTION	DOCUMENTARY REFERENCES
------------------------	------------------------

PHOTOGRAPHY HISTORIC	PHOTOGRAPHY RCHME
-------------------------	----------------------

RELATIONSHIPS WITH OTHER MONUMENTS
ASSOCIATED WITH:

CONDITION Fair

DESCRIPTION

- 1) CONSTRUCTIONAL MATERIAL
Brick in English bond
- 2) ROOF MATERIALS AND STRUCTURE
Flat concrete slab
- 3) POWER SOURCE
None
- 4) DIMENSIONS i) L 3.1m ii) W 2.05m iii) HT 2.2m
- 5) A small brick building with a single door on the north side and a window on the western side. The window may be sealed by removable stone blocks. Traces of wavy camouflage paint were discernible on the exterior.

THE ROYAL GUNPOWDER FACTORY - WALTHAM ABBEY

NUMBER	OLD SERIES 74	RCHME NUMBER	N.G.R. TL 37640 02024
NAME/FUNCTION Engine/Fan House	START DATE 1879 1904(altered)	END DATE 1945?	
NO PHOTOGRAPHY AVAILABLE			
CARTOGRAPHIC DEPICTION 1923 WASC 900/84 ; 74 Engine House		DOCUMENTARY REFERENCES 1908 RGPF Ledger WASC 1509 + WASC 1764 ; Engine & Fan House c1925 RGPF Ledger WASC 1680 ; Engine & Fan House c1945 RGPF Ledger WASC 1508 ; Engine & Fan House (demolished by explosion)	
PHOTOGRAPHY HISTORIC		PHOTOGRAPHY RCHME	
RELATIONSHIPS WITH OTHER MONUMENTS ASSOCIATED WITH: 75 underlies steam pipes RCHM 206 and 209			
CONDITION Demolished			
DESCRIPTION 1) CONSTRUCTIONAL MATERIAL Brick 2) ROOF MATERIALS AND STRUCTURE - 3) POWER SOURCE - 4) DIMENSIONS i) L 10m ii) W 5.7m 5) The brick foundations of this building remain.			

THE ROYAL GUNPOWDER FACTORY - WALTHAM ABBEY

NUMBER	OLD SERIES 74a	RCHME NUMBER	N.G.R. TL 37706 02020
NAME/FUNCTION Guncotton Stove No.18		START DATE 1914-18?	END DATE 18-Jan-1940
NO PHOTOGRAPHY AVAILABLE			
CARTOGRAPHIC DEPICTION 1923 WASC 900/84 ; 74a Guncotton Stove No.18		DOCUMENTARY REFERENCES c1925 RGF Ledger WASC 1680 ; Guncotton Stove No.18	
PHOTOGRAPHY HISTORIC 1) WASC 499 Photograph 11, Explosion 18-Jan-1940		PHOTOGRAPHY RCHME	
RELATIONSHIPS WITH OTHER MONUMENTS ASSOCIATED WITH: 75a, 76a			
CONDITION Destroyed in an explosion potential for buried remains poor			
DESCRIPTION 1) CONSTRUCTIONAL MATERIAL Brick and earthwork 2) ROOF MATERIALS AND STRUCTURE - 3) POWER SOURCE - 4) DIMENSIONS i) L ii) W iii) HT iv) DIA 5) This stove was destroyed as the result of the accidental explosion of mixing house no.62 on 18th january 1940. Its site now partly underlies the road to Cattlegate bridge leading to New Hill.			

THE ROYAL GUNPOWDER FACTORY - WALTHAM ABBEY

NUMBER	OLD SERIES 75	RCHME NUMBER	N.G.R. TL 37650 02000
NAME/FUNCTION Guncotton Stove No.14		START DATE 1895 1901-2	END DATE 1901 (demolished) 1940 (demolished by explosion)
NO PHOTOGRAPHY AVAILABLE			
CARTOGRAPHIC DEPICTION 1923 WASC 900/84 ; 75 Guncotton Stove No.14		DOCUMENTARY REFERENCES 1908 RGPF Ledger WASC 1509 + WASC 1764 ; Guncotton Stove c1925 RGPF Ledger WASC 1680 ; Guncotton Stove c1945 RGPF Ledger WASC 1508 ; Guncotton Stove (destroyed by explosion) Proc Court Inquirey explosion at RGPF 20-Apr- 1940, Appendix IV	
PHOTOGRAPHY HISTORIC 1) WASC 499 Photographs 4 and 5, explosion 18-jan-1940		PHOTOGRAPHY RCHME	
RELATIONSHIPS WITH OTHER MONUMENTS ASSOCIATED WITH: 74 UNDERLIES: S28			
CONDITION Fair			

DESCRIPTION

1) CONSTRUCTIONAL MATERIAL
Brick

2) ROOF MATERIALS AND STRUCTURE
Formerly slate

3) POWER SOURCE
Steam heating?

4) DIMENSIONS i) L 9.8m ii) W 6.1m

5) The site of the building is marked by brick foundations and demolition rubble. At the northern end of the building is concrete machine mounting block with four vertical mounting bolts. This building was severely damaged in two explosions in 1940, 18 January and 20 April.

To the south of the building is a battered cast concrete traverse. The traverse is 9m in length, 2.3m wide and 3.4m in height. It has been partly incorporated into S28.

THE ROYAL GUNPOWDER FACTORY - WALTHAM ABBEY

NUMBER	OLD SERIES 75a	RCHME NUMBER	N.G.R. TL 37721 02000
NAME/FUNCTION Motor House		START DATE 1908-20?	END DATE ?18-Jan-1940
NO PHOTOGRAPHY AVAILABLE			
CARTOGRAPHIC DEPICTION 1923 WASC 900/84 ; 75a Motor House		DOCUMENTARY REFERENCES	
PHOTOGRAPHY HISTORIC 1) WASC 499, Photograph ?12, explosion 18-Jan-1940		PHOTOGRAPHY RCHME	
RELATIONSHIPS WITH OTHER MONUMENTS ASSOCIATED WITH: 74a, 76a			
CONDITION Buried ?			
DESCRIPTION 1) CONSTRUCTIONAL MATERIAL 2) ROOF MATERIALS AND STRUCTURE - 3) POWER SOURCE - 4) DIMENSIONS i) L ii) W iii) HT iv) DIA 5) The building was badly damaged in an accidental explosion 18-jan-1940, it is unlikely that it was rebuilt.			

THE ROYAL GUNPOWDER FACTORY - WALTHAM ABBEY

NUMBER	OLD SERIES 76	RCHME NUMBER	N.G.R. TL 37532 01952
--------	------------------	--------------	--------------------------

NAME/FUNCTION Traverse (part of former Corning House) Press House and Associated buildings Mixing House No.4	START DATE pre 1827 1865? 1898?	END DATE 1865? 1908? 1945?
---	--	-------------------------------------



CARTOGRAPHIC DEPICTION

1827 WASC 900/04 + MPH 271 ; Traverse site of Former Corning House worked by Horses.

1830 WASC 900/05 ; site of No.3 Corning House

c1835 WASC 900/07 ; site of Corning House

1865 WASC 900/38 + SUPP5 975 ; Press House, Wheel, Pump, Washing up Houses and Traverse.

1865 WASC 900/42 ; Press House, Wheel, Pump, Washing up Houses and Traverse.

1897 WASC 900/53C

c1910 WASC 900/65 ; 76

c1910 WASC 900/79 ; 76

1917 WASC 900/70 ; 76

1917 WASC 900/72 ; 76

1919 WASC 900/74 ; 76

c1920 WASC 900/80 ; 76

1923 WASC 900/84 ; 76

1932 WASC 900/87 ; 76

>1940 WASC 900/91A ; 76

1954 A - B.34 ; 76

c1960 WASC 900/94 ; 76

c1963 WASC 900/97 ; 76

1972 WASC 900/102 ; 76

1972 WASC 900/104 ; 76

1976 WASC 900/113 ; 76

DOCUMENTARY REFERENCES

1830 Statement of Property WO55 2351

1841 Statement of Property WO55 2856

1851 Statement of Property WO55 3027

1908 RGPF Ledger WASC 1509 + WASC 1764 ; Mixing House, Shoe Porch

c1925 RGPF Ledger WASC 1680 ; Mixing House, Shoe Porch

c1945 RGPF Ledger WASC 1508 ; Mixing House, Shoe Porch (demolished)

1972 ERDE list ; Former Mixing House No.4

1992 RARDE list ; Former Mixing House No.4

PHOTOGRAPHY HISTORIC

PHOTOGRAPHY RCHME

1) 206/1/16 01 Feb 1993 Traverse from South West
206/1/18 01 Feb 1993 Dock near 76 from South
206/1/19 01 Feb 1993 Traverse from South
206/T/7 17 Mar 1993 Brick traverse

RELATIONSHIPS WITH OTHER MONUMENTS

ASSOCIATED WITH: CUT BY: RCHM 107

CONDITION GOOD: Fair

DESCRIPTION

1) CONSTRUCTIONAL MATERIAL
Brick

2) ROOF MATERIALS AND STRUCTURE
-

3) POWER SOURCE
1) Water 2) water powering a hydraulic pump


4) DIMENSIONS i) L 14.94m ii) W 5.45m iii) HT estimate 6m

5) The monument lies at the head of a higher level leat fed from Millhead stream. The core of this monument is an oval, battered brick traverse dating from the early nineteenth century and associated with a corning mill worked by horses. In the middle of the century the building was converted to a water powered gunpowder press house, analogous to 103/4. The mill was powered by the head of water from the leat falling into the old river Lee at a lower level. This wheel powered an hydraulic pump which in turn powered the press on the north east side of the building. At the end of the century the press house was converted to a cordite mixing house. The site of the wheel house to the south west of the traverse was lost in 1940 when a new canal arm was pushed though RCHM 107.

The remains consist of the brick traverse, to the southwest a short length of a brick foundation in the canal bank marks one wall of the wheel house, the remainder has been lost to the canal. To the north east of the traverse the brick foundations of the press house, length 8.65m width 7.23m and part of a broken concrete floor. The western wall also forming a wharf edge to the canal basin. Along the front of the wharf is some metal piping that may either relate to the hydraulic gunpowder press or the cordite mixing house.

Historic artefacts - Metal pipes along the front of the press house.

THE ROYAL GUNPOWDER FACTORY - WALTHAM ABBEY

NUMBER	OLD SERIES 76a	RCHME NUMBER	N.G.R. TL 37737 01970
NAME/FUNCTION Guncotton Stove No.19		START DATE 1908-1920?	END DATE 1945?
			
CARTOGRAPHIC DEPICTION 1923 WASC 900/84 ; 76a Guncotton Stove No.19		DOCUMENTARY REFERENCES c1925 RGPF Ledger WASC 1680 ; Guncotton Stove No.19 c1945 RGPF Ledger WASC-1508 ; Guncotton Stove No.19 1972 ERDE List ; Guncotton Stove/Burnt out 1992 FARDE List ; Guncotton Stove/Burnt out	
PHOTOGRAPHY HISTORIC 1) WASC 499 Photograph 13, Explosion 18-Jan-1940		PHOTOGRAPHY RCHME 1) 206/M/20 4 Mar 1993 From West 206/M/21 4 Mar 1993 Detail of warm air pipe 206/M/22 4 Mar 1993 Detail of warm air pipe roof plate	
RELATIONSHIPS WITH OTHER MONUMENTS ASSOCIATED WITH: 74a, 75a			
CONDITION		Good	

DESCRIPTION

- 1) CONSTRUCTIONAL MATERIAL
Brick and earthwork
- 2) ROOF MATERIALS AND STRUCTURE
-
- 3) POWER SOURCE
Electricity and steam heat
- 4) DIMENSIONS iii) HT wall 2.05m iv) DIA 10.8m

- 5) The guncotton stove survives as a circular brick wall 2.05m in height and 10.8m in diameter with an earthen mound packed around it almost to wall height. The interior of the walls in this stove are cement redendered. The Stove was entered from the south west along a covered porch. The porch consists of a low brick wall into which bolts were set to secure the timber superstructure. Two concrete blocks on the opposite side of the modern track mark the positions of upright timbers. These formerly supported a cover over narrow gauge railway that served the stove.

The stove was situated within a circular round house set on a platform separated from the enclosing wall by a narrow gully. The inner edge of this gully is lined with grey engineering bricks into which are set vertical bolts that formerly carried the timber frame of the building.

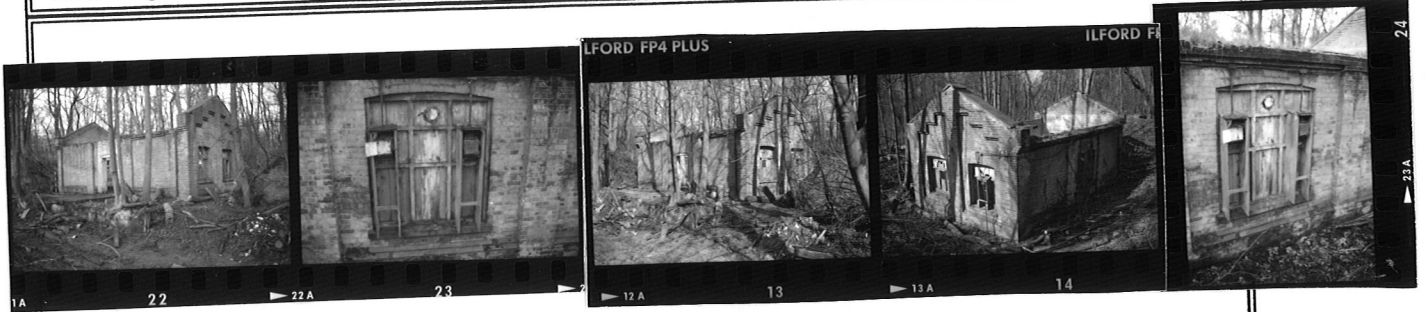
The stove was lit by electric 'Maxlume' lights, a number of which are lying around in the building. The heating was supplied to the stove by a single pipe which entered from the north west. The pipe is constructed from joined sheet metal segments forming two flanged straights 1.45m and 3.05m in length with a bore of 30.2cm connected to a flanged curve. This in turn was connected to a circular roofplate 106.5m in diameter with a bore of 30.5cm. The pipe is lagged with fibrous abestos held in place by chicken wire with an outer sheet metal coat.

The stove was severely damaged in an explosion on 18-Jan-1940 see WASC 498, .499

Historic artefacts - Light fittings, nails and heating pipe, window glass?

THE ROYAL GUNPOWDER FACTORY - WALTHAM ABBEY

NUMBER	OLD SERIES 88a	RCHME NUMBER	N.G.R. TL 37594 01900
NAME/FUNCTION No.6 Mixing House C.E. Magazine		START DATE 1914-20? 1940?	END DATE



CARTOGRAPHIC DEPICTION

1923 WASC 900/84 ; 88a
 > 1940 WASC 900/91A ; 88a
 1954 A - B.34 ; 88a
 c1960 WASC 900/94 ; 88a
 c1963 WASC 900/97
 1972 WASC 900/102
 1972 WASC 900/104
 1976 WASC 900/113

DOCUMENTARY REFERENCES

Plans;
 88a B01 - B04 ; Plans and Elevations
 c1925 RGPF Ledger WASC 1680 ; CE Magazine
 1991 Mott McDonald survey
 1992 RARDE List ; Derelict Tetryl Magazine and
 Mixing House

PHOTOGRAPHY HISTORIC

PHOTOGRAPHY RCHME

RELATIONSHIPS WITH OTHER MONUMENTS

ASSOCIATED WITH: 88b

CONDITION Fair

DESCRIPTION

- 1) CONSTRUCTIONAL MATERIAL
Brick in English Bond
- 2) ROOF MATERIALS AND STRUCTURE
-
- 3) POWER SOURCE
Electric lighting
- 4) DIMENSIONS i) L 10.67m ii) W 6m iii) HT gable 5m
- 5) The magazine is a single storey gabled building in brick. The western wall consists of three blind panels the centre panel has the double doors. This entrance was originally protected by a covered porch in order that material could be loaded and unloaded under cover from the adjacent canal. The north and south gabled ends consist of two blind panels with a window in each panel. The eastern wall has three blind panels with a window in the centre panel opposite to the door. In the concrete floor of the building are a number of holes marking the positions of the mixing tables. The building is roofless.

All five windows in the building retain part of the danger building lighting system. This consisted of a timber blocking to the window with a single small pane of glass at the top, two in the larger eastern window. External to each window is a Maxlume danger building light casing set with a wooden case. The wiring for the lights was enclosed within narrow bore metal piping.

*Took
Heli 8* Historic artefacts - Danger building lights including
at least one window frame.

THE ROYAL GUNPOWDER FACTORY - WALTHAM ABBEY

NUMBER 88b	OLD SERIES	RCHME NUMBER	N.G.R.
NAME/FUNCTION Fanhouse?		START DATE 1940	END DATE
CARTOGRAPHIC DEPICTION		DOCUMENTARY REFERENCES	
PHOTOGRAPHY HISTORIC		PHOTOGRAPHY RCHME 1) 206/I/21 From south 206/T/12 From south	
RELATIONSHIPS WITH OTHER MONUMENTS			
ASSOCIATED WITH: 88a			
CONDITION Good			
<p>DESCRIPTION</p> <p>1) CONSTRUCTIONAL MATERIAL Brick</p> <p>2) ROOF MATERIALS AND STRUCTURE Flat concrete slab</p> <p>3) POWER SOURCE Electricity</p> <p>4) DIMENSIONS i) L 3.25m ii) W 3.25m iii) HT 3.26m</p> <p>5) The building is a small brick shed with a single door on the west side and a small window on the northern side. The door furniture is brass. A small circular hole on the south side presumably housed a pipe leading to 88a. With the building is an electric ?pump, for pushing warm air into 88a?. A small plate on the machine records the date of manufacture as 16 12 40.</p> <p>Historic artefacts - pump and makers plate (it is the only surviving ?warm air pump/fan on site), brass door furniture.</p>			

THE ROYAL GUNPOWDER FACTORY - WALTHAM ABBEY

NUMBER 89	OLD SERIES	RCHME NUMBER	N.G.R.
NAME/FUNCTION No.1 Fuse powder magazine C.E. Magazine no.4		START DATE	END DATE 194?

NO PHOTOGRAPHY
AVAILABLE

CARTOGRAPHIC DEPICTION	DOCUMENTARY REFERENCES
------------------------	------------------------

PHOTOGRAPHY HISTORIC 1) WASC 499 Photograph 9, damage caused by explosion of Mixing house 63 18-Jan-1940	PHOTOGRAPHY RCHME
--	----------------------

RELATIONSHIPS WITH OTHER MONUMENTS
 ASSOCIATED WITH: 88, 87, 90, 91

CONDITION Demolished brick foundations remain


DESCRIPTION

- 1) CONSTRUCTIONAL MATERIAL
 Brick
- 2) ROOF MATERIALS AND STRUCTURE
 -
- 3) POWER SOURCE
 Formerly steam heat from boiler house 90
- 4) DIMENSIONS i) L 11.6m ii) W 9.8m
- 5) The building was brick built with a gabled roof, it was heated by steam from the boiler within traverse. The building was probably demolished during the second world war perhaps prompted by damage it suffered in an accidental explosion 18-Jan-1940. The outline of the building may be traced as brick foundations with three small rooms to the north east. The line of the canal that formerly surrounded this building and 90 and 91 may be traced as slight hollow to the north east of this building. The opposite side of the canal may in part be traced as a brick foundation that supported a covered porch.

THE ROYAL GUNPOWDER FACTORY - WALTHAM ABBEY

NUMBER 91	OLD SERIES	RCHME NUMBER	N.G.R.
NAME/FUNCTION Gunpowder Stove		START DATE	END DATE
NO PHOTOGRAPHY AVAILABLE			
CARTOGRAPHIC DEPICTION		DOCUMENTARY REFERENCES	
PHOTOGRAPHY HISTORIC		PHOTOGRAPHY RCHME	
RELATIONSHIPS WITH OTHER MONUMENTS ASSOCIATED WITH: 87, 88 ABUTTS: 90 UNDERLIES: S30			
CONDITION Demolished			
DESCRIPTION 1) CONSTRUCTIONAL MATERIAL Brick 2) ROOF MATERIALS AND STRUCTURE - 3) POWER SOURCE Formerly steam heat from 90 4) DIMENSIONS i) L 13m ii) W 3.5m + 5) This remains of this building survives incorporated into the traverse of S30. The rear wall of this traverse has four steam pipes at its base formerly part of 91. Brick foundations to the south and north east of S30 represent other fragments of this building. The building was probably demolished after damage it sustained in an accidental explosion on 18-Jan-1940. It was replaced by S30.			

THE ROYAL GUNPOWDER FACTORY - WALTHAM ABBEY

NUMBER	OLD SERIES 91a	RCHME NUMBER	N.G.R. TL 37724 01906
NAME/FUNCTION Hose House		START DATE 1914-20?	END DATE
			
CARTOGRAPHIC DEPICTION		DOCUMENTARY REFERENCES	
		c1925 RGPF Ledger WASC 1680 ; Hose House c1945 RGPF Ledger WASC 1508 ; Hose House	
PHOTOGRAPHY HISTORIC		PHOTOGRAPHY RCHME	
RELATIONSHIPS WITH OTHER MONUMENTS			
ASSOCIATED WITH: U9, 93a			
CONDITION Demolished			
DESCRIPTION			
1) CONSTRUCTIONAL MATERIAL			
2) ROOF MATERIALS AND STRUCTURE			
3) POWER SOURCE			
4) DIMENSIONS i) L ii) W iii) HT			
5)			

THE ROYAL GUNPOWDER FACTORY - WALTHAM ABBEY			
NUMBER	OLD SERIES	RCHME NUMBER	N.G.R.
	92a		TL 37775 01921
NAME/FUNCTION		START DATE	END DATE
Guncotton Stove No.20		1908-1920	1945?
NO PHOTOGRAPHY AVAILABLE			
CARTOGRAPHIC DEPICTION		DOCUMENTARY REFERENCES	
1923	WASC 900/84 ; 92a Guncotton Stove No.20	c1925	RGPF Ledger WASC 1680 ; Guncotton Stove No.20
		1972	ERDE List ; Guncotton Stove/Burnt out
		1992	PARDE List ; Guncotton Stove/Burnt out
PHOTOGRAPHY HISTORIC		PHOTOGRAPHY RCHME	
RELATIONSHIPS WITH OTHER MONUMENTS			
ASSOCIATED WITH: 92b, 93c			
CONDITION	Good		

DESCRIPTION

- 1) CONSTRUCTIONAL MATERIAL
Brick and earthwork
- 2) ROOF MATERIALS AND STRUCTURE
-
- 3) POWER SOURCE
Electricity and steam heat
- 4) DIMENSIONS iii) HT wall 2m iv) DIA 10.7m

- 5) The guncotton stove survives as a circular brick wall 2m in height and 10.7m in diameter with an earthen mound packed around it almost to wall height. The Stove was entered from the south west along a covered porch. The porch consists of a low brick wall into which bolts were set to secure the timber superstructure. Two concrete blocks on the opposite side of the modern track mark the positions of upright timbers. These formerly supported a cover over narrow gauge railway that served the stove.

The stove was situated within a circular round house set on a platform separated from the enclosing wall by a narrow gully, 65cm in width and 30cm deep. The inner edge of this gully is lined with grey engineering bricks into which are set vertical bolts that formerly carried the timber frame of the building.

The heating was supplied to the stove by a single pipe which entered from the south east from motor house 92b. The pipe is constructed from joined sheet metal segments forming two flanged straights 1.4m and 2.43m in length with a bore of 30.2cm connected to a flanged curve. This in turn was connected to an octagonal roofplate 91.2cm x 91.7cm with a bore of 30.5cm. The pipe is lagged with fibrous abestos secured by chicken wire with an outer sheet metal coat.

Historic artefacts - Light fittings, nails and heating pipe, window glass?

THE ROYAL GUNPOWDER FACTORY - WALTHAM ABBEY

NUMBER	OLD SERIES 92b	RCHME NUMBER	N.G.R. TL 37797 01900
NAME/FUNCTION Motor House		START DATE 1914-20?	END DATE
NO PHOTOGRAPHY AVAILABLE			
CARTOGRAPHIC DEPICTION		DOCUMENTARY REFERENCES c1925 RGPF Ledger WASC 1680 ; Motor House c1945 RGPF Ledger WASC 1508 ; Motor House	
PHOTOGRAPHY HISTORIC		PHOTOGRAPHY RCHME	
RELATIONSHIPS WITH OTHER MONUMENTS ASSOCIATED WITH: 92a, 93c			
CONDITION Poor			
DESCRIPTION 1) CONSTRUCTIONAL MATERIAL a) BRICK b) CONCRETE c) BRICK AND CONCRETE d)TIMBER e) CAST IRON f) CORRUGATED IRON 2) ROOF MATERIALS AND STRUCTURE a) SLATE b) TILE c) BRICK d) CONCRETE e) TIMBER AND SHEETING f) CORRUGATED IRON 3) POWER SOURCE a) MUSCLE b) WATER c) STEAM d) GAS e) ELECTRICITY f) COMBUSTION ENGINE 4) DIMENSIONS i) L ii) W iii) HT iv)DIA 5)			

THE ROYAL GUNPOWDER FACTORY - WALTHAM ABBEY

NUMBER	OLD SERIES 93a	RCHME NUMBER	N.G.R. TL 37742 01866
NAME/FUNCTION C.E. Stove no 1		START DATE 1908-1920	END DATE 1945? 1992 (ruin)



CARTOGRAPHIC DEPICTION 1923 WASC 900/84 ; 93a C.E. Stove No.1	DOCUMENTARY REFERENCES c1925 RGPF Ledger WASC 1680 ; C.E. Stove No.1 1972 ERDE List ; Guncotton Stove/Burnt out 1992 RARDE List ; Guncotton Stove/Burnt out Proc Court Enquirey Explosion RGPF 20-Apr-1940 Map C.E. Store no 5
---	---

PHOTOGRAPHY HISTORIC	PHOTOGRAPHY RCHME 1) 206/M/6 4 Mar 1993 From East
-------------------------	---

RELATIONSHIPS WITH OTHER MONUMENTS

ASSOCIATED WITH: 93b, 96a

CONDITION Good

DESCRIPTION

- 1) CONSTRUCTIONAL MATERIAL
Brick and earthwork
- 2) ROOF MATERIALS AND STRUCTURE
-
- 3) POWER SOURCE
Electricity and steam heat
- 4) DIMENSIONS iii) HT wall 2.05m iv) DIA 10.7m

- 5) The guncotton stove survives as a circular brick wall 2.05m in height and 10.7m in diameter with an earthen mound packed around it almost to wall height. The Stove was entered from the northeast through a covered porch. The porch consists of a low brick wall into which bolts were set to secure the timber superstructure. Two concrete blocks on the opposite side of the modern track mark the positions of upright timbers. These formerly supported a cover over narrow gauge railway that served the stove.

The stove was situated within a circular round house set on a platform separated from the enclosing wall by a narrow gully. The inner edge of this gully is lined with grey engineering bricks into which are set vertical bolts that formerly carried the timber frame of the building.

The heating was supplied to the stove by a single pipe which entered from the south west from motor and switch house 93b. The pipe is constructed from joined sheet metal segments forming two flanged straights 1.92m and 2.43m in length with a bore of 30.3cm connected to a flanged curve. The pipe is lagged with fibrous abestos secured by chicken wire with an outer sheet metal coat.

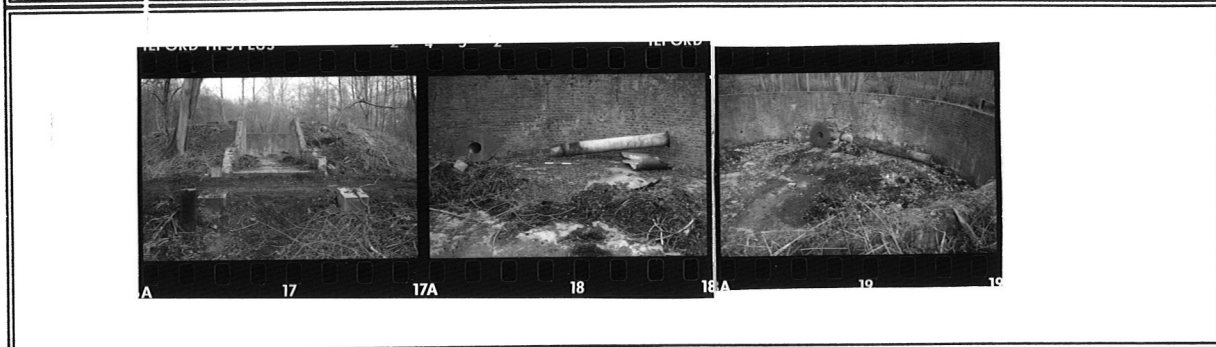
Historic artefacts - Light fittings, nails and heating pipe, window glass?

THE ROYAL GUNPOWDER FACTORY - WALTHAM ABBEY			
NUMBER	OLD SERIES 93b	RCHME NUMBER	N.G.R.
NAME/FUNCTION Motor and switch house		START DATE	END DATE
NO PHOTOGRAPHY AVAILABLE			
CARTOGRAPHIC DEPICTION		DOCUMENTARY REFERENCES	
PHOTOGRAPHY HISTORIC		PHOTOGRAPHY RCHME	
RELATIONSHIPS WITH OTHER MONUMENTS ASSOCIATED WITH: 93a, 96a			
CONDITION Fair			
DESCRIPTION 1) CONSTRUCTIONAL MATERIAL 2) ROOF MATERIALS AND STRUCTURE 3) POWER SOURCE Electricity and steam heat 4) DIMENSIONS i) L 6m ii) W 4.1m 5) The building has been demolished a concrete floor slab remains with vertical bolts that formerly secured the timber frame.			

THE ROYAL GUNPOWDER FACTORY - WALTHAM ABBEY

NUMBER	OLD SERIES 93c	RCHME NUMBER	N.G.R. TL 37814 01871
--------	-------------------	--------------	--------------------------

NAME/FUNCTION C.E. Stove No.20	START DATE 1908-1920	END DATE 1945?
-----------------------------------	-------------------------	-------------------



<p>CARTOGRAPHIC DEPICTION</p> <p>1923 WASC 900/84 ; 93c C.E. Stove No.20</p>	<p>DOCUMENTARY REFERENCES</p> <p>c1925 RGF Ledger WASC 1680 ; C.E. Stove No.20</p> <p>1972 ERDE List ; Guncotton and Tetryl Stove/Burnt out</p> <p>1992 RARDE List ; Guncotton and Tetryl Stove/Burnt out</p>
--	---

<p>PHOTOGRAPHY HISTORIC</p>	<p>PHOTOGRAPHY RCHME</p> <p>1) 206/M/17 4 Mar 1993 From West Strong porch posts</p> <p>206/M/18 4 Mar 1993 Detail of warm air pipe</p> <p>206/M/19 4 Mar 1993 Detail of interior from South</p>
------------------------------------	--

RELATIONSHIPS WITH OTHER MONUMENTS

ASSOCIATED WITH:

CONDITION

DESCRIPTION	
1)	CONSTRUCTIONAL MATERIAL
2)	ROOF MATERIALS AND STRUCTURE
3)	POWER SOURCE
4)	DIMENSIONS i) L ii) W .iii) HT
5)	

THE ROYAL GUNPOWDER FACTORY - WALTHAM ABBEY

NUMBER	OLD SERIES 93d	RCHME NUMBER	N.G.R.
--------	-------------------	--------------	--------

NAME/FUNCTION Motor House	START DATE 1914-20?	END DATE
------------------------------	------------------------	----------

NO PHOTOGRAPHY
AVAILABLE

CARTOGRAPHIC DEPICTION	DOCUMENTARY REFERENCES
------------------------	------------------------

PHOTOGRAPHY HISTORIC	PHOTOGRAPHY RCHME
-------------------------	----------------------

RELATIONSHIPS WITH OTHER MONUMENTS
ASSOCIATED WITH: 96b

CONDITION Fair

DESCRIPTION

- 1) CONSTRUCTIONAL MATERIAL
- 2) ROOF MATERIALS AND STRUCTURE
- 3) POWER SOURCE
Electricity and steam heat
- 4) DIMENSIONS i) L 4.1m ii) W 4m
- 5) The building has been fired. A concrete floor slab remains with vertical bolts that formerly secured the timber framed building to the base.

THE ROYAL GUNPOWDER FACTORY - WALTHAM ABBEY			
NUMBER	OLD SERIES 94	RCHME NUMBER	N.G.R.
NAME/FUNCTION Boat house	START DATE	END DATE	
NO PHOTOGRAPHY AVAILABLE			
CARTOGRAPHIC DEPICTION		DOCUMENTARY REFERENCES	
PHOTOGRAPHY HISTORIC		PHOTOGRAPHY RCHME	
RELATIONSHIPS WITH OTHER MONUMENTS ASSOCIATED WITH: S31			
CONDITION Demolished , bay and foundations may survive as buried remains			
DESCRIPTION 5) At the site of the boathouse are odd brick foundations they may mark its site. The area is now partly covered by a tarmac and concrete surface.			

THE ROYAL GUNPOWDER FACTORY - WALTHAM ABBEY

NUMBER	OLD SERIES 95a	RCHME NUMBER	N.G.R. TL37590 01807
--------	-------------------	--------------	-------------------------

NAME/FUNCTION Tetryl Purification plant	START DATE 1917?	END DATE 1945?
--	---------------------	-------------------



CARTOGRAPHIC DEPICTION	DOCUMENTARY REFERENCES
------------------------	------------------------

PHOTOGRAPHY HISTORIC	PHOTOGRAPHY RCHME
-------------------------	----------------------

RELATIONSHIPS WITH OTHER MONUMENTS
 ASSOCIATED WITH: U6

CONDITION Good

DESCRIPTION

- 1) CONSTRUCTIONAL MATERIAL
 Concrete
- 3) POWER SOURCE
 -
- 4) DIMENSIONS i) L 5.8m ii) W 5.15 iii) HT 1.65
- 5) Solid concrete hexagonal base raised on concrete legs, on top of the platform are two concrete blocks with vertical mounting bolts set into them.

THE ROYAL GUNPOWDER FACTORY - WALTHAM ABBEY

NUMBER 95b	OLD SERIES	RCHME NUMBER	N.G.R.
NAME/FUNCTION Building		START DATE	END DATE
NO PHOTOGRAPHY AVAILABLE			
CARTOGRAPHIC DEPICTION		DOCUMENTARY REFERENCES	
PHOTOGRAPHY HISTORIC		PHOTOGRAPHY RCHME	
RELATIONSHIPS WITH OTHER MONUMENTS			
ASSOCIATED WITH:			
CONDITION Demolished			
DESCRIPTION			
<p>4) DIMENSIONS i) L 3.1m ii) W 3.3m</p> <p>5) The building has been demolished, a concrete floor slab with vertical frame mounting bolts remains. A timber revetment against the side of old river Lee may mark the position of a bridge.</p>			

THE ROYAL GUNPOWDER FACTORY - WALTHAM ABBEY

NUMBER	OLD SERIES 96	RCHME NUMBER	N.G.R. TL 37536 01780
NAME/FUNCTION Box house Dining room Washing up house		START DATE 1861	END DATE



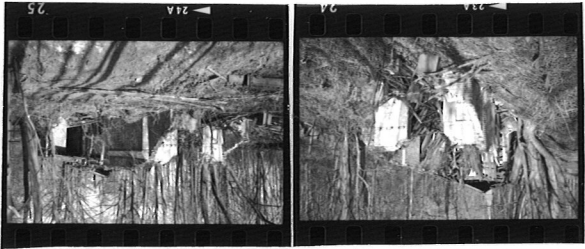
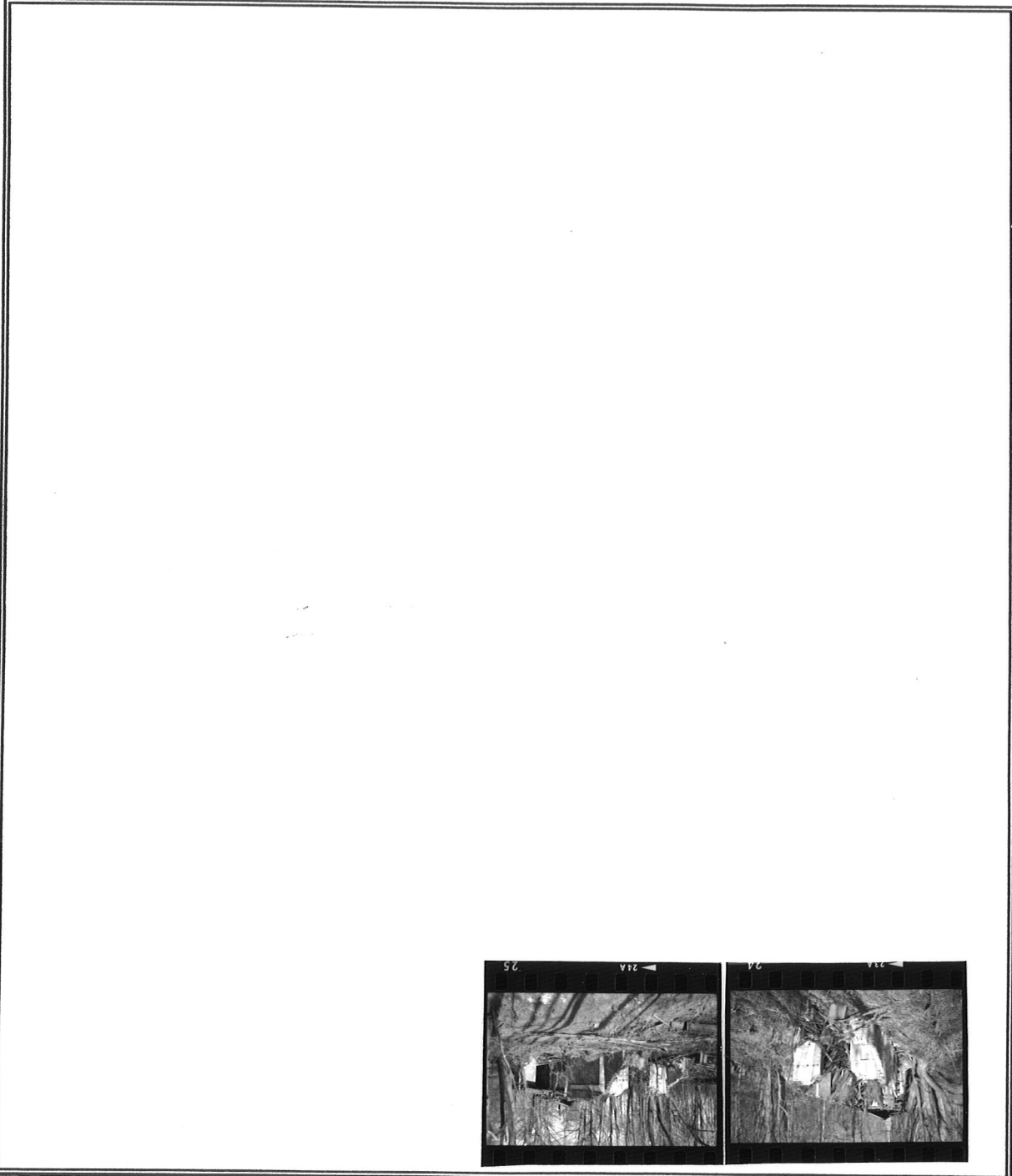
<p>CARTOGRAPHIC DEPICTION</p> <p>1865 WASC 900/38 + SUPP5 975 ; Box House 1865 WASC 900/41A ; Box House 1865 WASC 900/42 ; Box House 1897 WASC 900/53C c1910 WASC 900/65 ; Dining Room c1910 WASC 900/79 ; Dining Room 1917 WASC 900/70 1917 WASC 900/72 ; 96 1919 WASC 900/74 ; 96 c1920 WASC 900/80 ; 96 1923 WASC 900/84 ; 96 > 1940 WASC 900/91A ; 96 1954 A - B.34 ; 96 c1960 WASC 900/94 ; 96 c1963 WASC 900/97 ; 96 1972 WASC 900/102 ; 96 1972 WASC 900/104 ; 96 1976 WASC 900/113 ; 96</p>	<p>DOCUMENTARY REFERENCES</p> <p>Plans; 96 B01,B02 ; Plans and Elevations 1861,1871</p> <p>1908 RGPF Ledger WASC 1509 + WASC 1764 ; Dining Room c1925 RGPF Ledger WASC 1680 ; Dining Room c1945 RGPF Ledger WASC 1508 ; Dining Room</p> <p>1992 RARDE List ; Dining House</p>
--	--

<p>PHOTOGRAPHY HISTORIC</p>	<p>PHOTOGRAPHY RCHME</p> <p>1) 206/J/5 From east 206/J/6 Detail of window showing blackout shutters 206/J/7 From North 206/J/8 Detail of window 206/R/24 From east 206/R/25 North elevation from east</p>
------------------------------------	---

RELATIONSHIPS WITH OTHER MONUMENTS

ASSOCIATED WITH:

CONDITION Poor



NUMBER CONTINUATION SHEET

THE ROYAL GUNPOWDER FACTORY - WALTHAM ABBEY

DESCRIPTION

1) CONSTRUCTIONAL MATERIAL
Brick

2) ROOF MATERIALS AND STRUCTURE
Hipped, roofing felt over timber boards

3) POWER SOURCE
Steam heating and electricity

4) DIMENSIONS i) L 17.1m ii) W 7.7m iii) HT eave 3m

5) The dining room is a single storey building with a hipped roof. A number of additions have been made to the original core of the building. A brick lobby has been added to the eastern end. A timber framed outshot covered by asbestos sheeting attached to the northern wall probably dates from the second world war. Within this room a series of pigeon holes still retained address cards to other explosives factories and a pocket calendar from 1944. All the window openings were protected by canvas blackout shutters.

Originally the building was heated by a number of fireplaces subsequently blocked. In its last phase the building was steam heated, the pipe was attached to the northern wall along with a pressure guage 0-100lbs/sqin.

Historic artefacts - Contraband box near east end, pressure guage on north wall, other items may survive within the building.

THE ROYAL GUNPOWDER FACTORY - WALTHAM ABBEY

NUMBER	OLD SERIES 96a	RCHME NUMBER	N.G.R. TL 37784 01821
NAME/FUNCTION C.E. Stove No.2		START DATE 1908-1920	END DATE 1945?
CARTOGRAPHIC DEPICTION 1923 WASC 900/84 ; 96a C.E. Stove No.2		DOCUMENTARY REFERENCES c1925 RGPF Ledger WASC 1680 ; C.E. Stove No.2 1972 ERDE List ; Guncotton and Tetryl Stove/Burnt out 1992 RARDE List ; Guncotton and Tetryl Stove/Burnt out Proc court enquirey Explosion at RGPF 20-Apr-1940 C.E. Store no 6	
PHOTOGRAPHY HISTORIC		PHOTOGRAPHY RCHME 1) 206/M/7 4 Mar 1993 Detail of inlet pipe 206/M/8 4 Mar 1993 Detail of inlet into building 206/M/9 4 Mar 1993 Interior of Stove rom South 206/M/10 4 Mar 1993 Steps in west side of mound from South 2) BB92/26286 96A Guncotton Stove with internal pipes BB92/26247 96A Guncotton Stove with Drying Racks view from West.	
RELATIONSHIPS WITH OTHER MONUMENTS ASSOCIATED WITH: 93a, 93b			
CONDITION Good			

DESCRIPTION

- 1) CONSTRUCTIONAL MATERIAL
Brick and earthwork
- 2) ROOF MATERIALS AND STRUCTURE
Timber board covered by felt
- 3) POWER SOURCE
Electricity and steam heat
- 4) DIMENSIONS iii) HT wall 2m iv)DIA 10.75m

- 5) The guncotton stove survives as a circular brick wall 2 in height and 10.75m in diameter, encircled by an earthen mound almost to wall height. The Stove was entered from the northeast through a covered porch. The porch consists of a low brick wall into which bolts were set to secure the timber superstructure. Two concrete blocks on the opposite side of the modern track mark the positions of upright timbers. These formerly supported a cover over narrow gauge railway that served the stove.

The stove was situated within a circular round house set on a platform separated from the enclosing wall by a narrow gully. The inner edge of this gully is lined with grey engineering bricks into which are set vertical bolts that formerly carried the timber frame of the building. On the western side of the encircling mound a set of steps ran up the side of the mound. These formerly served a set of steps between the side of the round house and the wall.

The heat for the stove was supplied from motor and switch house 93b. The main feeder pipe being carried up the side of the stove mound on concrete stanchions. This pipe now missing joined to a curved flanged bend.

Historic artefacts - Light fittings, nails and heating pipe, window glass?

THE ROYAL GUNPOWDER FACTORY - WALTHAM ABBEY

NUMBER L102, L103	OLD SERIES 103	RCHME NUMBER	N.G.R. TL 37675 01700
NAME/FUNCTION Corning House Press House No.2		START DATE 1806-27 c1850	END DATE pre 1827 c1941



CARTOGRAPHIC DEPICTION

1827 WASC 900/04 - MPH 271 ; site of Former Corning House powered by Horses

1830 WO55 2694

1830 WASC 900/05

c1830 WASC 900/06

c1835 WASC 900/07

1861-1868 WASC 900/10A

1865 WASC 900/13

1865 WASC 900/14

1865 WASC 900/38 + SUPP5 975 ; Washing up House and Press House

1865 WASC 900/41A ; Washing up House and Press House

1865 WASC 900/42

1897 WASC 900/53C

c1910 WASC 900/65 ; Press House

c1910 WASC 900/79 ; Press House

1917 WASC 900/70 ; Pump and Press House

1917 WASC 900/72 ; 103,104

1919 WASC 900/74 ; 103,104

c1920 WASC 900/80 ; 103

1923 WASC 900/84 ; 103

> 1940 WASC 900/91A ; 103

1954 A - B.34 ; L102, L103

c1960 WASC 900/94 ; L102, L103

c1963 WASC 900/97 ; L102, L103

1972 WASC 900/102 ; L102, L103

1972 WASC 900/104

1976 WASC 900/113

DOCUMENTARY REFERENCES

Plans;
L102,L103 B01,B02 ; Plans and Elevations c1894

1807 Statement of Property WO55 2694

1830 Statement of Property WO55 2351

1841 Statement of Property WO55 2856

1851 Statement of Property WO55 3027

1908 RGPF Ledger WASC 1509 + WASC 1764 ; Gunpowder Press House

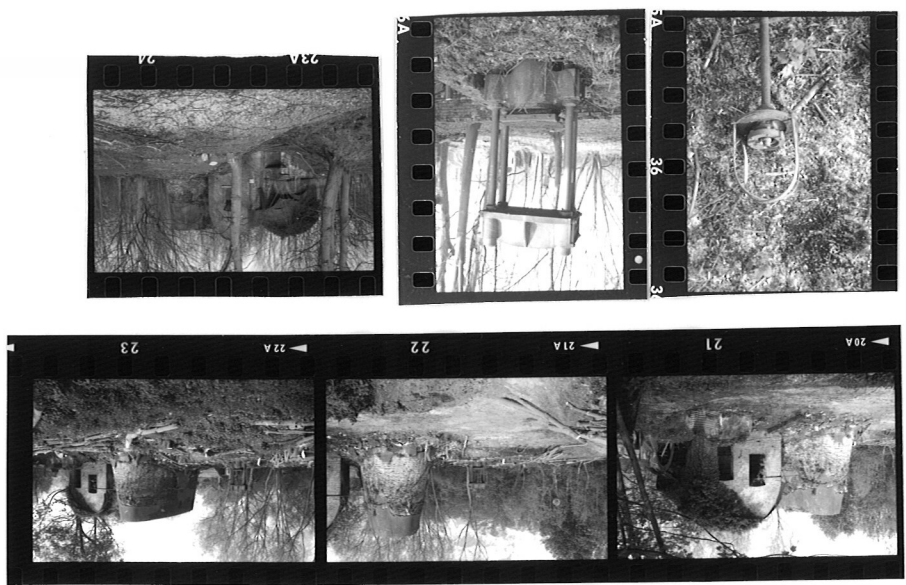
c1925 RGPF Ledger WASC 1680 ; Gunpowder Press House

c1945 RGPF Ledger WASC 1508 ; Gunpowder Press House

1972 ERDE List ; Pump House

1991 Mott McDonald survey

1992 RARDE List ; Pump House



NUMBER CONTINUATION SHEET

THE ROYAL GUNPOWDER FACTORY - WALTHAM ABBEY

THE ROYAL GUNPOWDER FACTORY - WALTHAM ABBEY

NUMBER	OLD SERIES 96b	RCHME NUMBER	N.G.R. TL 37842 01826
NAME/FUNCTION C.E. Stove No.3		START DATE 1908-1920	END DATE 1945?
CARTOGRAPHIC DEPICTION 1923 WASC 900/84 ; 96b C.E. Stove No.3		DOCUMENTARY REFERENCES c1925 RGPF Ledger WASC 1680 ; C.E. Stove No.3 1972 ERDE List ; Guncotton and Tetryl Stove/Burnt out 1992 RARDE List ; Guncotton and Tetryl Stove/Burnt out Proc court inqirey explosion RGPF 20-Aug-1940 G.C. Stove no 22	
PHOTOGRAPHY HISTORIC		PHOTOGRAPHY RCHME	
RELATIONSHIPS WITH OTHER MONUMENTS ASSOCIATED WITH: 93d			
CONDITION Good			

DESCRIPTION

- 1) CONSTRUCTIONAL MATERIAL
Brick and earthwork
- 2) ROOF MATERIALS AND STRUCTURE
-
- 3) POWER SOURCE
Electricity and steam heat
- 4) DIMENSIONS iii) HT wall 2.1m iv)DIA 10.7m

- 5) The guncotton stove survives as a circular brick a wall 2.1m in height and 10.7m, encircled by an earthen mound almost to wall height. The Stove was entered from the south west through a covered porch. The porch consists of a low brick wall into which bolts were set to secure the timber superstructure. Two concrete blocks on the opposite side of the modern track mark the positions of upright timbers. These formerly supported a cover over narrow guage railway that served the stove.

The within the earthen was timber framed circular round house set on a platform seperated from the enclosing wall by a narrow gully. The inner edge of this gully is lined with grey engineering bricks into which are set vertical bolts that formerly carried the timber frame of the building.

The heating was supplied to the stove by a single pipe which entered from the north west from motor house 93d. The pipe is constructed from joined sheet metal segments forming two flanged straights 2.41m and 2.41m in length with a bore of 30.2cm connected to a flanged curve. This in turn connected to an octagonal roof plate 92 cm x 92.3cm, bore 30.5cm. The pipe is lagged with fibrous abestos secured by chicken wire with an outer sheet metal coat.

Historic artefacts - Light fittings, nails and heating pipe, window glass?

THE ROYAL GUNPOWDER FACTORY - WALTHAM ABBEY

NUMBER	OLD SERIES 98a	RCHME NUMBER	N.G.R. TL 37815 01762
NAME/FUNCTION Guncotton Stove No.2	START DATE 1908-1920	END DATE 1945?	



CARTOGRAPHIC DEPICTION	DOCUMENTARY REFERENCES
1923 WASC 900/84 ; 98a Guncotton Stove No.22	1972 ERDE List ; Guncotton Stove/Burnt out 1992 RARDE List ; Guncotton Stove/Burnt out

PHOTOGRAPHY HISTORIC	PHOTOGRAPHY RCHME 1) 206/M/11 4 Mar 1993 Detail of Drying Rack 206/M/12 4 Mar 1993 Detail of steps on West side 206/M/13 4 Mar 1993 Drying Racks 206/M/14 4 Mar 1993 Detail of steps on West side 2) BB92/26161 98a Detail of interior of Guncotton Stove
-------------------------	---

RELATIONSHIPS WITH OTHER MONUMENTS

ASSOCIATED WITH:

CONDITION

DESCRIPTION

- 1) CONSTRUCTIONAL MATERIAL
- 2) ROOF MATERIALS AND STRUCTURE
- 3) POWER SOURCE
- 4) DIMENSIONS i) L ii) W iii) HT
- 5)



THE ROYAL GUNPOWDER FACTORY - WALTHAM ABBEY

NUMBER	OLD SERIES	RCHME NUMBER 108	N.G.R. TL37520 01815
NAME/FUNCTION Watch house		START DATE	END DATE 1899?
NO PHOTOGRAPHY AVAILABLE			
CARTOGRAPHIC DEPICTION		DOCUMENTARY REFERENCES	
PHOTOGRAPHY HISTORIC		PHOTOGRAPHY RCHME	
RELATIONSHIPS WITH OTHER MONUMENTS ASSOCIATED WITH:			
CONDITION Demolished			
DESCRIPTION 1) CONSTRUCTIONAL MATERIAL Brick 4) DIMENSIONS i) L 9m ii) W 6m 5) The watch house was demolished between 1897 and 1900. Odd sections of brick foundations and a sandstone door slab mark its site.			

THE ROYAL GUNPOWDER FACTORY - WALTHAM ABBEY			
NUMBER	OLD SERIES	RCHME NUMBER 108	N.G.R. TL37520 01815
NAME/FUNCTION Watch house		START DATE	END DATE 1899?
NO PHOTOGRAPHY AVAILABLE			
CARTOGRAPHIC DEPICTION		DOCUMENTARY REFERENCES	
PHOTOGRAPHY HISTORIC		PHOTOGRAPHY RCHME	
RELATIONSHIPS WITH OTHER MONUMENTS ASSOCIATED WITH:			
CONDITION Demolished			
DESCRIPTION 1) CONSTRUCTIONAL MATERIAL Brick 4) DIMENSIONS i) L 9m ii) W 6m 5) The watch house was demolished between 1897 and 1900. Odd sections of brick foundations and a sandstone door slab mark its site.			

THE ROYAL GUNPOWDER FACTORY - WALTHAM ABBEY			
NUMBER	OLD SERIES	RCHME NUMBER 114	N.G.R. TL37676 01965
NAME/FUNCTION Narrow guage railway		START DATE	END DATE
NO PHOTOGRAPHY AVAILABLE			
CARTOGRAPHIC DEPICTION		DOCUMENTARY REFERENCES	
PHOTOGRAPHY HISTORIC		PHOTOGRAPHY RCHME	
RELATIONSHIPS WITH OTHER MONUMENTS ASSOCIATED WITH:			
CONDITION Fair			
DESCRIPTION			
5) Section of insitu 18" guage railway, length 6m, with buffer stop at north end. Adjacent to the railway to the west is a rotten timber landing stage.			
Historic artefacts - section of track and buffer			

THE ROYAL GUNPOWDER FACTORY - WALTHAM ABBEY

NUMBER	OLD SERIES	RCHME NUMBER 186	N.G.R. TL37497 02075
NAME/FUNCTION Blast wall		START DATE 1940?	END DATE
NO PHOTOGRAPHY AVAILABLE			
CARTOGRAPHIC DEPICTION	DOCUMENTARY REFERENCES		
PHOTOGRAPHY HISTORIC	PHOTOGRAPHY RCHME		
RELATIONSHIPS WITH OTHER MONUMENTS ASSOCIATED WITH: 62?			
CONDITION	Good		
DESCRIPTION 1) CONSTRUCTIONAL MATERIAL Breeze block 4) DIMENSIONS i) L 8m ii) W 1.15m iii) HT 3.4m 5) Breeze block blast wall.			

THE ROYAL GUNPOWDER FACTORY - WALTHAM ABBEY			
NUMBER	OLD SERIES	RCHME NUMBER 188	N.G.R. TL 37542 O2065
NAME/FUNCTION Blast wall		START DATE 1940?	END DATE
NO PHOTOGRAPHY AVAILABLE			
CARTOGRAPHIC DEPICTION		DOCUMENTARY REFERENCES	
PHOTOGRAPHY HISTORIC		PHOTOGRAPHY RCHME	
RELATIONSHIPS WITH OTHER MONUMENTS ASSOCIATED WITH: 62			
CONDITION Good			
DESCRIPTION			
1)	CONSTRUCTIONAL MATERIAL Breeze block		
4)	DIMENSIONS i) L 8.45m ii) W 0.7m iii) HT 3.5m		
5)	Straight breeze block blast wall east of Mixing house 62.		

THE ROYAL GUNPOWDER FACTORY - WALTHAM ABBEY

NUMBER	OLD SERIES	RCHME NUMBER 189	N.G.R. TL37530 02055 TL37545 02085
NAME/FUNCTION Steam pipe		START DATE 1940?	END DATE
NO PHOTOGRAPHY AVAILABLE			
CARTOGRAPHIC DEPICTION		DOCUMENTARY REFERENCES	
PHOTOGRAPHY HISTORIC		PHOTOGRAPHY RCHME	
RELATIONSHIPS WITH OTHER MONUMENTS ASSOCIATED WITH: 62			
CONDITION Poor			
DESCRIPTION			
5) Line of concrete stanchions with iron hoops. Formerly carried a steam pipe, bore 27mm, lagged by asbestos covered by bitumen sheeting.			

THE ROYAL GUNPOWDER FACTORY - WALTHAM ABBEY			
NUMBER	OLD SERIES	RCHME NUMBER 195	N.G.R.
NAME/FUNCTION Pipeline		START DATE	END DATE
NO PHOTOGRAPHY AVAILABLE			
CARTOGRAPHIC DEPICTION		DOCUMENTARY REFERENCES	
PHOTOGRAPHY HISTORIC		PHOTOGRAPHY RCHME	
RELATIONSHIPS WITH OTHER MONUMENTS ASSOCIATED WITH:			
CONDITION Poor			
DESCRIPTION 1) CONSTRUCTIONAL MATERIAL Earthenware pipe 5) Earthen ware pipes external diameter set in concrete on an earth bank 0.6m in height.			

THE ROYAL GUNPOWDER FACTORY - WALTHAM ABBEY			
NUMBER	OLD SERIES	RCHME NUMBER 200	N.G.R. TL37630 01935
NAME/FUNCTION Steam pipe		START DATE 1940?	END DATE
NO PHOTOGRAPHY AVAILABLE			
CARTOGRAPHIC DEPICTION		DOCUMENTARY REFERENCES	
PHOTOGRAPHY HISTORIC		PHOTOGRAPHY RCHME	
RELATIONSHIPS WITH OTHER MONUMENTS ASSOCIATED WITH: RCHM 103, RCHM 115, S90			
CONDITION Poor			
DESCRIPTION			
3)	POWER SOURCE Steam		
5)	Row of concrete stanchions with iron hoops to carry a steam pipe, the pipe was carried over bridge RCHM 103 and along traverse RCHM 115 before crossing the canal to S90.		

THE ROYAL GUNPOWDER FACTORY - WALTHAM ABBEY


NUMBER	OLD SERIES	RCHME NUMBER 213	N.G.R.
NAME/FUNCTION Blast wall		START DATE 1940?	END DATE
NO PHOTOGRAPHY AVAILABLE			
CARTOGRAPHIC DEPICTION		DOCUMENTARY REFERENCES	
PHOTOGRAPHY HISTORIC		PHOTOGRAPHY RCHME	
RELATIONSHIPS WITH OTHER MONUMENTS ASSOCIATED WITH: 52, E16			
CONDITION Good			
DESCRIPTION 1) CONSTRUCTIONAL MATERIAL Breeze block 4) DIMENSIONS i) L 9.3m ii) W 1.4m iii) HT 3.2m 5) Breeze block blast wall to te east of wash water settling house 52			

THE ROYAL GUNPOWDER FACTORY - WALTHAM ABBEY			
NUMBER	OLD SERIES	RCHME NUMBER 231	N.G.R.
NAME/FUNCTION Overhead ?powerline		START DATE 189?	END DATE
NO PHOTOGRAPHY AVAILABLE			
CARTOGRAPHIC DEPICTION		DOCUMENTARY REFERENCES	
PHOTOGRAPHY HISTORIC		PHOTOGRAPHY RCHME	
RELATIONSHIPS WITH OTHER MONUMENTS ASSOCIATED WITH: 76a, 92a, 93c, 96b			
CONDITION Poor stumps only			
DESCRIPTION			
3)	POWER SOURCE Electricity?		
5)	Row of 'telegraph' type timber poles (now sawn down) with late nineteenth/early twentieth type pottery insulators. A pole is positioned opposite the entrance to each guncotton stove. It is thought the line carried electricity lines rather than telegraph wires.		

THE ROYAL GUNPOWDER FACTORY - WALTHAM ABBEY

NUMBER	OLD SERIES	RCHME NUMBER 265	N.G.R.
NAME/FUNCTION Building		START DATE	END DATE
NO PHOTOGRAPHY AVAILABLE			
CARTOGRAPHIC DEPICTION		DOCUMENTARY REFERENCES	
PHOTOGRAPHY HISTORIC		PHOTOGRAPHY RCHME	
RELATIONSHIPS WITH OTHER MONUMENTS ASSOCIATED WITH:			
CONDITION Destroyed			
<p>DESCRIPTION</p> <p>1) CONSTRUCTIONAL MATERIAL Timber</p> <p>2) ROOF MATERIALS AND STRUCTURE Flat wooden board</p> <p>3) POWER SOURCE None</p> <p>4) DIMENSIONS i) L 3.2m ii) W 2m iii) HT 1.6m</p> <p>5) Small roughly built timber structure to the south east of the burning ground.</p>			

THE ROYAL GUNPOWDER FACTORY - WALTHAM ABBEY

NUMBER U9	OLD SERIES	RCHME NUMBER	N.G.R. TL
NAME/FUNCTION		START DATE 1940?	END DATE 1945
			
CARTOGRAPHIC DEPICTION		DOCUMENTARY REFERENCES	
PHOTOGRAPHY HISTORIC		PHOTOGRAPHY RCHME	
RELATIONSHIPS WITH OTHER MONUMENTS			
ASSOCIATED WITH:			
CONDITION Fair			
DESCRIPTION 1) CONSTRUCTIONAL MATERIAL Breeze block 2) ROOF MATERIALS AND STRUCTURE Concrete slab 3) POWER SOURCE None 4) DIMENSIONS i) L 3.5m ii) W 2.35m iii) HT 2.3m 5) The building is entered through a single door on the east side it has asingle window which has been blocked.			

PHOTOGRAPHY

HISTORIC

WASC 788 GP press house No1 1972 x2
 WASC 789 GP press house No1 1940 x10
 WASC 1517 Gen views 05.1986 x3
 WASC 1543/1-4 Views of Gunpowder press house
 WASC 1543/10 Traverse wall
 WASC 1655/58-65 No 1 press house July 1940
 WASC 1543/5-9 Gunpowder press house water wheel

PHOTOGRAPHY

RCHME

1) 206/U/21 From west
 206/U/22 From west
 206/U/23 From north west
 206/F/16 29 Jan 1993 Gunpowder press from West
 206/F/17 29 Jan 1993 Water wheel for Hydraulic pump from South West
 206/F/18 29 Jan 1993 Hydraulic gunpowder press from South
 206/F/19 29 Jan 1993 Danger Building electric light
 206/L/36 09 Mar 1993 Danger Building Electric light
 206/L/37 09 Mar 1993 Gunpowder Press from West
 206/N/24 12 Mar 1993 Press house from South
 2) BB92/26197 103 & 104 Water Wheel House and Hydraulic Gunpowder Press, view from West.
 BB92/26198 104 Water Wheel House for Hydraulic Pump, view from South West.
 BB92/26199 104 Pit Wheel view from North East.
 BB92/26200 104 Hydraulic Pump view from North East.
 BB92/26201 104 Detail of Water Wheel to Hydraulic Pump view from West.
 BB92/26202 103 Hydraulic Gunpowder Press view from South East.

RELATIONSHIPS WITH OTHER MONUMENTS

ASSOCIATED WITH: 105/L 104

CONDITION Fair

DESCRIPTION

- 1) CONSTRUCTIONAL MATERIAL
 Brick formerly carrying a timber frame
- 2) ROOF MATERIALS AND STRUCTURE
 -
- 3) POWER SOURCE
 Waterwheel powering a hydraulic pump, latterly supported by an electric motor and pump, electric lighting
- 4) DIMENSIONS i) L 8.9m ii) W 7.1
- 5) The gunpowder press house was fired probably during the 1940s. The below floor brick foundations, in English bond, survive to their full height. The foundations are divided into three cells, the northern and southern cells are 2.1m in width and the central cell is 2m in width.

In the centre of the building are the substantial remains of the gunpowder press. A similar press in use on the RGPF site is described and illustrated in Smith F M 1871 A Handbook of the Manufacture and Proof of Gunpowder 45-49 and Wardell W H 1888 Handbook of Gunpowder and Guncotton 49-50.

Scattered around the building are fragments of slate upto 1cm in thickness some of which retain brass screws. Also lying loose in the building was a danger building light formerly attached to the outside of the window (similar to the one illustrated in Proc Inst Civil Engrs V.110 1891 p373).

Historic Artifacts- a considerable number of fittings relating to this building survive on the surface. Archaeological advice should be sort about its recording and recovery.

THE ROYAL GUNPOWDER FACTORY - WALTHAM ABBEY

NUMBER	OLD SERIES 103/1	RCHME NUMBER	N.G.R. TL 37675 01693
--------	---------------------	--------------	--------------------------

NAME/FUNCTION Traverse	START DATE 1806-27	END DATE
---------------------------	-----------------------	----------

NO PHOTOGRAPHY
AVAILABLE

CARTOGRAPHIC DEPICTION	DOCUMENTARY REFERENCES
1827 WASC 900/04 + MPH 271	Plans; L102 B01,B02 ; Plans and Elevations 1894 1908 RGPF Ledger WASC 1509 + WASC 1764 ; Traverse c1925 RGPF Ledger WASC 1680 ; Traverse c1945 RGPF Ledger WASC 1508 ; Traverse
1830 WO55 2694	
1830 WASC 900/05	
c1830 WASC 900/06	
c1835 WASC 900/07	
1861-1868 WASC 900/10A	
1865 WASC 900/13	
1865 WASC 900/14	
1871 SUPP5 682	
1865 WASC 900/38 + SUPP5 975	
1865 WASC 900/41A	
1865 WASC 900/42	
1897 WASC 900/53C	
c1910 WASC 900/65	
c1910 WASC 900/79	
1917 WASC 900/70	
1917 WASC 900/72	
1919 WASC 900/74	
c1920 WASC 900/80	
1923 WASC 900/84	
> 1940 WASC 900/91A	
1954 A - B.34	
c1960 WASC 900/94	
c1963 WASC 900/97	
1972 WASC 900/102	
1972 WASC 900/104	
1976 WASC 900/113	

PHOTOGRAPHY HISTORIC	PHOTOGRAPHY RCHME
-------------------------	----------------------

RELATIONSHIPS WITH OTHER MONUMENTS

ASSOCIATED WITH: 103.104

CONDITION Fair

DESCRIPTION

- 1) CONSTRUCTIONAL MATERIAL
Brick
- 2) ROOF MATERIALS AND STRUCTURE
-
- 3) POWER SOURCE
None
- 4) DIMENSIONS i) L 14.5m ii) W 4.6m iii) HT estimate 6m
- 5) The traverse is oval in shape and is constructed with battered brick walls which are in part cement rendered. No indication is present of the interior filling of the traverse.

The traverse appears to have been constructed during the first years of the nineteenth century. It was originally associated with a gunpowder corning mill that then fell into disuse. Around 1850 the mill site was reused for the siting of a water powered hydraulic pump 104 nad a gunpowder press 103.

THE ROYAL GUNPOWDER FACTORY - WALTHAM ABBEY

NUMBER L102, L103	OLD SERIES 104	RCHME NUMBER	N.G.R. TL 37675 01700
NAME/FUNCTION Corning House Press House No.2	START DATE 1806-27 c1850	END DATE pre 1827 c1941	

NO PHOTOGRAPHY
AVAILABLE

CARTOGRAPHIC DEPICTION	DOCUMENTARY REFERENCES
1827 WASC 900/04 + MPH 271 ; site of Former Corning House powered by Horses	Plans; L102,L103 B01,B02 ; Plans and Elevations c1894
1830 WO55 2694	
1830 WASC 900/05	1807 Statement of Property WO55 2694
c1830 WASC 900/06	1830 Statement of Property WO55 2351
c1835 WASC 900/07	1841 Statement of Property WO55 2856
1861-1868 WASC 900/10A	1851 Statement of Property WO55 3027
1865 WASC 900/13	
1865 WASC 900/14	1908 RGPF Ledger WASC 1509 + WASC 1764 ; Gunpowder Press House
1865 WASC 900/38 + SUPP5 975 ; Washing up House and Press House	c1925 RGPF Ledger WASC 1680 ; Gunpowder Press House
1865 WASC 900/41A ; Washing up House and Press House	c1945 RGPF Ledger WASC 1508 ; Gunpowder Press House
1865 WASC 900/42	
1897 WASC 900/53C	
c1910 WASC 900/65 ; Press House	1972 ERDE List ; Pump House
c1910 WASC 900/79 ; Press House	1991 Mott McDonald survey
1917 WASC 900/70 ; Pump and Press House	1992 RARDE List ; Pump House
1917 WASC 900/72 ; 103,104	
1919 WASC 900/74 ; 103,104	
c1920 WASC 900/80 ; 103	
1923 WASC 900/84 ; 103	
> 1940 WASC 900/91A ; 103	
1954 A - B.34 ; L102, L103	
c1960 WASC 900/94 ; L102, L103	
c1963 WASC 900/97 ; L102, L103	
1972 WASC 900/102 ; L102, L103	
1972 WASC 900/104	
1976 WASC 900/113	

PHOTOGRAPHY

HISTORIC

WASC 788 GP press house No1 1972 x2
WASC 789 GP press house No1 1940 x10
WASC 15:7 Gen views 05.1986 x3
WASC 15:3/1-4 Views of Gunpowder press house
WASC 15:3/10 Traverse wall
WASC 16:5/58-65 No 1 press house July 1940
WASC 15:3/5-9 Gunpowder press house water wheel

PHOTOGRAPHY

RCHME

- 1) 206/U/21 From west
206/U/22 From west
206/U/23 From north west
206/F/16 29 Jan 1993 Gunpowder press from West
206/F/17 29 Jan 1993 Water wheel for Hydraulic pump from South West
206/F/18 29 Jan 1993 Hydraulic gunpowder press from South
206/F/19 29 Jan 1993 Danger Building electric light
206/L/36 09 Mar 1993 Danger Building Electric light
206/L/37 09 Mar 1993 Gunpowder Press from West
206/N/24 12 Mar 1993 Press house from South
- 2) BB92/26197 103 & 104 Water Wheel House and Hydraulic Gunpowder Press, view from West.
BB92/26198 104 Water Wheel House for Hydraulic Pump, view from South West.
BB92/26199 104 Pit Wheel view from North East.
BB92/26200 104 Hydraulic Pump view from North East.
BB92/26201 104 Detail of Water Wheel to Hydraulic Pump view from West.
BB92/26202 103 Hydraulic Gunpowder Press view from South East.

RELATIONSHIPS WITH OTHER MONUMENTS

ASSOCIATED WITH: 103/1, 104

CONDITION Fair

DESCRIPTION

- 1) CONSTRUCTIONAL MATERIAL
Brick

- 2) ROOF MATERIALS AND STRUCTURE
The roof is barrel shaped, formed from corrugated iron (possibly of nineteenth century date) fixed to L irons running along the top of the wall and braced by two horizontal tension rods.

- 3) POWER SOURCE
Water powering a hydraulic pump latterly supplemented by an electric pump. Electric lighting probably of late nineteenth century date.

- 4) DIMENSIONS i) L 9.55m ii) W 5.35 iii) HT estimate 7.5m

- 5) The pump house is a single storey brick building, painted in small figures on its exterior is its former number L103. The pump house is divided into two cells the larger eastern cell 5.75m x 4.45m and smaller western cell 2.45m x 4.45m.

The smaller cell was originally a shoe room and was entered from the canal side through a single door and was lit by a single window. The room was originally timber lined, the positions of charred fixing timbers may be made out on the wall. Artificial lighting was originally supplied by a danger building light suspended on the outside of the window. The upper part of the light some of the iron pipe that encased the wiring survives fixed to the exterior of the building. This room was subsequently converted to house an electrically powered hydraulic pump to supplement the water wheel. The sandstone base and four mounting bolts to this pump survive. Pipes running at floor level from this room to the pump room are thought to be the remains of the steam heating system.

The larger cell housed the water powered hydraulic pump. This room was entered from the shoe room originally across a fender (L.102.B.02), defining a dirty and clean area, and through a door on the north east corner. The room was lit by a single window in the eastern gable. In the centre of the room are the largely intact remains of the water driven hydraulic pump. Horizontal holes in the wall mark the former positions of timbers to which a wall covering was fixed.

The water driven hydraulic pump was powered by a water wheel on the southern side of the building. The water to turn the wheel was brought along a canal from Millhead stream through the wheel before tipping into the tail race and into the old River Lee. The wheel is a low breast shot of cast iron construction. This was wasrme fo

aame di isas h troughsster6me wid and.9 0 4.22mame di in troughs

Above the tailrace the brickwork is supported by sheets of thick slate over two ?iron beams. formerly covered by a corrugated iron roof. Over the tail race was a toilet cubicle supported on large slate sheets and bricks.

THE ROYAL GUNPOWDER FACTORY - WALTHAM ABBEY

NUMBER	OLD SERIES 105	RCHME NUMBER	N.G.R. TL 37545 01660
NAME/FUNCTION Press House Magazine		START DATE 1807-27	END DATE 194?

NO PHOTOGRAPHY
AVAILABLE

<p>CARTOGRAPHIC DEPICTION</p> <p>1827 WASC 900/04 - MPH 271 1830 WO55 2694 1830 WASC 900/05 c1830 WASC 900/06 c1835 WASC 900/07 1861-1868 WASC 900/10A 1865 WASC 900/13 1865 WASC 900/14 1871 SUPP5 682 1865 WASC 900/38 + SUPP5 975 ; Press House Magazine 1865 WASC 900/41A ; Press House Magazine 1865 WASC 900/42 ; Press House Magazine 1897 WASC 900/53C c1910 WASC 900/65 c1910 WASC 900/79 1917 WASC 900/70 1917 WASC 900/72 ; 105 1919 WASC 900/74 ; 105 c1920 WASC 900/80 ; 105 1923 WASC 900/84 ; 105 > 1940 WASC 900/91A ; 105 1954 A - B.34 c1960 WASC 900/94 c1963 WASC 900/97 1972 WASC 900/102 1972 WASC 900/104 1976 WASC 900/113</p>	<p>DOCUMENTARY REFERENCES</p> <p>1908 RGPF Ledger WASC 1509 + WASC 1764 ; Press House Magazine c1925 RGPF Ledger WASC 1680 ; Press House Magazine c1945 RGPF Ledger WASC 1508 ; Press House Magazine</p>
--	---

PHOTOGRAPHY HISTORIC	PHOTOGRAPHY RCHME
-------------------------	----------------------

RELATIONSHIPS WITH OTHER MONUMENTS

ASSOCIATED WITH: 106, 107, 108

CONDITION	Demolished
-----------	------------

DESCRIPTION

- 5) No surface remains are visible. The survival of the foundations of the brick footings of 106 adjacent to this magazine may imply a below ground survival.

THE ROYAL GUNPOWDER FACTORY - WALTHAM ABBEY

NUMBER

OLD SERIES
106

RCHME NUMBER

N.G.R.
TL 37535 01656

NAME/FUNCTION
Press House Magazine

START DATE
1865-70

END DATE
194?

NO PHOTOGRAPHY
AVAILABLE

CARTOGRAPHIC DEPICTION

1865 WASC 900/38 + SUPP5 975 ; Press House
Magazines
1865 WASC 900/41A ; Press House Magazines
1865 WASC 900/42 ; Press House Magazines
1897- WASC 900/53C
c1910 WASC 900/65 ; Receiving Magazines
c1910 WASC 900/79
1917 WASC 900/70
1917 WASC 900/72 ; 106
1919 WASC 900/74 ; 106
c1920 WASC 900/80 ; 106
1923 WASC 900/84 ; 106
> 1940 WASC 900/91A ; 106
1954 A - B.34
c1960 WASC 900/94
c1963 WASC 900/97
1972 WASC 900/102
1972 WASC 900/104
1976 WASC 900/113

DOCUMENTARY REFERENCES

1908 RGPF Ledger WASC 1509 + WASC 1764 ;
Press House Magazine
c1925 RGPF Ledger WASC 1680 ; Press House
Magazine
c1945 RGPF Ledger WASC 1508 ; Press House
Magazine

PHOTOGRAPHY
HISTORIC

PHOTOGRAPHY
RCHME

RELATIONSHIPS WITH OTHER MONUMENTS

ASSOCIATED WITH: 105, 107, 108

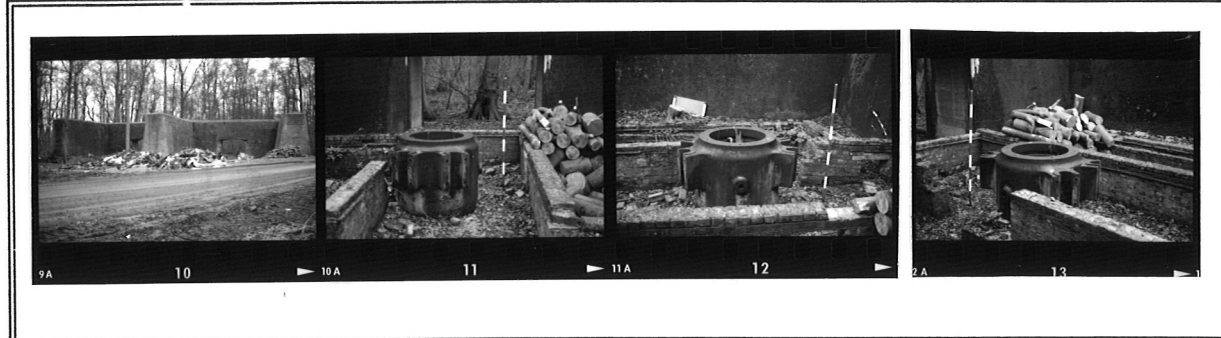
CONDITION Demolished

DESCRIPTION

5) The west wall and a section of the north wall of this building is visible as wall footing.

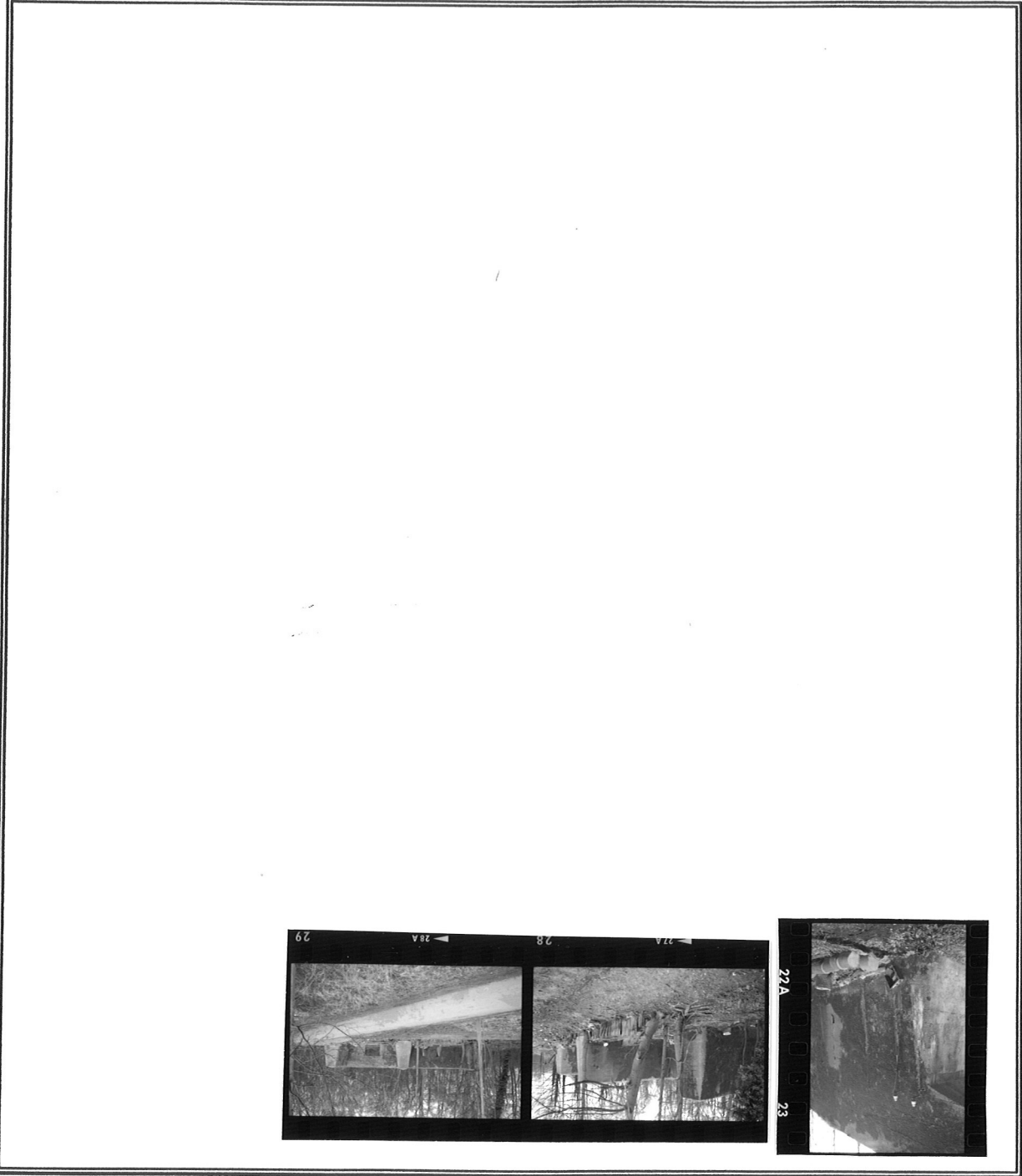
THE ROYAL GUNPOWDER FACTORY - WALTHAM ABBEY

NUMBER	OLD SERIES 107	RCHME NUMBER	N.G.R. TL 37482 01660
NAME/FUNCTION Moulding house No 4 Cordite blending house No.3 C.E. Magazine Blank Expense Magazine Tetryl packing house		START DATE 1884-5	END DATE



<p>CARTOGRAPHIC DEPICTION</p> <p>1865 WASC 900/38 + SUPP5 975 ; Moulding House No.4</p> <p>1865 WASC 900/41A ; Moulding House No.4</p> <p>1865 WASC 900/42 ; No.3 Cordite Blending House</p> <p>1897 WASC 900/53C</p> <p>c1910 WASC 900/65 ; Blank Expense Magazine</p> <p>c1910 WASC 900/79 ; Blank Expense Magazine</p> <p>1917 WASC 900/70 ; Blank Expense Magazine</p> <p>1917 WASC 900/72 ; 107</p> <p>1919 WASC 900/74 ; 107</p> <p>c1920 WASC 900/80 ; 107</p> <p>1923 WASC 900/84 ; 107</p> <p>> 1940 WASC 900/91A ; 107</p> <p>1954 A - B.34 ; 107</p> <p>c1960 WASC 900/94 ; 107</p> <p>c1963 WASC 900/97 ; 107</p> <p>1972 WASC 900/102</p> <p>1972 WASC 900/104</p> <p>1976 WASC 900/113</p>	<p>DOCUMENTARY REFERENCES</p> <p>Plan; 107 B01 - 30/4/1894 ; Moulding House No.4</p> <p>1908 RGPF Ledger WASC 1509 + WASC 1764 ; Blank Expense Magazine</p> <p>c1925 RGPF Ledger WASC 1680 ; Blank Expense Magazine</p> <p>c1945 RGPF Ledger WASC 1508 ; Blank Expense Magazine</p> <p>1992 RARDE List ; Tetryl Packing House</p>
--	--

<p>PHOTOGRAPHY HISTORIC</p>	<p>PHOTOGRAPHY RCHME</p> <p>1) 206/F/10 28 Jan 1993 From South East</p> <p>206/F/11-28 Jan 1993 Hydraulic Press Base from South East</p> <p>206/F/12 28 Jan 1993 Detail of Hydraulic press base</p> <p>206/F/13 28 Jan 1993 Detail of Hydraulic press base</p> <p>206/N/23 12 Mar 1993 Detail of Danger Building lighting</p> <p>206/Q/28 16 Mar 1993 From West</p> <p>206/Q/29 16 Mar 1993 From South</p> <p>2) BB92/26220 107 and 108 Moulding House view from South East.</p>
------------------------------------	---



NUMBER	CONTINUATION SHEET
--------	--------------------

THE ROYAL GUNPOWDER FACTORY - WALTHAM ABBEY

RELATIONSHIPS WITH OTHER MONUMENTS

ASSOCIATED WITH: L102, L103, 105, 106, 108a ABUTS: 108

CONDITION Good

DESCRIPTION

- 1) CONSTRUCTIONAL MATERIAL
Cast concrete
- 2) ROOF MATERIALS AND STRUCTURE
Galvanised shee
- 3) POWER SOURCE
(i) Hydraulic (ii) Electricity
- 4) DIMENSIONS 107 and 108 i) L 26.4m ii) W 12.8m iii) HT estimate 6m
- 5) Buildings 107 and 108 are described together

The Press houses were screened by a cast concrete E shaped traverse. Two construction phases are visible in the traverse, a near vertical joint on the north side marks where 107 abuts against 108. It is also noticeable that the concrete of 107 is more roughly finished than 108.


The press house each sat within one of the compartments, the press houses were timber framed structures set on brick foundations. In 107 the foundations measure 7.65m x 6.33m. Within the building is a large concrete block placed slightly off centre, presumably the press mounting block. In 108 the brick foundations measure 7.78m x 6.3m. Within this building in a similar off centre position is a large cast iron press base set on a concrete block. It is presumed that the press base would have been underneath the floor when the building was in operation.

The press houses were served by a canal and landing stage to the south and were served by four expense magazines L102, L103, 105 and 106. The building could also be entered through two large openings on the north wall.

Within the building are fragments of galvanised roof sheeting and galvanised gutters. Attached to the north wall of the building are conical shaped insulators, of late nineteenth century type, and a cast iron switch box. All the wiring serving the building was encased in small bore metal pipes.

Historic Artifacts- Press base, metal building fittings

THE ROYAL GUNPOWDER FACTORY - WALTHAM ABBEY

NUMBER 108	OLD SERIES	RCHME NUMBER	N.G.R. TL 37467 01658
NAME/FUNCTION Moulding House No.4 Cordite Blending House No.3 Packing House No.1		START DATE 1882-3 1898?	END DATE 1898?
<div style="display: flex; justify-content: space-around; align-items: center;">  <div style="margin-left: 20px;"> PHOTOGRAPHY E </div> </div>			
CARTOGRAPHIC DEPICTION 1865 WASC 900/38 + SUPP5 975 ; Moulding House No.4 1865 WASC 900/41A ; Muolding House No.4 1865 WASC 900/42 ; No.3 Cordite Blending House 1897 WASC 900/53C c1910 WASC 900/65 c1910 WASC 900/79 1917 WASC 900/70 1917 WASC 900/72 ; 108 1919 WASC 900/74 ; 108 c1920 WASC 900/80 ; 108 1923 WASC 900/84 ; 108 >1940 WASC 900/91A ; 108 1954 A - B.34 ; 108 c1960 WASC 900/94 ; 108 c1963 WASC 900/97 1972 WASC 900/102 1972 WASC 900/104 1976 WASC 900/113		DOCUMENTARY REFERENCES 1908 RGPF Ledger WASC 1509 + WASC 1764 ; Packing House c1925 RGPF Ledger WASC 1680 ; Packing House c1945 RGPF Ledger WASC 1508 ; Packing House 1992 RARDE List ; Tetryl Packing House	
PHOTOGRAPHY HISTORIC		PHOTOGRAPHY RCHME 1) 206/C/18 02 Feb 1993 Hydraulic press base 206/C/19 02 Feb 1993 Hydraulic press base 206/F/10 28 Jan 1993 From South East 206/F/11 28 Jan 1993 Hydraulic Press Base from South East 206/Q/28 16 Mar 1993 From West 206/Q/29 16 Mar 1993 From South 2) BB92/26220 107 and 108 Moulding House view from South East. BB92/26221 108 Hydraulic Press Base view from South West.	
RELATIONSHIPS WITH OTHER MONUMENTS ASSOCIATED WITH: 105. 106, L102, L103, 108a ABUTTED BY: 107			

CONDITION	DESCRIPTION
Good	5) Described with 107

THE ROYAL GUNPOWDER FACTORY - WALTHAM ABBEY

NUMBER

OLD SERIES

RCHME NUMBER

N.G.R.

167

TL 37705 01682

NAME/FUNCTION

Building

START DATE

1940?

END DATE

NO PHOTOGRAPHY
AVAILABLE

CARTOGRAPHIC DEPICTION

DOCUMENTARY REFERENCES

PHOTOGRAPHY
HISTORIC

PHOTOGRAPHY
RCHME

RELATIONSHIPS WITH OTHER MONUMENTS
ASSOCIATED WITH:

CONDITION Fair

DESCRIPTION

1) CONSTRUCTIONAL MATERIAL
Cast concrete

2) ROOF MATERIALS AND STRUCTURE
Concrete

3) POWER SOURCE
None?

4) DIMENSIONS i) L 9.2m ii) W 4m iii) HT 2.35m

5) Semi-circular concrete shelter, cast over corrugated iron sheeting. The shelter was formerly entered through double doors on the south side and a single door on the north side. The north side is screened by a timber traverse packed with earth, length 4.11m, width 1.2m, height 2.05m, a painted sign reads 'No 4'.

Historic Artifacts- hand cranked air raid siren on the north wall.

THE ROYAL GUNPOWDER FACTORY - WALTHAM ABBEY

NUMBER	OLD SERIES	RCHME NUMBER 173	N.G.R. TL37517 01644 TL37530 01649
NAME/FUNCTION Pipe bridge	START DATE	END DATE	
NO PHOTOGRAPHY AVAILABLE			
CARTOGRAPHIC DEPICTION	DOCUMENTARY REFERENCES		
PHOTOGRAPHY HISTORIC	PHOTOGRAPHY RCHME		
RELATIONSHIPS WITH OTHER MONUMENTS ASSOCIATED WITH: RCHM 173, RCHM 174, RCHM 175, RCHM 176, RCHM 177			
CONDITION	Fair		
DESCRIPTION			
1)	CONSTRUCTIONAL MATERIAL Steel		
4)	DIMENSIONS i) L 8.05m ii) W 0.75m iii) HT 2.4m		
5)	Pipe bridge carrying two steam pipes over a canal.		

THE ROYAL GUNPOWDER FACTORY - WALTHAM ABBEY

NUMBER	OLD SERIES	RCHME NUMBER 174	N.G.R. TL 37523 01653
NAME/FUNCTION Footbridge		START DATE	END DATE
NO PHOTOGRAPHY AVAILABLE			
CARTOGRAPHIC DEPICTION		DOCUMENTARY REFERENCES	
PHOTOGRAPHY HISTORIC		PHOTOGRAPHY RCHME	
RELATIONSHIPS WITH OTHER MONUMENTS ASSOCIATED WITH: RCHM 173, RCHM 175, RCHM 176, RCHM 177			
CONDITION Fair			
DESCRIPTION			
1) CONSTRUCTIONAL MATERIAL Angle iron			
4) DIMENSIONS i) L 9.3m ii) W 1.05m iii) HT deck above ground 2.25m			
5) Footbridge formed from angle irons with timber deck.			

THE ROYAL GUNPOWDER FACTORY - WALTHAM ABBEY

NUMBER	OLD SERIES	RCHME NUMBER 175	N.G.R. TL 37508 01654 TL 37525 01669
NAME/FUNCTION Pipeline		START DATE	END DATE
NO PHOTOGRAPHY AVAILABLE			
CARTOGRAPHIC DEPICTION		DOCUMENTARY REFERENCES	
PHOTOGRAPHY HISTORIC		PHOTOGRAPHY RCHME	
RELATIONSHIPS WITH OTHER MONUMENTS ASSOCIATED WITH: RCHM 173, RCHM 174, RCHM 176, RCHM 177			
CONDITION Fair			
<p>DESCRIPTION</p> <p>1) CONSTRUCTIONAL MATERIAL Steel</p> <p>4) DIMENSIONS i) L 22.5m iii) HT above ground 2.65m</p> <p>5) Steam pipe over canal, it is supported by a concrete post at either end with a tubular steel support in the middle of the canal. The pipe is supported by a steel tension cable along its top.</p>			

THE ROYAL GUNPOWDER FACTORY - WALTHAM ABBEY

NUMBER	OLD SERIES	RCHME NUMBER 176	N.G.R. TL 37498 01667 TL 37500 01652
--------	------------	---------------------	--

NAME/FUNCTION Pipebridge	START DATE	END DATE
-----------------------------	------------	----------

NO PHOTOGRAPHY
AVAILABLE

CARTOGRAPHIC DEPICTION	DOCUMENTARY REFERENCES
------------------------	------------------------

PHOTOGRAPHY HISTORIC	PHOTOGRAPHY RCHME
-------------------------	----------------------

RELATIONSHIPS WITH OTHER MONUMENTS
ASSOCIATED WITH: RCHM 173, RCHM 174, RCHM 175, RCHM 177

CONDITION Fair

DESCRIPTION
1) CONSTRUCTIONAL MATERIAL
Angle irons
4) DIMENSIONS i) L 15.8m ii) W 0.7m iii) HT pier 3.15m
5) Pipe line over canal

THE ROYAL GUNPOWDER FACTORY - WALTHAM ABBEY

NUMBER

OLD SERIES

RCHME NUMBER
178

N.G.R.
TL 37532 01656

NAME/FUNCTION

Sentry box

START DATE

END DATE

NO PHOTOGRAPHY
AVAILABLE

CARTOGRAPHIC DEPICTION

DOCUMENTARY REFERENCES

PHOTOGRAPHY
HISTORIC

PHOTOGRAPHY
RCHME

RELATIONSHIPS WITH OTHER MONUMENTS
ASSOCIATED WITH: Burning ground

CONDITION Good?

DESCRIPTION

- 1) **CONSTRUCTIONAL MATERIAL**
Brick
- 2) **ROOF MATERIALS AND STRUCTURE**
Corrugated asbestos
- 3) **POWER SOURCE**
None
- 4) **DIMENSIONS** i) L 1.3m ii) W 1.2m iii) HT 2.2m
- 5) The sentry box is placed on a concrete slab, the eastern side is open. There is an open slit window on the south side.

