

WASC 1926

Video and Notes  
on Dismantling of  
Round Houses  
S. Site  
Mar 1998

DATE

MARCH 1998

LOCATION

DISMANTLING OF  
ROUND HOUSES  
WASS

REF N544

@ 486

RUNNING TIME

TITLE

ROUND HOUSES  
N544 @ 486

NUMBER

**BRITISH AEROSPACE**



**Royal Ordnance**

ROUND HOUSES

N544 @ 486

Royal Ordnance plc  
Environmental Services Group  
Westcott Venture Park  
Aylesbury  
Buckinghamshire  
HP18 0NP United Kingdom  
Telephone (01296) 652139  
Facsimile (01296) 652121

*With Compliments*  
**Graham Vincent**  
*Site Remediation Project Manager*

Produced by Replay Productions on behalf of the  
Kodak Express Quality Control Service network.

Insert this side into recorder

Do not touch the tape inside

VHS

*1/16*

Hertfordshire Arch Trust  
Royal Ordnance Factory  
(Waltham Abbey)  
Ref P779  
Video Footage  
Dismantling Buildings 486 & 544

Re-order Code: 240982-Fnt

**DPRKX** Papersafe Ruled Books

BUILDING 544

NITRO-GLYCERINE WASH  
HOUSE DISMANTLING

FIELD NOTES

REF. P779

# BUILDING 544

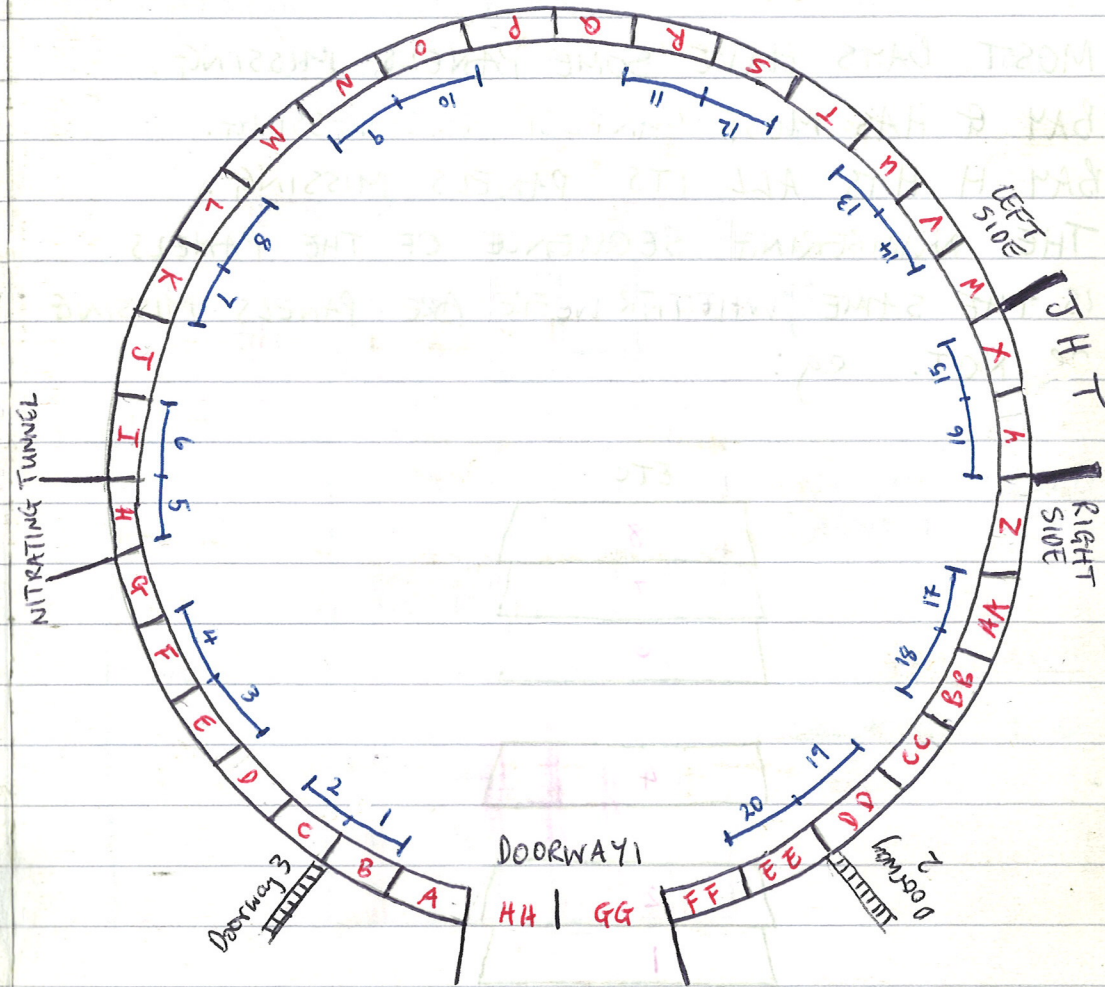
## NITRO-GLYCERINE WASH HOUSE

### ABBREVIATIONS

- BIWP = BOTTOM INTERNAL WALL PANEL
- IWP = INTERNAL WALL PANELS
- EWP = EXTERNAL WALL PANEL
- T = TOP      ESB = EXTERNAL SUPPORT BEAM
- B = BOTTOM
- UM = UPPER MIDDLE      LM = LOWER MIDDLE
- RST = ROOF SUPPORT JOIST
- USTR = UPPER STRUT BETWEEN ROOF JOISTS
- LSTR = LOWER " " " "
- BA, BB = BARREL A - BARREL B
- JHT = JUNCTION HOUSE TUNNEL
- PL = PLATFORM LEG      PH = PLATFORM HORIZONTAL
- PCB = PLATFORM CROSS BEAM
- WFW U = WALL FRAMEWORK UPRIGHT
- WFW H = WALL FRAMEWORK HORIZONTAL
- UPFB = UPPER PLATFORM FLOORBOARD
- UP = UPPER PLATFORM
- LP = LOWER PLATFORM
- UPS = UPPER PLATFORM SUPPORT
- RBS = ROOF BOARD SUPPORT

||| = WINDOW

①

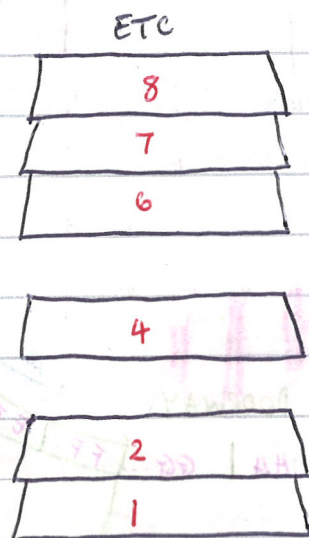


PLAN SHOWING LOCATION OF EXTERNAL WALL PANEL BAYS, WINDOWS, 2 SMALL TUNNELS  
EACH BAY HAS A LETTER. EACH EWP WITHIN THAT BAY HAS A NUMBER RISING FROM 1 AT THE BOTTOM TO 13 BELOW A WINDOW OR 17 BELOW THE ROOF.

See photo: 6, 7, 8, 11, 29, 30, 71, 73

② eg: BAYS B + C HAVE 13 EWP'S EACH  
 BAYS A + D HAVE 17 EWP'S EACH

MOST BAYS HAVE SOME PANELS MISSING.  
 BAY G HAS MOST OF ITS PANELS MISSING.  
 BAY H HAS ALL ITS PANELS MISSING.  
 THE NUMBERING SEQUENCE OF THE PANELS  
 IS THE SAME WHETHER THERE ARE PANELS MISSING  
 OR NOT. eg:

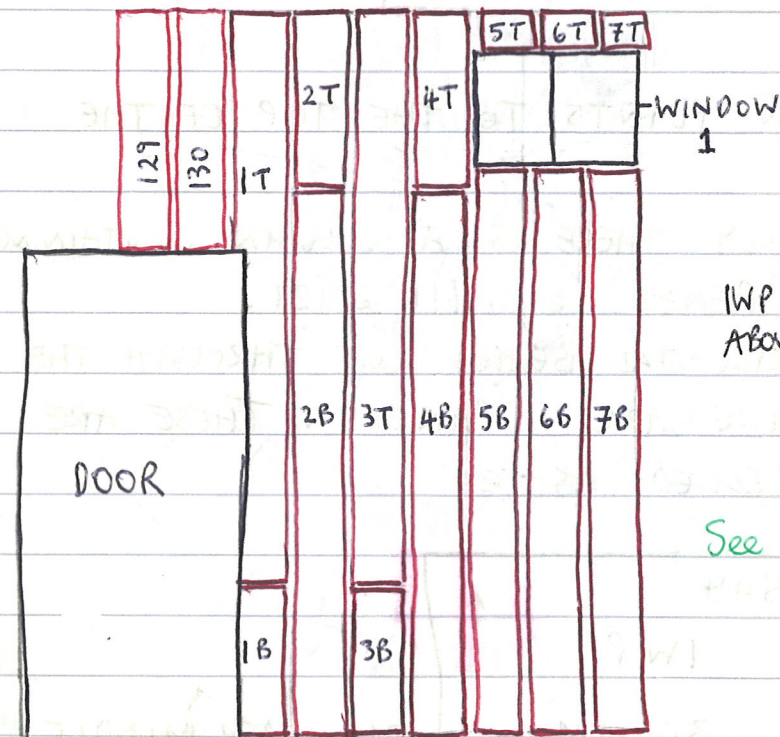


UNLIKE BUILDING 486 THIS ONE (544) HAS  
 NO PANELS THAT CROSS MORE THAN ONE  
 BAY.

See Photo: 6, 8

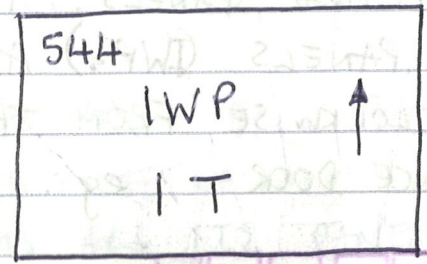
③

ON THE INSIDE 544 HAS WALLS  
 MADE UP OF VERTICAL PANELS. THESE  
 INTERIOR WALL PANELS (IWP'S) ARE  
 LABELLED UP CLOCKWISE FROM THE EDGE  
 OF THE ENTRANCE DOOR. eg:



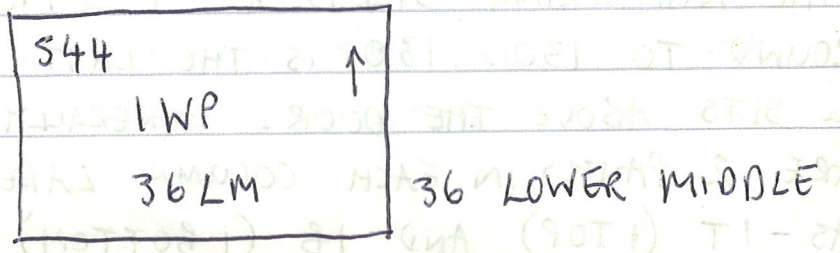
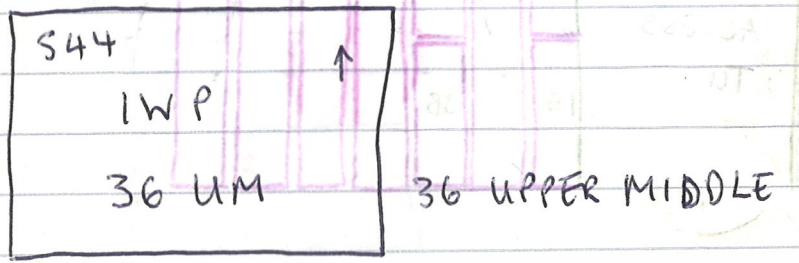
THE NUMBERING STARTS AT 1 & MOVES  
 ROUND TO 130. 130 IS THE LAST PANEL  
 & SITS ABOVE THE DOOR. GENERALLY THERE  
 ARE 2 PANELS IN EACH COLUMN LABELLED:  
 1T (1 TOP) AND 1B (1 BOTTOM)  
 2T (2 TOP) AND 2B (2 BOTTOM)

④ EACH PANEL HAS A LABEL eg:

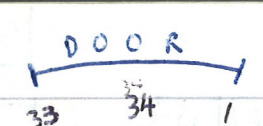


THE ARROW POINTS TO THE TOP OF THE PANEL.

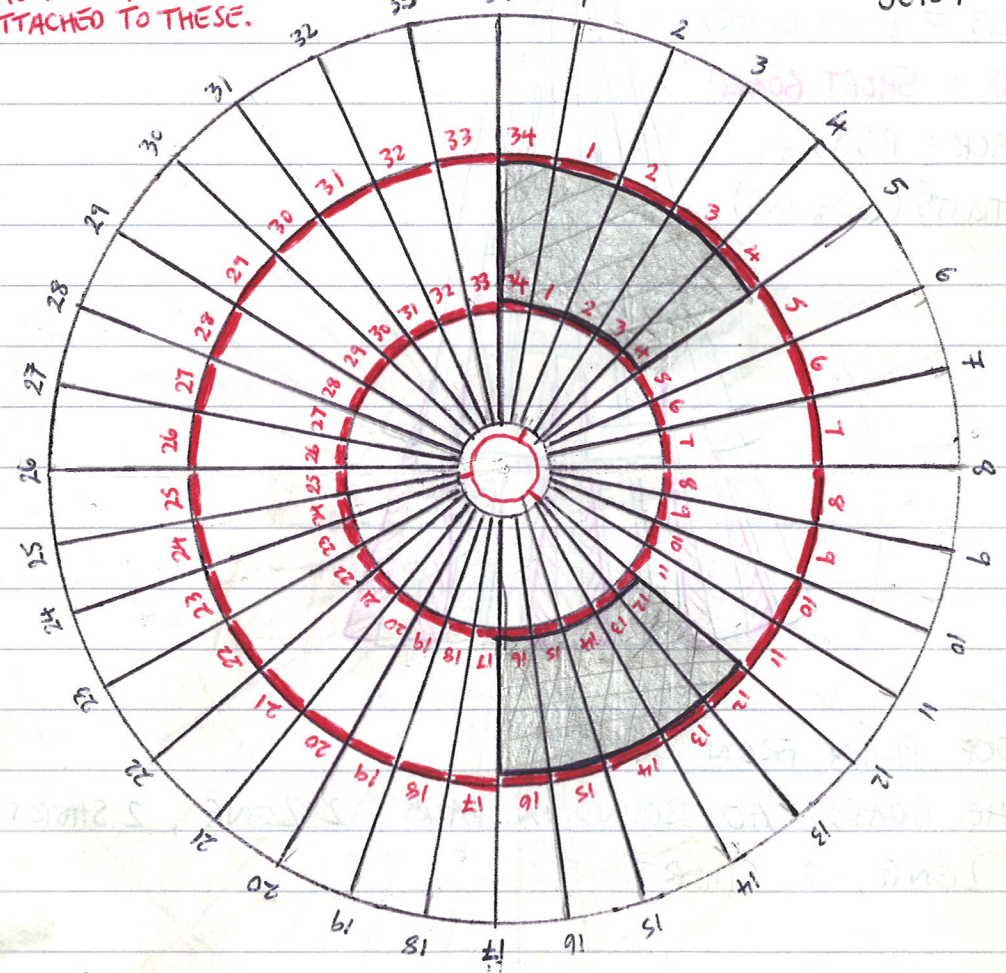
OCCASIONALLY THERE IS A COLUMN CONTAINING ONLY ONE PANEL eg: 111 & 121. WHERE HORIZONTAL BEAMS CUT THROUGH THE WALLS THERE ARE 4 PANELS. THESE ARE THEN LABELLED AS - eg:



RED = UPPER & LOWER STRUTS BETWEEN RSTJ'S. THE ROOF PLANKS ARE ATTACHED TO THESE.



BLACK = RSTJ ROOF SUPPORT JOIST



See Photos: 24, 25, 42, 47, 49

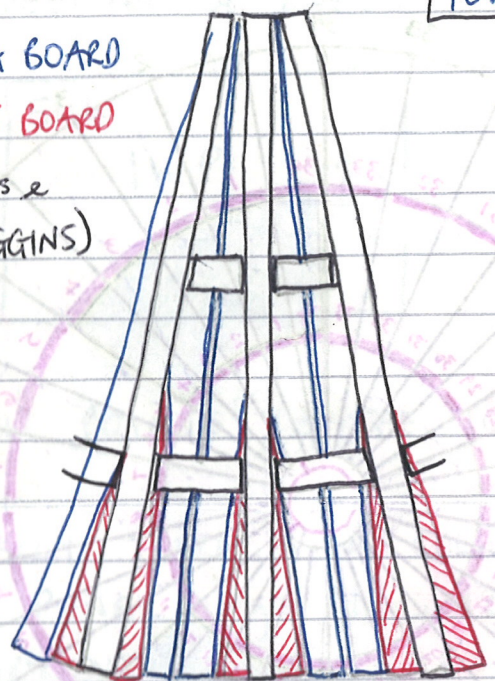
PLAN OF ROOF. NUMBER 1 RSTJ IS SITUATED ABOVE THE RIGHT HAND EDGE OF THE DOOR. THE NUMBERS GO ROUND CLOCK WISE AND END AT 34. 34 IS SITUATED ABOVE THE CENTRE OF THE DOOR.

SHADING IS WHERE SKYLIGHTS WERE BUILT IN.

6

SEE 486 PAGE 15  
FOR OUTSIDE DIAGRAM

BLUE = LONG BOARD  
RED = SHORT BOARD  
BLACK = RSTs &  
STRUTS (NOGGINS)



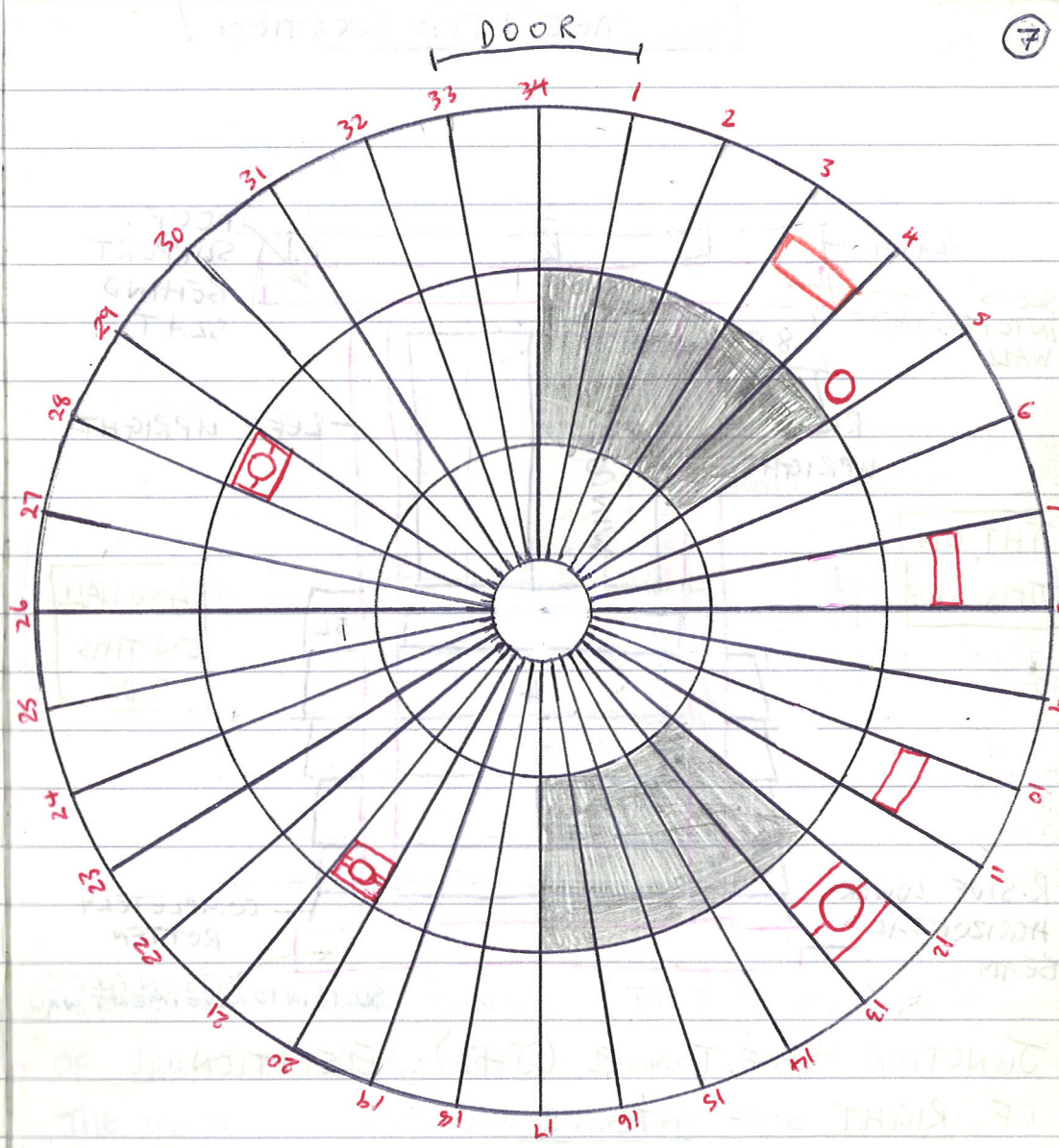
ROOF PLAN FROM INSIDE

THE BOARDS GO ROUND IN PAIRS, 2 LONG, 2 SHORT  
2 LONG, 2 SHORT.

ALL ROOF BOARDS ARE IN VERY GOOD CONDITION.

See Photos: 25, 42, 48

7

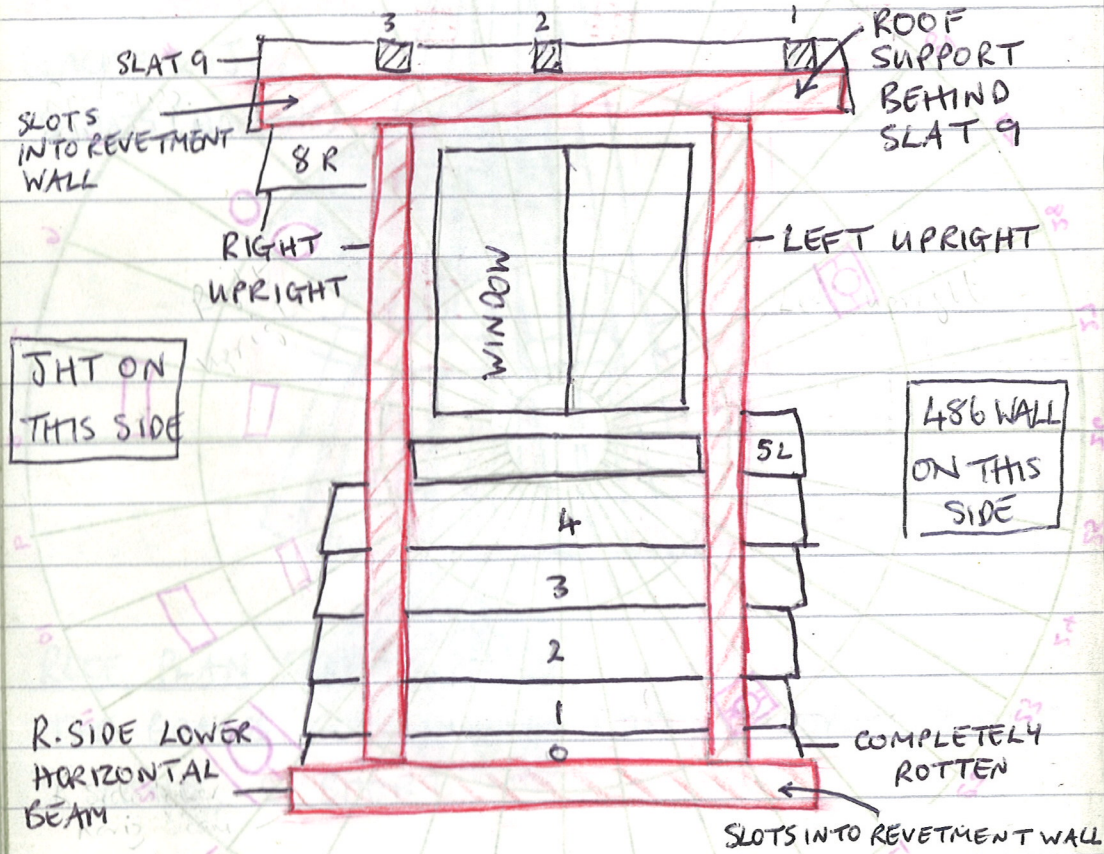


See Photos: 20, 21, 22, 23, 24, 25,

ROOF PLAN SHOWING WOODEN HORIZONTAL PANELS  
AND CIRCULAR LIGHT FITTINGS.

Shading shows location of sky-lights.

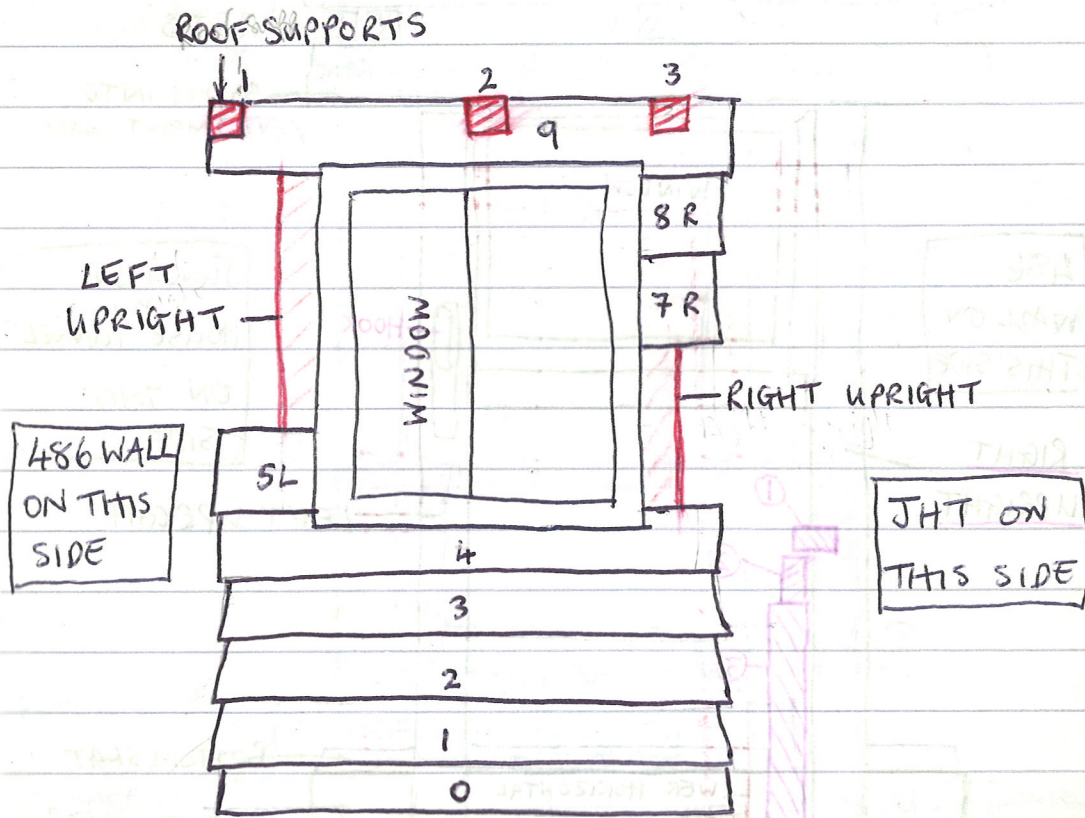




JUNCTION HOUSE TUNNEL (JHT). ELEVATION OF RIGHT SIDE INTERIOR

See Photo: 33

JHT LEFT SIDE INTERIOR & EXTERIOR WOULD HAVE BEEN THE SAME AS THE RIGHT SIDE. ALL SLATS HAVE FALLEN OFF THE EXTERIOR.



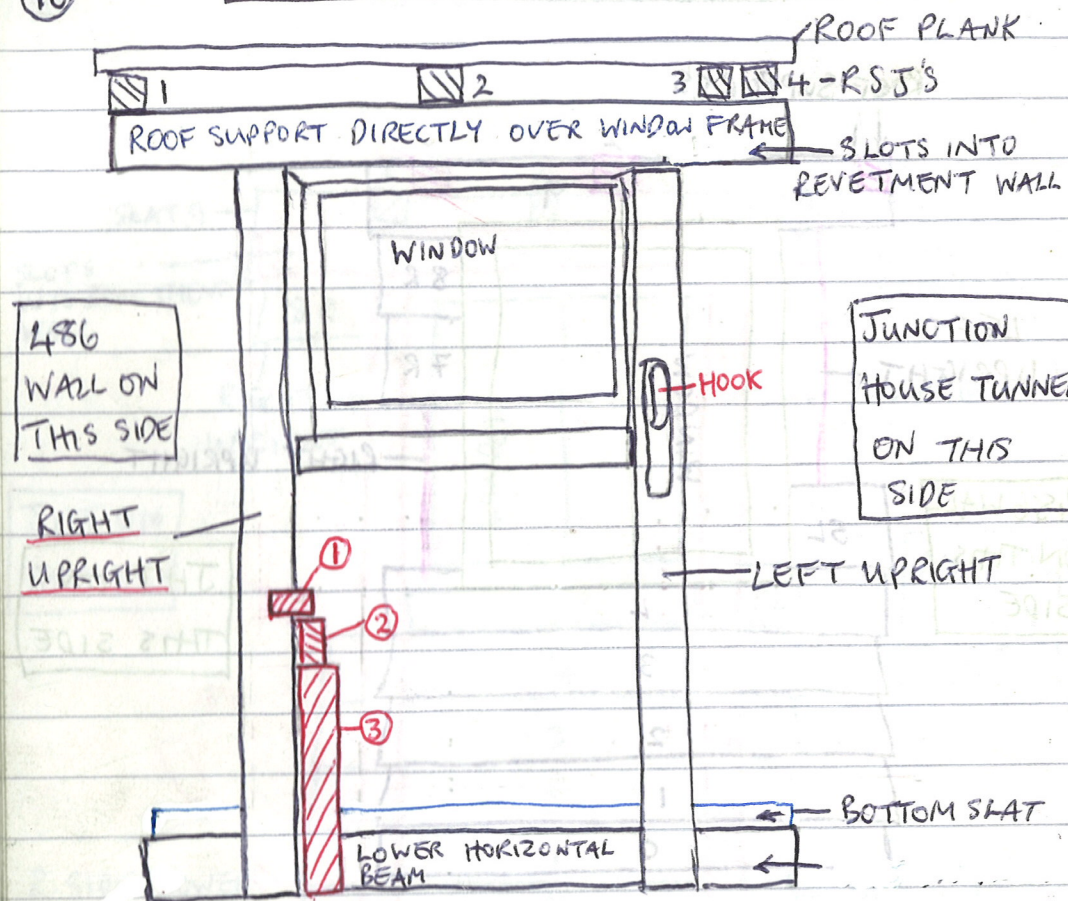
JUNCTION HOUSE TUNNEL (JHT). ELEVATION OF RIGHT SIDE EXTERIOR

THE WINDOW IS ATTACHED TO THE 2 UPRIGHTS.

See Photo: 31

10

SEE PAGE 1 FOR LOCATION



JUNCTION HOUSE TUNNEL LEFT SIDE INTERIOR

SHOWING SUPPORT ARM IN RED WHICH IS ATTACHED TO RIGHT UPRIGHT & MAIN FRAME

BETWEEN BAYS X & Y.

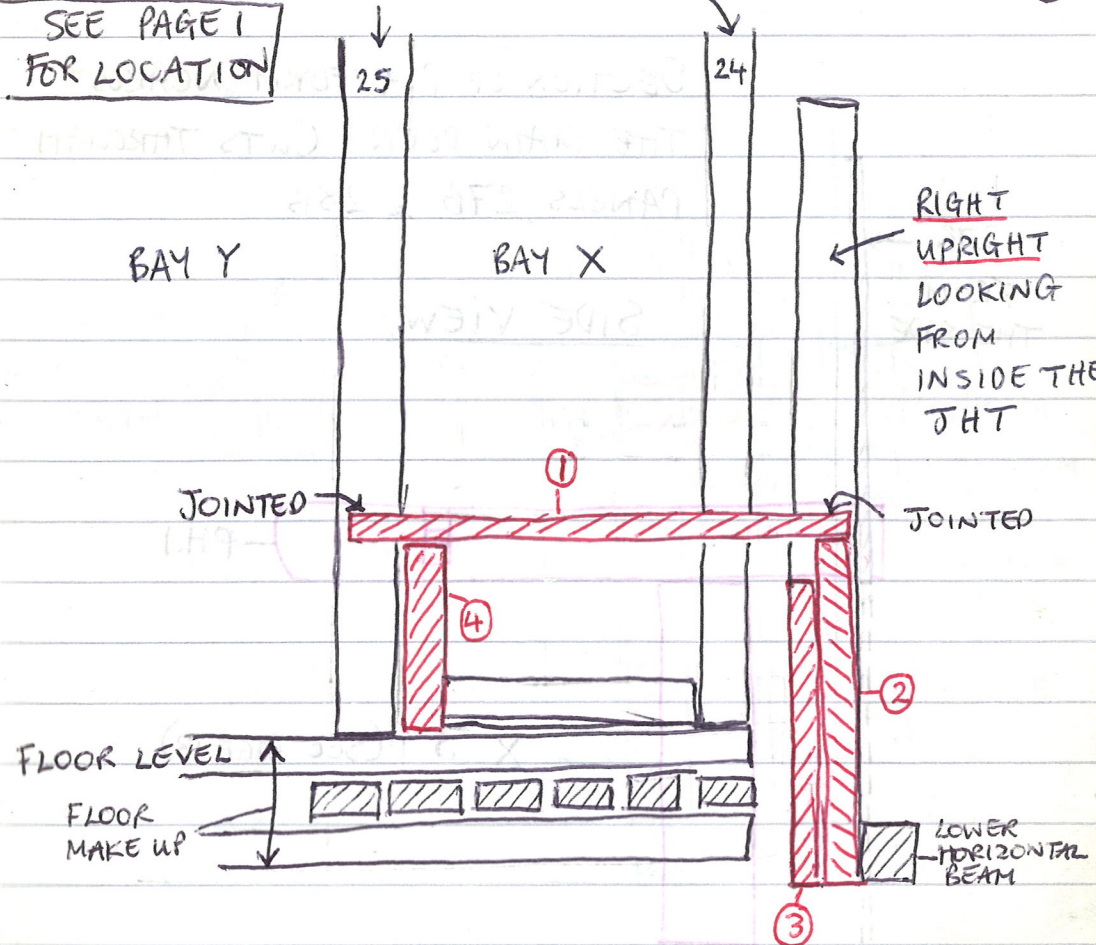
SLAT & COVERED ROOF SUPPORTS.

See photo: 18, 34

11

MAIN FRAME BEAMS

SEE PAGE 1 FOR LOCATION



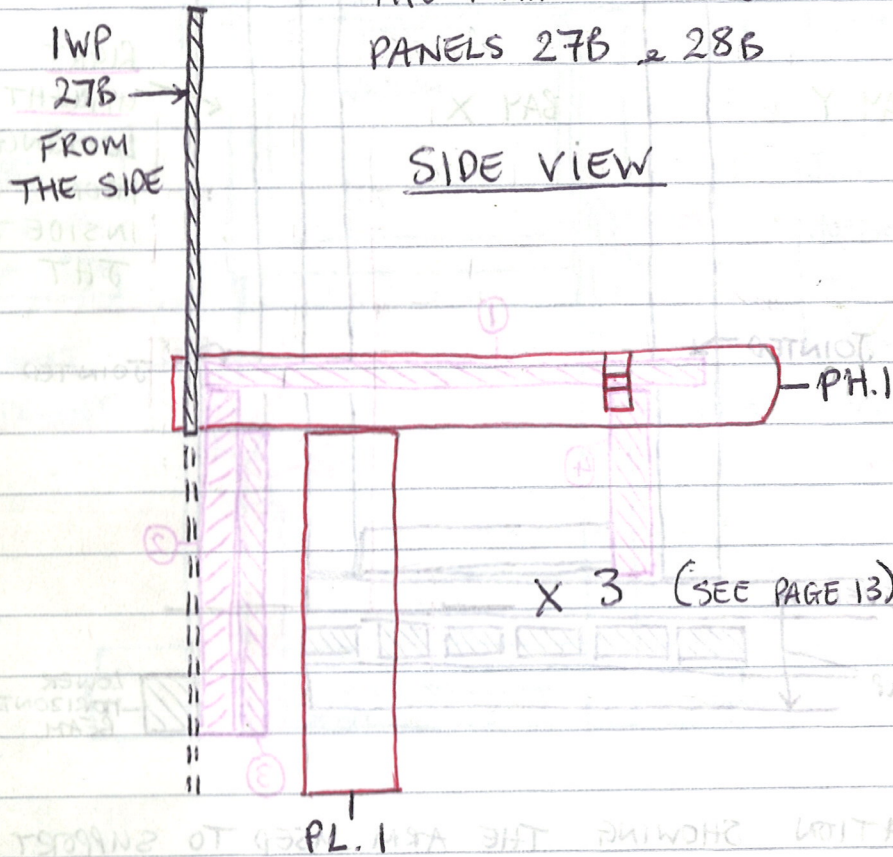
ELEVATION SHOWING THE ARM USED TO SUPPORT JHT (LEFT SIDE) RIGHT UPRIGHT.

THIS IS THE VIEW LOOKING INTO SH4 THROUGH BAY X FROM INSIDE THE JUNCTION HOUSE TUNNEL.

See photo: 34

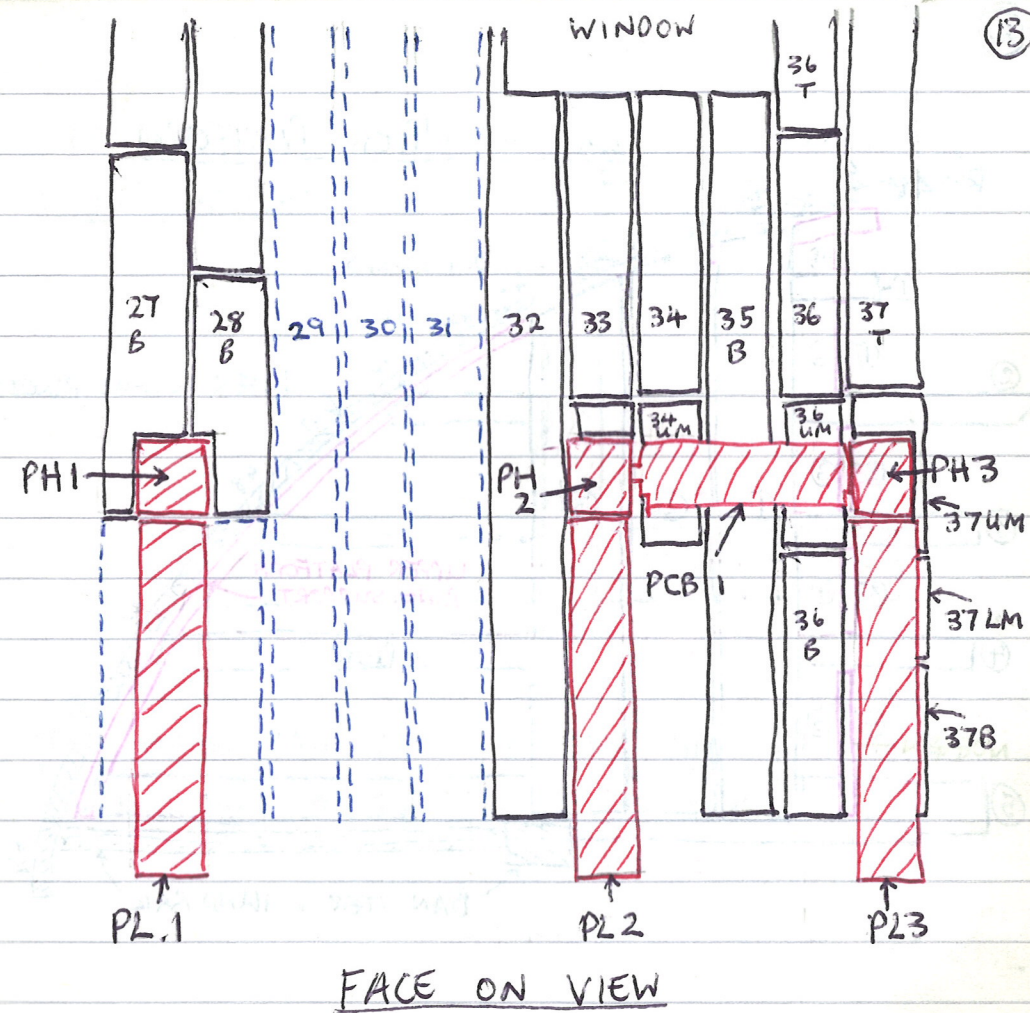
(12)

SECTION OF PLATFORM NEAREST THE MAIN DOOR. CUTS THROUGH PANELS 27B & 28B



See Photo: 5, 13, 15, 37

(13)

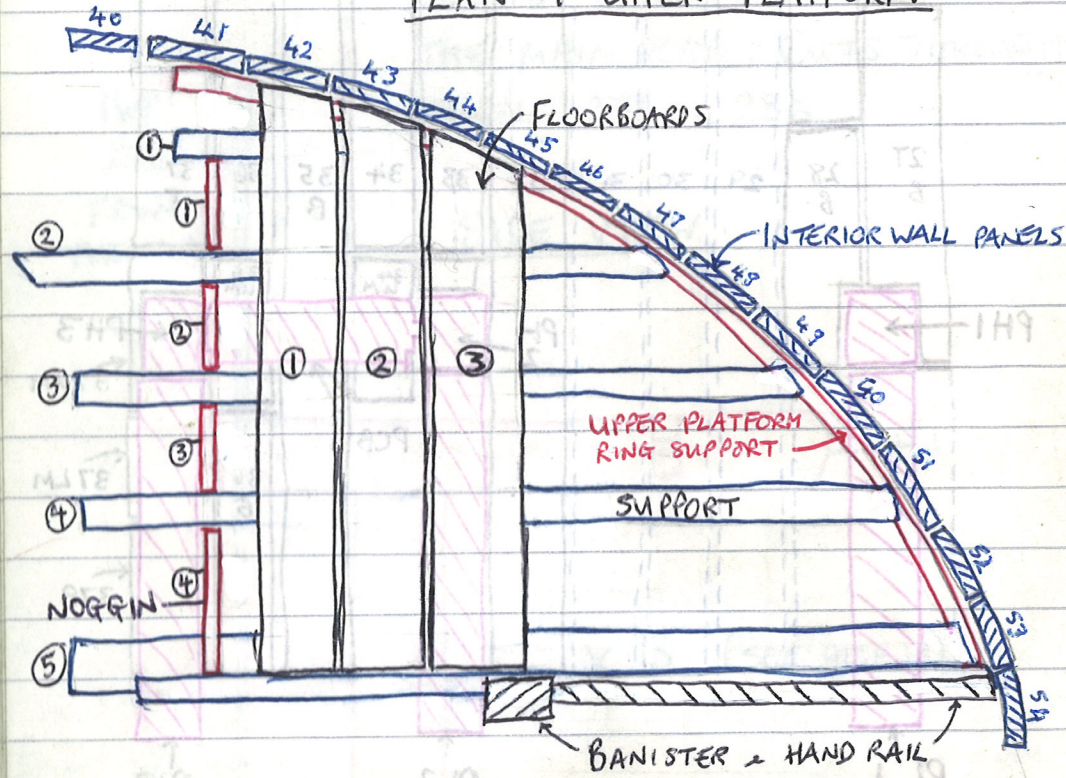


SECTION THROUGH THE GROUP OF POSTS FORMING THE LOWER PLATFORM. THERE ARE 2 PLATFORM CROSS BEAMS, ONE DIRECTLY BEHIND THE OTHER, BETWEEN PLATFORM HORIZONTALS 2 & 3.

IWP'S 29, 30, 31 ARE ALL MISSING & WILL NEED REPLACING.

See Photo: 5, 13, 14, 15, 16, 37

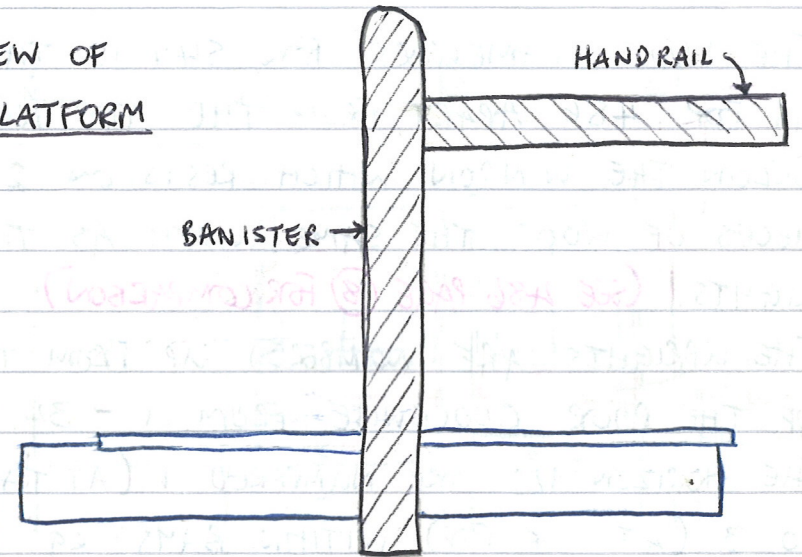
### PLAN OF UPPER PLATFORM



PLATFORM SET INTO THE WALL WITH NO SUPPORT DOWN TO THE GROUND. BARREL 'A' SITS UNDER THIS.

See photos: 14, 15, 38

### SIDE VIEW OF UPPER PLATFORM



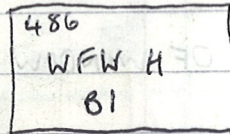
THE HAND RAIL RESTS ON THE SILL OF WINDOW 8 IN THE BOTTOM RIGHT CORNER.

See photos: 14, 17, 38

THE TOP NOSE OF THE WINDOW FORMS THE WINDOW SILL & HAVE NOT BEEN NUMBERED.

THE WALL FRAMEWORK FOR S44 IS THE SAME AS FOR 486 APART FROM THE TOP NOGGIN BELOW THE WINDOW WHICH RESTS ON 2 SMALL PIECES OF WOOD THE SAME WIDTH AS THE UPRIGHTS. (SEE 486 PAGE 18 FOR COMPARISON)

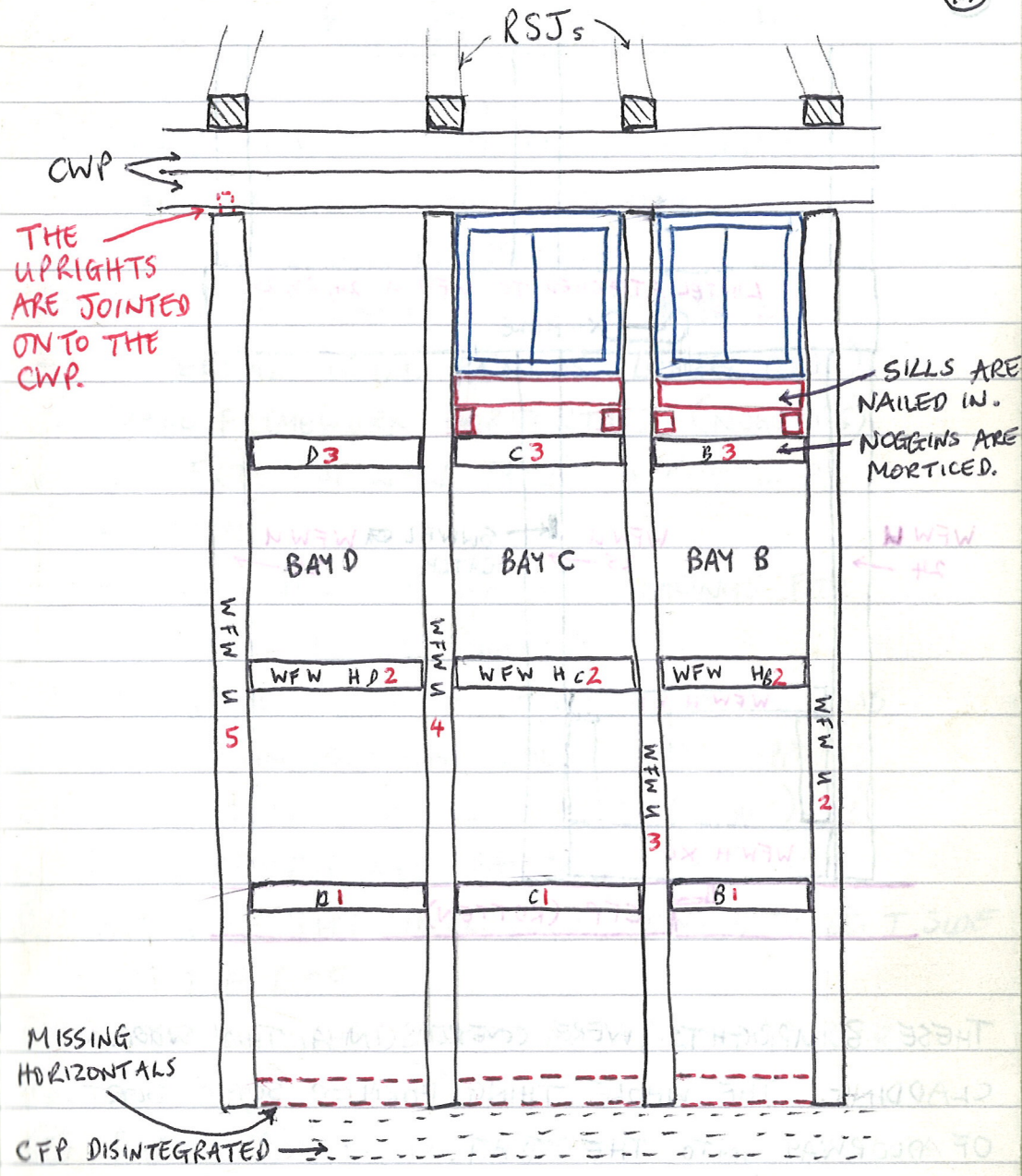
THE UPRIGHTS ARE NUMBERED UP FROM THE EDGE OF THE DOOR CLOCKWISE FROM 1 - 34. THE HORIZONTALS ARE NUMBERED 1 (AT THE BOTTOM) TO 3 (AT THE TOP) WITHIN BAYS eg:



THERE WOULD HAVE BEEN A HORIZONTAL AT THE VERY BOTTOM BUT THEY HAVE ALL ROTTED AWAY. THE CIRCULAR FLOOR PLATE HAS ALSO ROTTED AWAY. SOME/MOST OF THE UPRIGHTS WERE NOT RESTING ON ANYTHING & WERE HELD UP BY THE HORIZONTALS. ALL THE UPRIGHTS ARE ROTTEN AT THE BOTTOM & WILL NEED REPLACING.

UPRIGHT 34 IS A SHORT ONE BECAUSE IT RESTS ON THE TOP OF THE DOORFRAME (IN THE CENTRE). EACH UPRIGHT HAS A CORRESPONDING RSJ DIRECTLY ABOVE IT. (SEE 486 PAGE 26).

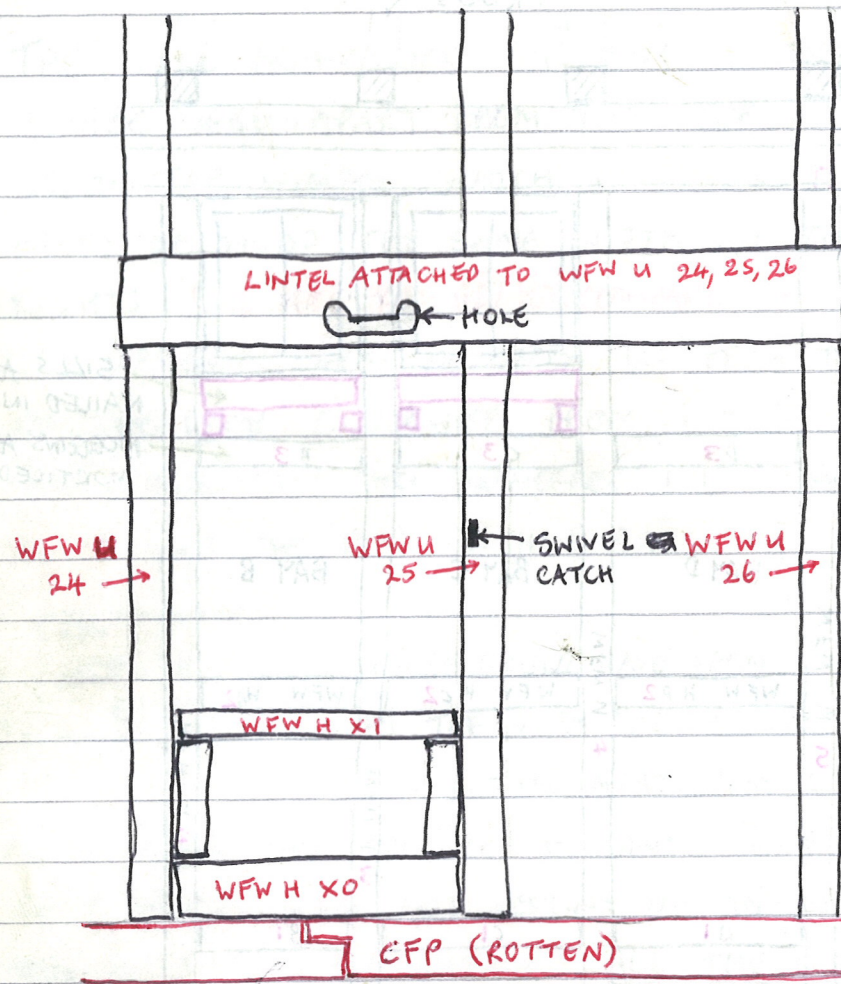
THE TOP NOGGIN BELOW THE WINDOW FORMS THE WINDOW SILL & HAVE NOT BEEN NUMBERED.



ELEVATION OF FRAMEWORK IN S44.

See Photo: 11, 67

18



THESE 3 UPRIGHTS WERE COVERED IN A THIN WOODEN CLADDING. THE WHOLE THING FORMED SOME SORT OF DOORWAY INTO THE JHT.

See photo: 18, 66

19

## PALLETS FOR 544

- ① ALL LONG ROOF BOARDS AND THE THIN STRIPS OF WOOD THAT HELD THE TIN TO THE ROOF.
- ② ALL SHORT ROOF BOARDS
- ③ ALL RSTJ: (ROOF SUPPORT JOISTS)
- ④ INTERNAL WALL PANELS (LONGER ONES)
- ⑤ WALL FRAMEWORK HORIZONTALS (NOGGINS)
- ⑥ ALL EXTERNAL WALL PANELS + EXT. W.P.
- ⑦ WINDOWS
- ⑧ WINDOW SILLS + BEADINGS & FACINGS FOR WINDOW FRAMES
- ⑨ LOWER & UPPER STRUTS BETWEEN RSTJs, PLUS, SITTING ON TOP, SOME ROOF BOARD SUPPORTS
- ⑩ INTERNAL WALL PANELS (SHORTER ONES)
- ⑪ DOORS / DOORFRAMES / PARTS OF JHT
- ⑫ PARTS OF JHT INCLUDING COMPLETE LEFT SIDE OF THE ROOF
- ⑬ UPPER & LOWER PLATFORMS FROM INTERIOR
- ⑭ BARREL (A) (POOR)
- ⑮ BARREL (B) (GOOD CONDITION) CONTAINS LIGHT FITTINGS, LID FROM ROOF
- ⑯ CIRCULAR WALL PLATE + 3 ESBs.
- ⑰ WALL FRAMEWORK UPRIGHTS

(20)



SIDE ON VIEW OF WFW UPRIGHT  
SHOWING MORTICE HOLES & WINDOW  
SILL WEDGE.

SMALL WEDGE THAT  
WINDOW SILLS SIT ON.

MORTICE  
HOLE

ORIGINALLY THE BASE WOULD HAVE  
BEEN JOINTED ONTO THE CIRCULAR  
FLOOR PLATE BUT NOW ALMOST  
ALL THE UPRIGHTS HAVE ROTTED  
AWAY AT THE BOTTOM.

(21)

UN-NUMBERED ITEMS IN 544

- ① ROOF BOARDS ARE NOT INDIVIDUALLY NUMBERED. THE LONG ONES ARE ON PALLET ① AND THE SHORT ONES ARE ON PALLET ②.
- ② ROOF BOARD SUPPORTS (SEE 486 PAGE 17 FOR DESCRIPTION). ALL TOGETHER ON PALLET ⑨.
- ③ WINDOW SILLS + BEADING & FACING AROUND WINDOWS. THERE ARE 20 SILLS ALL THE SAME SIZE. THESE ARE ALL ON PALLET ⑧. INTERNAL BEADING IS CREAM COLOURED. EXTERNAL IS GREY & RED.
- ④ EXTERNAL WALL PLATES (34 OF THEM) SIT DIRECTLY BELOW THE ROOF BOARDS (SEE 486 PAGES 17 & 18). THEY ARE FACING BOARDS USED TO SECURE THE TOP EXTERNAL WALL PLATES. THEY WERE OMITTED FROM THE NUMBERING SEQUENCE & CAN BE FOUND WITH THE EXTERNAL WALL PANELS ON PALLET ⑥ See photo 6

(22)

### ITEMS NEEDING REPLACEMENT.

- ① ALL OF CIRCULAR FLOOR PLATE WHICH HAS MORE OR LESS ALL DISINTEGRATED.
- ② WALL FRAMEWORK UPRIGHTS WILL EITHER NEED REPLACING OR REPAIRING. THE BASE OF ALL EXCEPT 3 HAVE DISINTEGRATED. WFWU 9 HAS GONE ALTOGETHER, 8 & 10 ARE VERY ROTTEN.
- ③ THE COVERING TO THE NITRATING TUNNEL, WHICH PRESUMABLY WOULD HAVE LOOKED THE SAME AS THE COVERING TO THE JUNCTION HOUSE TUNNEL, HAS COMPLETELY DISAPPEARED.
- ④ THE ENTRY CANOPY ACROSS THE MAIN TUNNEL HAS DISAPPEARED.
- ⑤ ALL THE EWPs ON THE JHT LEFT SIDE
- ⑥ INTERIOR WALL PANELS WHERE THE PLATFORMS CUT THROUGH (SEE PAGE 13). IWPs 29, 30, 31 HAD ALL DISAPPEARED. 27 C & 28 C HAD ALSO GONE. THE REST WERE IN FAIRLY GOOD CONDITION.

(23)

- ⑦ EXTERNAL WALL PANELS CLOSE TO THE FLOOR ARE ROTTEN, SOME DISINTEGRATED. EWPs HAD COMPLETELY GONE FROM BAY H & MOST HAD GONE FROM BAY G. FAIRLY EXTENSIVE REPLACEMENT WILL BE NECESSARY.
- ⑧ ONLY ONE EXTERNAL SUPPORT BEAM REMAINS OUT OF 16
- ⑨ NO WALKWAY FLOORING REMAINS (IF THERE EVER WAS ANY) UNLIKE IN 4866 (SEE PAGE 9)



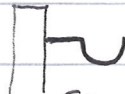
(24)

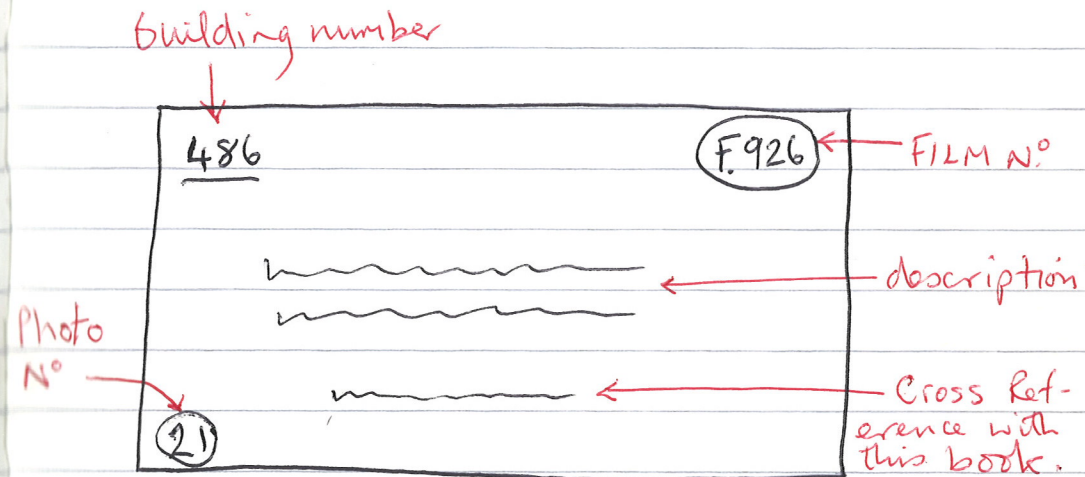
THE CIRCULAR WALL PLATE IS BUILT IN THE SAME WAY AS FOR 486. ROMAN NUMERALS ARE SCRATCHED INTO THE WOOD AT EACH JOINT ON THE LOWER RING. THE UPPER RING HAS A CORRESPONDING LABEL WITH ROMAN NUMERALS WRITTEN ON IT. (SEE 486 PAGE 18) THE NUMBERS START AT I & GO CLOCKWISE ROUND TO XIII

THE RSJs ARE FIXED TO THE WFW Us IN THE SAME WAY AS FOR 486 (SEE 486 PAGE 26)

(25)

THERE ARE ONLY 4 DRAINPIPES IN THE REVETMENT WALL (AS OPPOSED TO 8 IN 486) THE MAIN DRAIN WAS IN FRONT OF THE JHT.

6 IRON HOOKS  STICK OUT OF THE REV. WALL APPROX. 20cms FROM THE TOP. THEY ARE EVENLY SPACED BUT THERE SEEMS TO BE 1 MISSING FROM ABOVE THE MAIN ENTRANCE TUNNEL.



Photos are labelled as above.

Numbers begin at (1) & end at (77)

BUILDING 486

NITRO-GLYCERINE MIXING  
HOUSE. DISMANTLING

REF. P779

# BUILDING 486

## NITRO-GLYCERINE MIXING HOUSE

### ABBREVIATIONS CONTINUED ON PAGE 22.

BIWP = BOTTOM INTERNAL WALL PANEL

EWP = EXTERNAL WALL PANEL

WIN = WINDOW

DF = DOOR FRAME

↑<sub>T</sub> = TOP THIS WAY UP

EXT WP = EXTERNAL WALL PLATE

ESB = EXTERNAL SUPPORT BEAMS

STA = SMALL TUNNEL ACCESS

WIN LL = WINDOW LOWER LINTEL

WIN UL = WINDOW UPPER LINTEL

ESB = EXTERNAL SUPPORT BEAM

FB = FLOOR BOARD

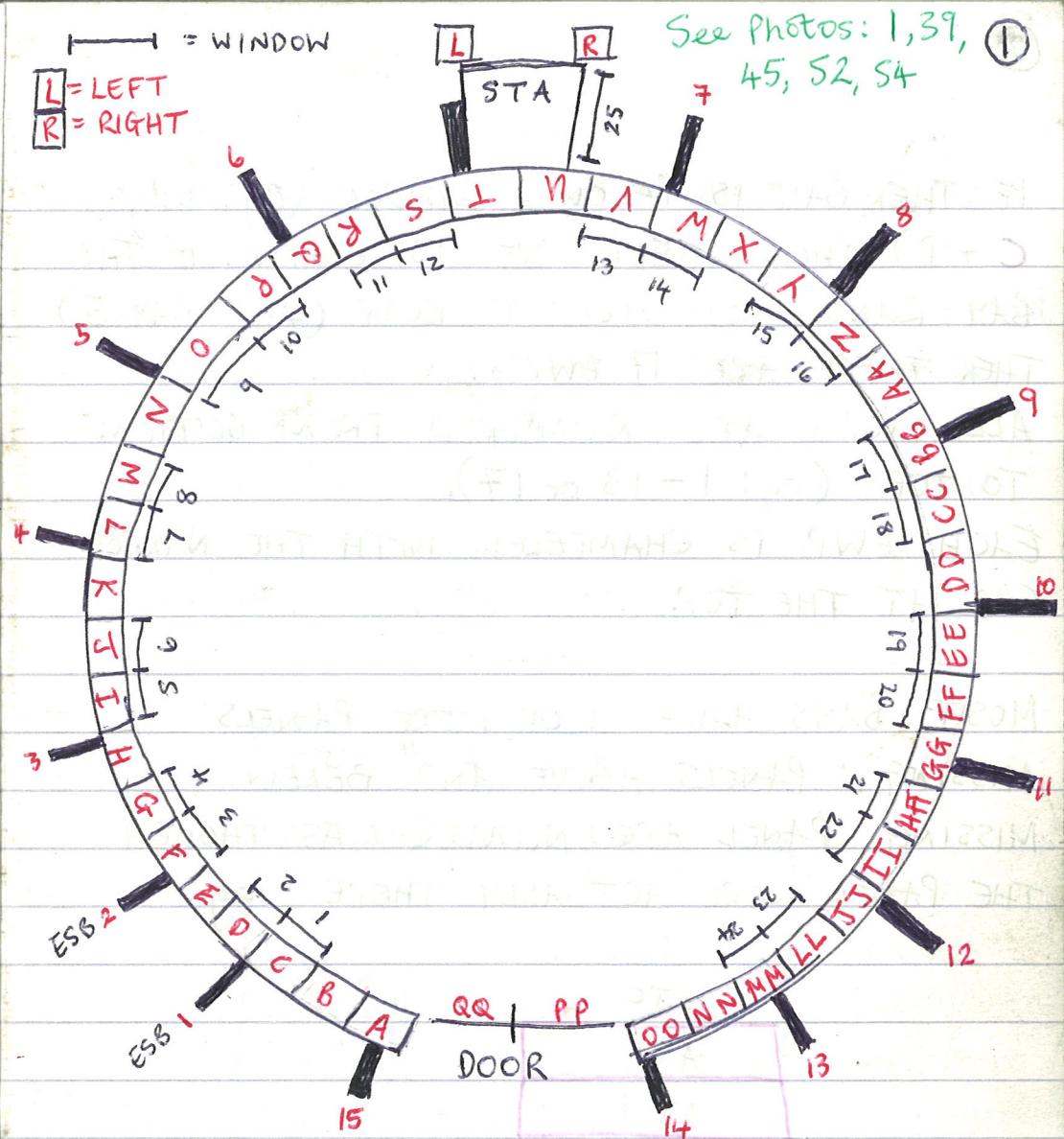
INT. WP = INTERNAL WALL PLATE

DR = DOOR

WF = WALKWAY FLOORING

IWP = INTERNAL WALL PANEL

RBS = ROOF BOARD SUPPORT



PLAN SHOWING LAYOUT OF EXTERNAL WALL PANEL BAYS, AND LOCATION OF WINDOWS; EXTERNAL SUPPORT BEAMS; SMALL TUNNEL ACCESS.

EACH BAY HAS A LETTER AND CONSISTS OF EITHER 13 OR 17 EXTERNAL WALL PANELS — EWP'S.

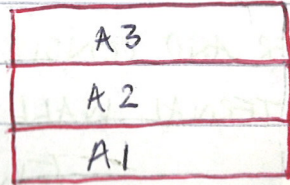
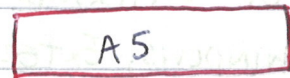
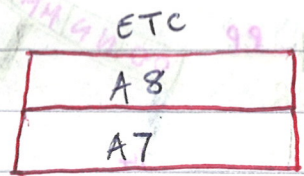
②

IF THE BAY IS BELOW A WINDOW (eg: BAYS C + D) THEN THERE ARE 13 EWP'S. IF THE BAY RUNS FROM FLOOR TO ROOF (eg: BAY E) THEN THERE ARE 17 EWP'S.

ALL EWP'S ARE NUMBERED FROM BOTTOM TO TOP (eg: 1-13 or 17).

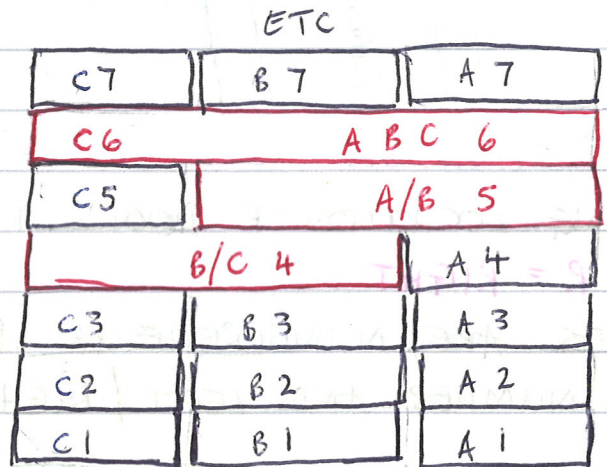
EACH EWP IS CHAMFERED WITH THE NARROW END AT THE TOP.

MOST BAYS HAVE 1 OR MORE PANELS MISSING. PANELS ABOVE AND BELOW A MISSING PANEL ARE NUMBERED AS THOUGH THE PANEL WERE ACTUALLY THERE. eg:

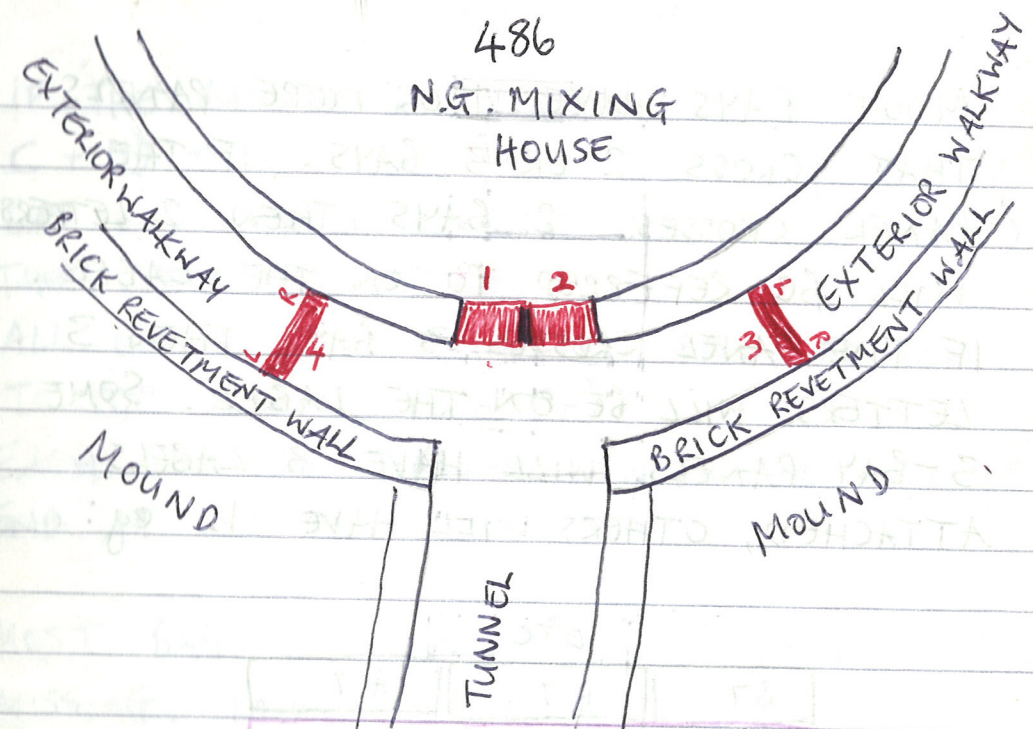


③

MOST BAYS HAVE 1 OR MORE PANELS THAT CROSS 2 OR 3 BAYS. IF THE PANEL CROSSES 2 BAYS THEN 2 LETTERS WILL BE REFERRED TO ON THE LABEL. IF THE PANEL CROSSES 3 BAYS THEN 3 LETTERS WILL BE ON THE LABEL. SOME 3-BAY PANELS WILL HAVE 3 LABELS ATTACHED, OTHERS WILL HAVE 1. eg:



SOME PANELS HAVE FALLEN OFF BUT CAN BE SAID TO BELONG TO A PARTICULAR BAY. THESE HAVE BEEN LETTERED BUT NOT NUMBERED.



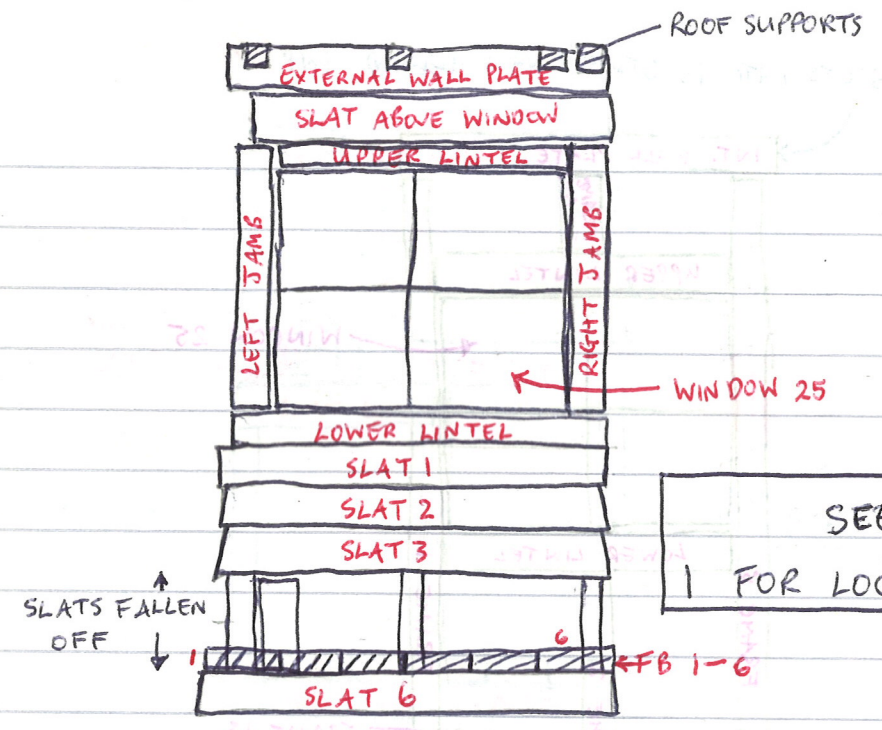
See Photos: 35, 51, 64  
PLAN SHOWING LOCATION OF DOORS 1-4.

L = LEFT R = RIGHT.

DOOR FRAMES ARE ANNOTATED - DF WITH DOOR NUMBER AND LEFT / RIGHT / OR TOP.

eg:

|               |
|---------------|
| 486           |
| DF FOR DOOR 4 |
| LEFT          |

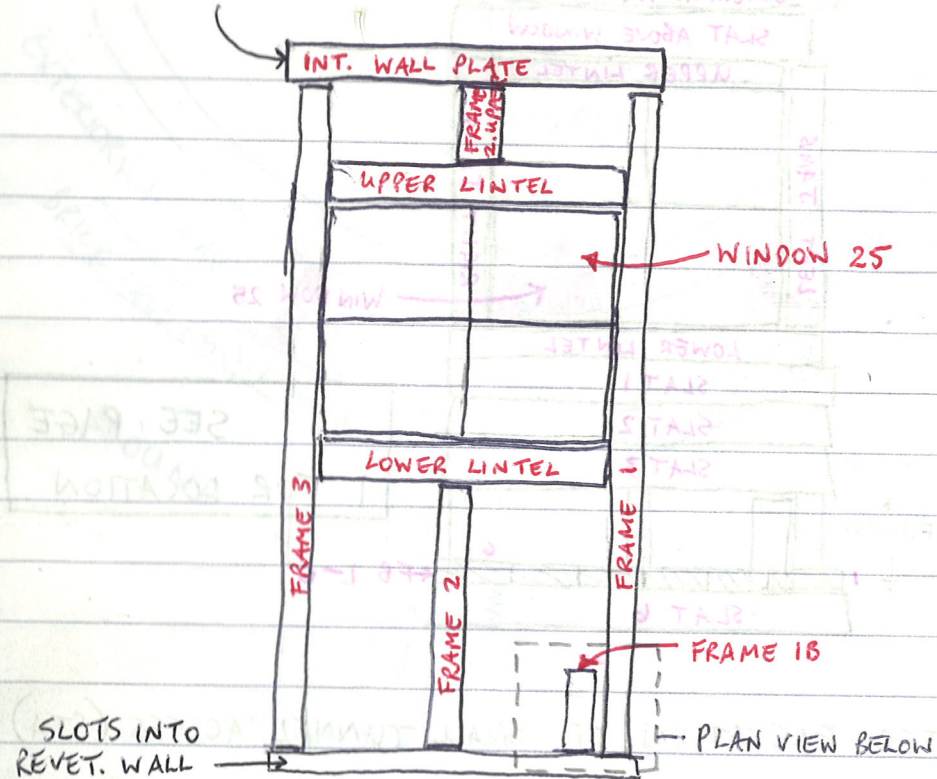


OUTER ELEVATION OF SMALL TUNNEL ACCESS (STA) - RIGHT SIDE.

SLAT 6 COVERS UPPER & LOWER FLOOR SUPPORTS

See Photos: 3

BEAM SLOTS INTO REVETMENT WALL BEHIND IWP



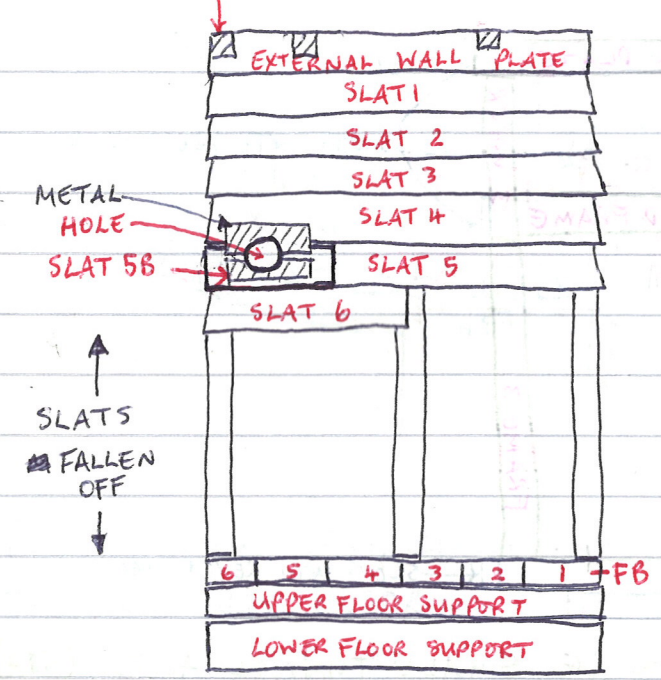
INNER ELEVATION OF SMALL TUNNEL ACCESS (STA) RIGHT SIDE.

See Photo: 43



PLAN VIEW

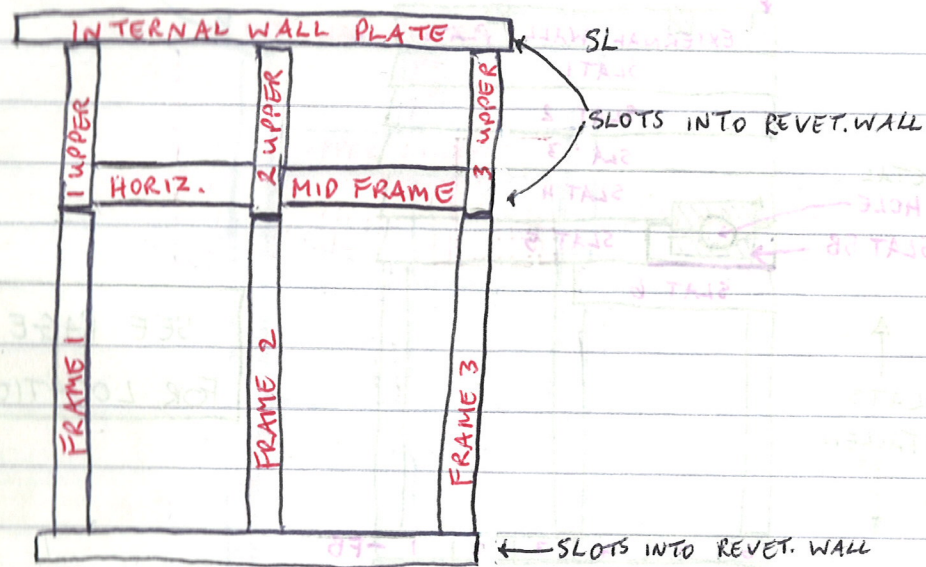
ROOF SUPPORT



OUTER ELEVATION OF SMALL TUNNEL ACCESS (STA) LEFT SIDE.

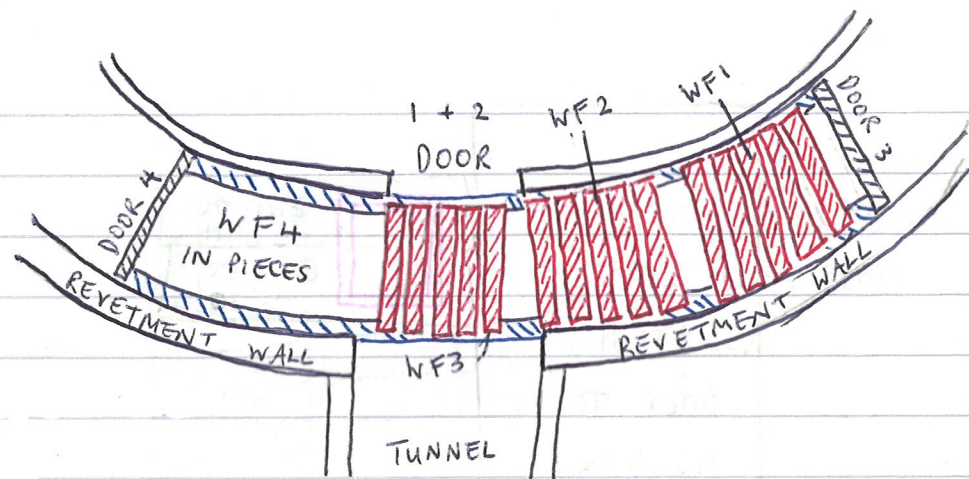
See Photo: 4

8



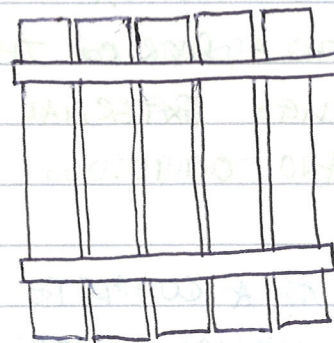
INNER ELEVATION OF SMALL TUNNEL ACCESS (STA) LEFT SIDE.

9



PLAN SHOWING POSITION OF WALKWAY FLOORING (WF)  
 THE WALKWAY FLOORING CONSISTS OF 4 SEPARATE SETS OF PLANKING HELD TOGETHER BY 2 SMALLER PIECES OF WOOD UNDERNEATH

eg:

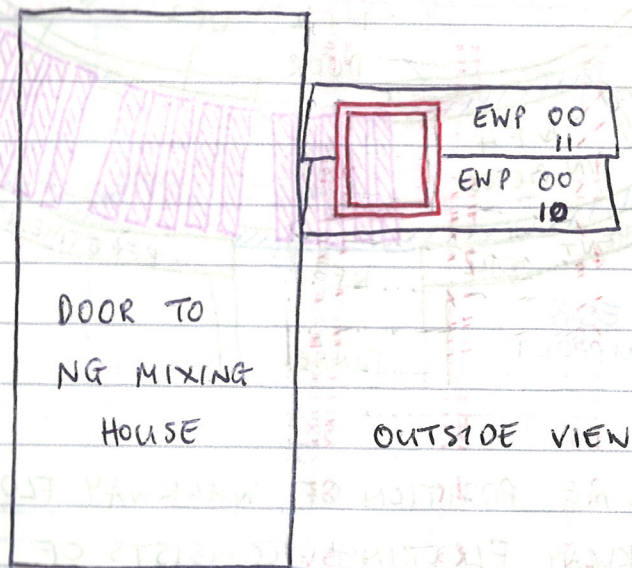


THE 4TH SET HAS BEEN BROKEN UP IN THE PAST. THE INDIVIDUAL PIECES HAVE BEEN LABELLED 486 WF.

THE PLANKING RESTS ON A WOODEN SHELF RUNNING ROUND THE OUTSIDE OF THE NG MIXING HOUSE & THE INSIDE OF THE REVEYMENT WALL (BLUE INK).  
 WF1, 2, 3 FIT TOGETHER TO MAKE A WALKWAY WITH NO GAPS.

10

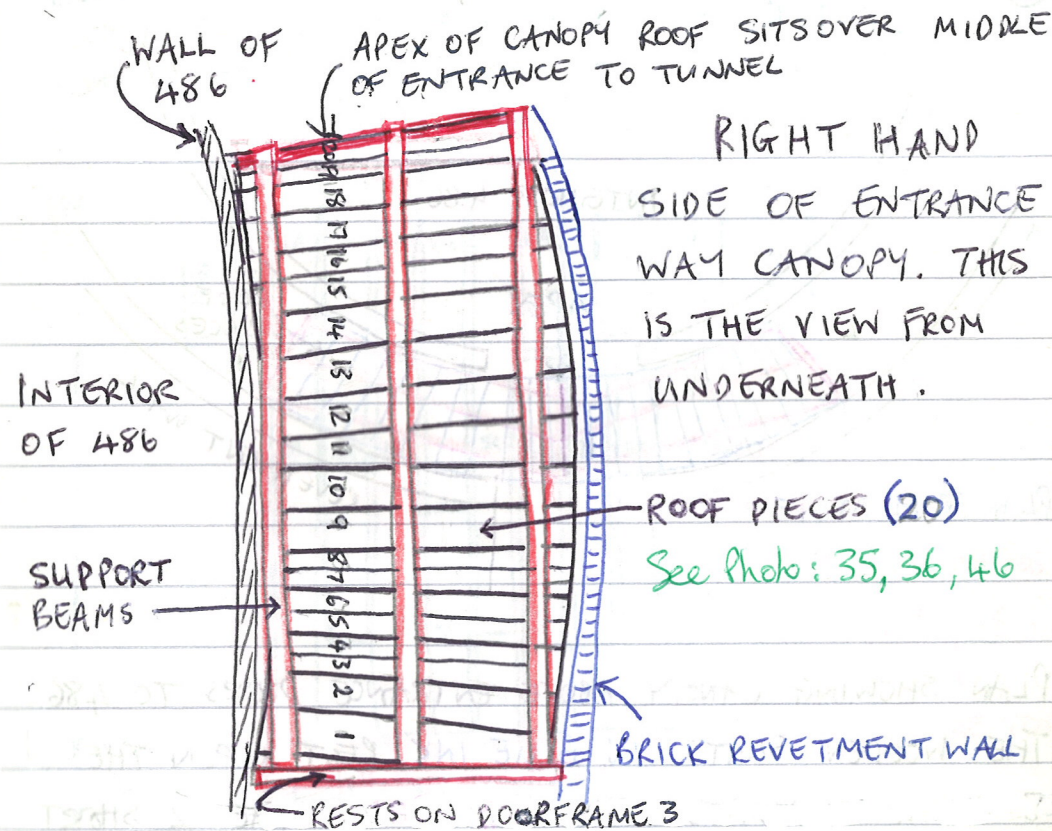
See photo 40, 44



ELEVATION SHOWING LOCATION OF PEEPHOLE INTO MIXING HOUSE. THIS CONSISTS OF A GLASS WINDOW IN A FRAME WITH A DOOR ON THE OUTSIDE. THE FRAME CUTS THROUGH EXTERNAL WALL PANELS (EWP) 00 11 AND 00 10.

PEEPHOLE HAS COME OUT AS A COMPLETE BOX WHICH FITS INTO THE FRAMEWORK & SITS ON ONE OF THE WFW ~~WALL~~ HORIZONTAL

11



THE LEFT HAND CANOPY JOINED THIS IN THE MIDDLE BUT COLLAPSED ON REMOVAL OF THE FRAME TO DOOR 4. THE SLATS ARE VERY ROTTEN. LEFT HAND ROOF PIECES ARE NOT INDIVIDUALLY NUMBERED.

ROOF PIECES ARE NAILED ONTO THE 3 LONG SUPPORT BEAMS.

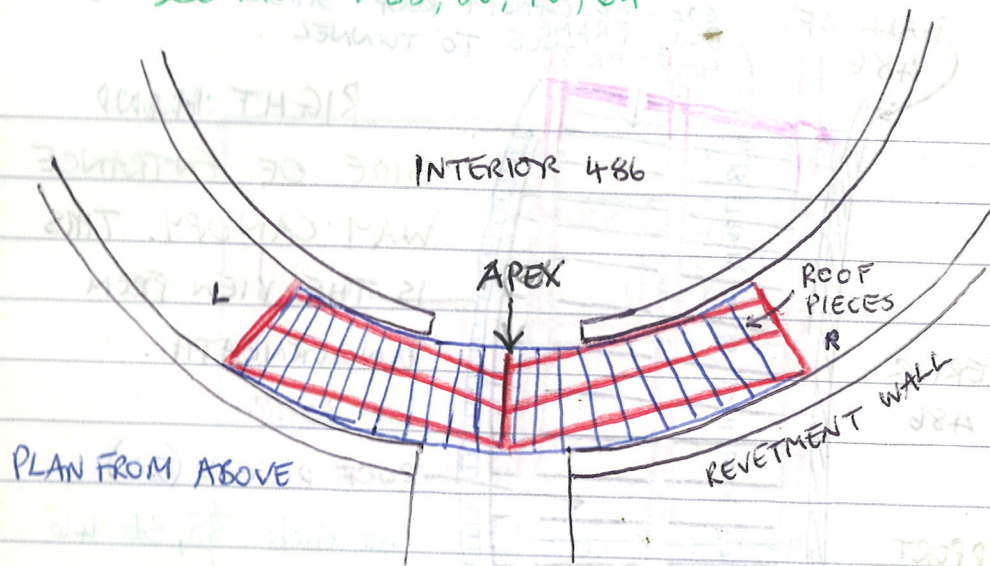
RIGHT HAND BOARDS WERE NUMBERED UP BUT MOST OF THEM DISINTEGRATED ON REMOVAL. THE BEST ONES ARE STILL ATTACHED TO THE BEAMS.

(COVERED BY THE WALKWAY FLOORING (SEE PAGE 4))

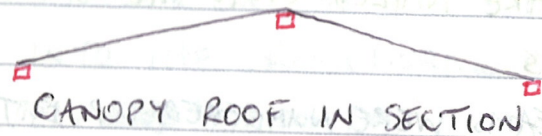


12

See Photos: 35, 36, 46, 64

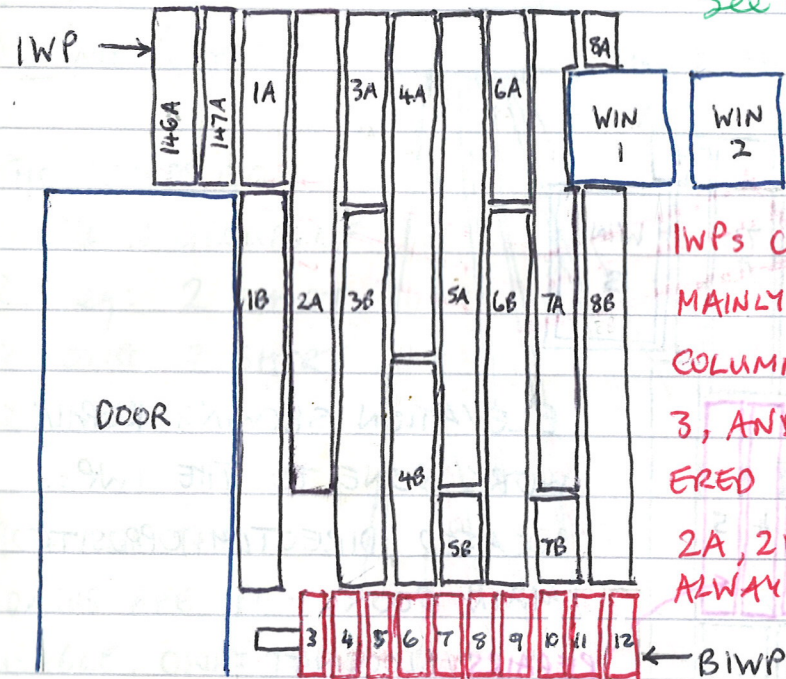


PLAN SHOWING CANOPY ABOVE ENTRANCE DOORS TO 486. THE WOODEN SLATS IN BLUE INK REST UPON THE 3 LONG SUPPORTS SHOWN IN RED. THE 2 SHORT SUPPORTS SHOWN IN RED REST ON THE DOOR LINTELS OF DOORS 4 & 3. THE SLATS ARE VERY ROTTEN & WILL NEED REPLACING. THE SHORT RED SUPPORT FORMS THE JOIN FOR THE 2 HALVES & IS THE APEX OF THE CANOPY.



THE CANOPY ROOF IS DIRECTLY ABOVE THE AREA COVERED BY THE WALKWAY FLOORING (SEE PAGE 9)

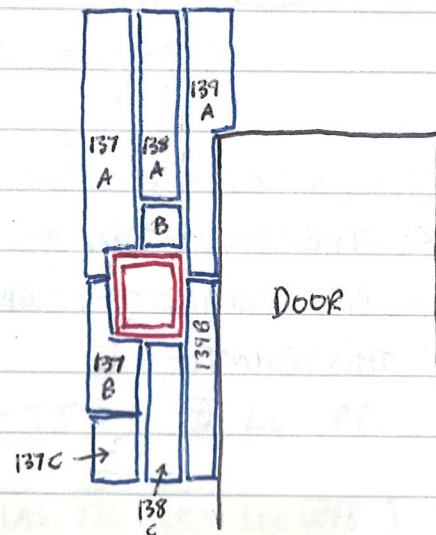
13  
ELEVATION OF INTERNAL WALL PANELS (IWPs) AND BOTTOM INTERNAL WALL PANELS (BIWPs)  
BOTH SETS START AT THE DOOR & GO CLOCKWISE  
IWPs GO FROM 1-147. See Photo: 39, 41



IWPs CONSIST OF MAINLY 2 PANELS IN A COLUMN, OCCASIONALLY 3, AND ARE NUMBERED eg: 1A, 1B, 1C 2A, 2B, 2C. A IS ALWAYS AT THE TOP

(1 & 2 ARE MISSING) AND GO ROUND TO 228.

See Photo: 40

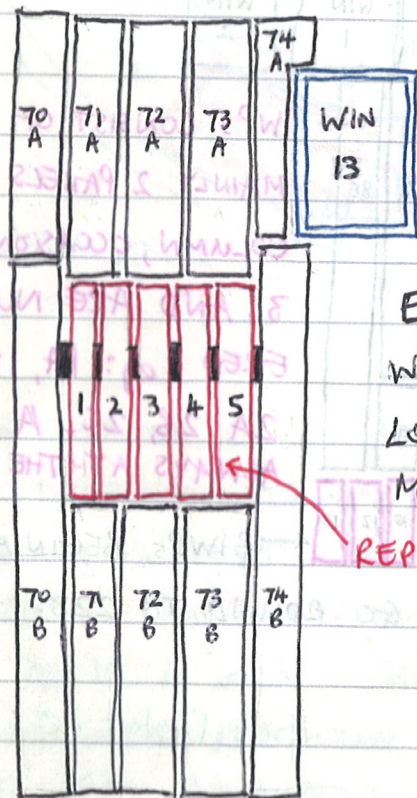


LOCATION OF PEEPHOLE FROM THE INSIDE OF 486

(14)

IWPs ARE NAILED TO THE WFW.

See Photo: 39



ELEVATION SHOWING REPAIR WORK DONE TO THE IWPs. LOCATED DIRECTLY OPPOSITE MAIN DOOR.

REPAIRS/BLOCKING

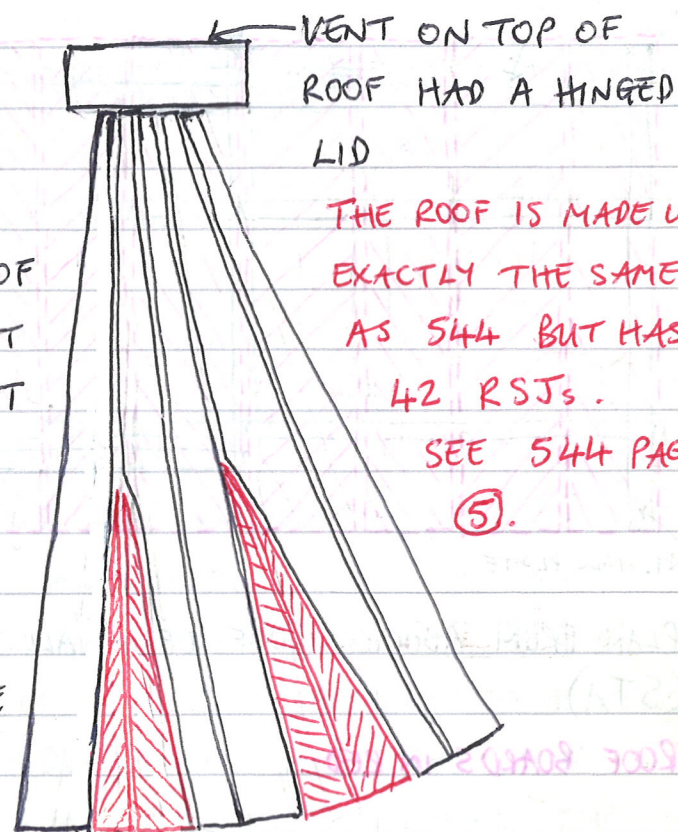
THIS SECTION OF IWPs COVERS THE SMALL TUNNEL ACCESS. THERE COULD HAVE BEEN A PIPE COMING THROUGH THE WALL FROM THE STA AT THIS POINT.

(15)

SEE 544 PAGE 6 FOR INSIDE DIAGRAM

See Photo: 42, 47

EXAMPLE OF ROOFING BOARDS.



THE BOARDS GO ROUND IN GROUPS OF 2. eg: 2 SHORT 2 LONG, 2 SHORT 2 LONG.

90% OF THE BOARDS ARE RE-USABLE. ONLY THE ONES OVER BAYS MM-PP HAVE WATER DAMAGE.

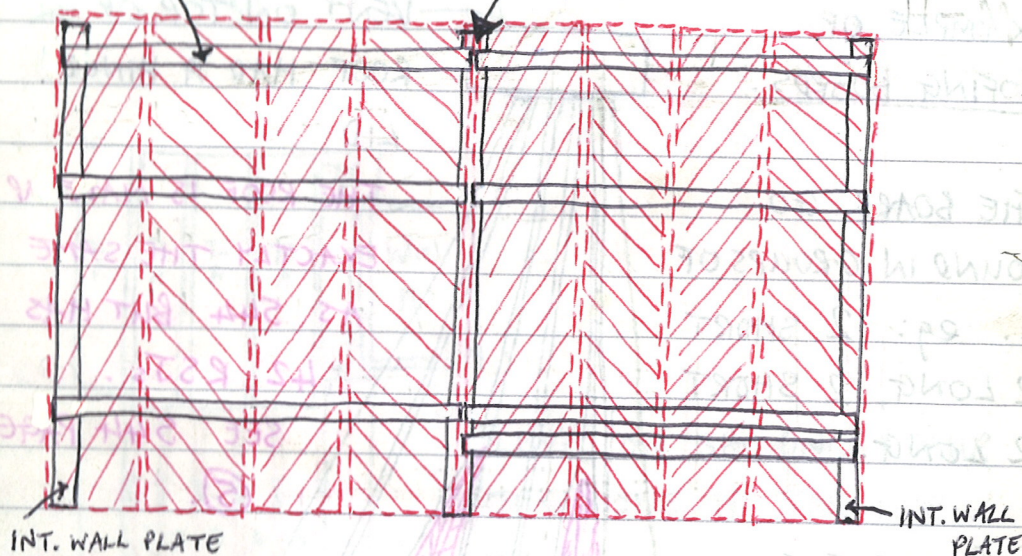
BOARDS WERE NOT INDIVIDUALLY NUMBERED WHEN THE ROOF WAS DISMANTLED. THEY WERE TAKEN OFF IN BATCHES CORRESPONDING TO WALL BAYS: -

- ① B-H    ② H-M    ③ N-R    ④ S-Z    ⑤ AA-EE
- ⑥ FF-JJ    ⑦ LL-PP    ⑧ QQ-A.

486 HAS NO SKY LIGHTS.

16

ROOF SUPPORTS (RAFTERS), RIDGE & RIDGE CAP

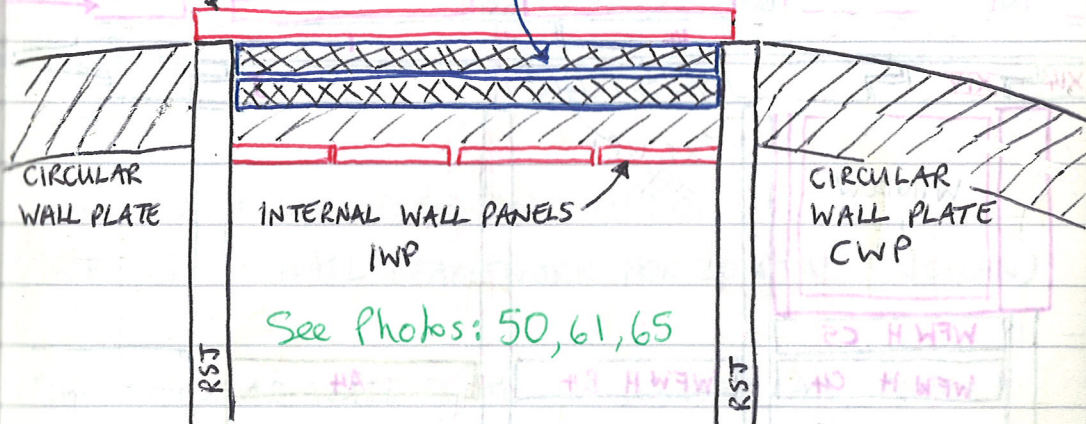


PLAN FROM ABOVE. ROOF OF SMALL TUNNEL ACCESS (STA).

ROOF BOARDS IN RED

17

EXTERNAL WALL PLATE EXT. W.P. ROOF BOARD SUPPORTS (RBS) CHAMFERED TOWARDS THE OUTSIDE & NAILED ON.

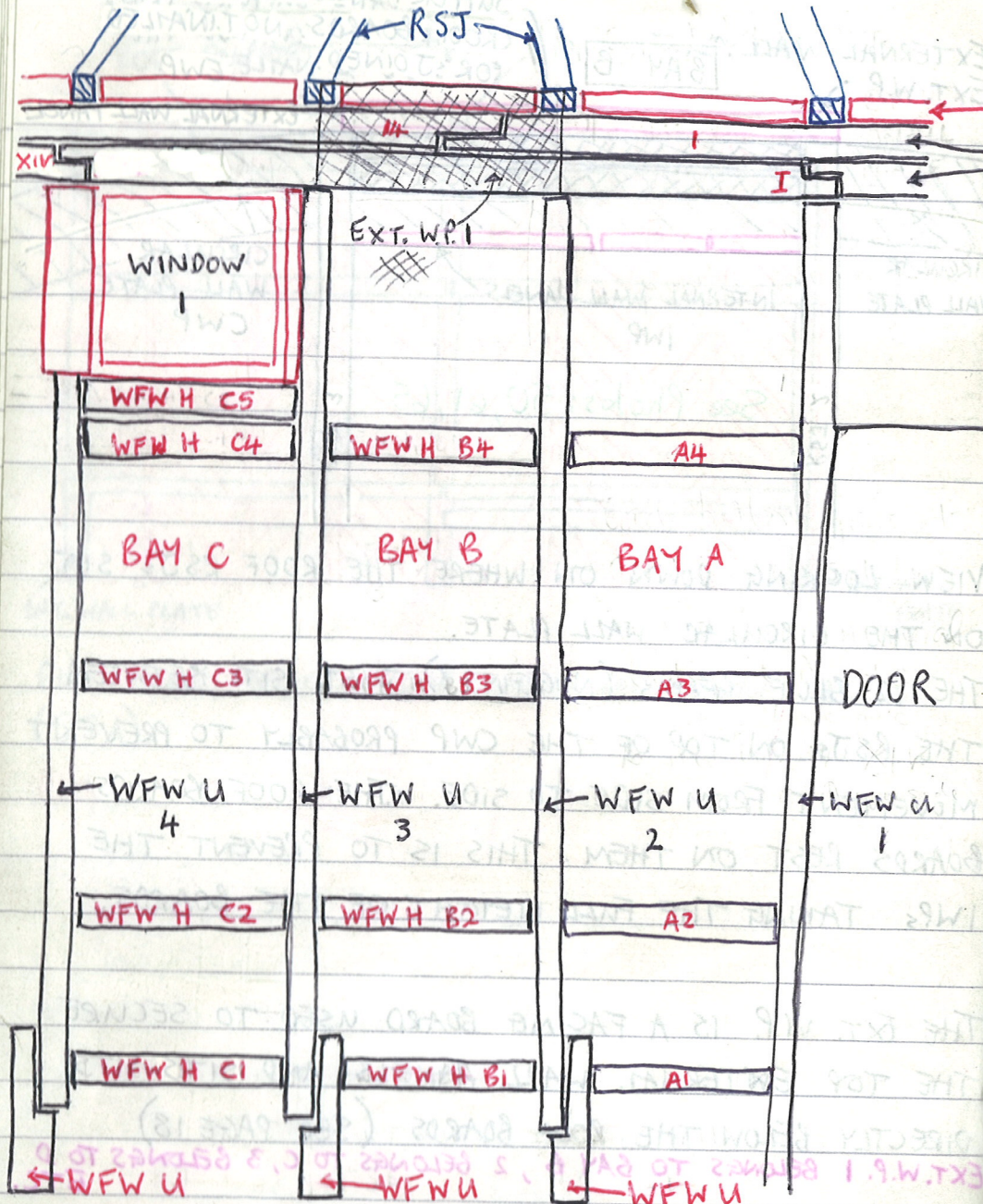


VIEW LOOKING DOWN ON WHERE THE ROOF RSJS SIT ON THE CIRCULAR WALL PLATE.

THE 2 BLUE BEAMS (NOGGINS?) JUST SIT BETWEEN THE RSJS ON TOP OF THE CWP PROBABLY TO PREVENT MOVEMENT FROM SIDE TO SIDE. ALSO THE ROOF BOARDS REST ON THEM. THIS IS TO PREVENT THE IWPs TAKING THE FULL WEIGHT OF THE BOARDS.

THE EXT. W.P. IS A FACING BOARD USED TO SECURE THE TOP EXTERNAL WALL PANELS AND IT SITS DIRECTLY BELOW THE ROOF BOARDS (SEE PAGE 18) EXT. W.P. 1 BELONGS TO BAY B, 2 BELONGS TO C, 3 BELONGS TO D ETC.

THE ROOF BOARD SUPPORT RESTS ARE NOT INDIVIDUALLY NUMBERED.



ELEVATION OF OUTSIDE VIEW OF FRAMEWORK

486  
CWP T  
1

EXAMPLE OF LABELLING  
FOR CWP TOP

SUPPORT RESTS FOR ROOF BOARDS

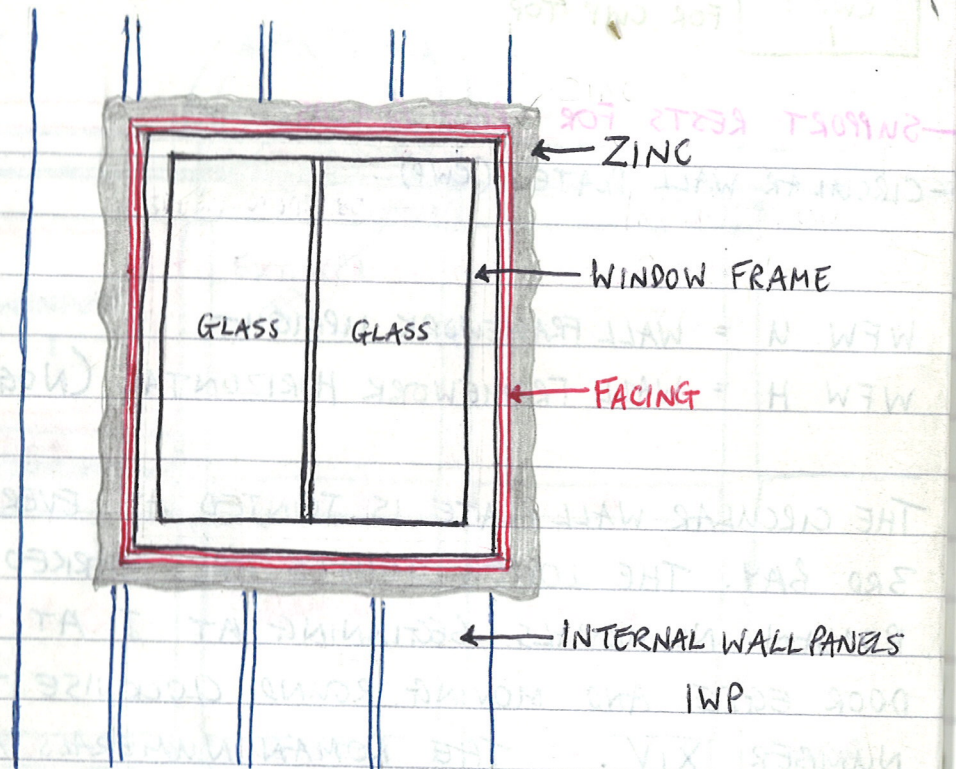
CIRCULAR WALL PLATE (CWP)

WFW U = WALL FRAMEWORK UPRIGHT

WFW H = WALL FRAMEWORK HORIZONTAL (NOGGIN)

THE CIRCULAR WALL PLATE IS JOINTED AT EVERY 3RD BAY. THE LOWER JOINTS ARE MARKED BY ROMAN NUMERALS BEGINNING AT I AT THE DOOR EDGE AND MOVING ROUND CLOCKWISE TO NUMBER XIV. THE ROMAN NUMERALS ARE SCRATCHED ONTO THE CWP ON THE INSIDE OF THE BUILDING. THE TOP CWP IS LABELLED UP 1-14. (INSIDE) WHERE THERE IS A WINDOW THERE IS A 5TH NOGGIN. THE FRAMEWORK IS DIVIDED INTO THE SAME BAYS AS USED FOR THE EWPs, A - 00. THE UPRIGHTS BEGIN AT 1 AT THE DOOR EDGE AND MOVE ROUND TO 42, CLOCKWISE. THE HORIZONTALS (NOGGINS) ARE MARKED WITH THE LETTER FOR THAT BAY AND A NUMBER FROM 1-5. 1 IS AT THE BOTTOM. 5 IS AT THE TOP BELOW A WINDOW.

(SEE PAGE 1 FOR LOCATION OF BAYS)



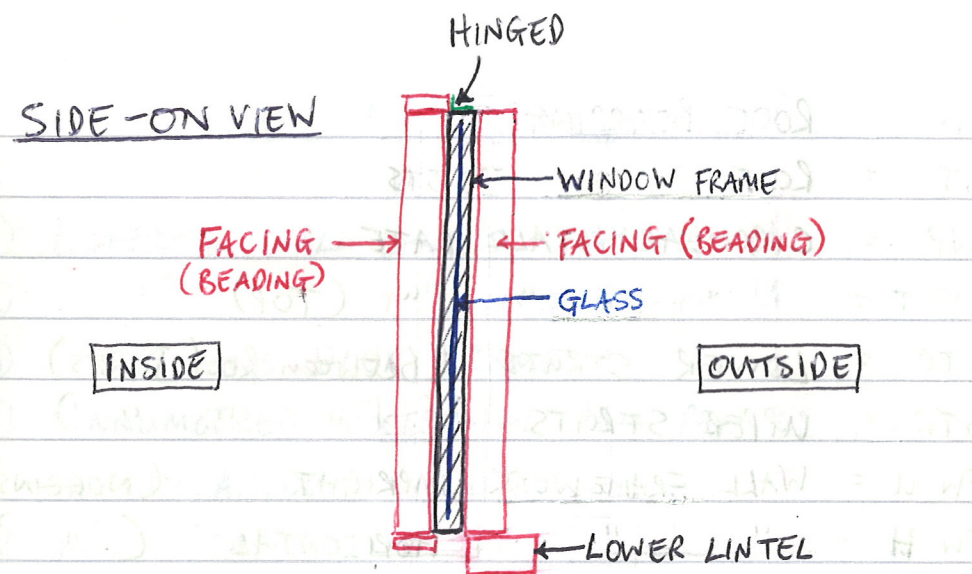
ELEVATION OF WINDOW FROM INSIDE

THE ZINC COVERING THE IWPs WAS TUCKED IN BETWEEN THE FACING AND THE EDGE OF THE IWPs.

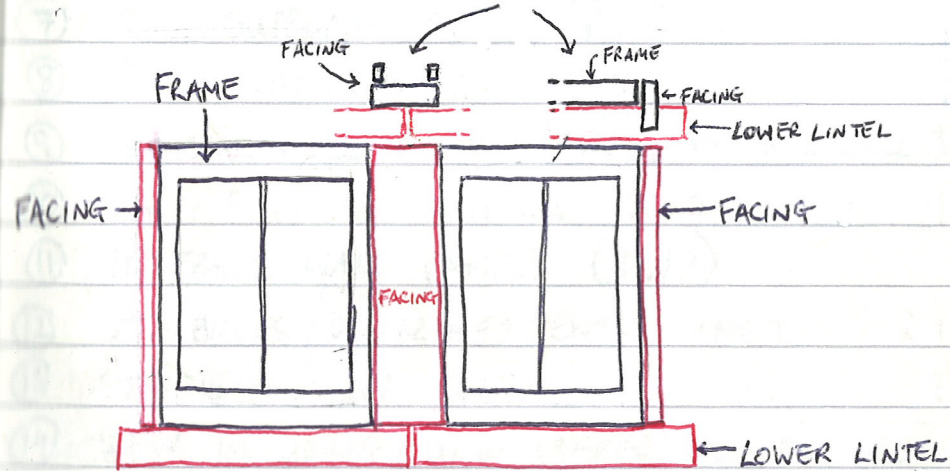
SOME WINDOWS ARE HINGED & SWING FROM THE TOP. OTHERS OPEN ON A CENTRAL PIVOT.

See Photo: 39, 55

(SEE PAGE 1 FOR LOCATION OF PANS)



VIEWS FROM ABOVE

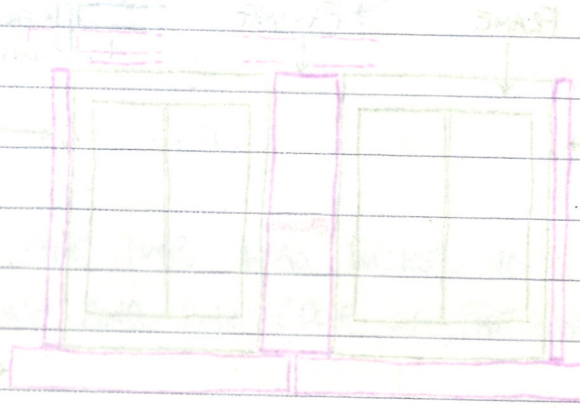


OUTSIDE VIEW

See Photo: 55

ABBREVIATIONS CONTINUED

- RB = ROOF BOARDING
- RST = ROOF SUPPORT JOISTS
- CWP = CIRCULAR WALL PLATE
- CWP T = " " " (TOP)
- LSTR = LOWER STRUTS (between roof joists)
- USTR = UPPER STRUTS ( " " " )
- WFW U = WALL FRAMEWORK UPRIGHT (NOGGIN)
- WFW H = " " HORIZONTAL ( " )
- CFP = CIRCULAR FLOOR PLATE



PALLETS FOR 486

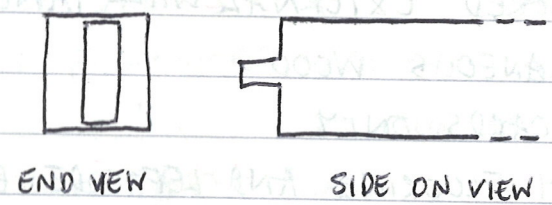
- 1 EXTERNAL WALL PANELS, BAYS A-H
- 2 " " " " H-U
- 3 DOORS AND DOOR FRAMES
- 4 UNNUMBERED EXTERNAL WALL PANELS AND MISCELLANEOUS WOOD
- 5 ROOF BOARDS ONLY
- 6 WALKWAY FLOORING AND LEFTSIDE ENTRY CANOPY
- 7 ROOF SUPPORT JOISTS (RST)
- 8 ROOF SUPPORT JOISTS (RST)
- 9 EXTERNAL WALL PANELS (EWP), EXTERNAL WALL PLATES (EWP)
- 10 BIRPS PLUS BEADING FOR WINDOWS.
- 11 INTERNAL WALL PANELS (IWP)
- 12 STA PIECES / DOORFRAMES / ENTRY CANOPY
- 13 STA PIECES / CWP PIECES
- 14 WFW INCLUDING UNNUMBERED SUPPORT RESTS FOR ROOF BOARDS (SEE PAGE 17). ~~(RBS)~~ (RBS)
- 15 WFW / ESB / CWP / STA / EWP (MOSTLY WFW)
- 16 WINDOWS + PEEP HOLE
- 17 WFW / CWP / CFP
- 18 WFW / CWP / CFP
- 19 USTR + LSTR (ROOF NOGGIN)



← MORTICED INTO CWP

SIDE ON VIEW OF WFW U SHOWING WHICH NOGGINS ARE JOINED & WHICH ARE NAILED IN.

1 & 5 ARE NAILED. 2, 3 & 4 ARE JOINED.



3

WFW H (NOGGIN)

MOST NOGGINS WILL NEED REPLACING.

MOST OF THE UPRIGHTS HAVE REPAIRS BUT ARE STILL VERY ROTTEN ESPECIALLY AT THE TOP & BOTTOM.

2

UPRIGHTS B ARE VERY ROTTEN.

NOGGINS 1 ARE VERY ROTTEN, AND ONLY SEEM TO HAVE BEEN ADDED IN ORDER TO SUPPORT THE BIWPs WHICH ARE IN THEMSELVES REPAIRS. (SEE PAGE 13 FOR BIWPs)

1

← UPRIGHT B

← REPAIR

← NAILED ONTO CFP

See Photos: S4, S7

MOST OF THE INTERIOR WALL PANELS ARE IN GOOD CONDITION & CAN BE REUSED.

THE EXTERIOR WALL PANELS ARE MOSTLY IN GOOD CONDITION EXCEPT THE ONES NEAREST THE BOTTOM.

MOST WALL FRAMEWORK UPRIGHTS (WFW U) WILL NEED REPLACING.

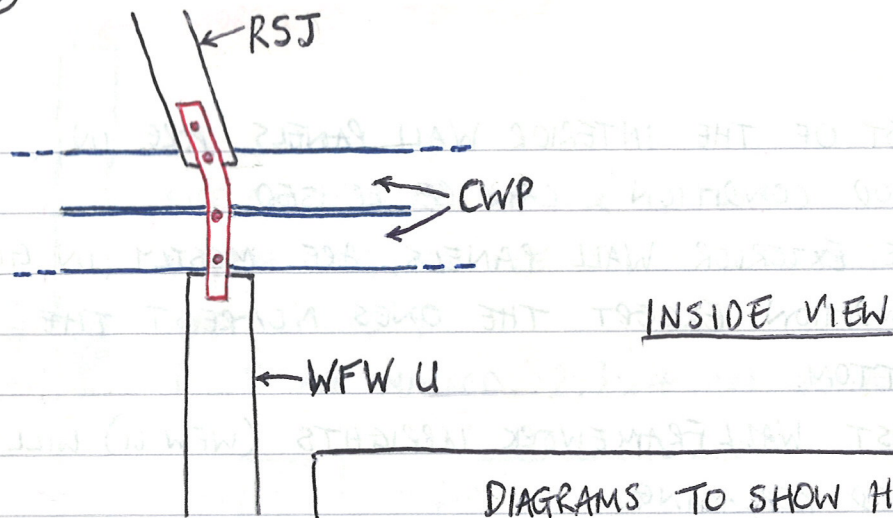
SOME NOGGINS HAVE BEEN REPLACED IN THE PAST.

ANY REPLACEMENTS OF 2, 3 OR 4 HAVE BEEN NAILED IN, NOT JOINED.

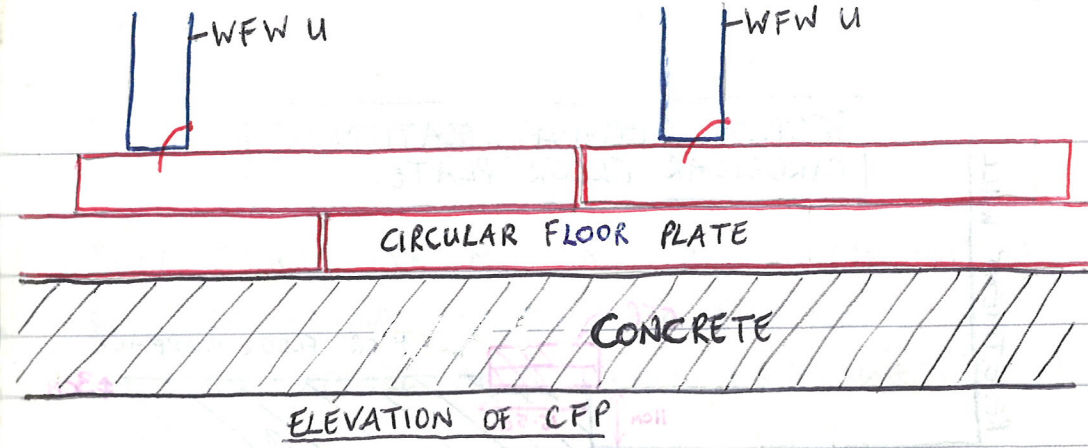
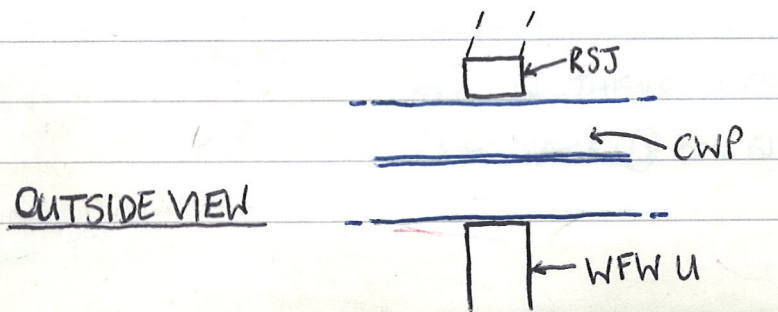
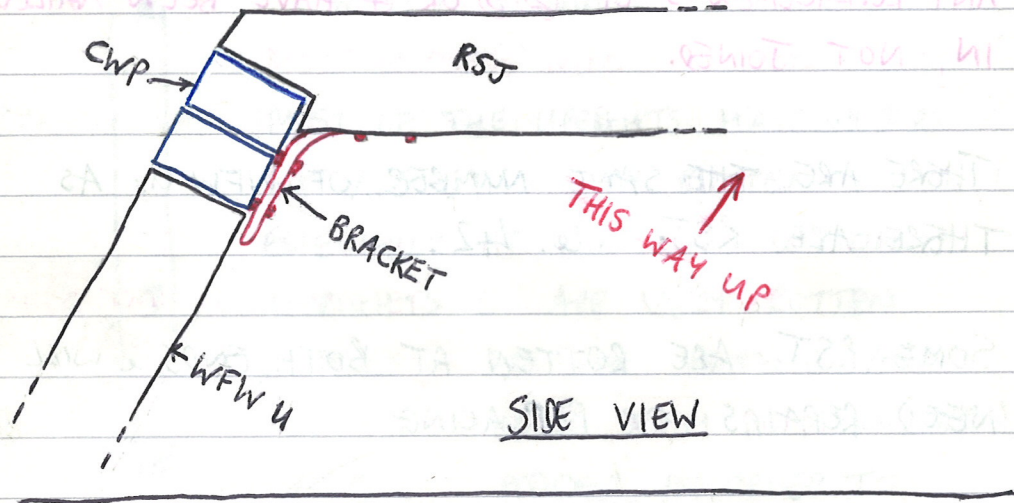
THERE ARE THE SAME NUMBER OF WFW Us AS THERE ARE RSJs i.e. 42.

SOME RSJs ARE ROTTEN AT BOTH ENDS & WILL NEED REPAIRS OR REPLACING.

See Photos : 50, 56, 58, 61



DIAGRAMS TO SHOW HOW RSJS ARE ATTACHED TO THE CWP.

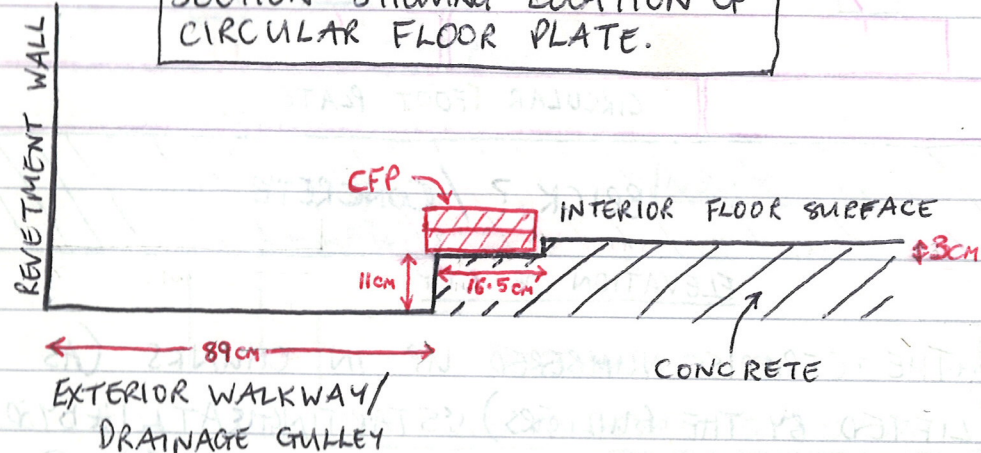


SOME OF THE CFP IS NUMBERED UP IN CHUNKS (AS LIFTED BY THE BUILDERS) SOME IS JUST LABELLED 4566 CFP. IT IS TO BE FOUND ON PALLETS (17) & (18). THE TOP & BOTTOM PIECES ARE NAILED TOGETHER, NOT JOINTED LIKE THE CWP (SEE PAGE 18). THE WFW UPRIGHTS SIT ON THE CFP & ARE NAILED ON. THE ORIGINAL UPRIGHTS WOULD HAVE BEEN MORTICED ONTO THE CFP AS IN BUILDING S44, BUT BECAUSE THE BASE OF EACH ONE IS A REPAIR THEY HAVE JUST BEEN NAILED.

See Photo: 57, 59



SECTION SHOWING LOCATION OF CIRCULAR FLOOR PLATE.



THE CFP SITS ON A LEDGE & SLIGHTLY OVERHANGS THE EXTERNAL WALKWAY & DOES NOT QUITE TOUCH THE EDGE OF THE INTERIOR FLOOR SURFACE. (THERE IS A GAP OF ABOUT 3cm ALL THE WAY AROUND). THE CFP IS ATTACHED TO THE CONCRETE BASE BY 6 LARGE IRON BOLTS EVENLY SPACED.

8 DRAIN PIPES ARE EVENLY SPREAD AROUND THE BASE OF THE REVELTMENT WALL TO DRAIN WATER FROM THE MOUND INTO THE DRAINAGE GULLY & AWAY. THE MAIN DRAIN WAS IN FRONT OF THE MAIN TUNNEL

5 IRON RODS STICK OUT OF REVELTMENT WALL ABOUT 1m DOWN FROM THE TOP.

UN-NUMBERED ITEMS IN 486

- ① ROOF BOARDS ARE NOT INDIVIDUALLY NUMBERED BUT ARE BOUND TOGETHER IN BATCHES & LABELLED ACCORDING TO BAYS (SEE PAGE ① & ⑤)
- ② ROOF BOARD SUPPORTS (RBS) ARE ~~ARE~~ MOSTLY UNLABELLED BUT ARE BOUND TOGETHER ON PALLET ⑭. FOR REFERENCE SOME ARE LABELLED '486 RBS'. THE BUILDERS THINK THESE ARE OFF CUTS.
- ③ BEADING/FACINGS FOR AROUND THE WINDOWS. THESE WERE TOO NUMEROUS TO DO INDIVIDUAL NUMBERS FOR. EACH PIECE IS THE SAME FOR EACH WINDOW. INSIDE PIECES ARE PAINTED CREAM, OUTSIDE PIECES ARE PAINTED RED & GREY. MOST OF THESE ARE ON PALLET ⑩.
- ④ CIRCULAR FLOOR PLATE HAS BEEN PARTIALLY NUMBERED & PARTIALLY LABELLED 486 CFP. THIS IS ON PALLETS ⑰ & ⑱.

(30)

### ITEMS NEEDING REPLACEMENT

- ① EXTERNAL WALL PANELS NEAR THE BOTTOM WERE VERY WET. SOME FROM HIGHER UP FELL OFF & DISINTEGRATED. EACH BAY WILL PROBABLY NEED 5 OR 6 REPLACEMENTS.
- ② SOME LONG ROOF BOARDS WERE WET AT TOP & BOTTOM. BUILDERS ESTIMATE 90% COULD BE RE-USED.
- ③ CANOPY ABOVE MAIN ENTRANCE DOORS WILL NEED TOTAL REPLACEMENT.
- ④ MOST NOGGINS WERE VERY WET & ROTTEN.
- ⑤ MOST WALL FRAMEWORK UPRIGHTS WERE WET & ROTTEN
- ⑥ THE CIRCULAR WALL PLATE WAS WET & ROTTEN