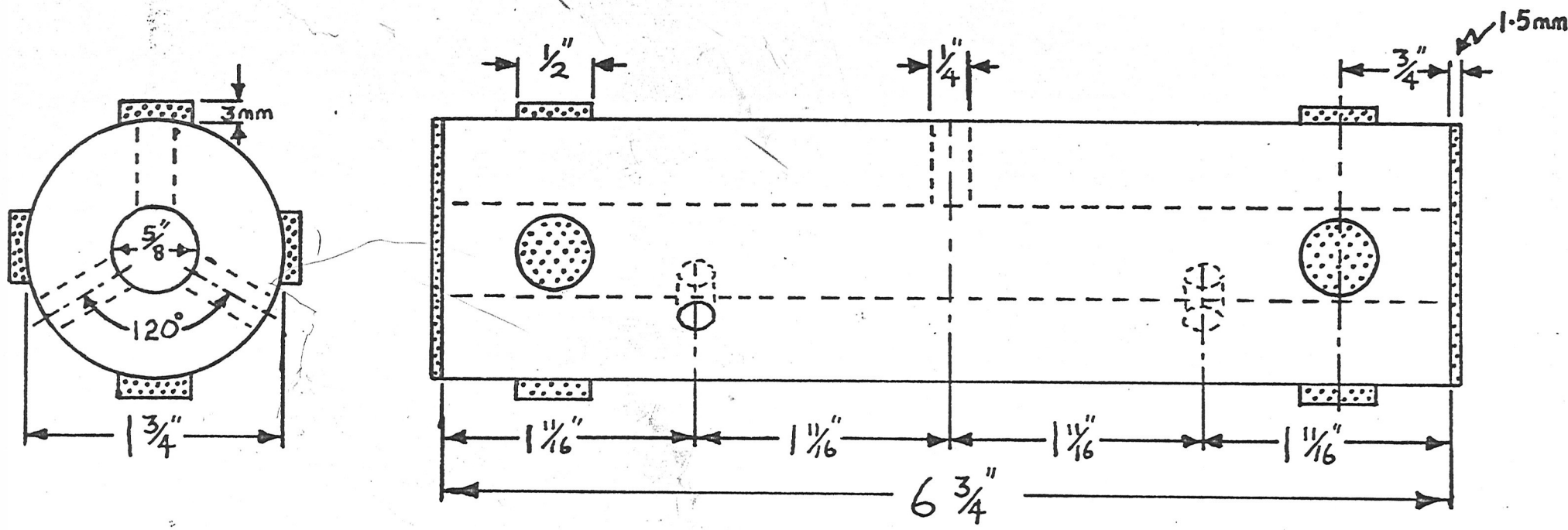


WAsc 1896

Drawing of 'K' Round

When seeing K-rounds - supply
 Lead 00
 ID
 Surface Area
 Charge Wt 364g → 367g

11g 8 ± 2 leg 1g
 Leg 1 $6 \frac{3}{4}$ 171mm 2g
 Dia 1.675" 42.545
 ID - 13.64
 1 Lab



KEY  = E.C.

FREE STANDING "K"-ROUND

TUBULAR PROPELLANT $1 \frac{3}{4}$ " OD x $\frac{5}{8}$ " ID BY $6 \frac{3}{4}$ " LONG. END DISCED WITH 1.5mm THICK ETHYL CELLULOSE SHEET. FOUR $\frac{1}{2}$ " DIA x 3mm THICK ETHYL CELLULOSE TABS AT EACH END AND THREE $\frac{1}{4}$ " HOLES AT 120° DRILLED RADIALLY