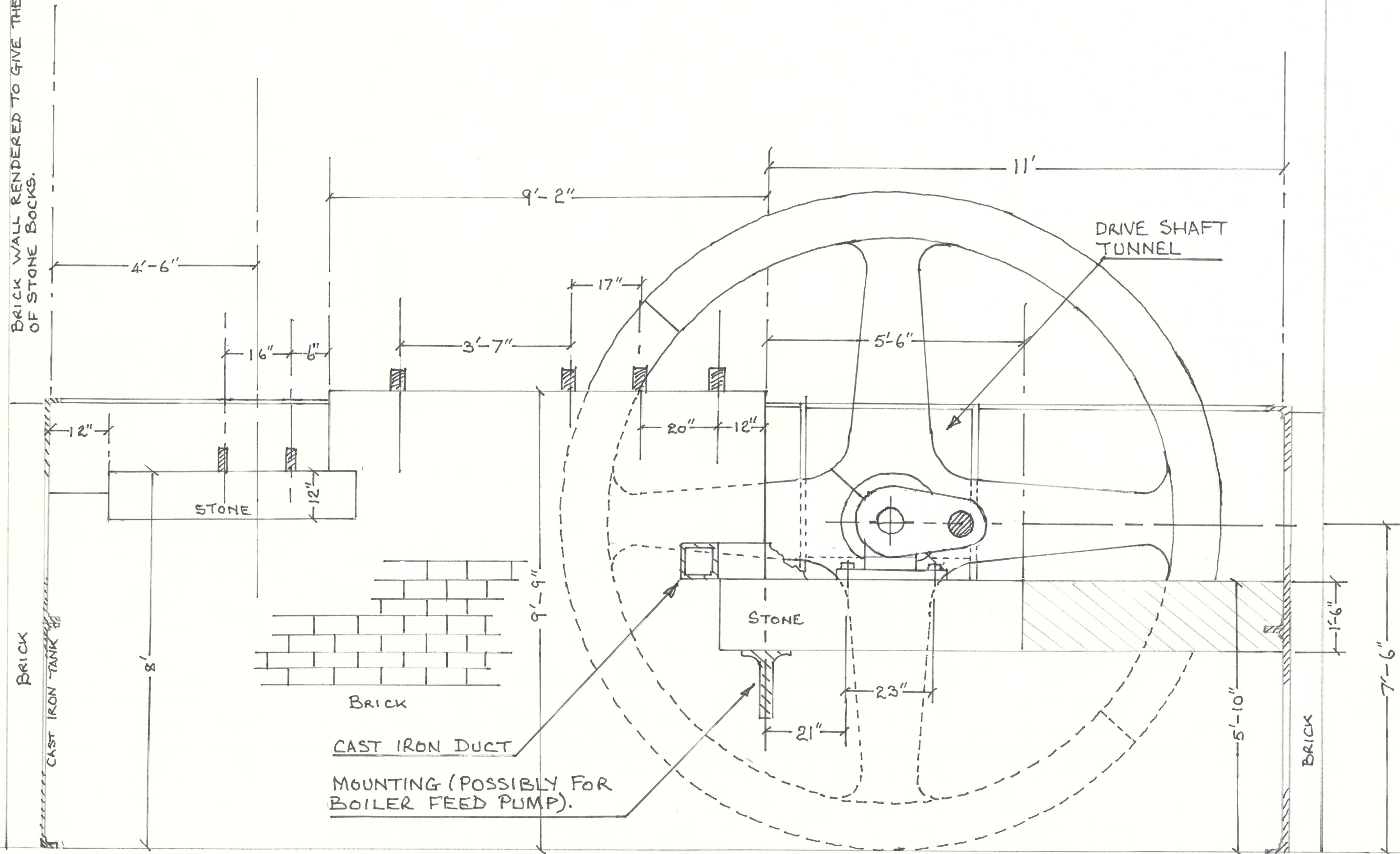


WASC 1875

Gp C Mill Plan
View and Beam
Engine Drawings

THE BEAM ENGINE BASE AT W.A.R.G.F. GROUP C INCORPORATING MILL.
 ALL MEASUREMENTS ARE APPROXIMATE DUE TO PROBLEM OF ACCESS.
 SECTION THROUGH AA.
 DRAWN BY J. WILSON 19TH JULY 2001
 SCALE 1/2" = 1 FT.
 DRAWING 1 OF 3.



Do Not Scale

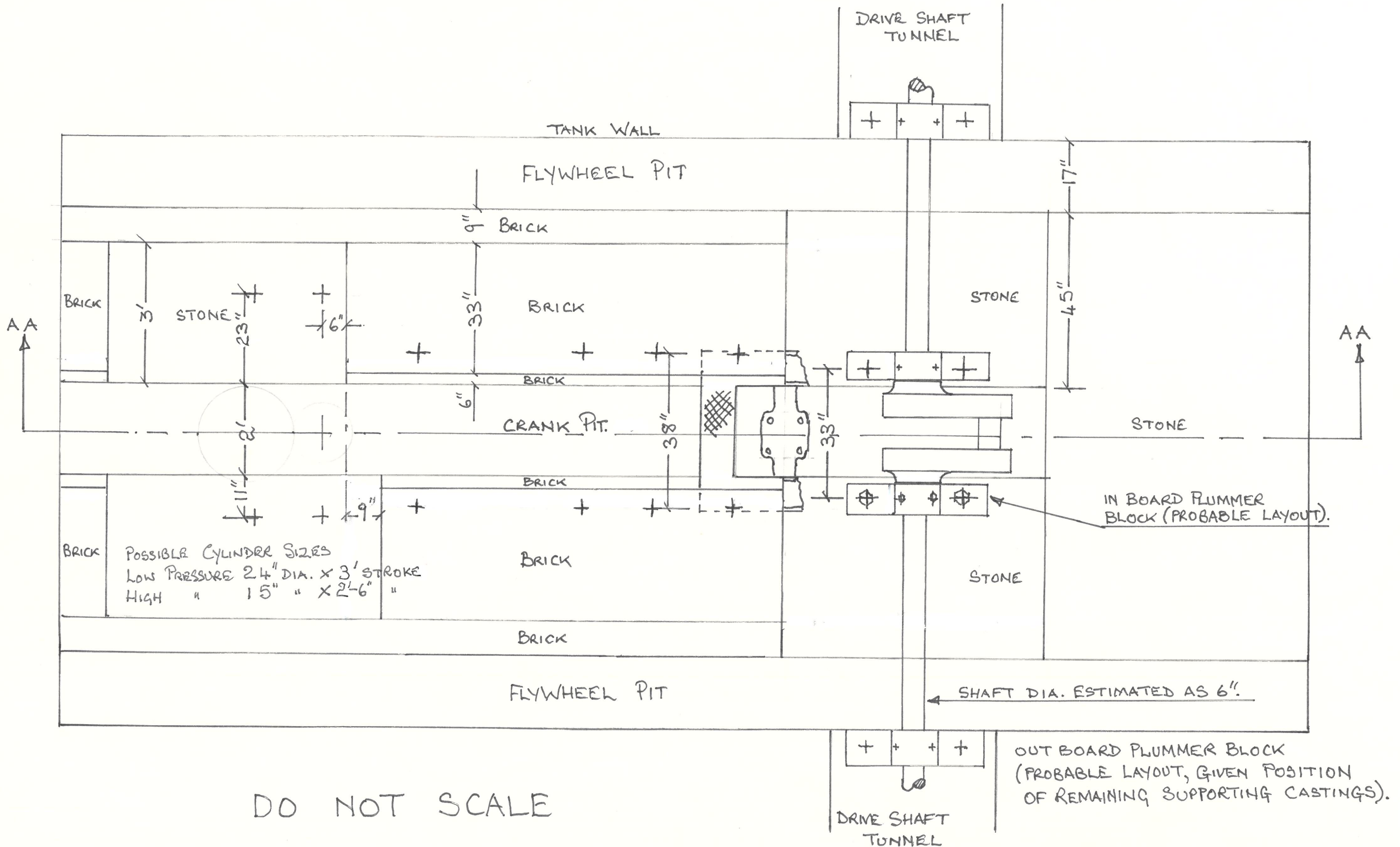
THE BEAM ENGINE BASE. DRAWING 2 OF 3.

ALL MEASUREMENTS ARE APPROXIMATE.

SCALE 1/2" = 1 FT.

DRAWN BY J. WILSON 19TH JULY 2001

ESTIMATED STROKE 3' BASED ON
CLEARANCE IN CRANK PIT.



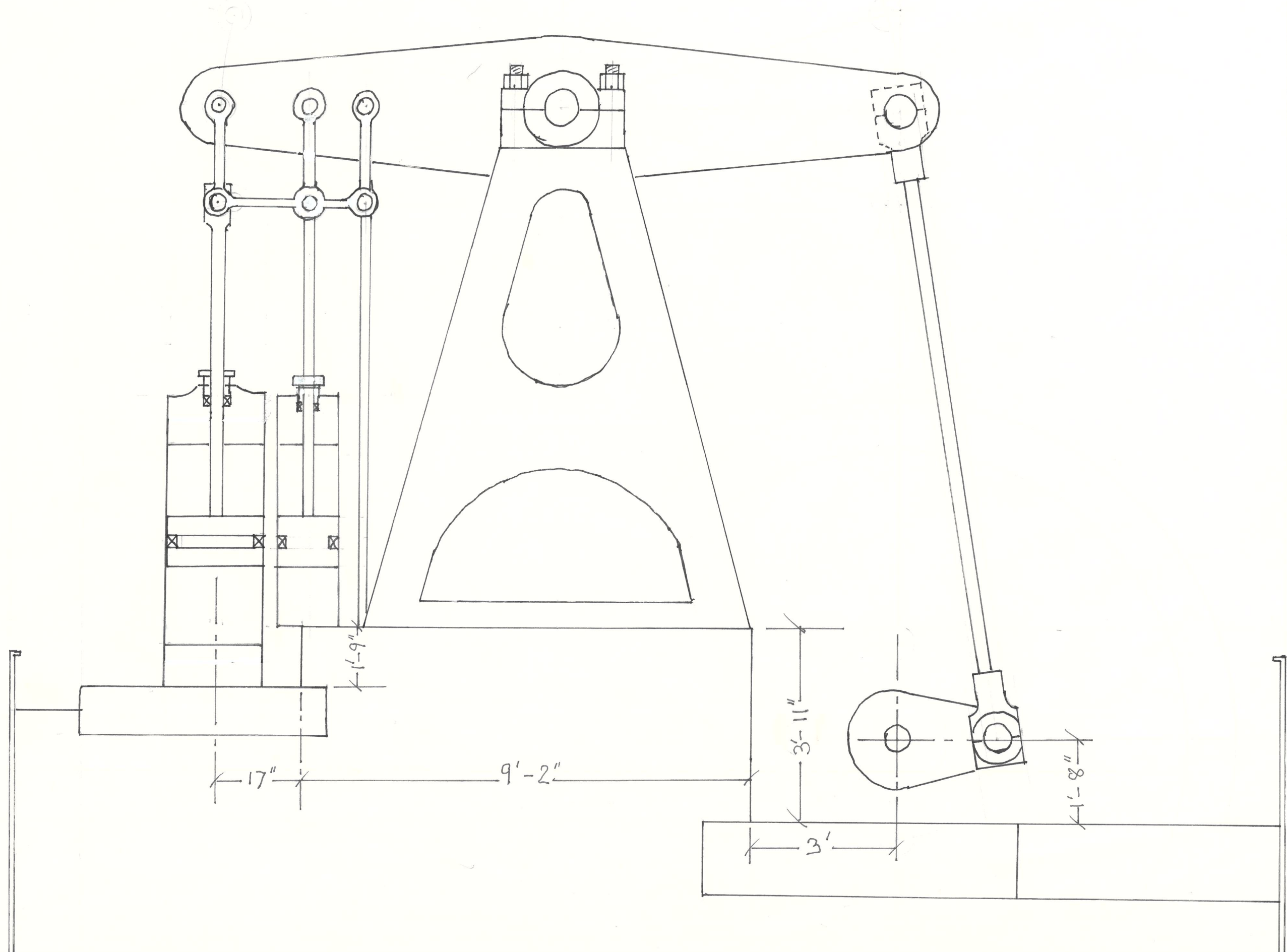
DO NOT SCALE

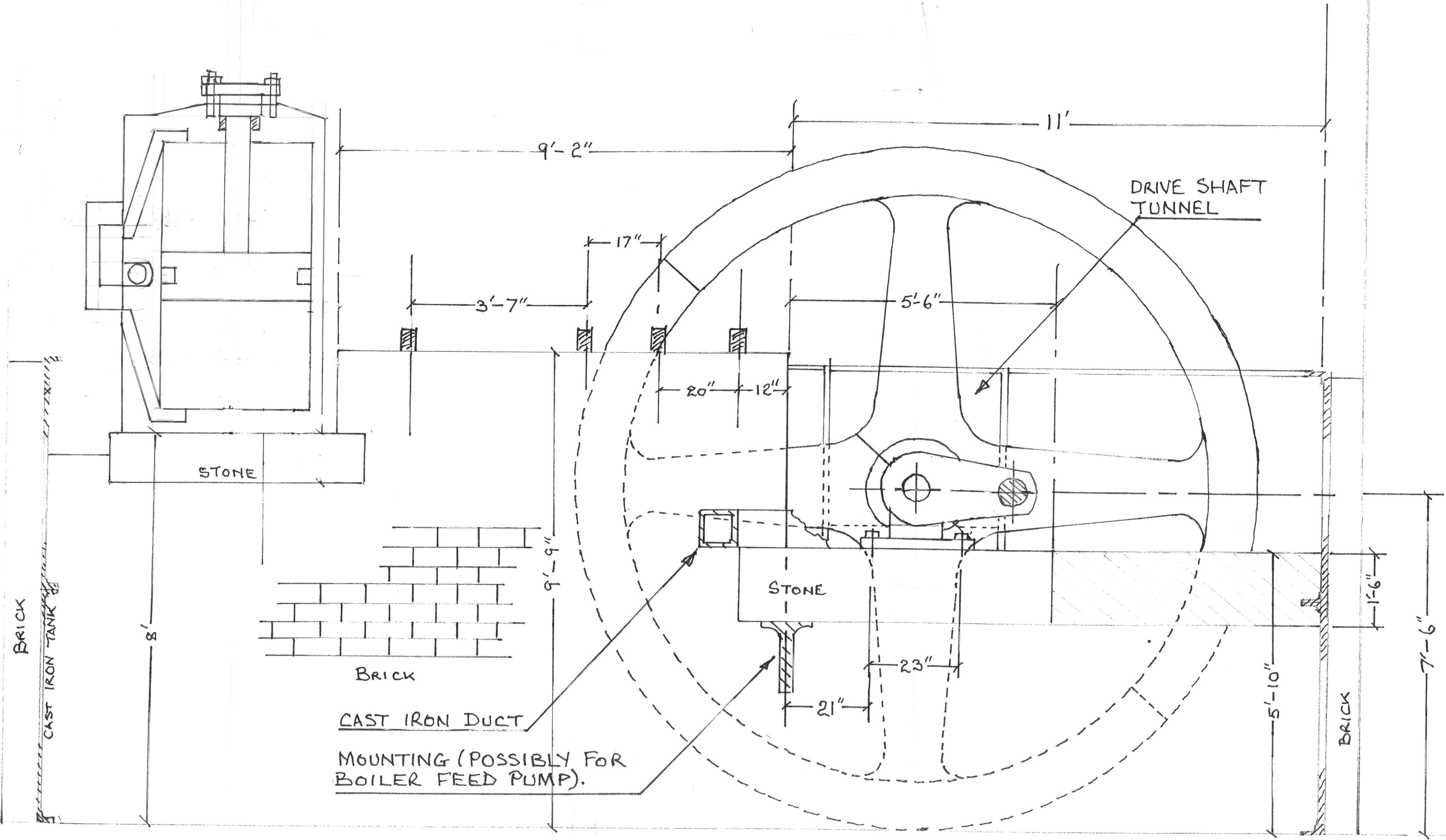
BEAM ENGINE GENERAL LAYOUT.

SCALE $\frac{1}{2}'' = 1 \text{ FT.}$

DRAWN BY J. WILSON 19TH JULY 2001.

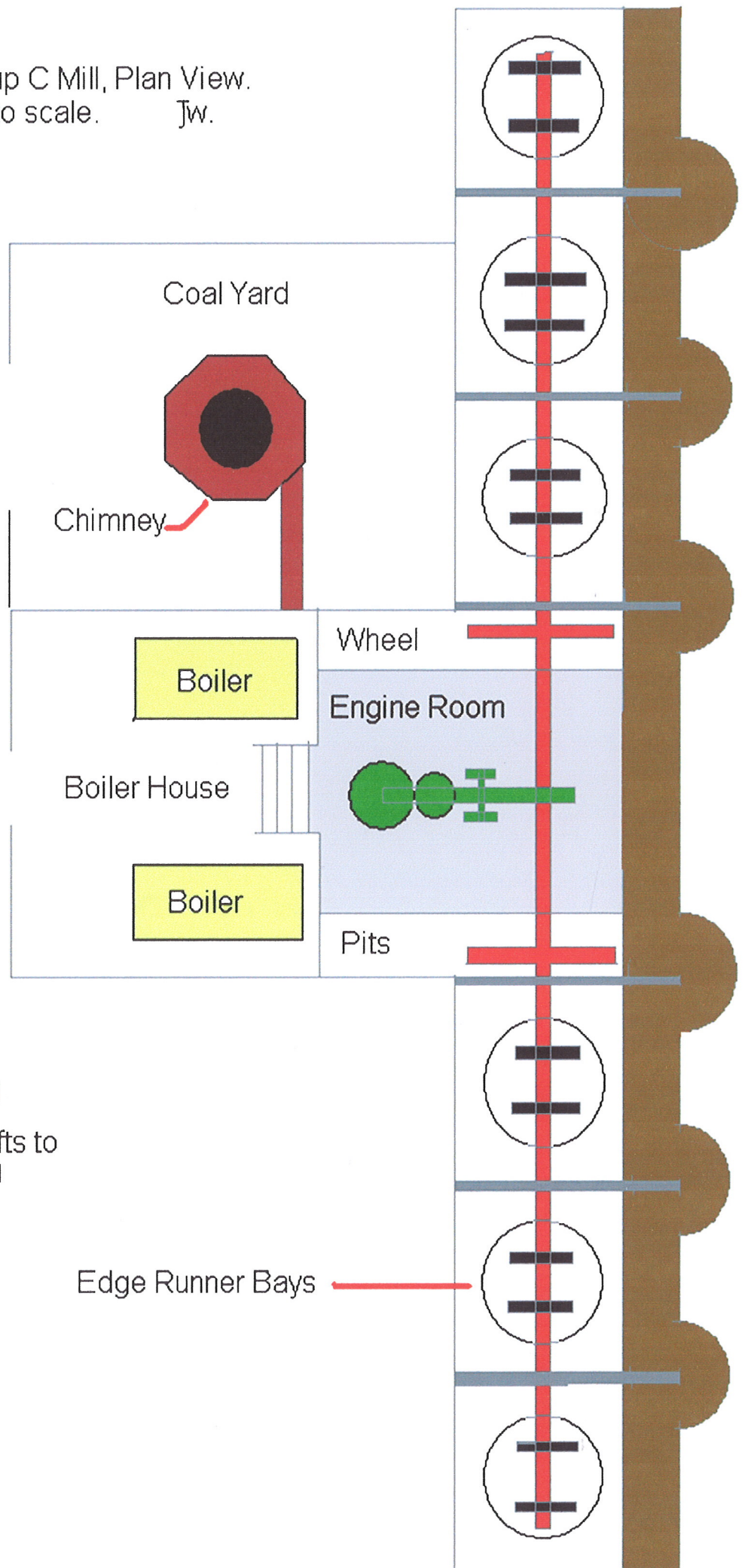
DRAWING 3 OF 3.





Do Not Scale

Group C Mill, Plan View.
Not to scale. Jw.



Veranda 

Beam Engine 

Flywheels & Drive Shafts to
Edge Runners 

Engine Room Floor,
Level with Veranda &
4 Feet above Boiler
House Floor 

Blast Walls 