

MOD FORM 583

WASC 1813

On Her Majesty's Service

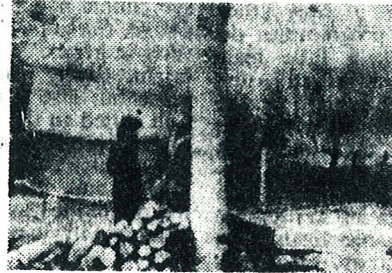
POSTAGE

WASC 1813

Good worker

At the Weald and Downland Museum, in the tranquillity of the Sussex countryside, timber-framed and early brick buildings have been rescued from the onslaught of bypasses and shopping centres. They are painstakingly researched, expertly re-erected and delightfully set in the agri-industrial context of the Weald.

Visitors now enjoy regular demonstrations of local skills and industries while at the same time much-needed funds are generated for the charitable trust project.



Burning charcoal at the Weald and Downland Museum

The museum manages 22 acres of coppice and has engaged Albert Peacock to produce 5,000 hazel spars each week, before an absorbed public, for thatching work. The coppice also produces material for hurdle-making and fencing, together with wattle infill for restoring timber buildings.

Two burns a week at the museum of charcoal, traditionally required to fuel the forges and furnaces of the sixteenth and seventeenth-century Sussex ironmakers, now produce over two tonnes of high-quality charcoal for a growing market in summer barbeques.

The activity also explains how the nearby village of Charlton got its name. It had eight such charcoal kilns burning continuously, incidentally deforesting the landscape at an alarming rate.

Jonathan Bryant

Times
12-1-84
Pg. 8.

Malcolm

Possibly you've already seen this - I only manage to read the Times on a Saturday!

Bob Rainbird sent this in.

Chris Evans