

# ILFORD

Photographic paper  
Papier photographique

Photographisches Papier  
Carta fotografica

Papel fotográfico  
Fotografiskt papper

WASC  
1655  
1-75

WAI  
0443

Set 1

rec'd  
29.5.87

~~Set 1~~  
B 73/1 — 74  
+ B 94/2

+ list

ORIGINALS

ILFORD  
3.1M  
3

Wasc 1655 1-75  
COMPLETE SET



WASC 1655

WAI 0443

Royal Gunpowder Factory Prints from Royal Gunpowder Factory photograph albums, 1 to 75. See WASC 0936.

- 1 17.1.1861 No 10 Mill lower island explosion with charge of 50lbs of Enfield Powder
- 2 17.1.1861 No 10 Mill lower island explosion with charge of 50lbs of Enfield Powder
- 3 17.1.1861 No 10 Mill lower island explosion with charge of 50lbs of Enfield Powder
- 4 27.5.1861 Group A Mills Explosion
- 5 22.8.1890 Explosion No 1 Breaking -down house, showing tail stream (NW)
- 6 22.8.1890 Explosion No 1 Breaking - down house, ruins as seen from traverse (north)
- 7 7.5.1894 Explosion Quinton Hill Nitro-glycerine Factory washing house north
- 8 7.5.1894 Explosion Quinton Hill Nitro-glycerine Factory reeling house
- 9 7.5.1894 Explosion Quinton Hill Nitro-glycerine Factory wash water settling house
- 10 1897 Nitrating house Edmonsey (SW)
- 11 1897 Newtons Pool (HN 316)
- 12 Group B Mills Lower Island showing railway on the western edge of Group B looking NE
- 13 15.12.1902 Group G Mills Explosion- 57lbs of MD Cordite Paste in incorporating machine  
in Bay 3 and Engine house
- 14 15.12.1902 Group G Mills Explosion- 57lbs of MD Cordite Paste in incorporating machine  
in Bay 3. Bays 4, 5, and 6 back view
- 15 15.12.1902 Group G Mills Explosion- Bay 3 Effect on Group E (see also WASC 103)
- 16 1903 No 1 Glycerine charge house, QH
- 17 10.5.1904 Front view of Group H
- 18 10.5.1904 View of Group E showing traverse
- 19 10.5.1904 Powder boat outside corrugated iron porch on landing stage of Group H (HN  
317)
- 20 1904 Erection of stoves - Cob Mead
- 21 1904 Erection of magazine - Cob Mead
- 22 5.1908 Old Dining hall, near main Office
- 23 5.1909 Guncotton displacement apparatus
- 24 Beaters and Poachers - Guncotton
- 25 7.1917 Women stokers (see WASC 813/8)
- 26 7.1917 Incorporating house - cordite including workers
- 27 7.1917 Small press house - cordite including workers with staff identification (Miss A  
Hopkins; Mrs Taylor nee Mansfield, Miss K Hale)
- 27-01 Identification sheet - 0443\_27
- 28 7.1917 Large press house - cordite including workers
- 29 7.1917 Women workers showing different types of dress uniform (functions identified)
- 29-01 Identification by function on back - 0443\_29
- 30 7.1917 Electric tractor (Rail)
- 31 7.1917 Oil locomotive and trucks (Rail)
- 32 7.1917 Guncotton stove setters (workers)
- 33 7.1917 Guncotton nitrating house (also LF)
- 34 7.1917 Guncotton boiling house with workers
- 35 7.1917 Guncotton pulping machines with workers
- 36 7.1917 Guncotton moulding machines with workers
- 37 10.1917 Women workers 1917, range of uniforms
- 38 10.1917 Women workers - saltpetre refinery
- 39 10.1917 Types of clothing for slightly wet and very wet work
- 40 Oil locomotive and trucks (Rail)
- 41 Oil locomotive and trucks on bridge crossing Millhead Stream near Sandhurst Hospital  
(Rail)
- 42 Oil locomotive and trucks looking north (Rail) (also LF)



- 43 Oil locomotive and trucks looking north towards refinery bridge (Rail) (HN 316 ?)
- 44 Oil locomotive and trucks looking north east (Rail)
- 45 Oil locomotive and trucks looking north (Rail)
- 46 5.1918 Fire brigade, Quinton Hill
- 47 5.1918 Fire brigade - Quinton Hill . Women workers with man supervisor and staff identification(M Toole; H Wade; Brown; L Smith; T Waters; Emmie)
- 47-01 Identification sheet - 0443\_47
- 48 14.11.1918 Air Raid Shelters near Main Office (image missing)
- 49 25.4.1919 CE water purification
- 50 23.4.1919 CE sieving house
- 51 5.5.1921 Guncotton pulping machine for India
- 52 "Cub" grabbing crane
- 53 "Cub" grabbing crane
- 54 Model of plant in use at the RGPF, exhibited in the Brussels Exhibition in 1910.  
Destroyed by fire - Acetone Recovery Plant
- 55 Model of plant in use at the RGPF, exhibited in the Brussels Exhibition in 1910.  
Destroyed by fire - Guncotton displacement plant
- 56 Model of plant in use at the RGPF, exhibited in the Brussels Exhibition in 1910.  
Destroyed by fire - Nitroglycerine factory
- 57 Model of plant in use at the RGPF, exhibited in the Brussels Exhibition in 1910.  
Destroyed by fire -Nitric Acid Plant
- 58 7.1940 Gunpowder No 1 Press House - General view
- 59 7.1940 Gunpowder No 1 Press House - Pebble Cutting machine
- 60 7.1940 Gunpowder No 1 Press House - Front view of press
- 61 7.1940 Gunpowder No 1 Press House - Side view of press
- 62 7.1940 Gunpowder No 1 Press House - Water wheel
- 63 7.1940 Gunpowder No 1 Press House - Water wheel from inside and starting wheel
- 64 7.1940 Gunpowder No 1 Press House - Pump for press driven by electric motor
- 65 7.1940 Gunpowder No 1 Press House - Pump for press driven by water wheel
- 66 15.11.1940 Explosion Damage caused by parachute bomb - No 2 reel store. View from  
NW corner of traverse
- 67 15.11.1940 Explosion damage caused by parachute bomb - No 2 reel store. Looking south
- 68 15.11.1940 Explosion Damage caused by parachute bomb - No 4 Incorporating Mill
- 69 1.1941 No 1 Breaking Down House - General view looking NE
- 70 1.1941 No 1 Breaking Down House - Water wheel clutch and gearing
- 71 1.1941 No 1 Breaking Down House - General view looking W
- 72 1.1941 No 1 Breaking Down House - Breaking down machine front view
- 73 1.1941 No 1 Breaking Down House - Breaking down machine back view
- 74 1.1941 No 1 Breaking Down House - Granulating machine
- 75 1.1941 No 1 Breaking Down House - Granulating machine with crushing machine





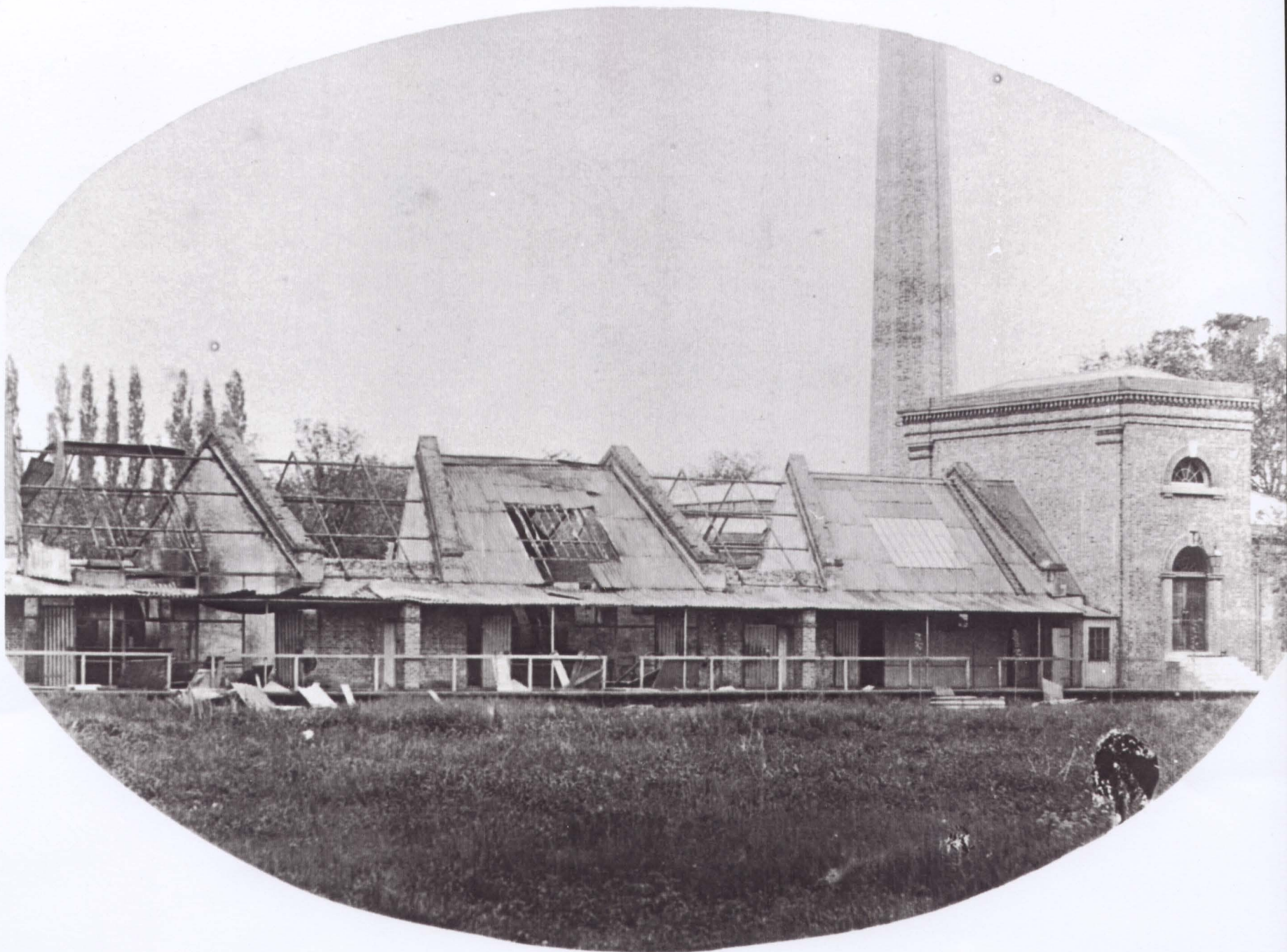




















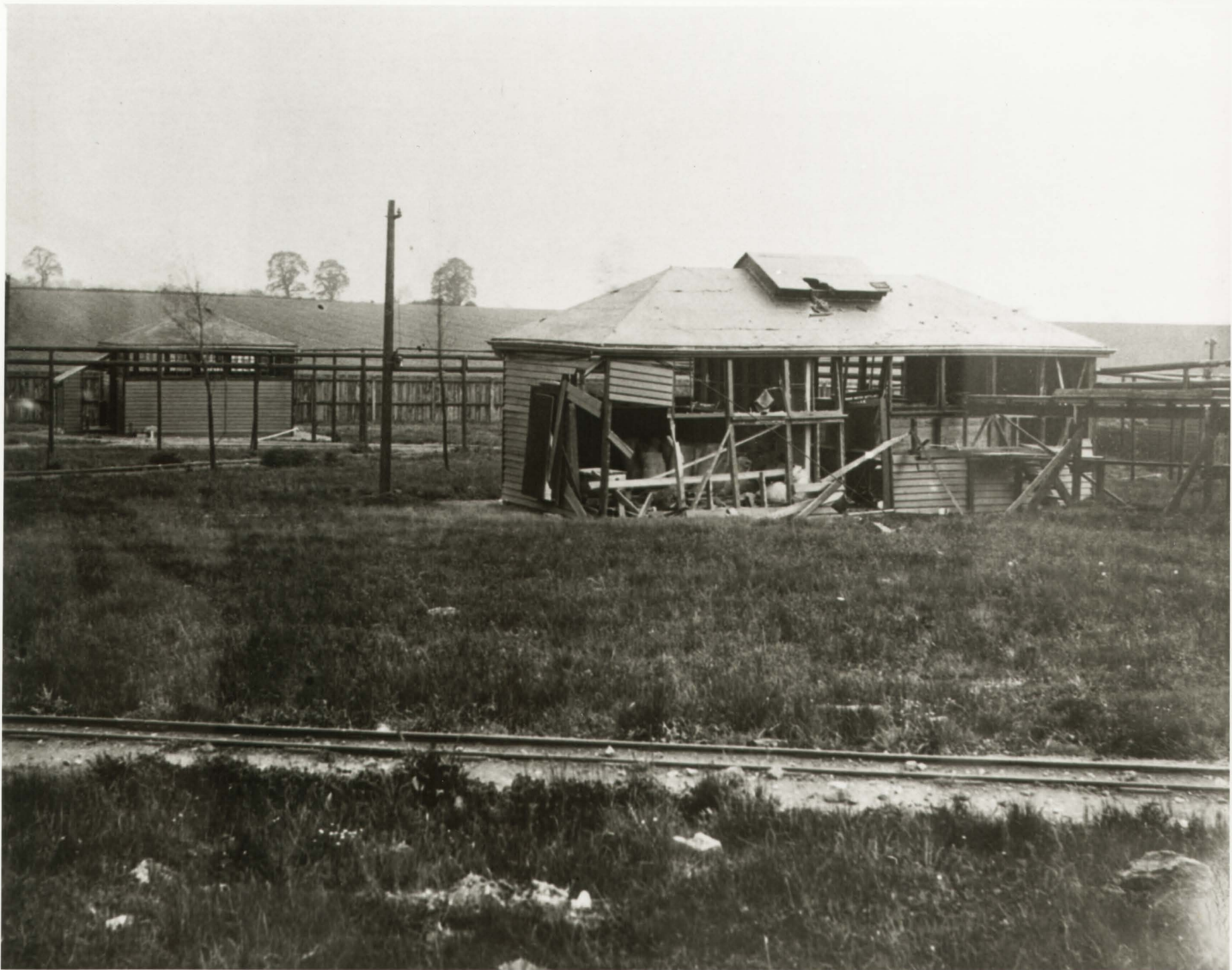




































See also  
WASC 103

Supply 5/860  
Group G Exploded 15.12.1902  
by 571bs of M.G. cordite Paste  
in Incorporating Machine in  
No 3 Bay - <sup>Photo illustrates</sup> Group <sup>collateral</sup> damage  
Original Print No 146  
Original Neg No B 32 GPE  
Fort Halstead Photo No B73/52

WASC 1655/15









NO. 1 BRIDGE OVER HOUSE C.M.



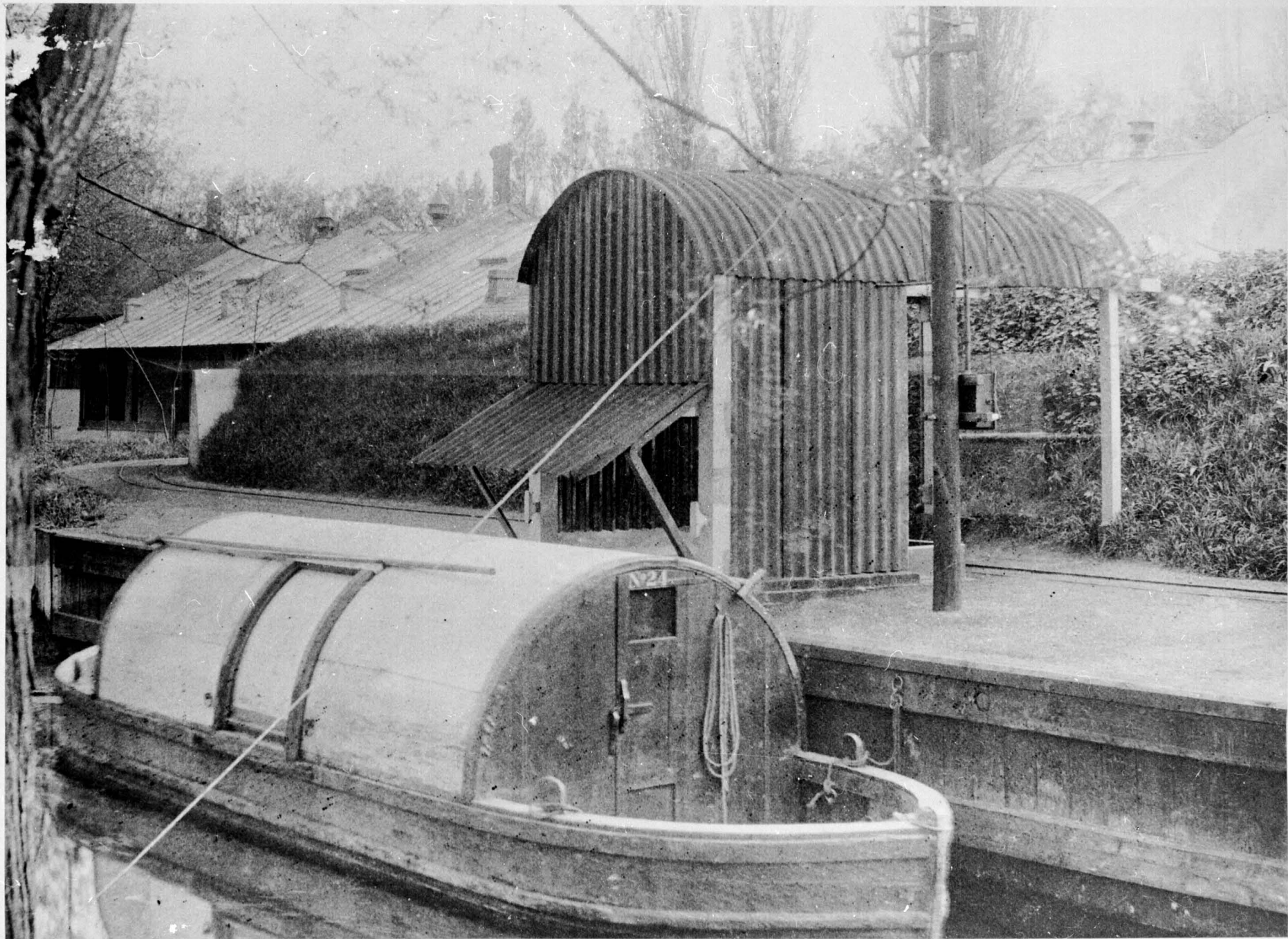


FRONT VIEW OF GROUP H.

















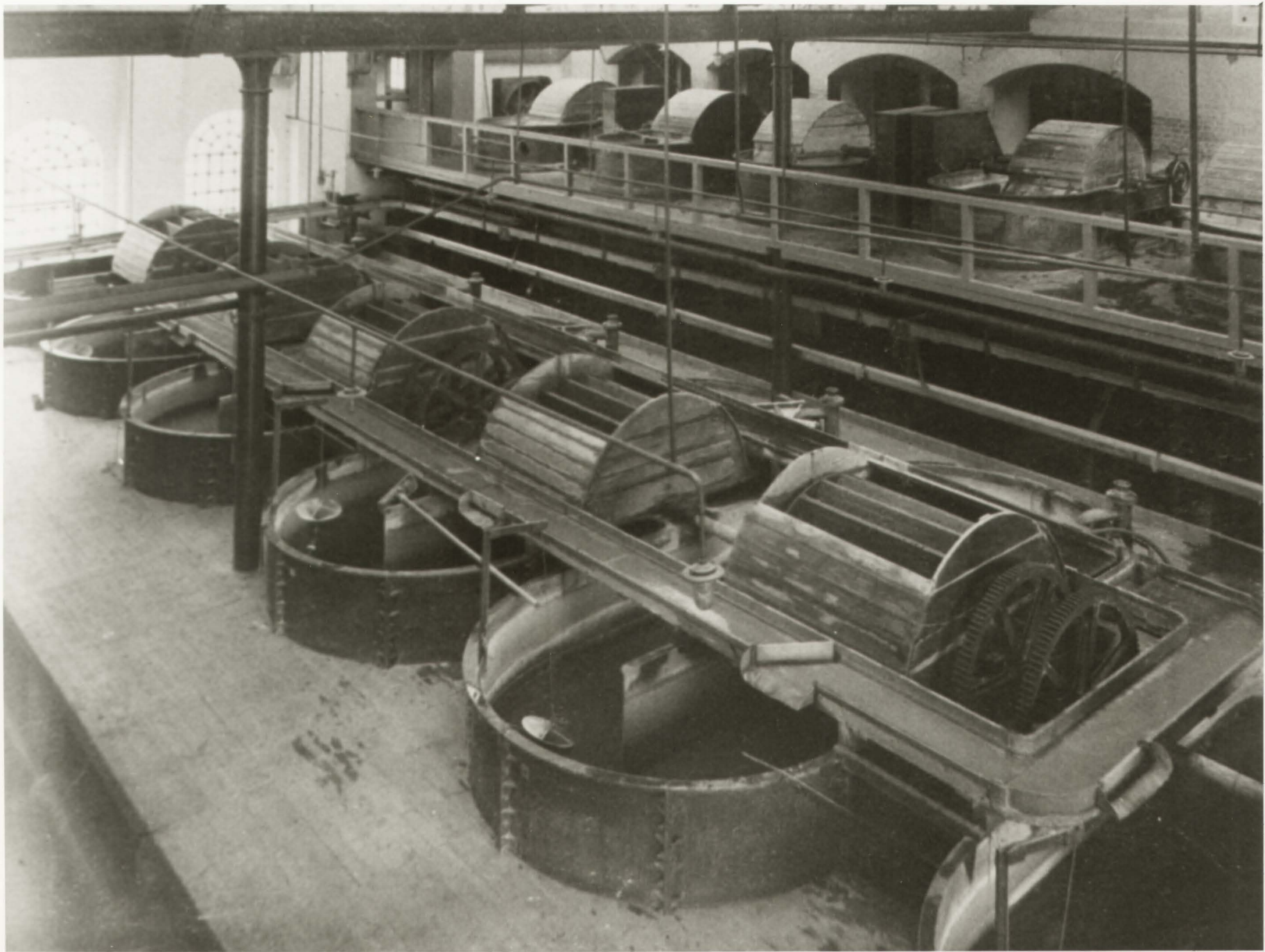






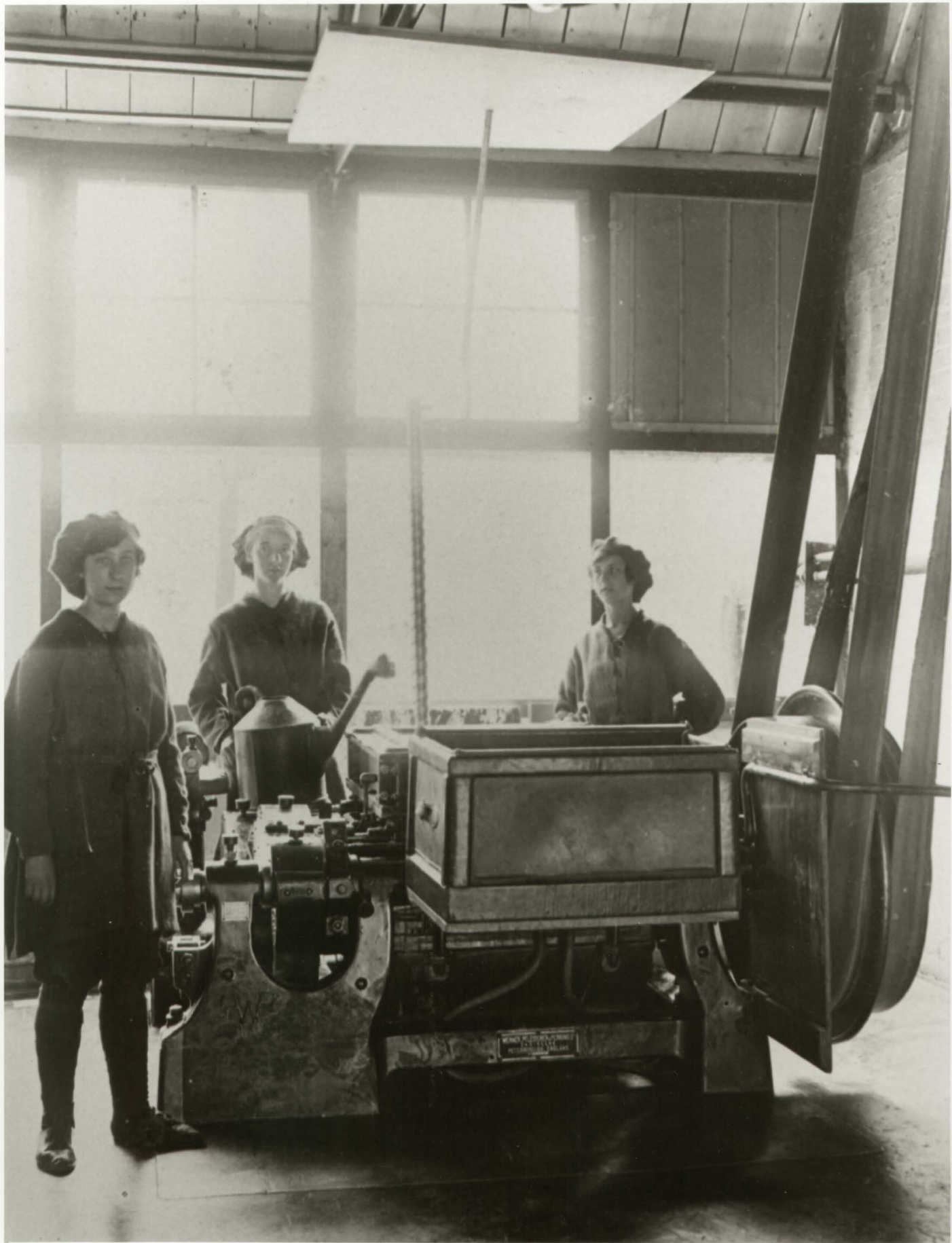














936

CORDITE PRESSING.

1.

2

3

4

6

MISS. A.  
HOPKINS

MRS TAYLOR  
NBE MANSFIELD

5.

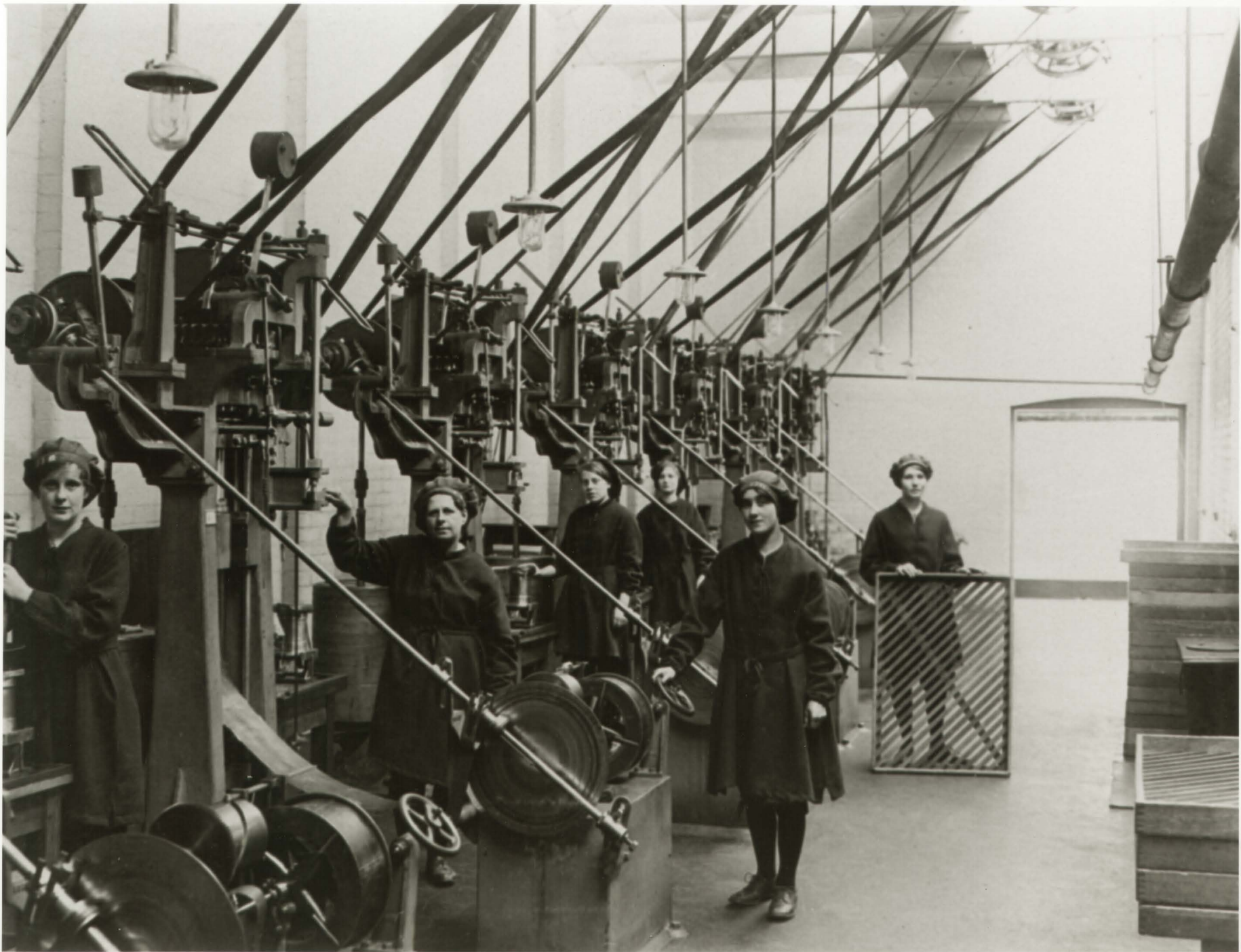
MISS K.  
HALE.

INFORMATION GIVEN BY MR. W. HALE  
BROOMSTICK HALL ROAD  
WALTHAM ABBEY.

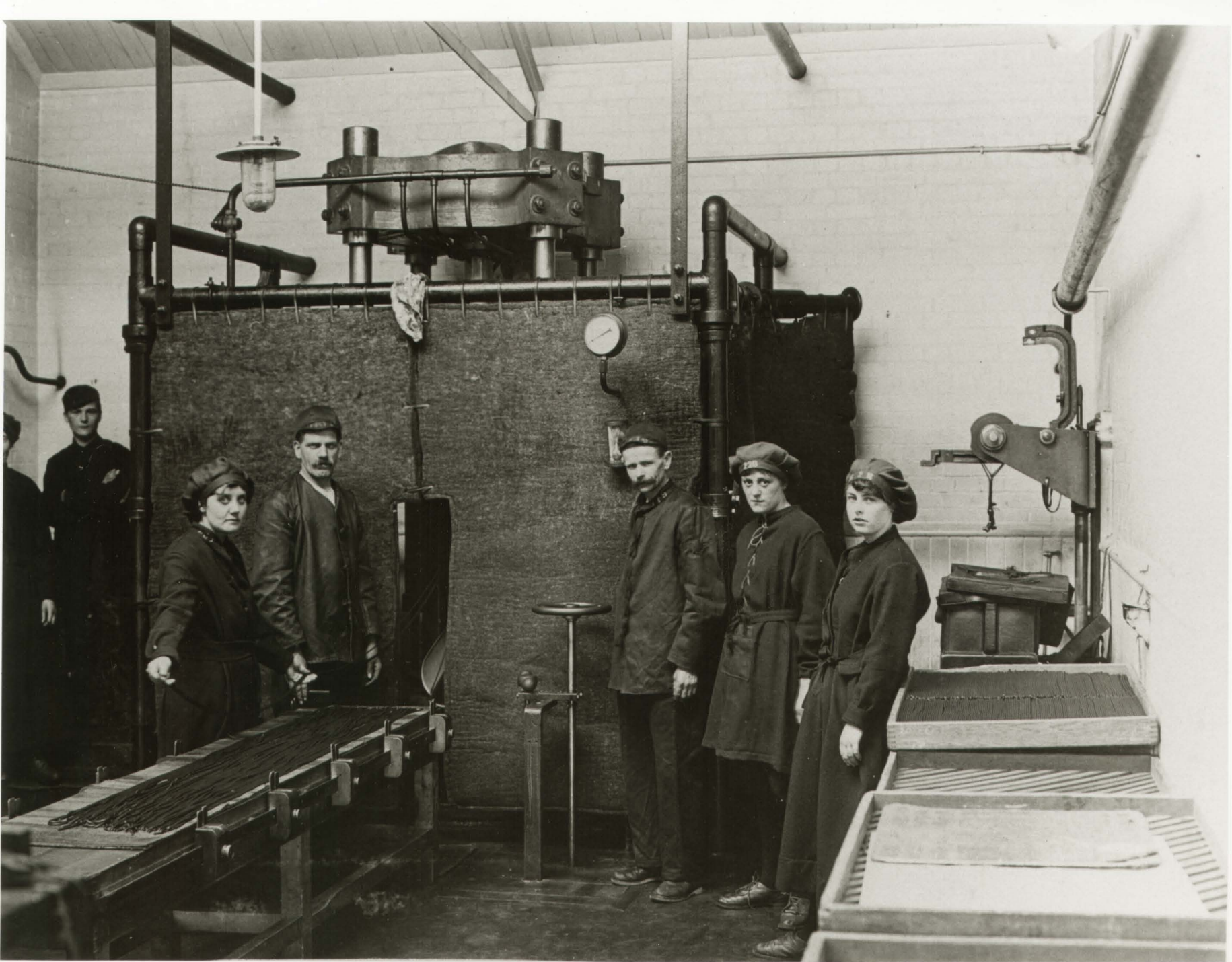
Mr. McLaren

The above refers to the photograph on show  
at the Historical Society's exhibition 25-27 August  
KN Bascombe.

3.9.73







1655/29

WOMEN AT THE RAFF -  
COSTUME GROUP

R-L, identified: 2 - cotton  
pinner

3, 5+6	4+7	8
/	Cordite	Incorp. of Cordite
Gunn cotton Workers	9	10 - Stoker
	Southgate Refiners	

Costume group

wai-0443-29<sup>(1)</sup> wasc-1655-29(1)  
h

936/11













































7715675



























R C P F  
1918

WASC  
1655/47

7 7  
1 2

M. Toole H Wade Brown L. Smith Waters Emmie -

3 4 5 6 7 8

M. TOOLE H WADE BROWN L. SMITH. T. WATERS EMMIE - ?





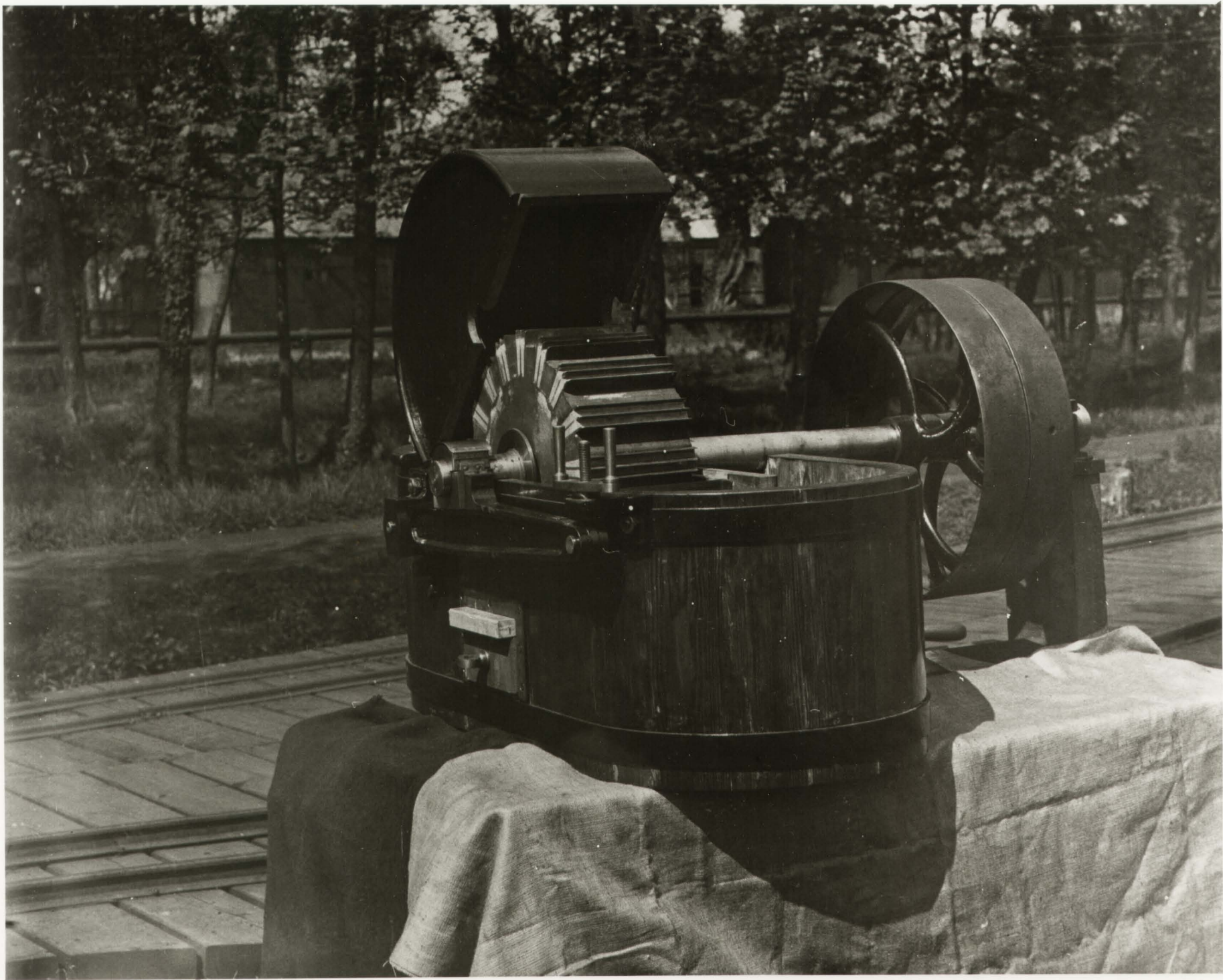












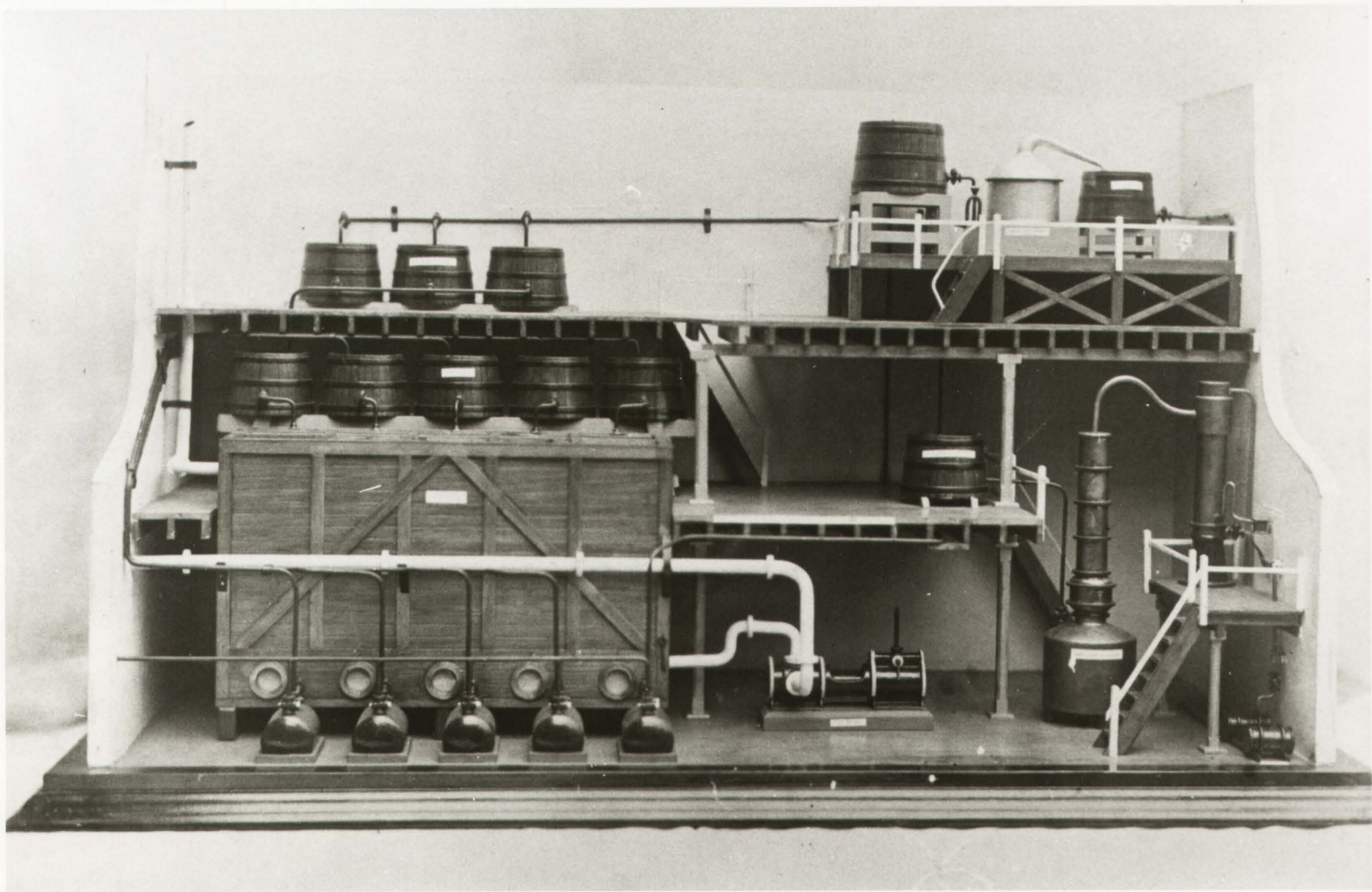




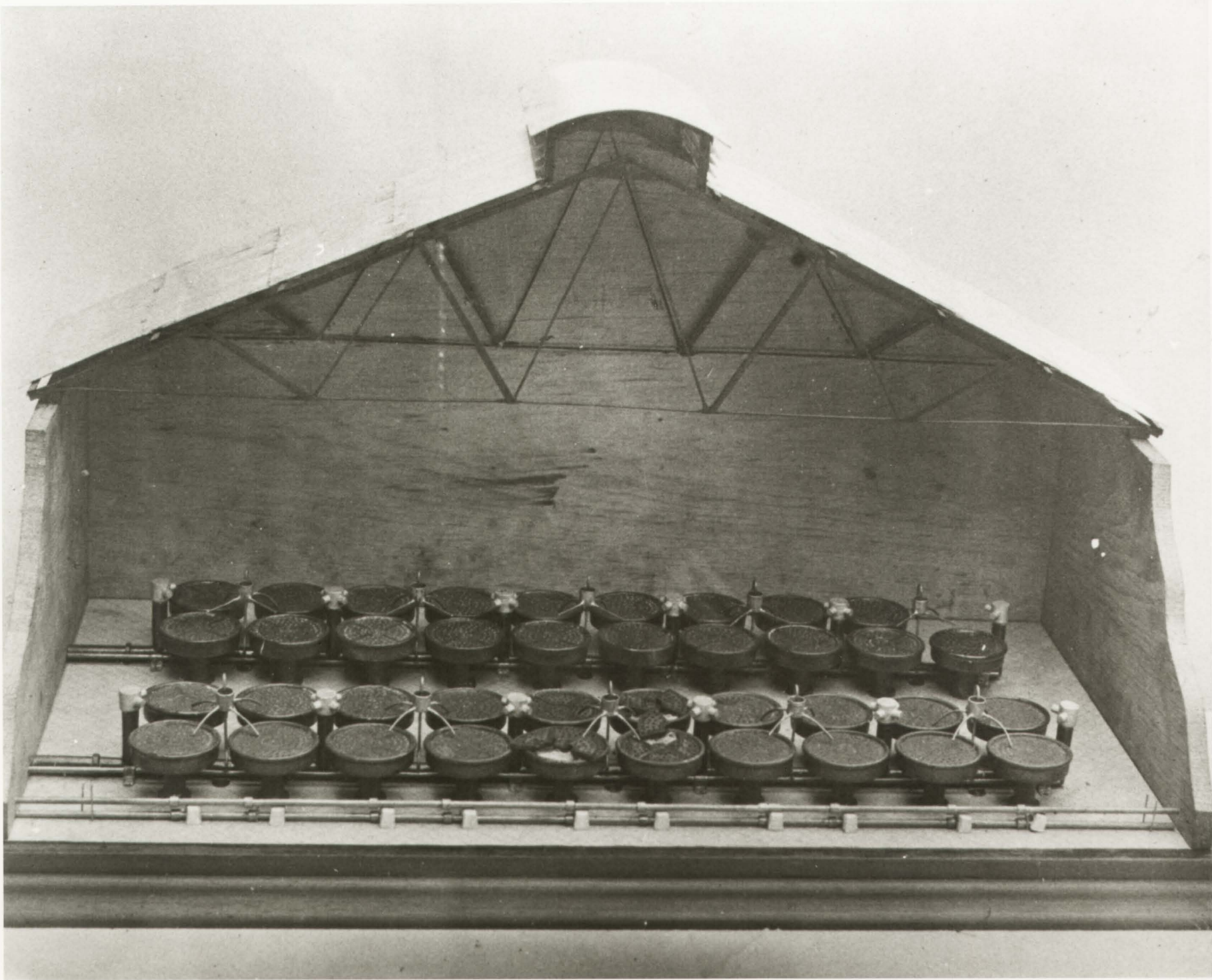




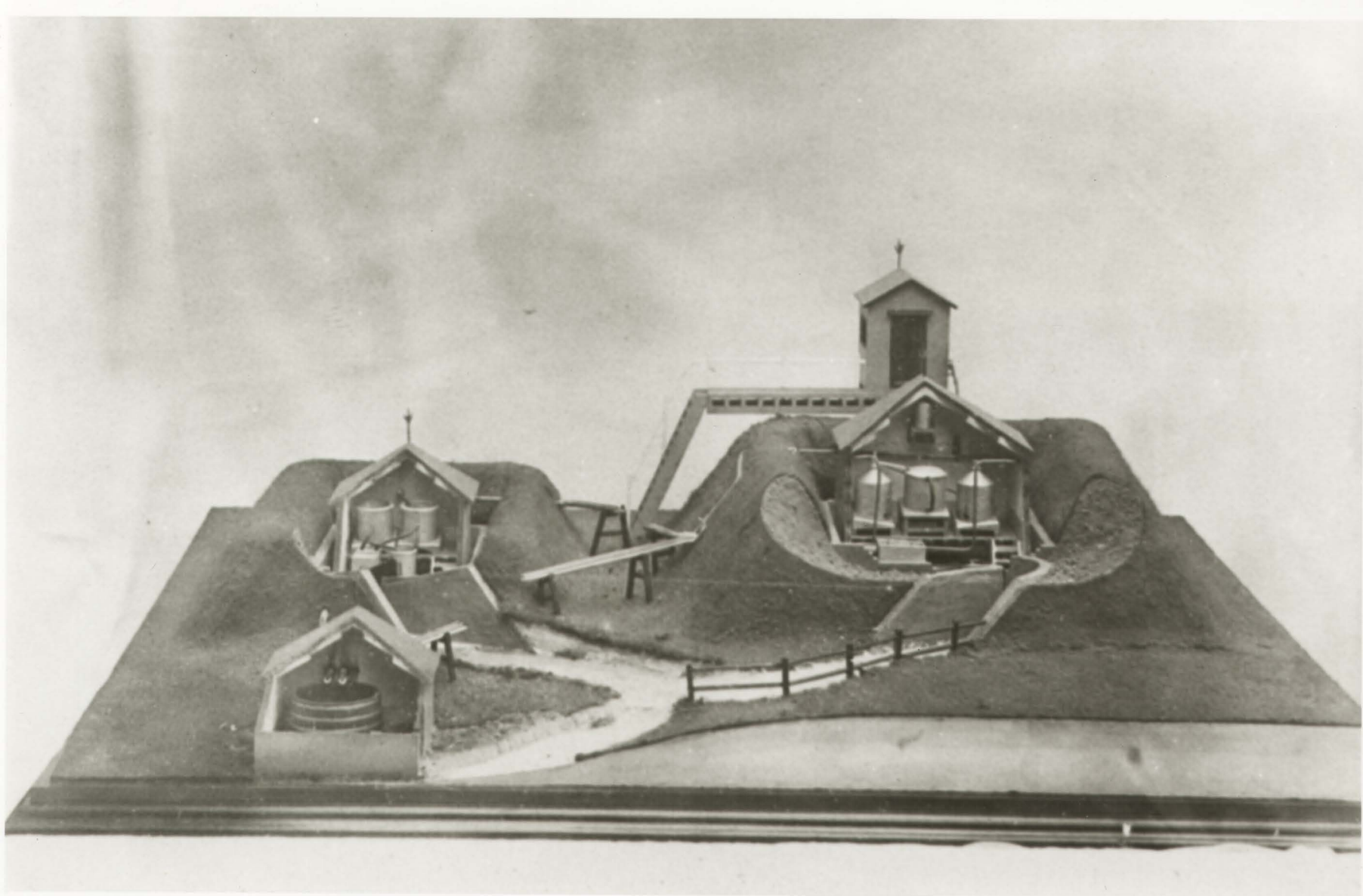




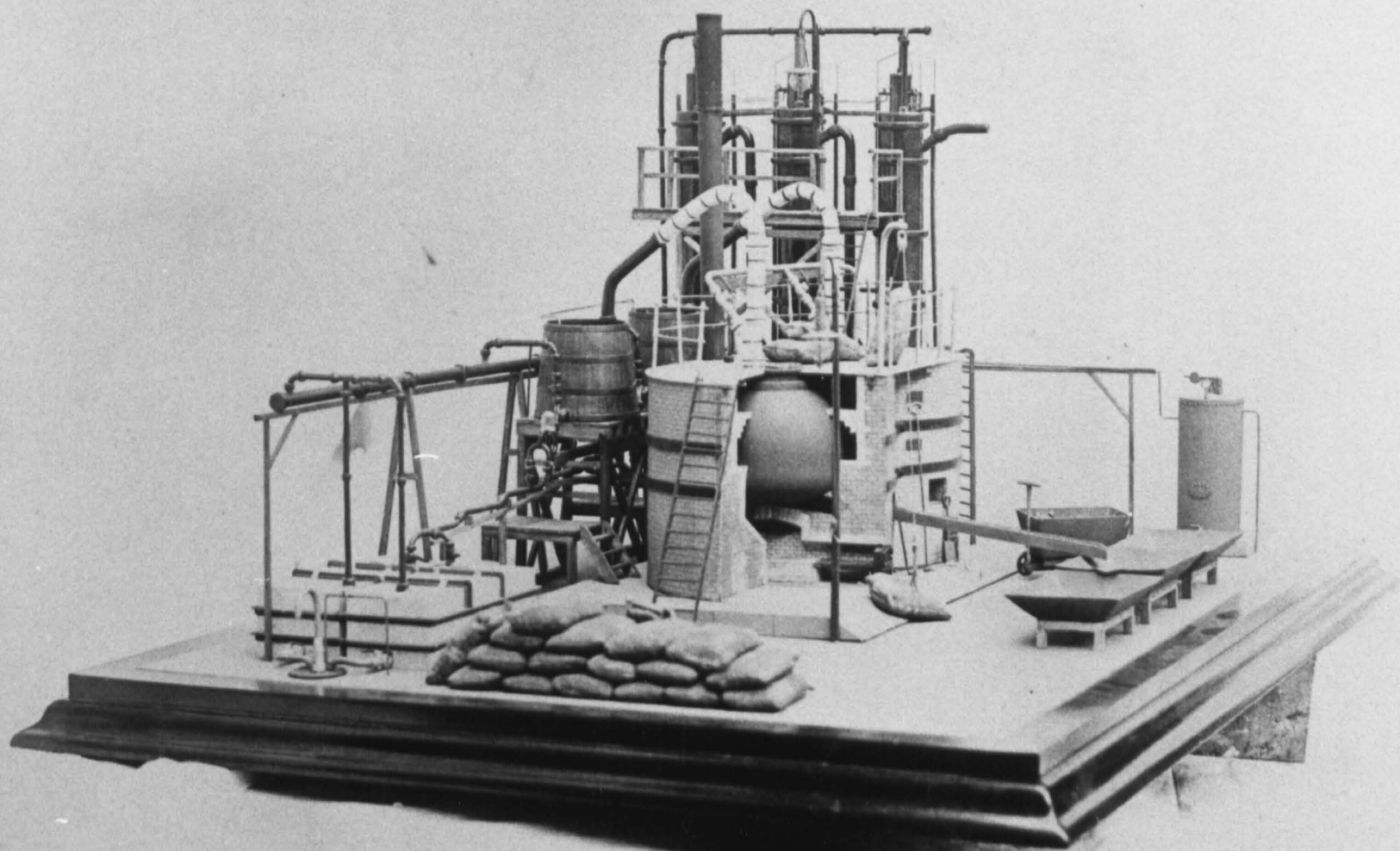








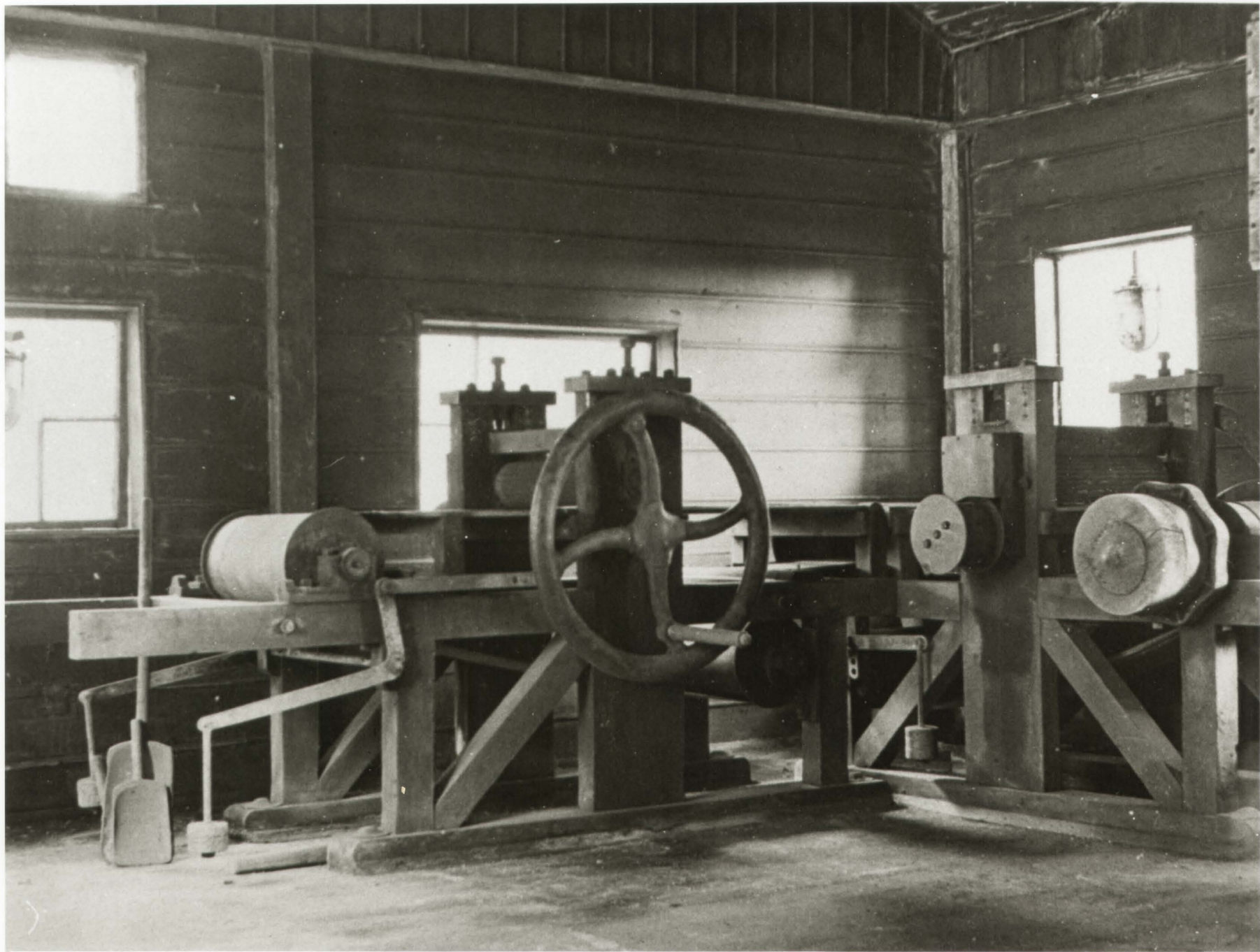




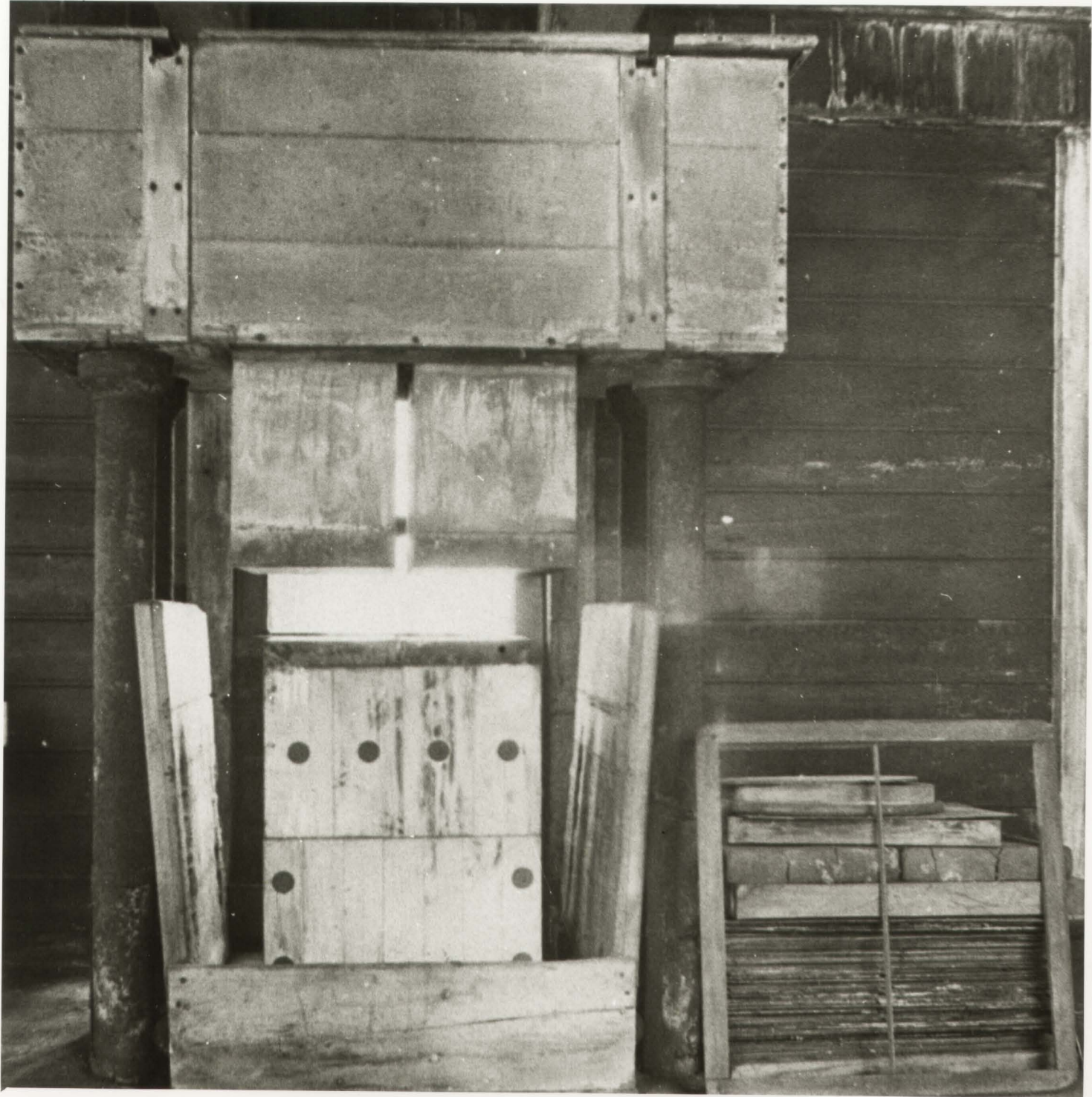








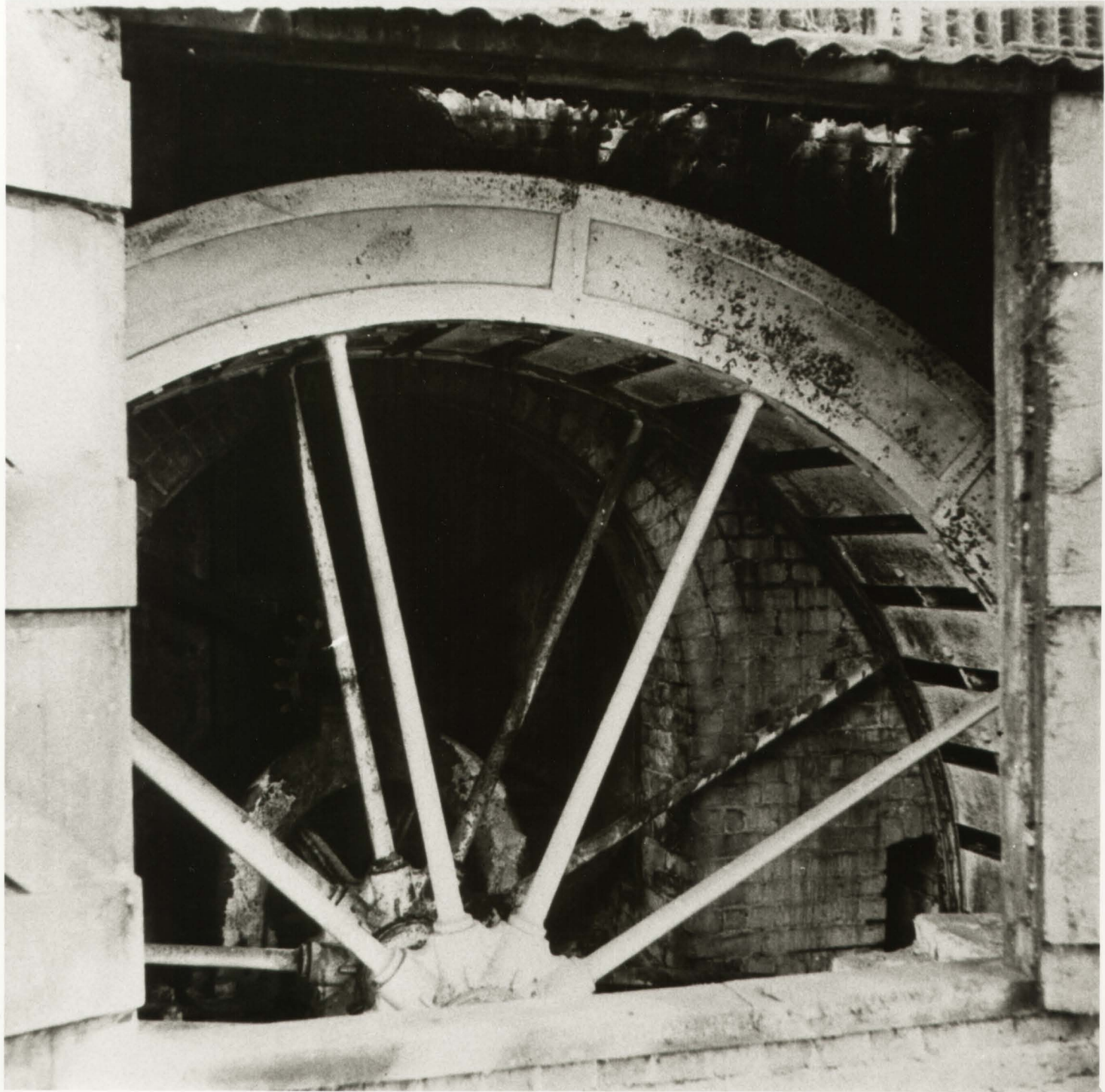








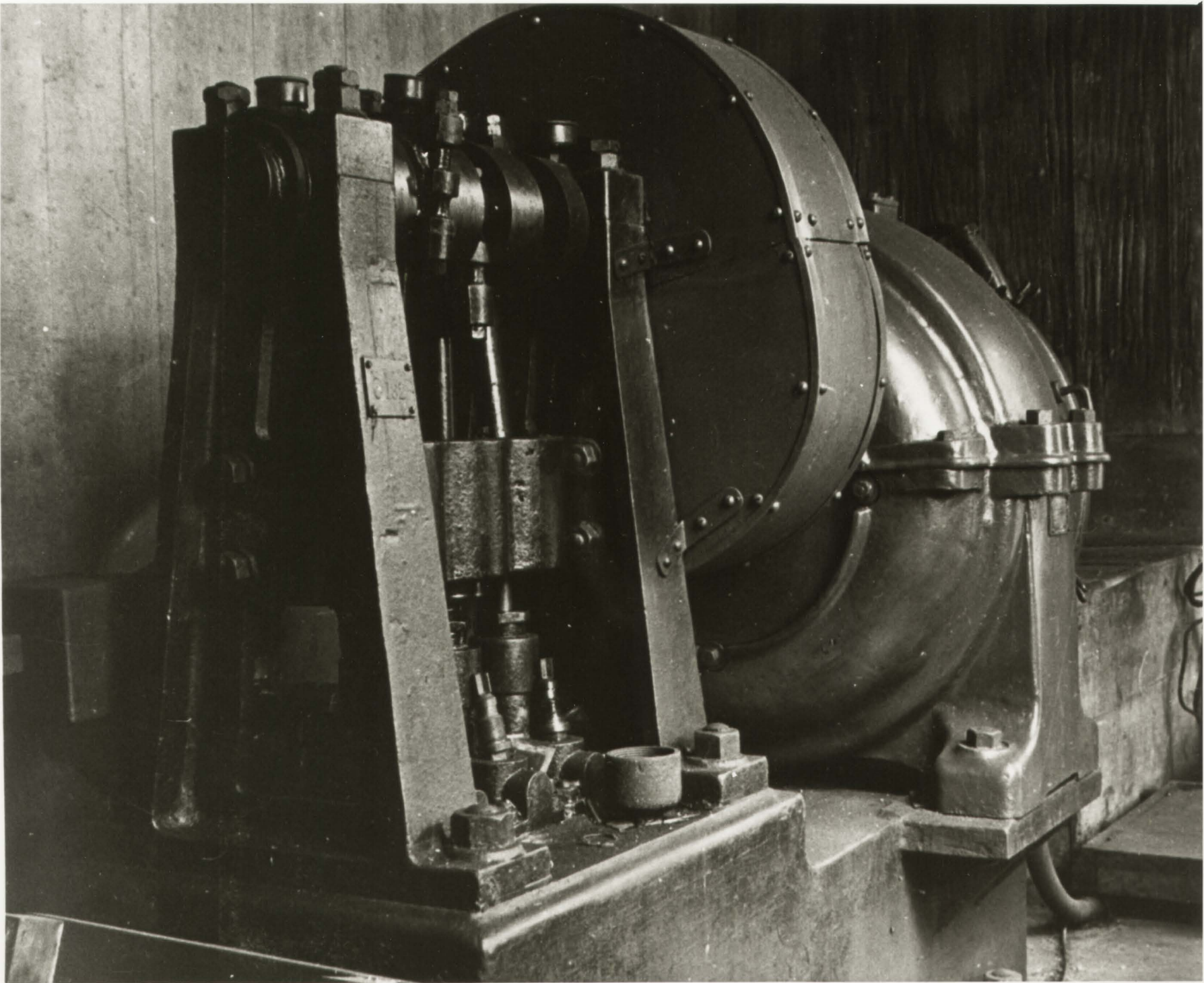




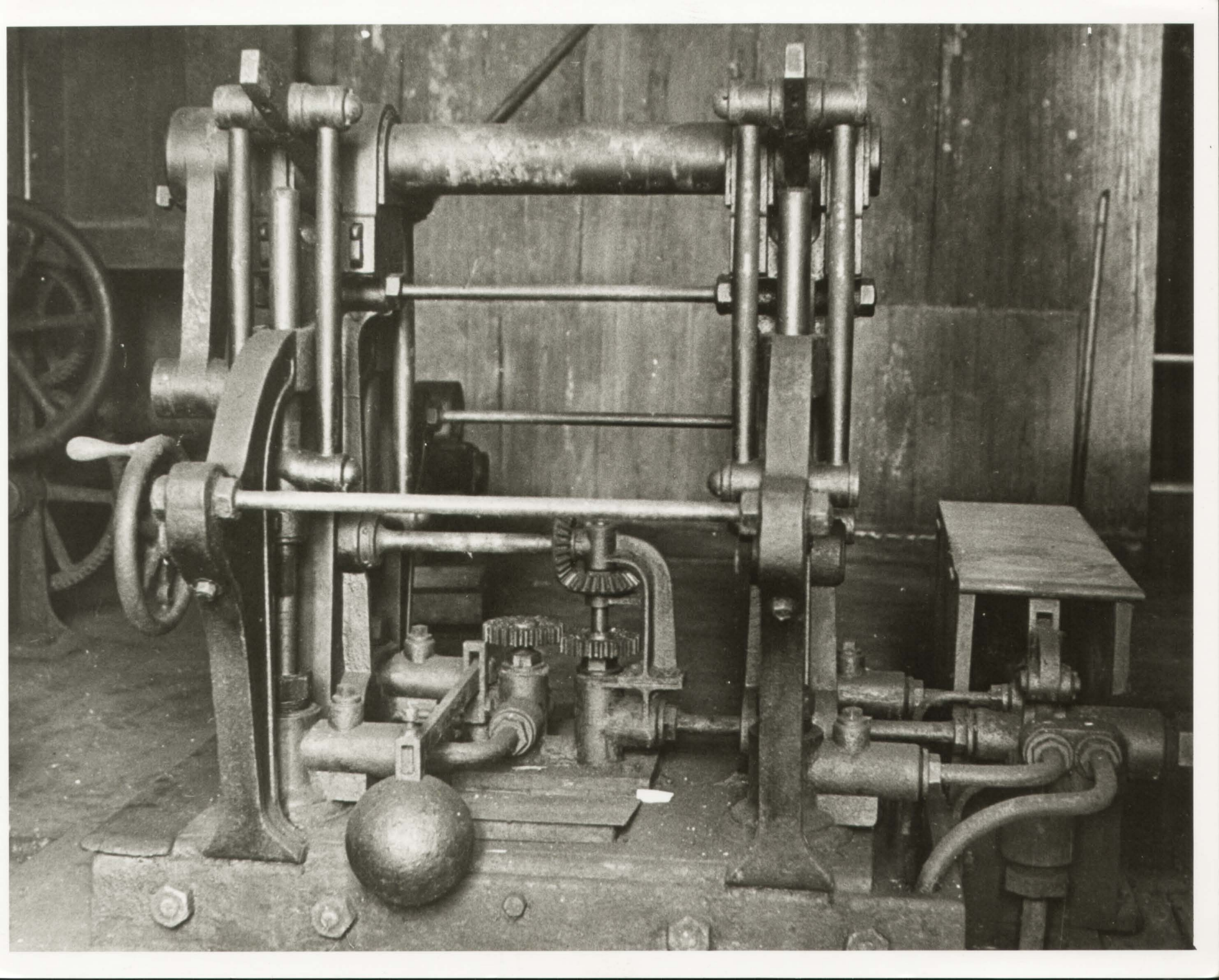
















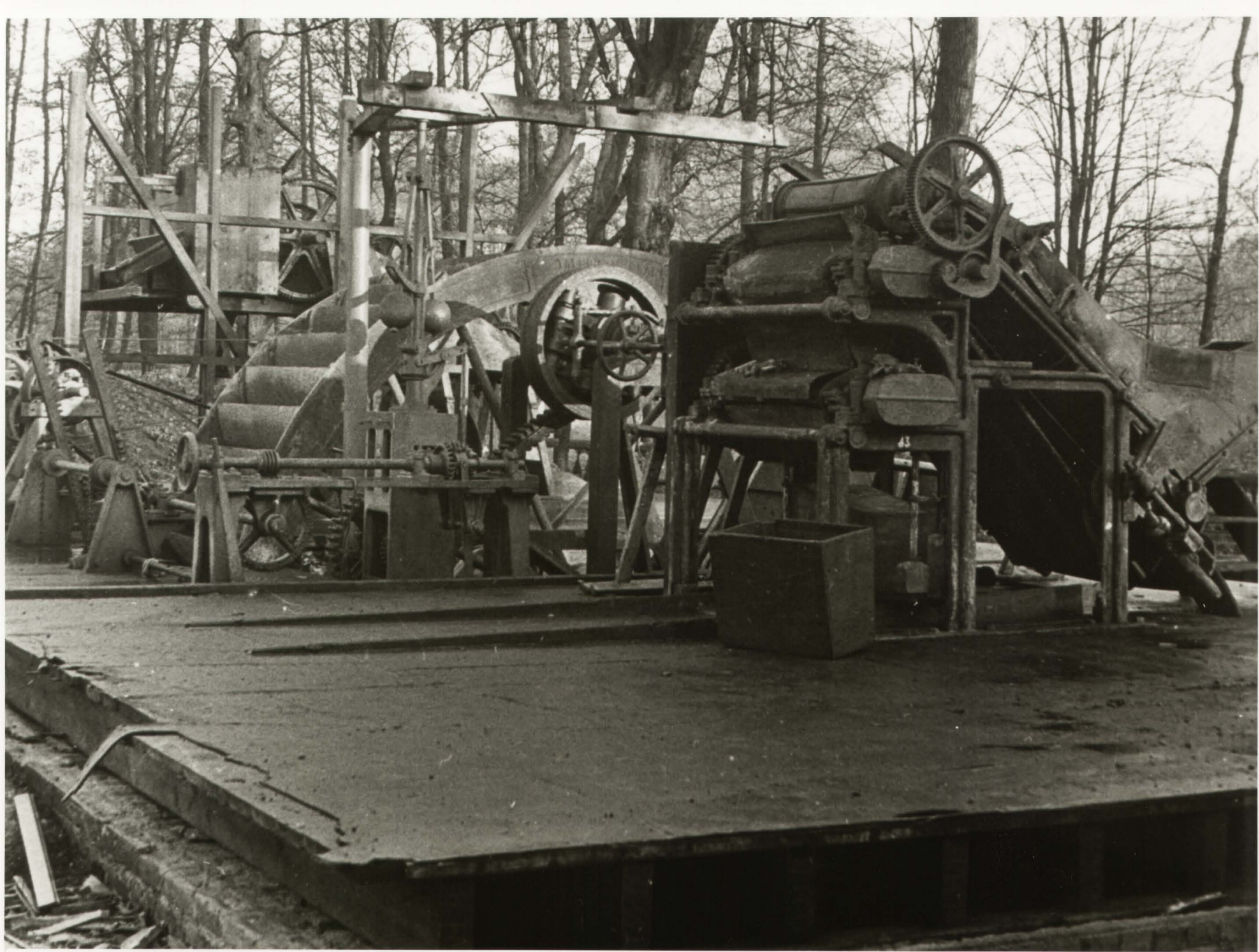




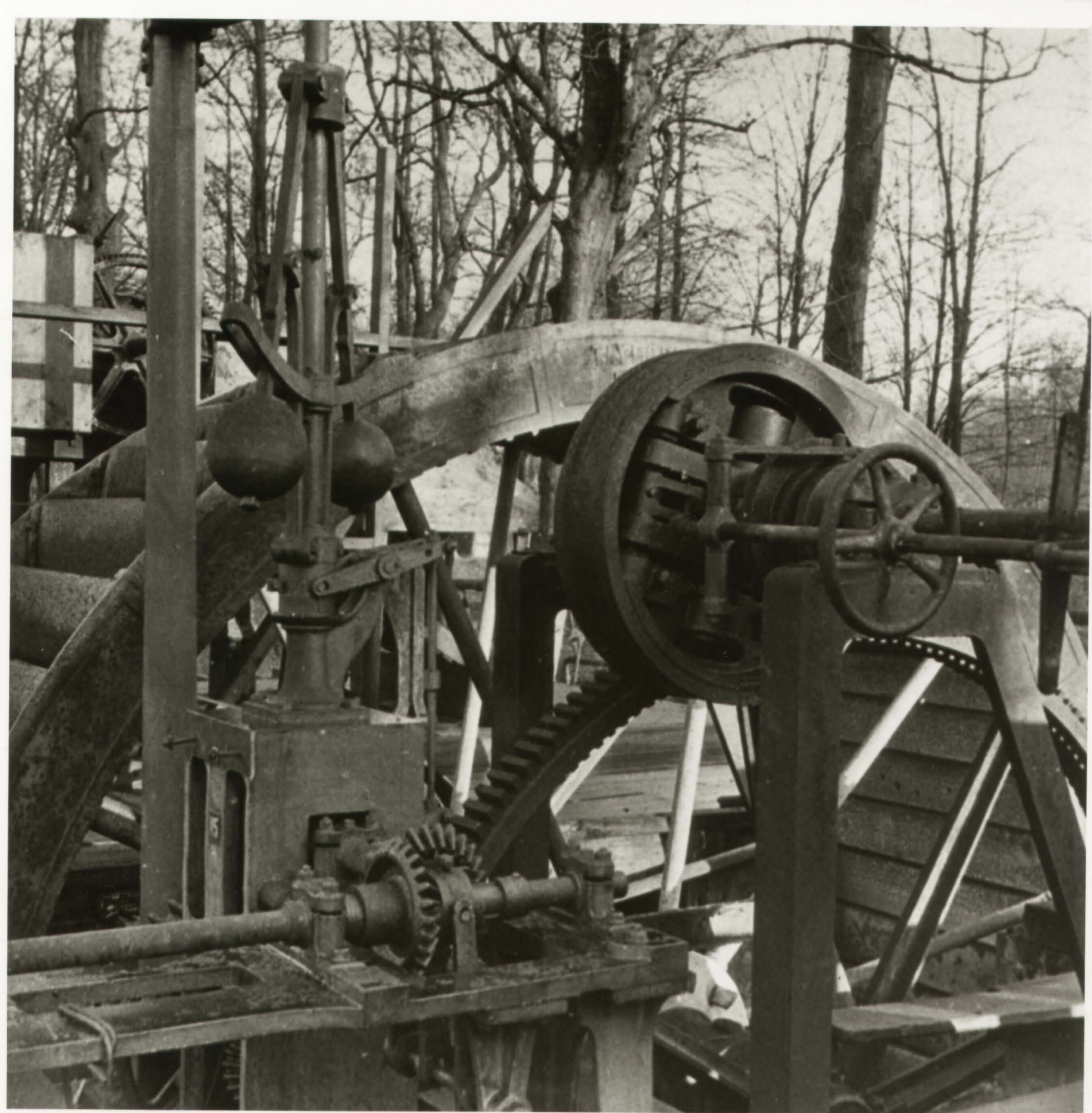












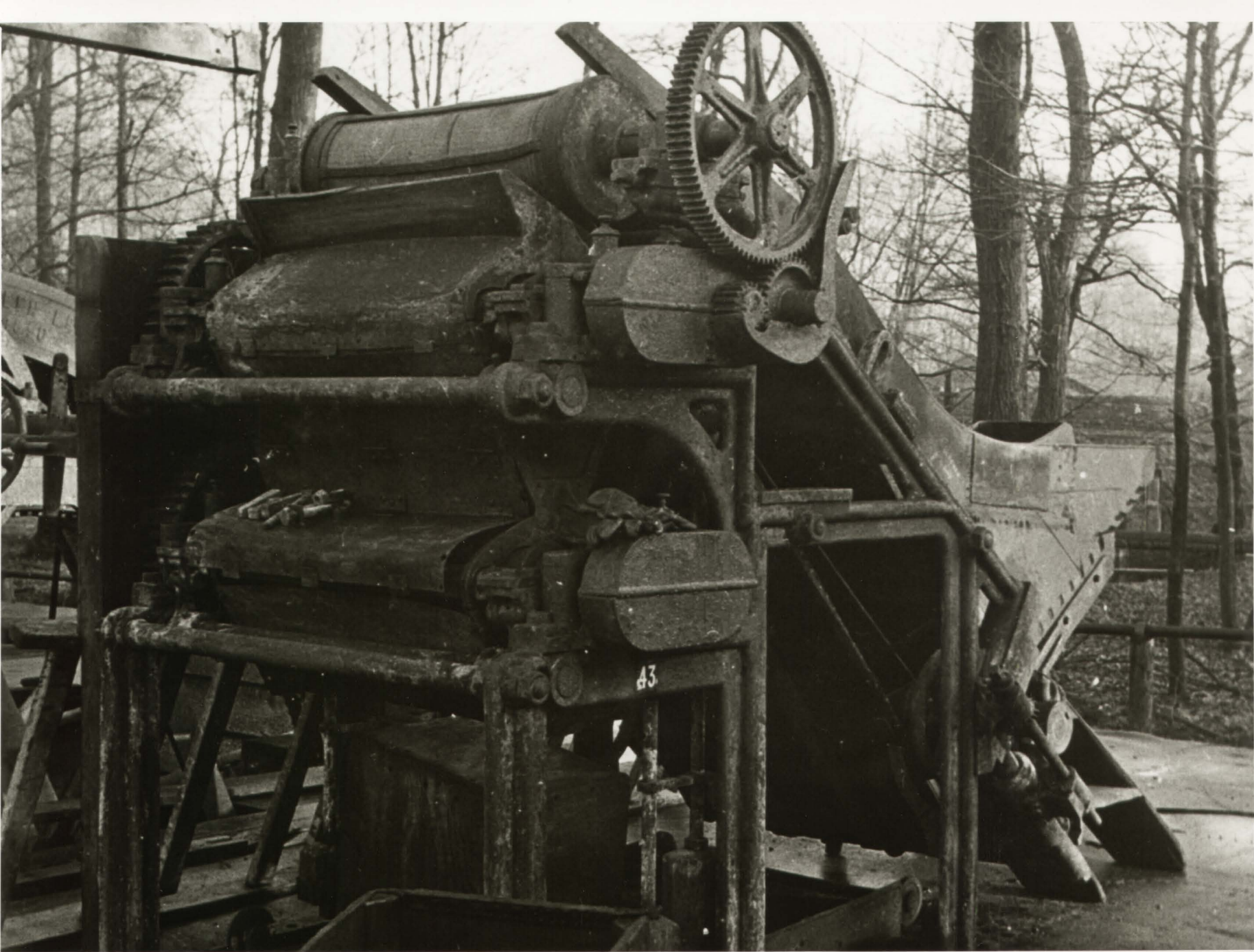




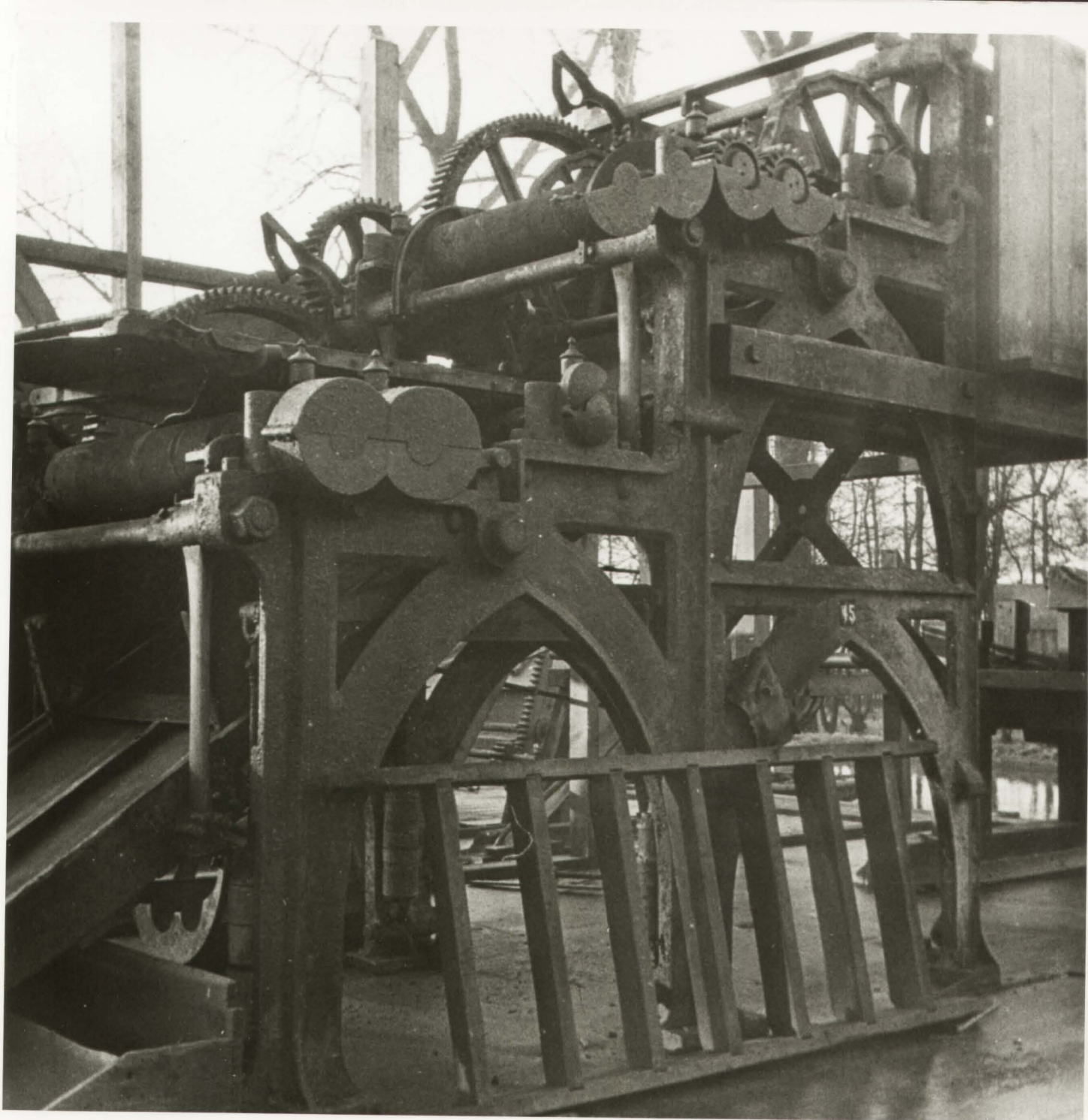




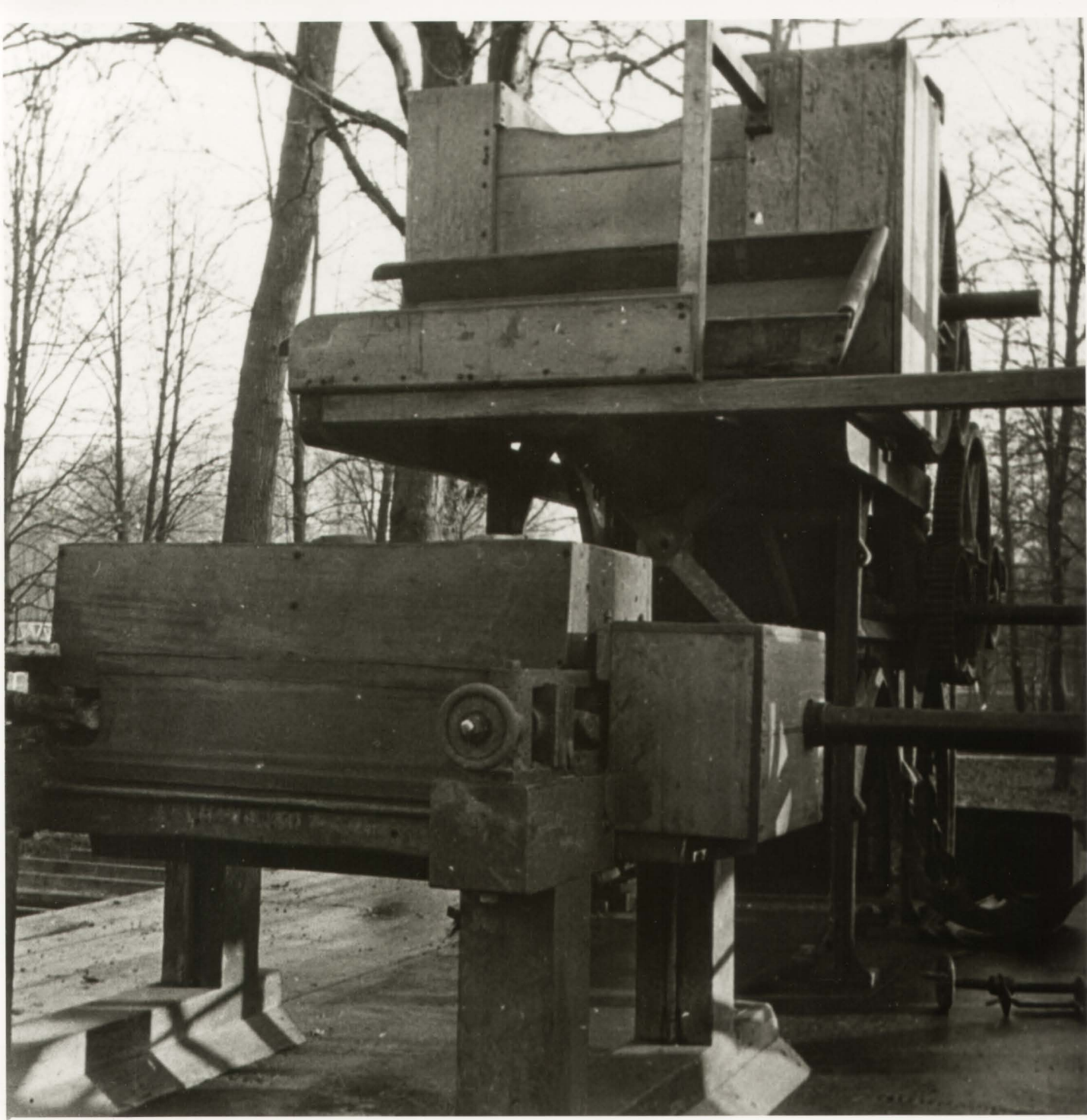
















*Women Workers*

*during*

*The Big War*





*Women Workers*  
*during*  
*The Big War*



## **Women**

**were drawn on for**

**labour during World War I,**

**as the male labour force became insufficient.**

**They were found "satisfactorily employed**

**on such work as stoking, wheeling in**

**coal, work in nitroglycerine,**

**labouring...mixing concrete, etc."**

**- PH Evans Supt. RGPF, Waltham Abbey Records, 16. 1. 1919**

936



**Upon arrival at work, employees donned leather overshoes or exchanged their own footwear for felt-soled boots.**

**When spotted outside the Factory, their measured, non-sparking plod came to be a means of identifying their place of employ!**

936

To reduce the menace of sparks,  
leather clothing and coverings  
were used. Nearly all the  
leather work required was  
carried out in the Royal  
Gunpowder Factory workshop.

936

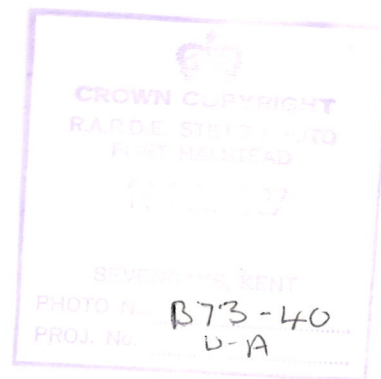




WASC 1655/1

wasc-0443-01 - wasc-1655-01

Supply S/860  
No 10 Mill Lower Island  
exploded 17 January 1861  
with a charge of 50 lbs of  
Enfield Powder.  
Original Print No 1  
Fort Halstead Photo No B73/38



WASC 1655/2

wai-0443-02-wasc-1655-02

Supply 5/860  
No 10 Mill Lower Island  
exploded 17 January 1861  
with a charge of 50 lbs of  
Enfield Powder  
Original Print No 2  
Fort Halstead Photo No B73/40





WASC 1655/3

wai-0443-03<sup>(1)</sup> - walc-1655-03(1).

Supply 5/860  
No 10 Mill Lower Island  
exploded 17 January 1861  
with a charge of 150lbs of  
Enfield Powder.  
Original Print No 3  
Fort Halstead Photo No 873/39

1655/  
WASC 443/4

WAI 443/4  
43.

Gp A Explanation

27-5-1861

Supp 5/860

wai-443-4-wasc-1655-4



CROWN COPYRIGHT  
R.A.S. & SONS PHOTO  
FORT HALSTEAD  
1923  
SCIENCE PHOTO  
PHOTO No. B73-42  
PROJ. No. W-A

WASC 1655 / 5

wai-0443-05-wasc-1655-05

Supply 5/860  
Explosion of No 1 Breaking  
down House on 22 August  
1890 - Position of House  
showing Tail Stream (North West)  
Original Print No 25  
Fort Halstead Photo No B73/42

WASC 1655/6

wai-0443-06(1) - wasc-1655-06(1)

  
 CROWN POINT  
 RABBIT  
 FORT  
 1937  
 SEVENDAYS, KENT  
 PHOTO No. B73-43  
 PROJ. No. W-A

Supply 5/860  
 Explosion of No1 Breaking  
 down House on 22 August  
 1890 - Ruins as seen from  
 traverse (North)  
 Original Print No 31  
 Fort Halstead Photo No B73/43



  
CROWN COPYRIGHT  
R.A.R.D.E. SP. S. PHOTO  
FORT HALSTEAD  
1912/13  
SEVENOAKS, KENT  
PHOTO NO. B73-44  
PROJ. NO. U-A

WASC 1655/7

wa) - 0443 - 02 - wasc - 1655 - 07

Supply 5/860  
Explosion at Nitro-Glycerine  
Factory on 7 May 1894 -  
Washing House (North)  
Original Print No 62  
Original Neg No A14  
Fort Halstead Photo No B73/44



WASC 1655/8

wai-0443-08-wasc-1655-08

Supply 5/860  
Explosion at Nitro-Glycerine  
Factory on 7 May 1894 -  
Reeling House.  
Original Print No 67  
Original Neg No A19  
Fort Halstead Photo No B73/46





WASC 1655/9

wai-0443-09-wasc-1655-09<sup>(1)</sup>

Supply 5/860  
Explosion at Nitro-Glycerine  
Factory on 7 May 1894 -  
Wash Water Settling House  
Original Print No 618  
Original Neg No A20  
Fort Halstead Photo No B73/45

  
CROWN COPYRIGHT  
R.A.D.E. STILLS PHOTO  
FORT HALSTEAD  
19 10 1897  
SEVENOAKS, KENT  
PHOTO No. B73-47  
PROJ. No. W-A

WASC 1655/10

wai - 6443-10(1) - wasc-1655-10(1)

Supply 5/860  
Nighting House Edmonson (sw)  
1897  
Original Print No 90  
Original Neg No A39  
Fort Halstead Photo No B73/47



W.A.S.C. - 11 - W.A.S.C. - 1655-11

  
CROWN COPYRIGHT  
RARE PHOTO  
FOOT PRINT  
1914/15  
BEVENDOKS, KENT  
PHOTO No. B73-48  
PROJ. No. W-A

Newton's Pool  
1897

WASC 1655 / 11

WASC 1655/12 - 1270 - 1270 - 1270

  
 CROWN COPYRIGHT  
 R.A.D.E. SERIES PHOTO  
 FORT HALSTEAD.  
 19 MAY 1957  
 SEVENOAKS, KENIT  
 PHOTO No. B73-49  
 PROJ. No. W-A

WASC 1655/12

Supply 5/860  
 Group B Mills Lower Island  
 Showing railway on the  
 western edge of Group B.  
 Looking North North East  
 Original Print No 120  
 Original Neg No 210  
 Fort Halstead Photo No B73/49



WASC 1655/13

CROWN COPYRIGHT  
RASDF 127 1950  
FORT HALSTEAD  
11.12.27  
SEVENONS REEF  
PHOTO No. B94/4  
Exp. No. W/A

Supply S/860  
Group G Exploded 15.12.1902  
by 1571bs of M.D. Cordite  
Paste in Incorporating Machine  
in No 3 Bay - Bay 3 and  
Engine House Group G  
Original Print No 140  
Original Neg No B26  
Fort Halstead Photo No B94/4

Wai-0443-13(1) - WASC-1655-13(1)

WASC 1655/14 - 148 - 14 - WASC - 1655/14



WASC 1655/14

Supply 5/860  
Group G Exploded 15.12.1902  
by 157lbs of M.D. Cordite  
Paste in Incorporating Machine  
in No 3 Bay - Group G  
Bays 4, 5, 6. Back view  
Original Print No 145  
Original Neg No B30  
Fort Halstead Photo No B73/51



WASC 1655/15

wai-0443-15-wasc-1655-15

157-



W91 - 0443 - 16 - W91C - 1655 = 16

WASC 1655/16

Supply 5/861  
 No 2 Glycerine charge House <sup>QH</sup>  
 1903  
 Original Print No 157  
 Original Neg No B 38  
 Fort Halstead Photo No B73/1





WASC 1655/17

W41-9443-17-WASC-1655-17

Supply 5/861  
Front view of Group H  
May 10, 1904  
Original Print No. 215  
Original Neg No. A68  
Fort Halstead Photo No B73/2

  
CROWN COPYRIGHT  
R.A.D.E. SIPLE'S PHOTO  
FORT HALSTEAD  
19 JULY 1987  
SEVENOAKS, KENT  
PHOTO No. B73/3  
PROJ. No. W/A

WASC 1655/18

wai-0443-18-wasc-1655-18

Supply 5/861  
View of Group E Showing  
Traverse.  
May 10, 1904.  
Original Print No 217  
Original Neg No. 395.  
Fort Halstead Photo No B73/3.

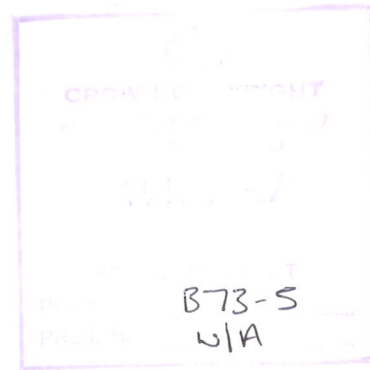


WASC

1655/19

wai-0443-19-wasc-1655-19

WAS-0443-28-WASC-1655-20



WASC 1655 / 20

Supply 5/861  
Erection of Stoves - Cob Mead.  
1904.  
Original Print No 221.  
Fort Halstead Photo No B73/5



CROWN POINT  
RAILROAD  
FORT HALSTREED  
1917  
SEVEN POINT  
PHOTO NO. B73-6  
PROJ. NO. W/A

WASC 1655/21

wai-044321-wasc-1655-21

Supply 5/861  
Erection of Magazine -  
Cob Mead  
1904  
Original Print No 222.  
Fort Halstead Photo No B73/6



WASC 1655/22

wai - 0443-22 - wasc - 1655-22

Supply 5/861  
Old Dining Hall near Main Office  
May 1908.  
Original Print No 244.  
Original Neg No 8154  
Fort Halstead Photo No 873/7





WASC 1655/23

wai-0443-23<sup>(1)</sup> - wasc-1655-23(1)

Supply 5/861  
Gurcofton Displacement Apparatus  
May 1909.  
Original Print No 254  
Original Neg No B166  
Fort Halstead Photo No B73/8

CROWN POINT  
RARE PHOTO  
FOOT  
10 25 27  
PHOTO No. B73/9  
PROJ. No. WIA

WASC 1655 / 24

wai-0443-24-wad-1655-24

Supply 5/861  
Beaters and Poachers, Gunston.  
Original Print No 259  
Original Neg No B167  
Fort Halstead Photo No B73/9.



WASC 1655 / 25

  
CROWN COPYRIGHT  
R.A.D.E. ST. PHOTO  
FORT HALSTEAD  
15 JUL 1917  
SEVENDAKS, KENT  
PHOTO No. B73/10  
PROJ. No. W/A

wai-0443-25(1)-wasc-1655-25(1)

Supply 5/861  
Women Stokers  
July 1917  
Original Print No 311.  
Original Neg No B230.  
Fort Halstead Photo No B73/10.

Wai-443-26(1)-WASC-1655-26(1)

WASC 1655/26

CROWN COPYRIGHT  
R.A.D.E. ST. JOHN'S TB  
FORT HALSTEAD  
19 1917  
SEVENOAKS MONT  
PHOTO NO. B73/11  
PROJ. NO. W/A

Supply 5/861.  
Incorporating House Cordite  
July 1917  
Original Print No 312  
Original Neg No B231.  
Fort Halstead Photo No B73/11





WASC 1655/27

wai-0443-27(1)-wasc-1655-27(1)

Supply 5/861  
Small Press House Cordier  
July 1917  
Original Print No 313  
Original Neg No B232  
Fort Halstead Photo No B73/12

CORDITE PRESSING.

- |                     |   |                  |   |                            |
|---------------------|---|------------------|---|----------------------------|
| 1.                  | 2 | 3                | 4 | 6                          |
| MISS. A.<br>HOPKINS |   |                  |   | MRS TAYLOR<br>NÆ MANSFIELD |
|                     |   | 5.               |   |                            |
|                     |   | MISS K.<br>HALE. |   |                            |

INFORMATION GIVEN BY MR. W. HALE  
 BROOMSTICK HALL ROAD  
 WALTHAM ABBEY.

Mr. McLaren

The above refers to the photograph on show  
 at the Historical Society's exhibition 25-27 August  
 KN Bascombe.

3.9.73





WASC 1655/28

wai-0443-28<sup>(1)</sup> - wasc-1655-28(1)

Supply 5/861  
Large Press House Cordite.  
July 1917  
Original Print No 314  
Original Neg No B233,  
Fort Halkhead Photo No B73/13

See Spares for  
Identification

Supply 5/861

Women workers showing  
different types of dress.

July 1917.

Original Print No 315

Original Neg No B234

WASC 1655/29



CROWN COPYRIGHT  
R.A.R.D.E. SEVEN PHOTO  
FORT HALSTEAD  
19 MAY 1917  
SEVENDAKS MINT  
PHOTO No. B73/15  
PROJ. No. W/A

WASC 1655/30

wai-0443-30(1) - wasc-1655-30(1)

Supply 5/861  
Electric Tractor  
July 1917  
Original Print No 316  
Original Neg No B235.  
Fort Halstead Photo No B73/15.



WASC 1655/31

wai-0443-31(1)-wasc-1655-31(1)

Supply 5/861  
Oil Locomotive and Trucks  
July 1917  
Original Print No 317  
Original Neg No B236  
Fort Halstead Photo No B94/3



936

" Photograph of the  
Diesel " engine as  
used in

" Women workers  
in the big war "

was a Ruston & Hornsby  
(Lincoln) paraffin engine  
which was the forerunner of  
the Diesel.

Info. from WAC Richards 15.12.69  
passed on to Dr. G.H. Jones 15.12.69

WASC 1655/32



Supply 5/861  
G/C Store Letters  
July 1917  
Original Print No 315  
Original Neg No 3237  
Fort Halstead Photo No 873/16

wai-0443-32(1) - wasc-1655-32(1)



WASC 1655/33



wai-0443-33(1) - wasc-1655-33(1)

Supply S/861  
G/c Nitrating House  
July 1917  
Original Print No 319  
Original Neg No B238  
Fort Halstead Photo No B73/18

WASC 1655/34

wai-0443-34(1) - wasc-1655-34(1)



Supply 5/861  
G/c Boiling House  
July 1917  
Original Print No 320  
Original Neg No B239  
Fort Halstead Photo No B73/20



WASC 1655/35

July 1917 - Cotton  
Pulping Machines

wai-0443-35(4) -wasc-1655-35(4)

Guncotton moulding

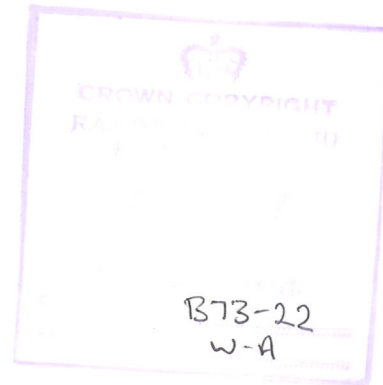


WASC 1655 / 36

wai-0483-36(1) - wasc-1655-36(1)

Supply 5/861  
G/c Moulding Machines.  
July 1917  
Original Print No 322  
Original Neg No B241.  
Fort Halstead Photo No B73/21





WASC 1655/37

wai-0443-37(1)-wasc-1655-37(1)

CROWN COPYRIGHT  
RAILWAY PHOTO  
FOOTAGE  
19 MAY 1987  
SEVENOAKS, KENT  
PHOTO No. B73-24  
PROJ. No. W-A

WASC 1655/38

wai-0443-38(1)-wasc-1655-38(1)

Supply 5/861  
Women Workers Salt Petre Refinery  
October 1917  
Original Print No 324  
Original Neg No 243  
Fort Halstead Photo No B73/24



WAI-0443-39(1) - WASC-1655-39(1)

WASC 1655/39



Supply 5/861  
Types of dress for slightly wet  
and very wet work.  
October 1917  
Original Print No 325  
Original Neg No 244  
Fort Halstead Photo No B73/23

WASC 1655/40

B94/1  
L/A

Supply 5/861  
Oil Locomotive and Trucks.  
Original Print No 326  
Fork Halshead Photo No B94/1  
(Looking North).

wai-0443-40(1)-wasc-1655-40(1)



CROWN COPYRIGHT  
R.A.D.E. ST. PHOTO  
FORT HALSTEAD  
19 MAY 1957  
SEVENOAKS KENT  
PHOTO No. B73-26  
PROJ. No. W-A

WASC 1655 / 41

wai-0443-41(1)-wasc-1655-41(1)

Supply 5/861  
Oil Locomotive and Trucks  
on bridge crossing Millhead  
Stream near Sandhurst Hospital  
Looking North  
Original Print No 327  
Fort Halstead Photo No B73/26

**Please Return to:**  
Lindsay Berry - Marketing Manager  
Royal Gunpowder Mills  
Powdermill Lane  
Waltham Abbey  
Essex EN9 1BN

*Photo to be captioned:*



WASC 1655/42

wai-6443-42(1)-wasc-1655-42(1)

Supply 5/861  
Oil Locomotive and Trucks  
Looking North  
Original Print No 328  
Font Halstead Photo No B94/2



Scan &  
return

④



WASC 1655/43

waj-0443-43(1)-wasc-1655-43(1)

Supply 5/861  
Oil Locomotive and Trucks  
Looking North towards  
Refinery Bridge in Highbridge st  
Original Print No 329  
Fort Halstead Photo No B73/27

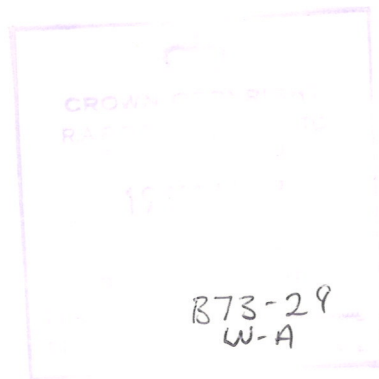
CROWN  
RADIUM  
SERIAL NO. 11287  
PHOTO NO. B73-28  
POOL NO. W-A

WASC 1655/44

wasc 443-44<sup>(1)</sup> / wasc-165544(1)

Supply 5/861  
Oil Locomotive and Trucks,  
Looking North East  
Original Print No 330,  
Fort Halstead Photo No B73/28





WASC 1655/45

Supply 5/861  
Oil Locomotive and Trucks.  
Looking North.  
Original Print No 331.  
Fort Halstead Photo No B73/29

wai-0443-45(1) - wasc-1655-45(1)

May 1918

  
CROWN COPYRIGHT  
R.A.P.D.E. STILLS PHOTO  
FORT HALSTEAD  
19 MAY 1937  
SEVENOAKS, KENT  
PHOTO No. B73-30  
PROJ. No. W-A

WASC 1655/46

Wai-0443-469-wasc-1655-46



CROWN COPYRIGHT  
RARE STEEL PHOTO  
FORT HALSTEAD  
10 MAY 1918  
SERIALS, KF 11  
PHOTO NO. 873-31  
PROJ. NO. W-A

WASC 1655/47

wai-0443-47(1) -warc-1655-47(y)

Supply 5/861  
Fire Brigade Quinor Hill  
May 1918.  
Original Print No 342  
Original Neg No B256  
Fort Halstead Photo No 873/31



R C P F  
1918

WASC  
1655/47

1 1 M. Toole H. Wade Brown L. Smith Waters Bonnie  
1 2 3 4 5 6 7 8

M. TOOLE H. WADE BROWN L. SMITH T. WATERS EMMIE - ?



1655/48

MISSING

Air Raid Shelters

WASC 1655/49

  
CROWN COPYRIGHT  
R.A.R.D.E. STILL'S PHOTO  
FORT HALSTEAD  
19 MAY 1987  
SPVENOAKS, KENT  
PHOTO No. B73-33  
PROJ. No. W-A

wai-0443-49-wasc-1655-49

Supply 5/861  
c/E Water Purification  
25 April 1919  
Original Print No 349  
Original Neg No A99  
Fort Halstead Photo No B73/33

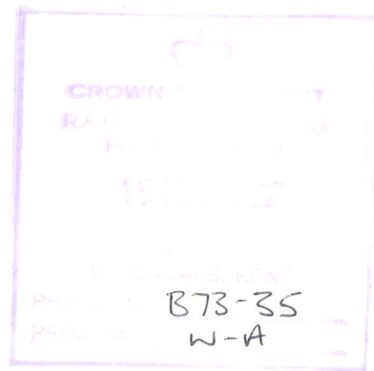


WASC 1655/50

CROWN COPYRIGHT  
RARE  
15 MAR 1937  
85, 7 HT  
B73-34  
W-A

wai\_0443-50\_wasc-1655-50

Supply 5/861  
c/E Sieving House  
23 April 1919.  
Original Print No 350  
Original Neg No A100  
Fort Halstead Photo No B73/34



WASC 1655/51

wai-0443-51-wasc-1655-51

Supply 5/861  
G/C Pulping Machine  
for India  
5 May 1921  
Original Print No 354  
Original Neg No A104  
Fort Halstead Photo No B73/35





WASC 1655/52

wai-0443-52-wasc-1655-52

Supply 5/861  
"Cub" Grubbing Crane  
Original Print No 380  
Original Neg No 5614  
Fort Halstead Photo No B73/36



WASC 1655/53

wai-443-53, wasc-1655-53

Supply 5/861  
"Cub" Grabbing Crane  
Original Print No 882  
Original Neg No 5616  
Fort Halstead Photo No B73/37





WASC 1655/54

wai-0443-54-wasc-1655-54

Supply S/862  
Model of Plant in use at the  
Royal Gunpowder Factory,  
exhibited in the Brussels  
Exhibition 1910 - Destroyed by fire  
- Acetone Recovery Plant  
Original Print No 72  
Fort Halstead Photo No B73/53



WASC 1655/55

wai - 0443-55 - wasc - 1655-55

Supply 5/862  
Model of Plant in use at  
The Royal Gunpowder Factory,  
exhibited in the Brussels  
Exhibition 1910 - Destroyed by  
Fire - Gunpowder Displacement Plant  
Original Print No 73  
Fort Halstead Photo No 873/56



WASC 1655/56 - photo - 1655

CROWN COPYRIGHT  
R.A.D.E. S. 1910  
FORT HULSTEAD  
1910  
SEVENOAKS, KENT  
PHOTO No. B73-54  
PROL No. W-A

WASC 1655/56

Supply 5/862  
Model of Plant in use at The  
Royal Gunpowder Factory,  
exhibited in The Brussels  
Exhibition 1910 - Destroyed  
by Fire - Nitroglycerine  
Factory  
Original Print No 74  
Fort Hulstead Photo No B73/54



WASC 1655/57

wai-0443-57-wasc-1655-57

Supply S/862  
Model of Plant in use at The  
Royal Gunpowder Factory,  
exhibited in The Brussels  
Exhibition 1910 - Destroyed  
by Fire - Nitric Acid Plant.  
Original Print No 75  
Fort Halstead Photo No. B73/55



  
CROWN COPYRIGHT  
R.A.R.D.E. STILLS PHOTO  
FORT HALSTEAD  
19 MAY 1937  
  
SEVENOAKS, KENT  
PHOTO No. B73-57  
PROJ. No. U-A

WASC 1655/58

Supply 5/863  
Gunpowder No 1 Press House  
July 1940  
General view.  
Original Neg No 290  
Fort Halstead Photo No B73/57

(01)  
wai-0443-58-wasc-1655-58(01)

CROWN POINT  
R.A.D.E. ST. PHOTO  
FORT HALSTEAD  
1911/12/27  
SEVENOAKS, KENT  
PHOTO No. B73-58  
PROJ. No. U-A

WASC 1655/59

wai-0443-59-wasc-1655-59

Supply 5/863  
Gunpowder No1 Press House  
July 1940  
Pebble Cutting Machine  
Original Neg No 291  
Fort Halstead Photo No B73/58



719  
CROWN EIGHT  
R... PHOTO  
... LEAD

15 JAN 1937

SEVENOAKS  
PHOTO No. R73-59  
PROJ. No. W-1A

PHOTO I  
PROJ. 1  
B73-60  
W-A

WASC 1655/61

Supply 5/863  
Gun powder No 1 Press House  
July 1940  
Side view of Press  
Original Neg No 295  
Fort Halstead Photo No B73/60

wai-8443 -61-wasc-1655-61



CROWN SAFETY  
PRINTED PHOTO  
1940  
SEVENOAKS KENT  
PHOTO No. B73-61  
PROJ. No. U-A

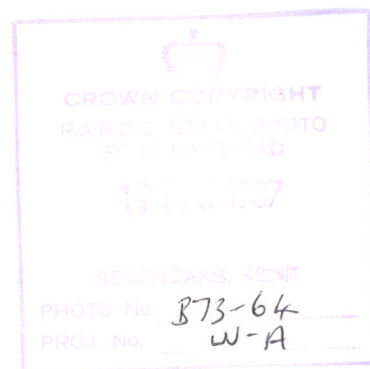
WASC 1655/62

wai-0443-62<sup>(1)</sup>-wasc-1655-62(1)

Supply 5/863  
Gunpowder No 1 Press House  
July 1940  
Water Wheel  
Original Neg No 296  
Fort Hatstead Photo No B73/61

WASC 1655/63

wai-6443-63<sup>(1)</sup>-wasc-1655/63(1)



Supply 5/863  
Gunpowder No 1 Press House  
July 1940  
Water wheel from inside  
Showing wheel for starting same  
Original Neg No 297  
Fort Halstead Photo No B73/64





WASC 1655/64

wai-0443-64<sup>(oil)</sup> - WASC-1655-64<sup>(oil)</sup>

Supply 5/863  
Gun powder No 1 Press House  
July 1940  
Pump for Press driven by  
Electric Motor  
Original Neg No 298  
Fort Halstead Photo No 873/63

DOWN POINT  
PHOTO NO. 873-62  
PROJ. NO. 4-4

WASC 1655/65

wai-0443-65<sup>(o)</sup>-wasc-1655-65(o)

Supply 5/863  
Gunpowder No 1 Press House  
July 1940  
Pumps for Press driven by  
Water Wheel  
Original Neg No 299 (299)  
Fort Halstead Photo No 873/62



99-5591-250M-99-5700-16M



Spare

WASC 1655/60

WASC 1655/67

CROWN POINT	
NOV 15 1940	
CROWN POINT	
PHOTO NO	373-66
PROJ NO	W-A

Supply S/863  
Damage caused by Parachute  
Bomb on November 15, 1940  
No 2 Reel Store  
View from N. West Corner of  
traverse.  
Looking South.  
Original Neg No 314  
Fort Halstead Photo No 373/66





Damage caused by  
Parachute Bomb on  
November 15, 1940.  
Damage to No. 4  
Gunpowder Mill  
Orig. Neg No. 316  
Fort Halstead Photo  
No. B73/67

WASC 1655/68



WASC 1655/69

wai-0443-69<sup>(ci)</sup> wasc-1655-69(ov)

Supply 5/863  
No 1 Breaking Down House  
January 1941  
General view looking N. East  
Original Neg No 221  
Fort Halstead Photo No. B73/68

W 91 - 0443-70 (a)  
WASC - 1655-70 (a)



WASC 1655/70

Supply 5/863  
No 1 Breaking Down House  
January 1941  
Water-wheel, clutch and  
gearing.  
Original Neg No 327  
Fort Halstead Photo No B73/70



CROWN POINT  
PHOTO NO. 873-69  
PROJ. NO. W-A

WASC 1655/71

wai-0443-71<sup>(1)</sup> - wasc-1655-71(1)

Supply 5/863  
No 1 Breaking Down House  
January 1941  
General view looking West  
Original Neg No 329  
Fort Halstead Photo No 873/69

WASC 1655-72  
101-0443-72  
101-0443-72  
101-0443-72



WASC 1655/72

Supply 5/863  
No 11 Breaking Down House  
January 1941  
Breaking Down Machine -  
Front view.  
Original Neg No 322  
Fort Halstead Photo No 873/72

CROWN POINT  
RARE PHOTO  
FORT HALSTEAD  
1941  
SEVEN  
PHOTO NO. B73-71  
FROM W-A

WASC 1655/73

wai-0443-73<sup>(01)</sup> / wasc-1655-73(01)

Supply 5/863  
No 1 Breaking Down House  
January 1941  
Breaking Down Machine —  
Back view  
Original Neg No 323  
Fort Halstead Photo No B73/71



CROWN POINT  
REPORT NO. 120  
SERIES 100  
PHOTO NO. B73-74  
PROJ. NO. W-A

WASC 1655/74

Supply 5/863  
No 1 Breaking Down House  
January 1941  
Granulating Machine  
Original Neg No 325  
Fort Halstead Photo No B73/74

(01)  
wasc 443-74 (01) / wasc-1655-74 (01)

Wai-0443-75  
WASC-1655-75 (01)

B73/73  
W-A

WASC 1655/75

Supply 5863  
No 1 Breaking Down House  
January 1941  
Granulating Machine (back view)  
with crushing machine.  
Original Neg No 326  
Fort Halstead Photo No B73/73