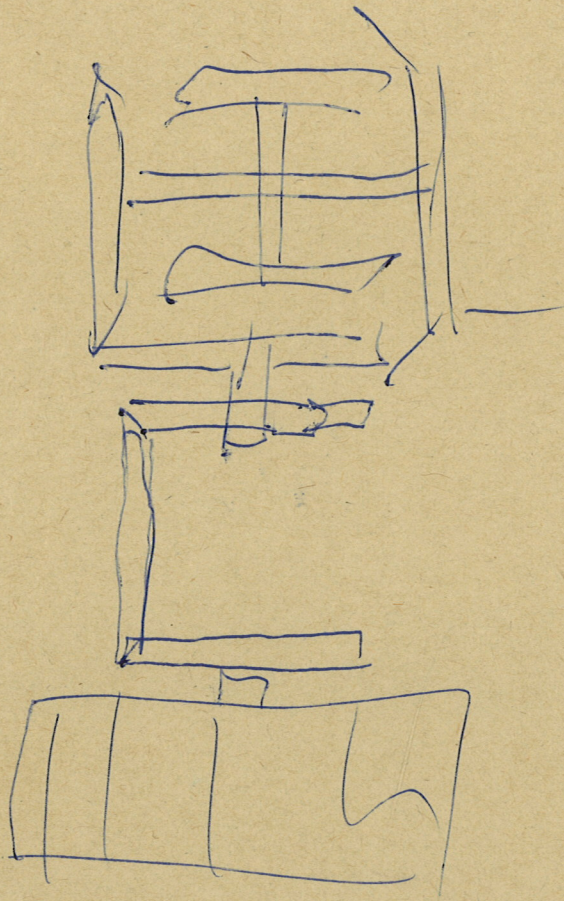


ON HER MAJESTY'S SERVICE

WASC 1480

1480.

Smeaton's Mill



MAC

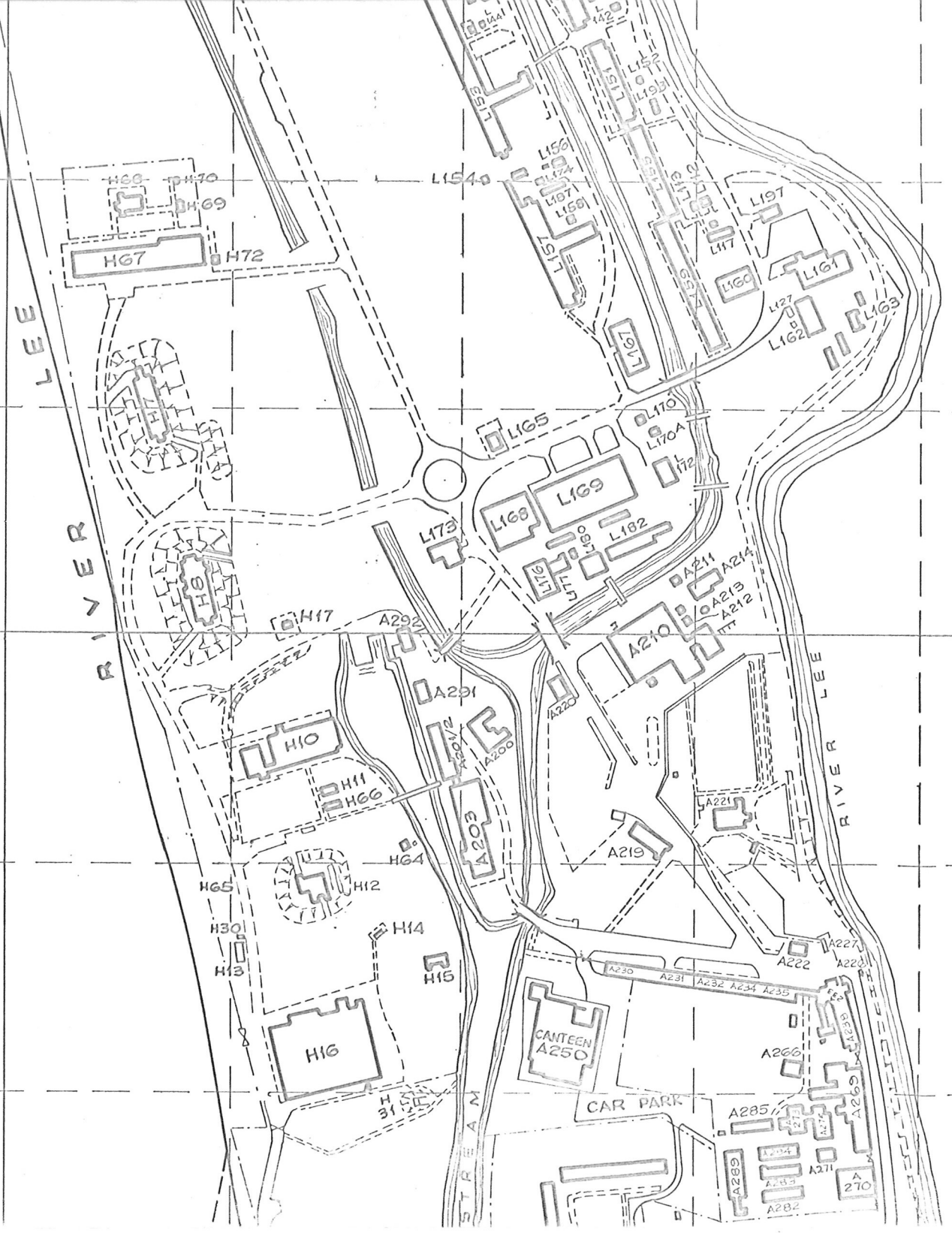
24.4.53

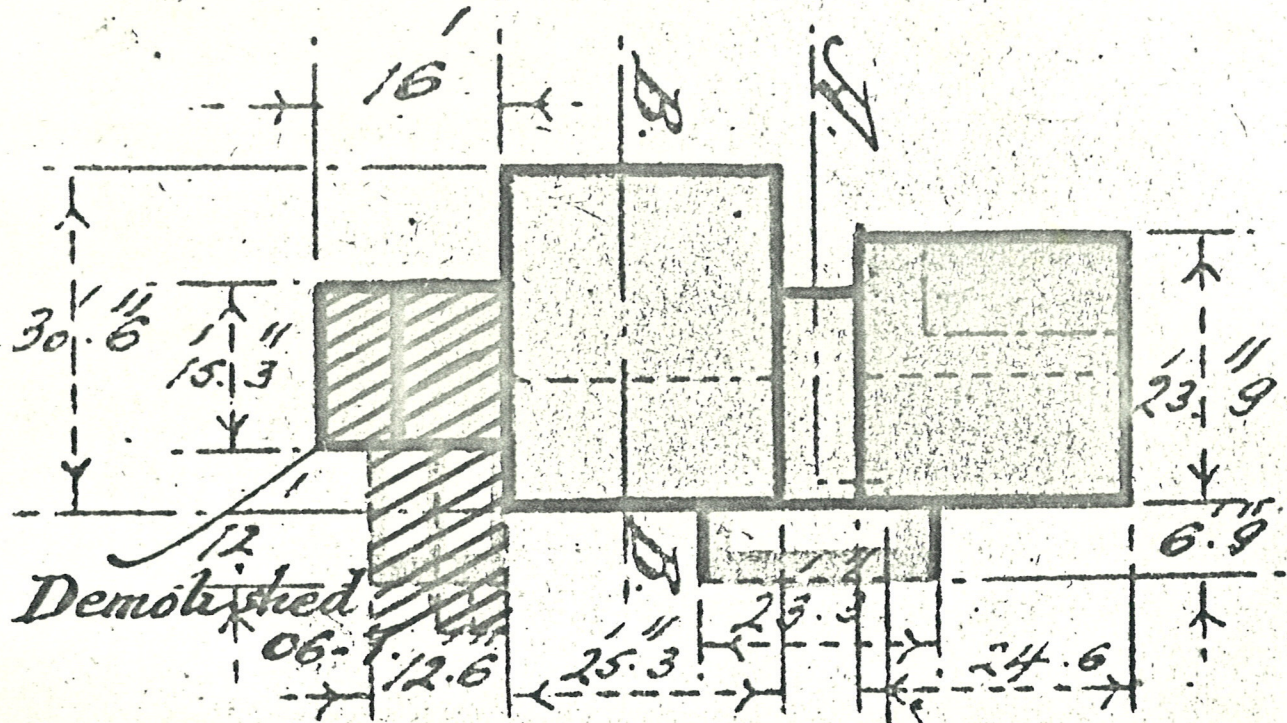
MR EVANS D/O

PHONED TO SAY THAT
THE BUILDING 197, A
CHARCOAL MILL, WAS BUILT
BEFORE 1783 AND WAS
PARTLY DEMOLISHED IN
ABOUT 1906 - 1907

RC

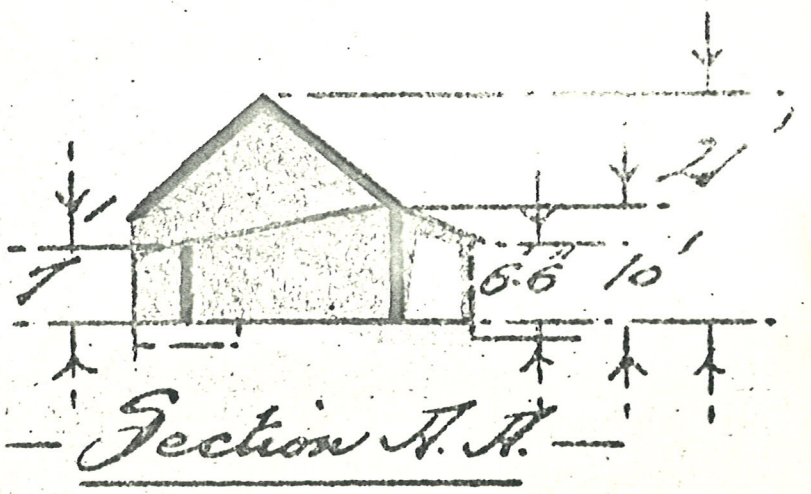
FLOOR



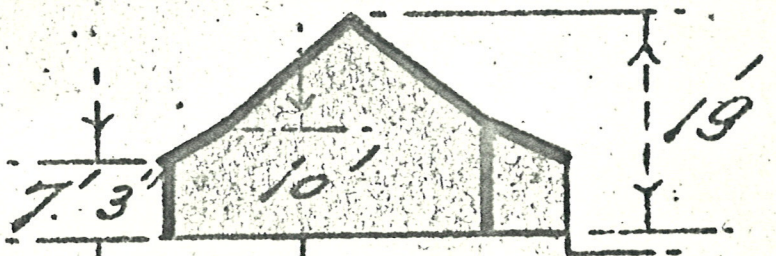


Demolished

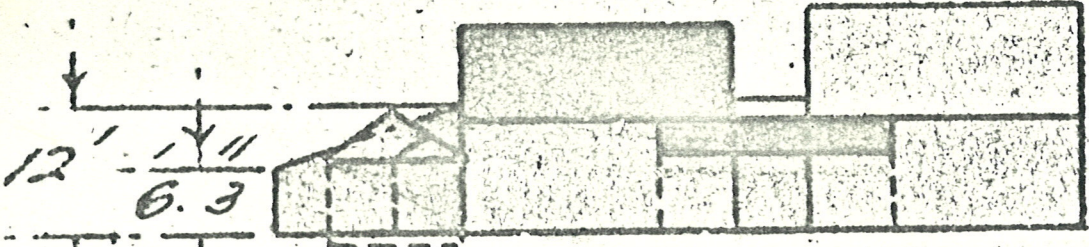
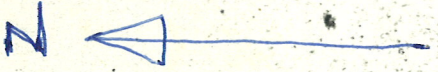
Plan



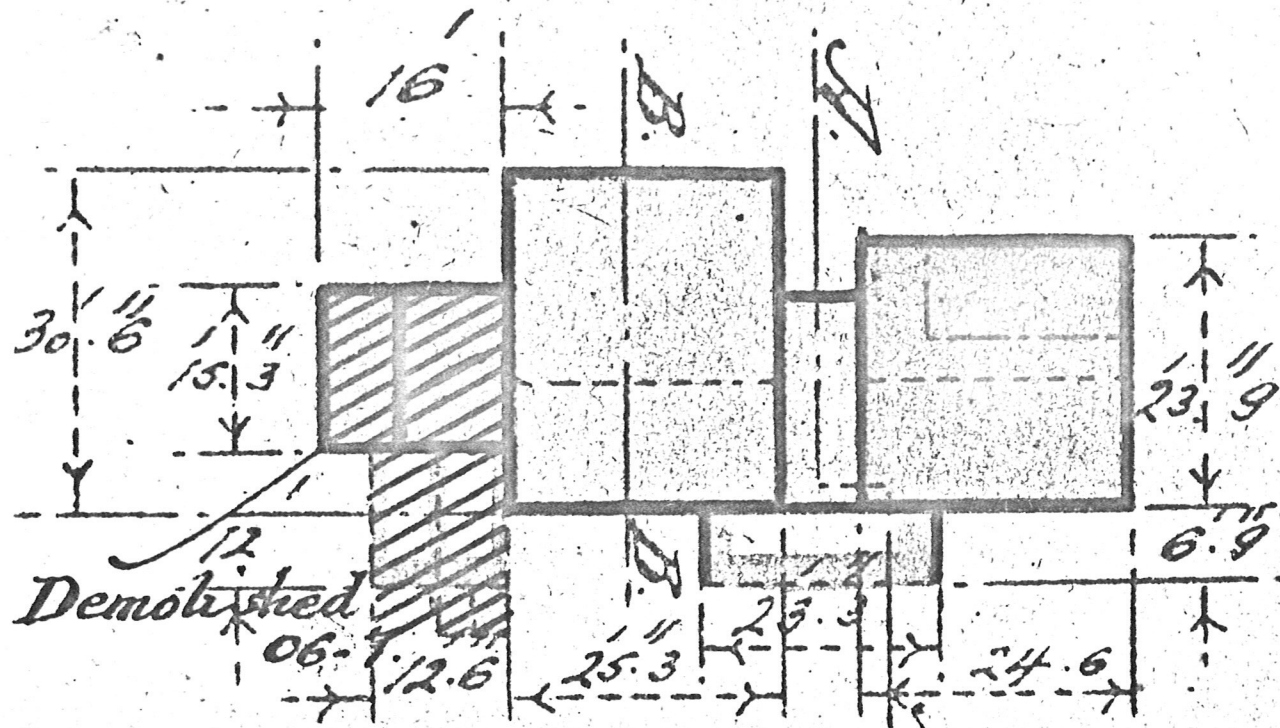
Section A.A.



Section B.B.

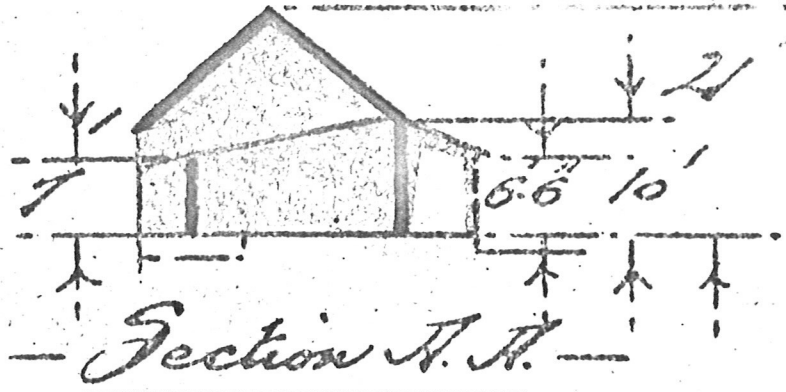


Front Elevation.

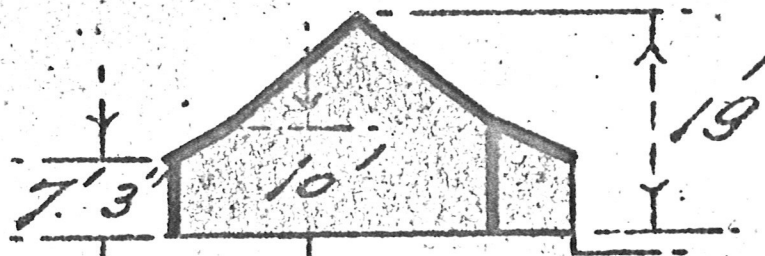


Demolished

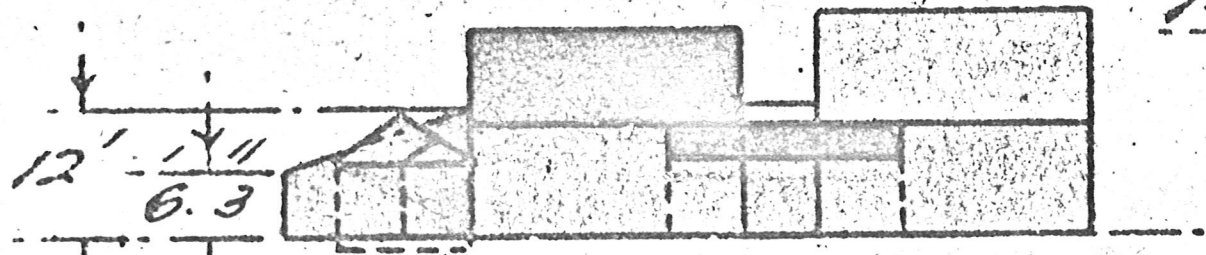
Plan



Section A.A.



Section B.B.



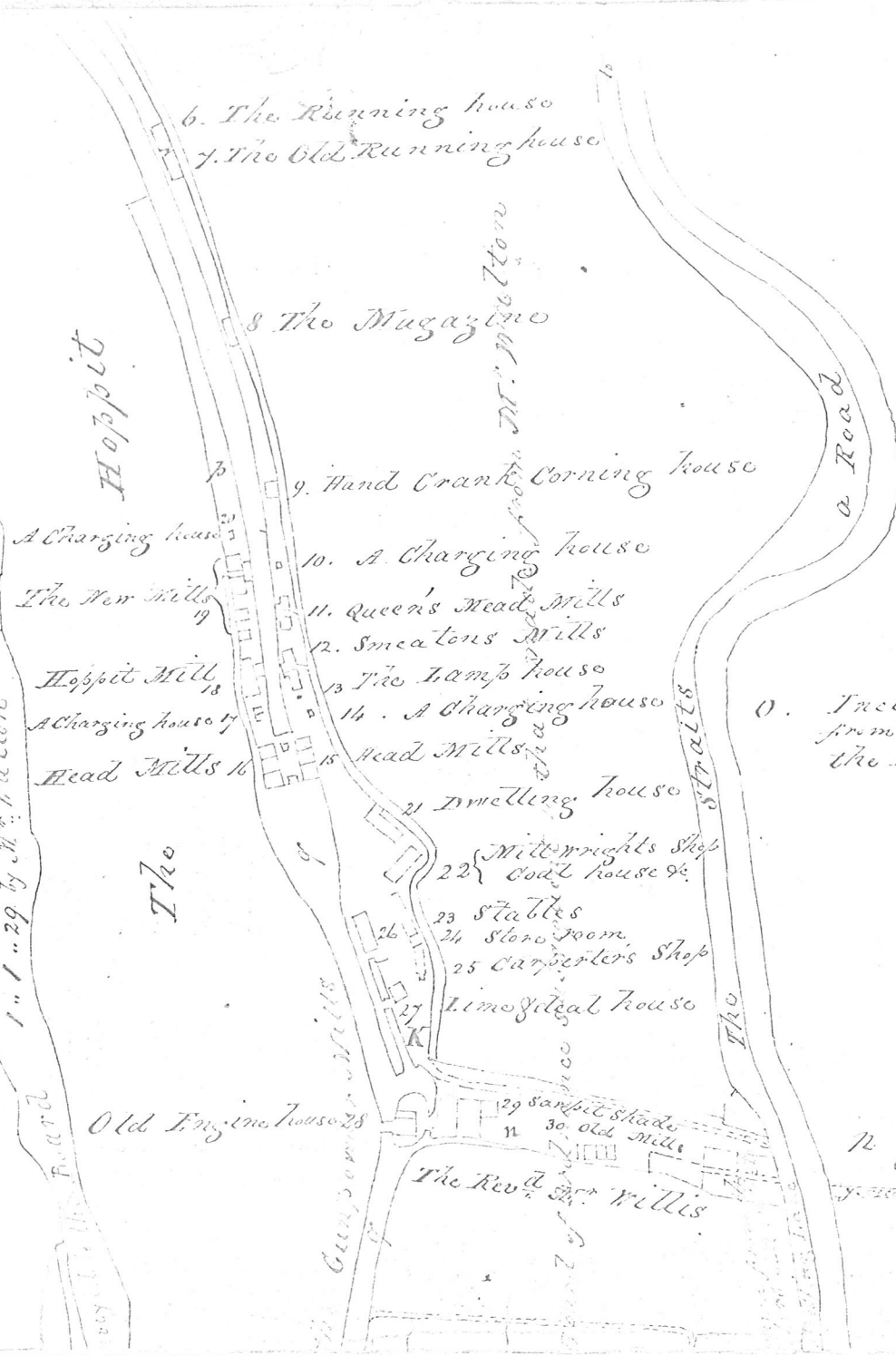
Front Elevation.

Marsh

Surveyed to the 1" 2" 26

Surveyed by Mr. Walton

1702



6. The Running house
 7. The Old Running house

8. The Magazine

9. Hand Crank Corning house

10. A Charging house

11. Queen's Mead Mills

12. Smeatons Mills

13. The Lamp house

14. A Charging house

15. Mead Mills

21. Dwelling house

22. Millwrights Shop
Cooper house 9c

23. Stables

24. Store room

25. Carpenter's Shop

27. Lime kiln house

28. Old Engine house

29. Sanpit shed

30. Old mill

The Rev. Mr. Willis

p. Including the Ground and
 Buildings on the West side
 of the River } 0. 1. 21

o. Including the Buildings and Ground
 from Gallows Gate by the upper Stove to
 the Bridge K, near the Old Engine house } 2. 0

n. Including Gardens Old Horse Mills
 and Old Engine house } 2. 0

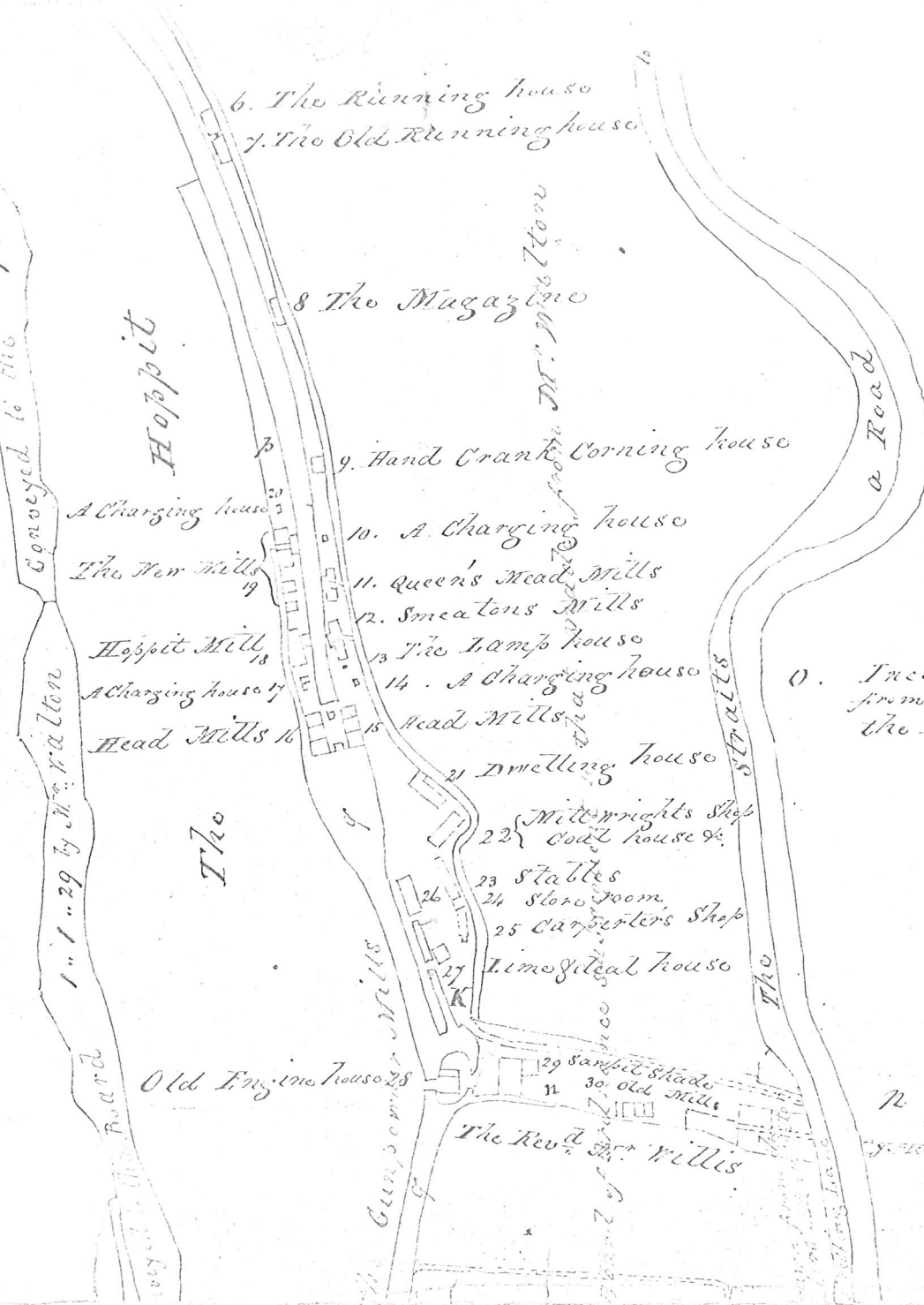
511

Belonging

Handwritten notes at the bottom right corner.

Marsh

Common



6. The Running house
7. The Old Running house

8. The Magazine

9. Hand Crank Corning house

10. A Charging house

11. Queen's Mead Mills

12. Smeatons Mills

13. The Lamp house

14. A Charging house

15. Head Mills

21. Dwelling house

Mitrewrights Shop

22. Coal house

23. Stables

24. Stone room

25. Carpenters Shop

Limestial house

Old Engine house

29. Slop shade

30. Old Mills

The Rev. Mr. Willis

The Gunpowder Mills

The Hopbit

The

The

a Road

p. Including the Ground and Buildings on the West side of the River

o. Including the Buildings and Ground from Callons Gate by the upper Stove to the Bridge K, near the Old Engine house

n. Including Gardens Old Horse Mills and Old Engine house

1" 2" 26 Board
conveyed to the
1" 1" 29 by Mr. Walton

Belonging

1
2
3
4
5
6
7
8
9
10
11
12
13
14
15
16
17
18
19
20
21
22
23
24
25
26
27
28
29
30

marsh

Common

Conveyed to the Board
1" 2" 26" Board
Conveyed to the Board
1" 1" 29" by Mr. Walton

Hoppit

The

Mr. Walton

Stables

Belonging

6. The Running house
7. The Old Running house

8 The Magazine

9. Hand Crank Corning House

10. A Charging house

11. Queen's Mead Mills

12. Smeaton's Mills

13 The Lamp house

14. A Charging house

15 Mead Mills

21 Dwelling house

22 Millwrights Shop
22.1 Coal house &c.

23 Stables

24 Store Room

25 Carpenters Shop

27 Lime & coal house

Old Engine House 28

29 Sample Stacks

30 Old Mills

The Rev. Dr. Willis

p. Including the Ground and Buildings on the West side of the River } 0. 1. 21

o. Including the Buildings and Ground from Gallows Gate by the upper Stave to the Bridge K, near the Old Engine House } 2. 0

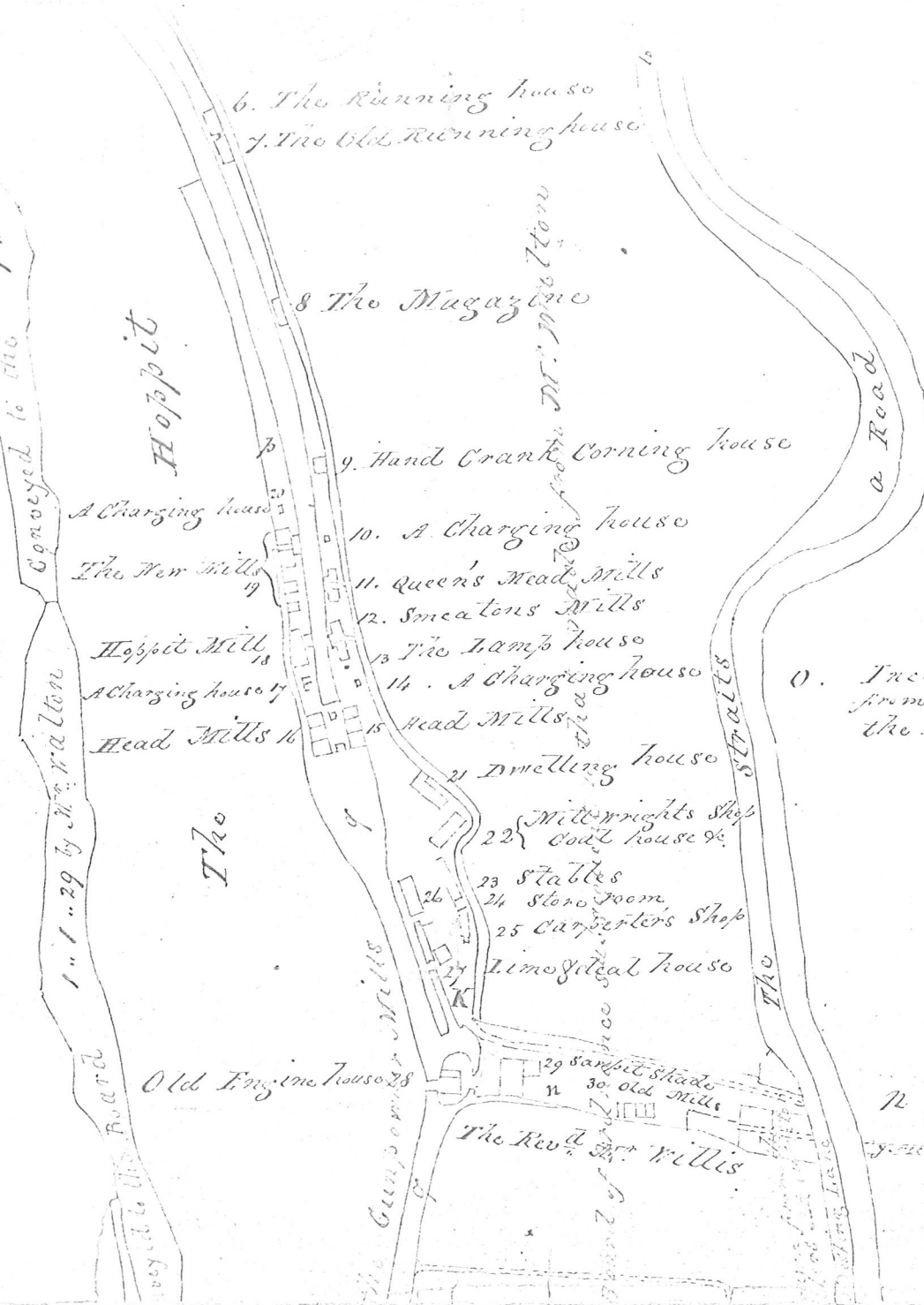
n. Including Gardens Old Horse Mills and Old Engine house

make
of the water

presented of issues
received from
the Rev. Dr. Willis

Marsh

Common



7. Including the Ground and Buildings on the West side of the River } 0. 1. 21

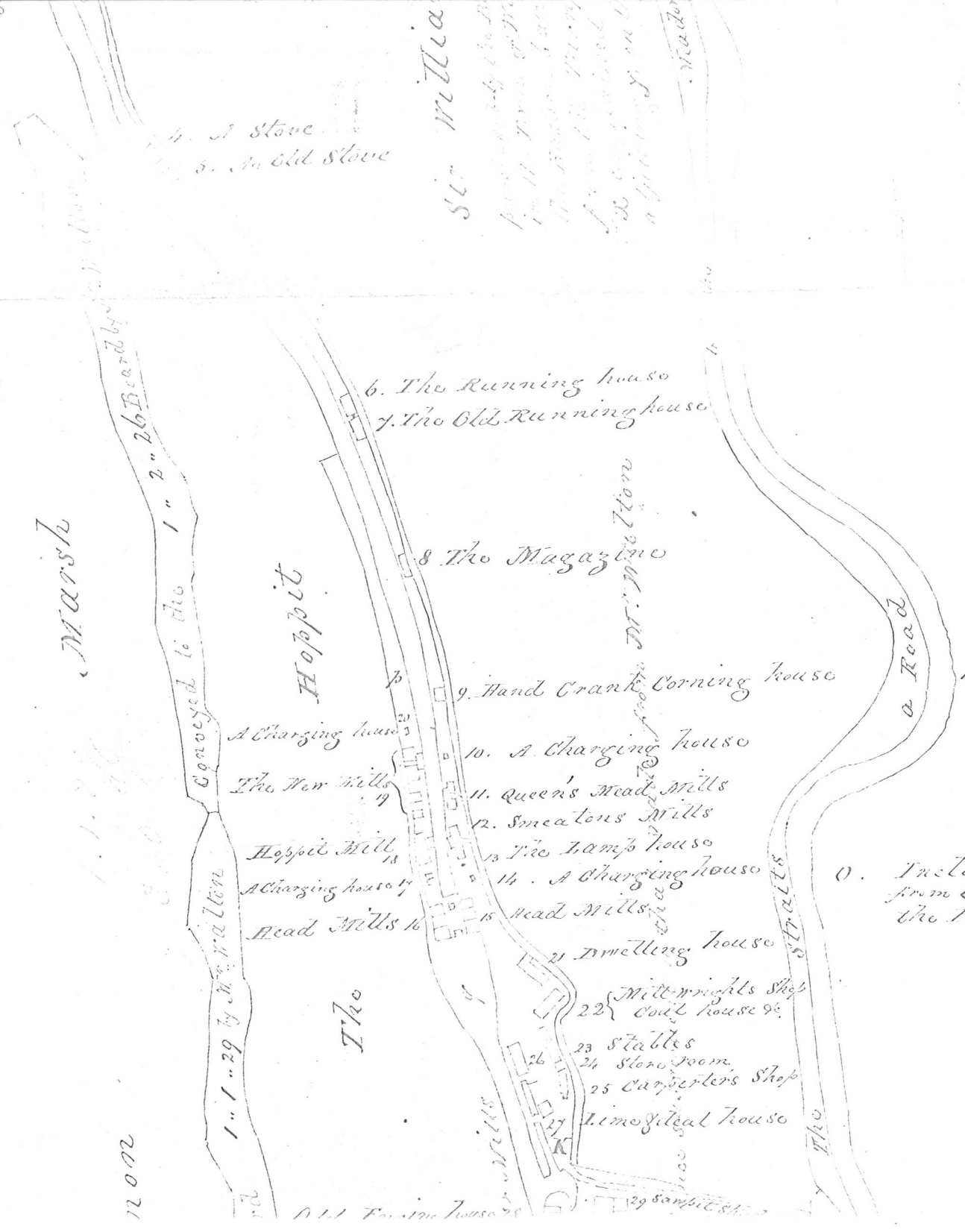
8. Including the Buildings and Ground from Gallons Gate by the upper Stove to the Bridge K, near the Old Engine house } 2. 0

9. Including Gardens Old Horse Mills and Old Engine house

11th Make
5th the water

Belonging

part of the
ground
of the
mill
is
belonging



4. A Stove
5. An Old Stove

See Millia
part of the
in 11. 12. 13. 14. 15.
The bridge
The mill
The mill
The mill
The mill

6. The Running house
7. The Old Running house

8. The Magazine

9. Hand Crank Corning house

10. A Charging house

11. Queen's Head Mills

12. Smearers Mills

13. The Lamb house

14. A Charging house

15. Head Mills

21. Dwelling house

22. Millwrights Shop

23. Coil house

24. Stables

25. Stone room

26. Carpenter's Shop

27. Lime kiln house

29. Sewer

Marsh

Hoppit

The

from Mr. Watson

a Road

Stalls

p. Including the Ground and Buildings on the west side of the River

o. Including the Buildings and Ground from Gallows Gate by the upper Stove to the Bridge K, near the Old Engine house

12002

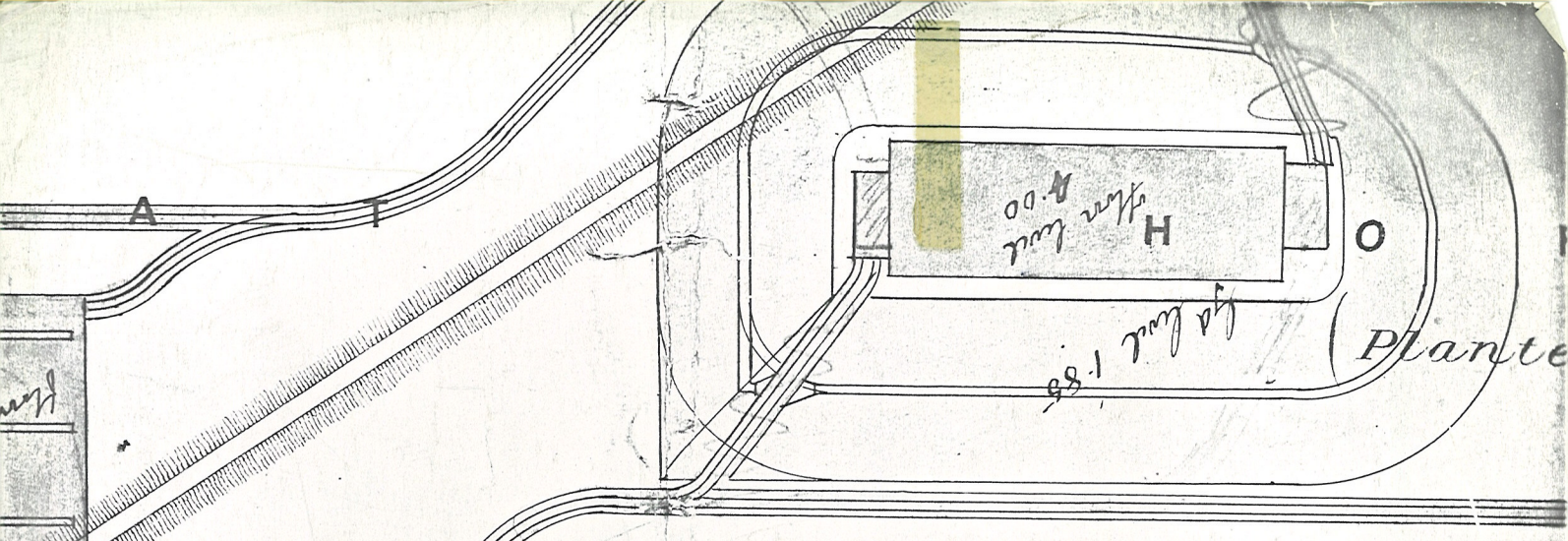
Conveyed to the 1st 2nd 26th Beardby

1st 1st 29th by Mr. Watson

Old Engine house

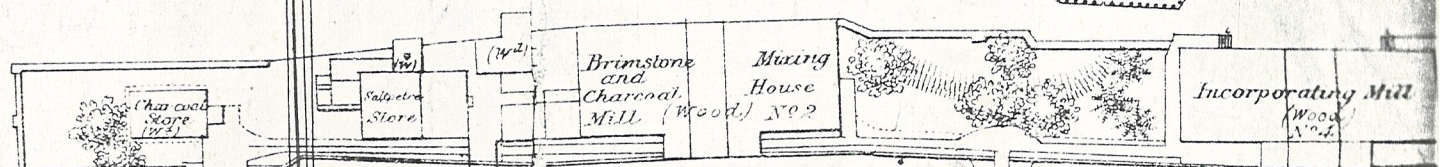
See note of the mill

Stalls

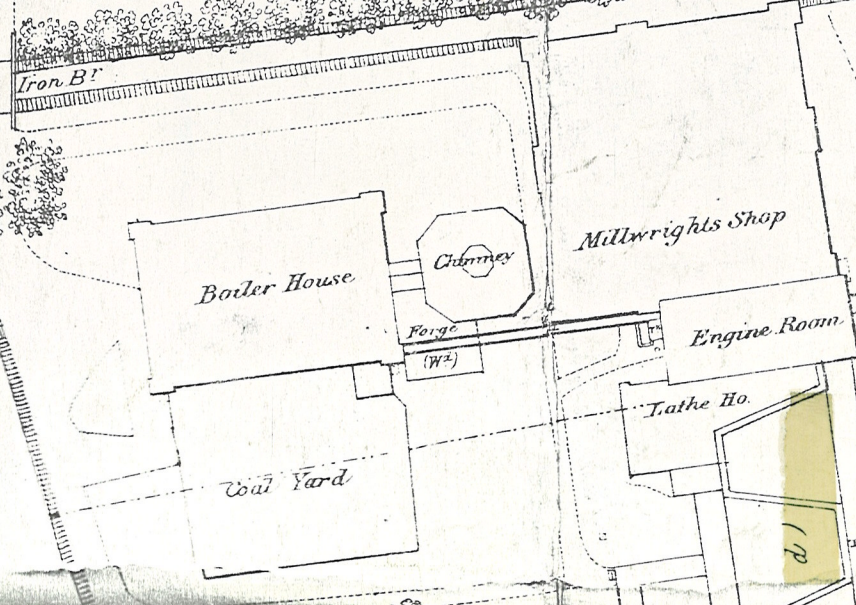
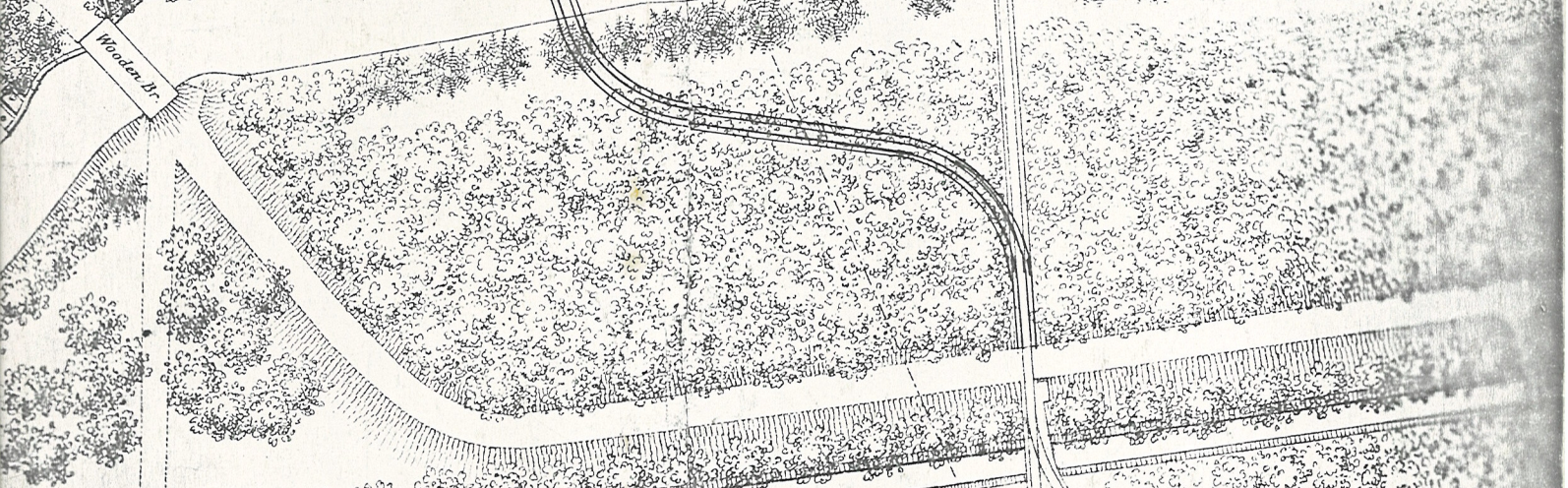
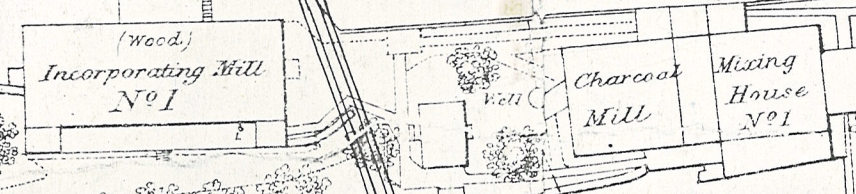


Scale 5/6 or 10'56 feet

The platforms up to this point are included in the Contract



Platform not included in Contract



PART H.- B. 25
CIVIL DESIGN OFFICE