

On Her Majesty's Service

WASC 1015

WASC 1015

WASC 1015

PORN FILMS ARE SMUGGLED INTO TOP-SECURITY SECRETS PLANT

PORNOGRAPHIC films have been smuggled into the top-security Ministry of Defence establishment in Waltham Abbey, says a police report.

The dirty movies were smuggled through the security gates of the Propellants, Explosives and Rocket Motors Establishment in sandwich boxes.

A hush-hush investigation has just been carried out by the Ministry of Defence's own police officers and a report is being sent to the Director of Public Prosecutions.

Unconfirmed leaks alleged this week that:

● An electronics worker smuggled Scandinavian blue movies and other obscene material into the secrets plant in a porn-peddling racket which has been going on for four years.

● Secret sex film shows

took place in a hideaway basement on the establishment.

TIP-OFF

It is believed the police investigation was ordered following a tip-off.

Police uncovered the porn-peddling three months ago. They discovered that an electronics worker, a married man, was buying pornographic films and other material—from Sweden, Denmark and Germany—through a catalogue.

The material was sent to an accommodation address the home of a fellow worker, and then smuggled into PERME inside employees' lunch boxes.

It is believed that on at least two occasions, Customs officers at Dover seized packages of the material en route to the accommodation address.

When the Ministry of Defence police officers questioned establishment staff they learned that the

smuggling of the material had been going on since 1976.

QUESTIONED

A spokesman for the Ministry of Defence said on Tuesday: "Our police have investigated the matter, employees have been questioned and a report has been sent to the Director of Public Prosecutions."

When asked if the discovery of pornography smuggling presented a security risk, the spokesman said: "I don't think you

could class anyone as a security risk because he reads pornographic material."

The spokesman said the person concerned had access only to "lower-class" information, explaining: "For example, the Ministry of Defence telephone directory."

Pornographic film shows are alleged to have been held in a basement inside the establishment. However, the police were unable to confirm this.

WT 15/2/80

PORN FILMS ARE SMUGGLED INTO TOP-SECURITY SECRETS PLANT

PORNOGRAPHIC films have been smuggled into the top-security Ministry of Defence establishment in Waltham Abbey, says a police report.

The dirty movies were smuggled through the security gates of the Propellants, Explosives and Rocket Motors Establishment in sandwich boxes.

A hush-hush investigation has just been carried out by the Ministry of Defence's own police officers and a report is being sent to the Director of Public Prosecutions.

Unconfirmed leaks alleged this week that:

● An electronics worker smuggled Scandinavian blue movies and other obscene material into the secrets plant in a porn-peddling racket which has been going on for four years.

● Secret sex film shows

place in a hideaway basement on the establishment.

TIP-OFF

It is believed the police investigation was ordered following a tip-off.

Police uncovered the porn-peddling three months ago. They discovered that an electronics worker, a married man, was buying pornographic films and other material—from Sweden, Denmark and Germany—through a catalogue.

The material was sent to an accommodation address, the home of a fellow worker, and then smuggled into PERME inside employees' lunch boxes.

It is believed that on at least two occasions, Customs officers at Dover seized packages of the material en route to the accommodation address.

When the Ministry of Defence police officers questioned establishment staff they learned that the

smuggling of the material had been going on since 1976.

QUESTIONED

A spokesman for the Ministry of Defence said on Tuesday: "Our police have investigated the matter, employees have been questioned and a report has been sent to the Director of Public Prosecutions."

When asked if the discovery of pornography smuggling presented a security risk, the spokesman said: "I don't think you

could class anyone as a security risk because he reads pornographic material."

The spokesman said the person concerned had access only to "lower-class" information, explaining: "For example, the Ministry of Defence telephone directory."

Pornographic film shows are alleged to have been held in a basement inside the establishment. However, the police were unable to confirm this.

Boy aged 16 is accused of taking part in £10,000 theft

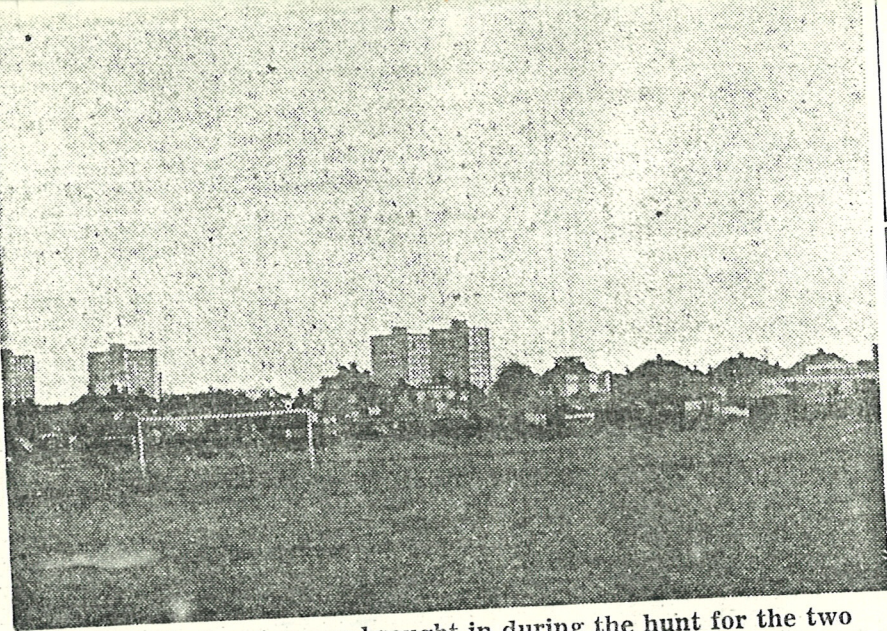
A 16-year-old boy was remanded in custody by Epping magistrates on Monday accused of taking part in a £10,000 jewellery and furs theft from a bungalow in Mott Street, High Beech, two weeks ago.

The boy, from Bow, East London, is also accused of burgling another property in Mott Street. He was remanded to appear in court again on Wednesday, February 20.

WALTHAM CROSS AND
CHESHUNT TELEGRAPH

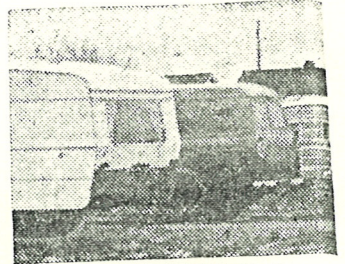
FRIDAY FEB. 15TH. 1980

(FRONT PAGE)



A police helicopter was brought in during the hunt for the two runaways.

gips towr



PORN FILMS ARE SMUGGLED INTO TOP-SECURITY SECRETS PLANT

PORNOGRAPHIC films have been smuggled into the top-security Ministry of Defence establishment in Waltham Abbey, says a police report.

The dirty movies were smuggled through the security gates of the Propellants, Explosives and Rocket Motors Establishment in sandwich boxes.

A hush-hush investigation has just been carried out by the Ministry of Defence's own police officers and a report is being sent to the Director of Public Prosecutions.

Unconfirmed leaks alleged this week that:

● An electronics worker smuggled Scandinavian blue movies and other obscene material into the secrets plant in a porn-peddling racket which has been going on for four years.

● Secret sex film shows

took place in a hideaway basement on the establishment.

TIP-OFF

It is believed the police investigation was ordered following a tip-off.

Police uncovered the porn-peddling three months ago. They discovered that an electronics worker, a married man, was buying pornographic films and other material—from Sweden, Denmark and Germany—through a catalogue.

The material was sent to an accommodation address, the home of a fellow worker, and then smuggled into PERME inside employees' lunch boxes.

It is believed that on at least two occasions, Customs officers at Dover seized packages of the material en route to the accommodation address.

When the Ministry of Defence police officers questioned establishment staff they learned that the

smuggling of the material had been going on since 1976.

QUESTIONED

A spokesman for the Ministry of Defence said on Tuesday: "Our police have investigated the matter, employees have been questioned and a report has been sent to the Director of Public Prosecutions."

When asked if the discovery of pornography smuggling presented a security risk, the spokesman said: "I don't think you

could class anyone as a security risk because he reads pornographic material."

The spokesman said the person concerned had access only to "lower-class" information, explaining: "For example, the Ministry of Defence telephone directory."

Pornographic film shows are alleged to have been held in a basement inside the establishment. However, the police were unable to confirm this.

Boy aged 16 is accused of taking part in £10,000 theft

A 16-year-old boy was remanded in custody by Epping magistrates on Monday accused of taking part in a £10,000 jewellery and furs theft from a bungalow in Mott Street, High Beech, two weeks ago.

The boy, from Bow, East London, is also accused of burgling another property in Mott Street. He was remanded to appear in court again on Wednesday, February 20.

The tow the are gips ing pou THE to a land Cros gere resid lors

Las camp Herf B O C mont ment had g to ol power

One O'Bry feeling who with th the ne structi "I am unde: return

A re see wi put up the fro the g back

Loc also getting junior partm the gip as soo

He a this far too around the De vironn else.

"The when lawyer

WALTHAM CROSS AND
CHESHUNT TELEGRAPH

FRIDAY FEB 15TH 1980 (FRONT PAGE)