

HN 228 a/b)

WASC 1012

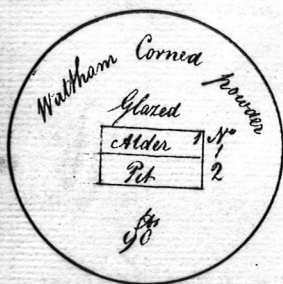
WASC 1012  
WAI 231

HN 228 a b



WASC 10

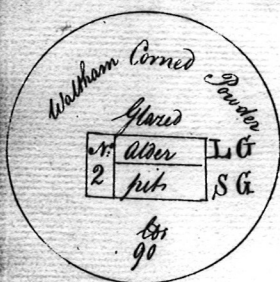
# The distinguishing Marks used upon Powder Barrels



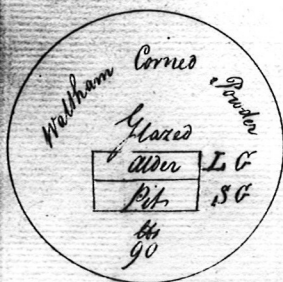
Corned powder from Mill Lake & dust of Green Composition prepared the large grain and small mixed and glazed.



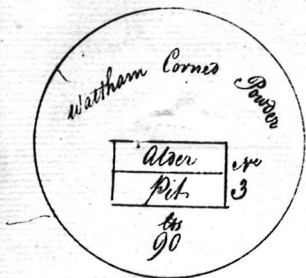
Corned powder from first dust prepared without being reworked under the Summers, the large and small grain mixed



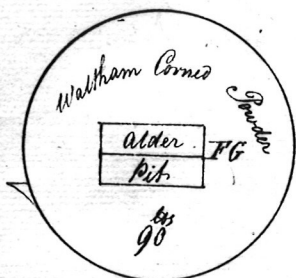
Corned powder from second dust prepared without being reworked the large and small grain mixed



Corned powder from the Mill Lake and dust of reworked dust prepared the large and small grain mixed.

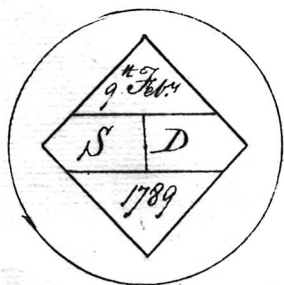


Corned powder fine grain, which has been separated from mixed grains of powder made of Green Composition



Corned powder fine grain which has been separated from powder made of different sorts of Dust

The word Alder in the upper part of the Figure denotes the Charcoal to have been made of Alder Wood; and the word Pit signifies that the Coal was made after the Common Pit Method; and when the word Cylinder is written under the name of the wood it signifies that the wood was made by distillation in an Iron Cylinder



This Mark is to be put upon the Bottom of each Barrel, SD means stove dried on such a day and Year as may be expressed at the Top and Bottom of the Figure