

WASC 784.

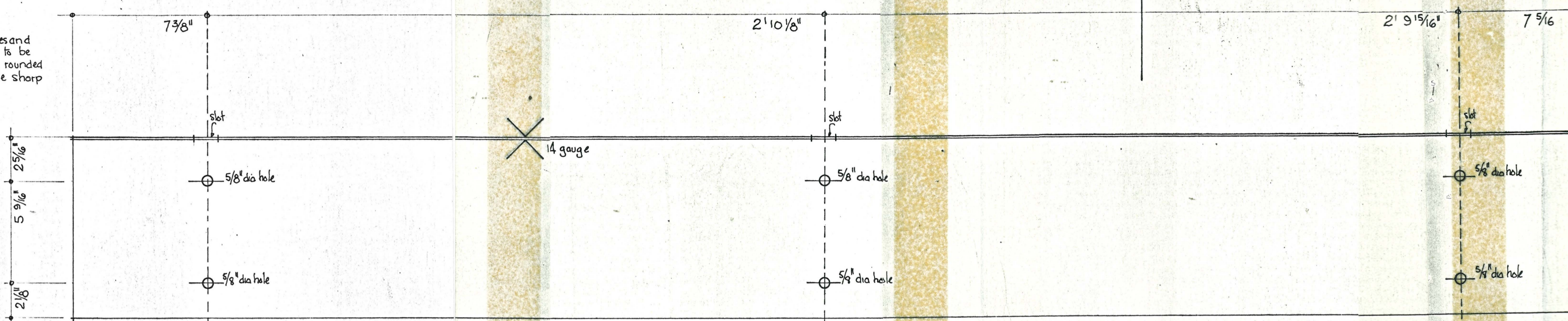
On Her Majesty's Service

WASC 784
WANBD 17

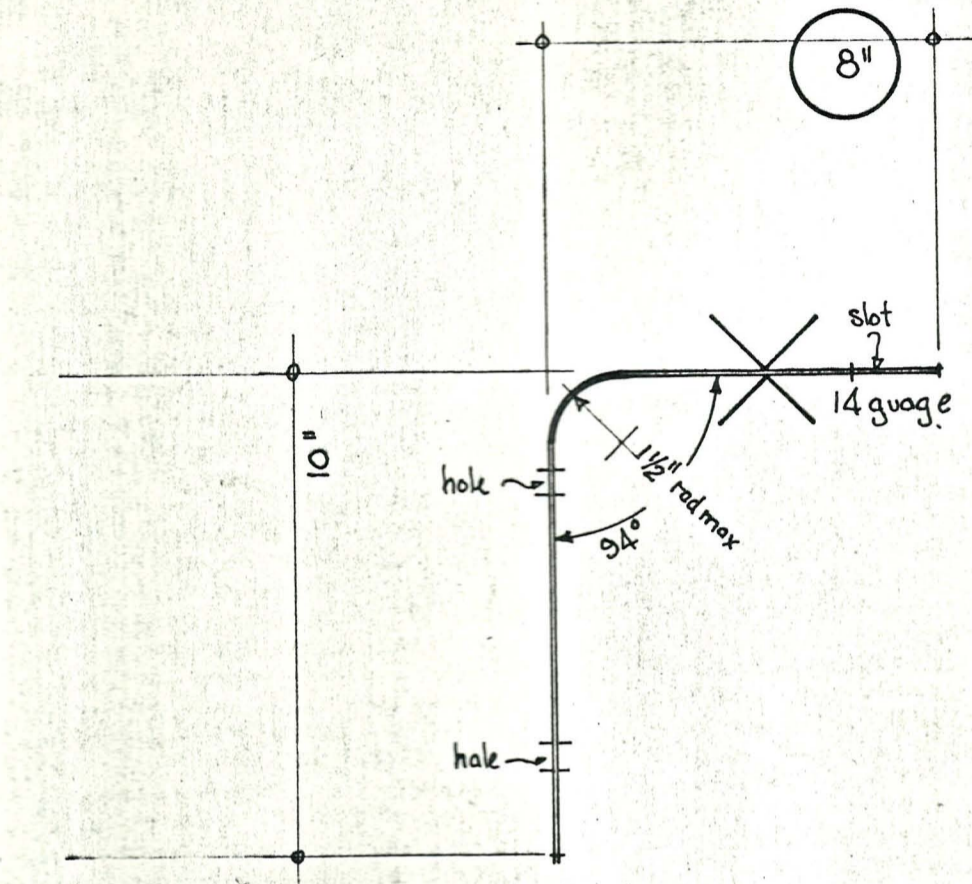
CODE No. 27-31

8" dimension shown thus are not critical but may be adjusted by up to 1/4" to suit material

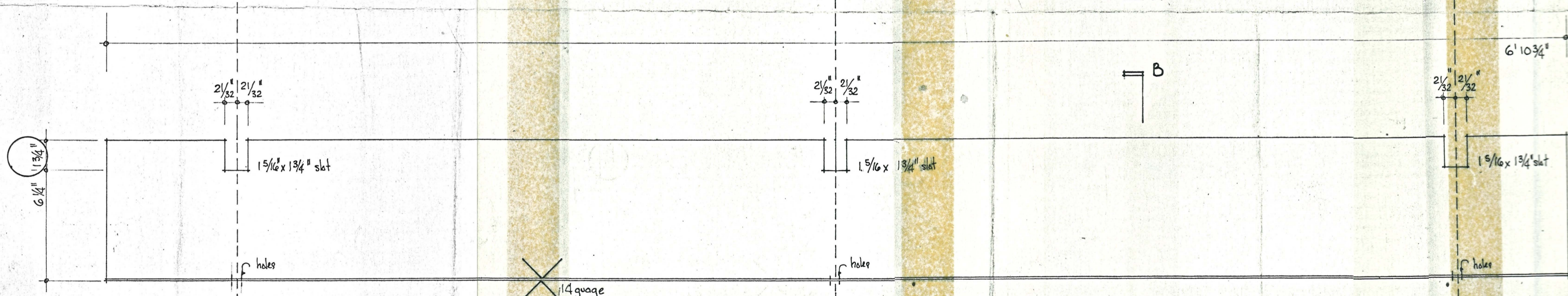
All arrises and corners to be slightly rounded to remove sharp edge.



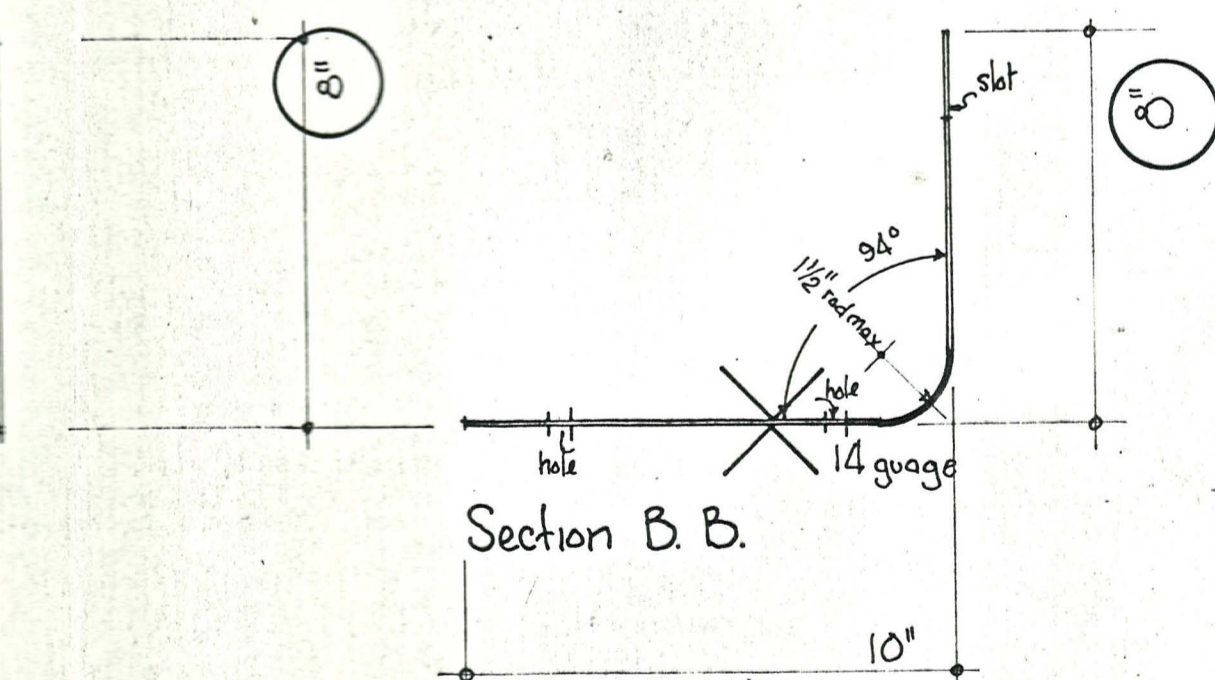
Plan



Section A.A.



Elevation



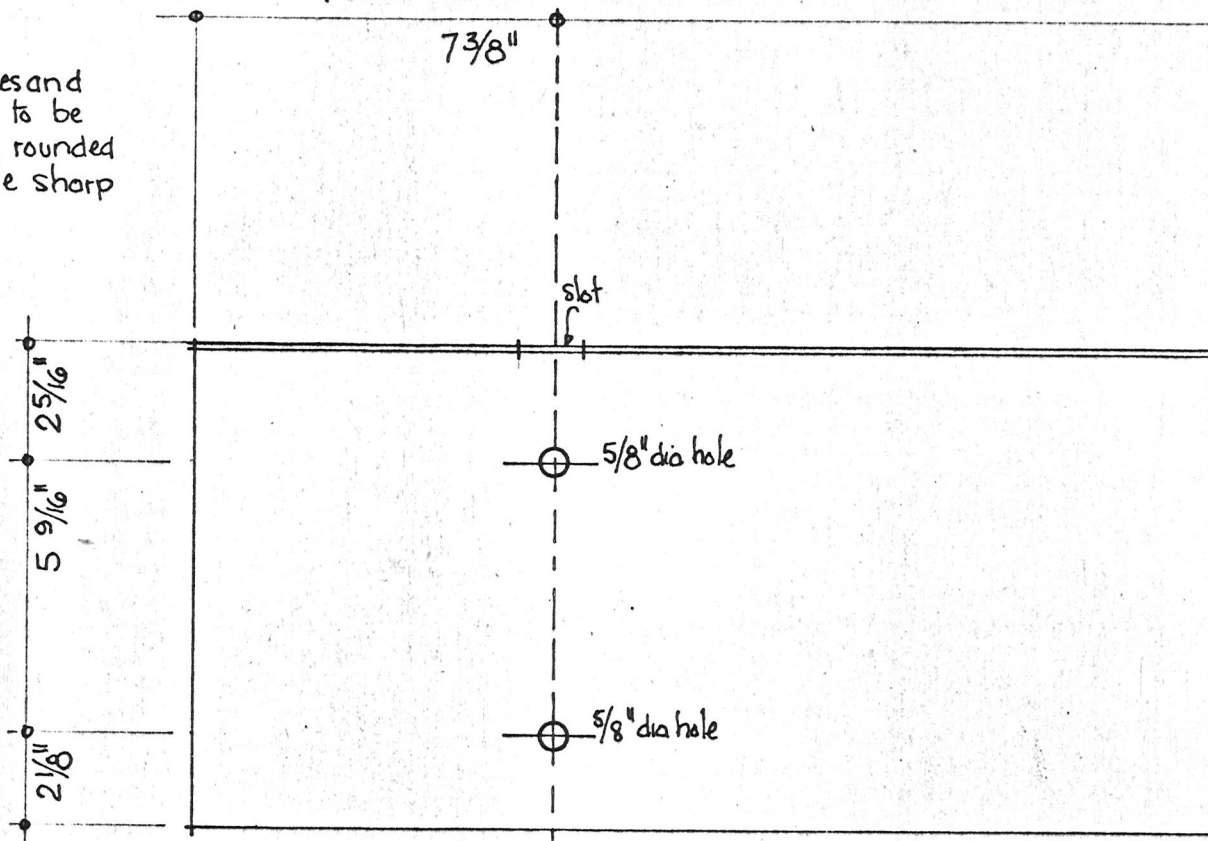
Section B.B.

VANES 64. Number required
Scale 1/4 FS

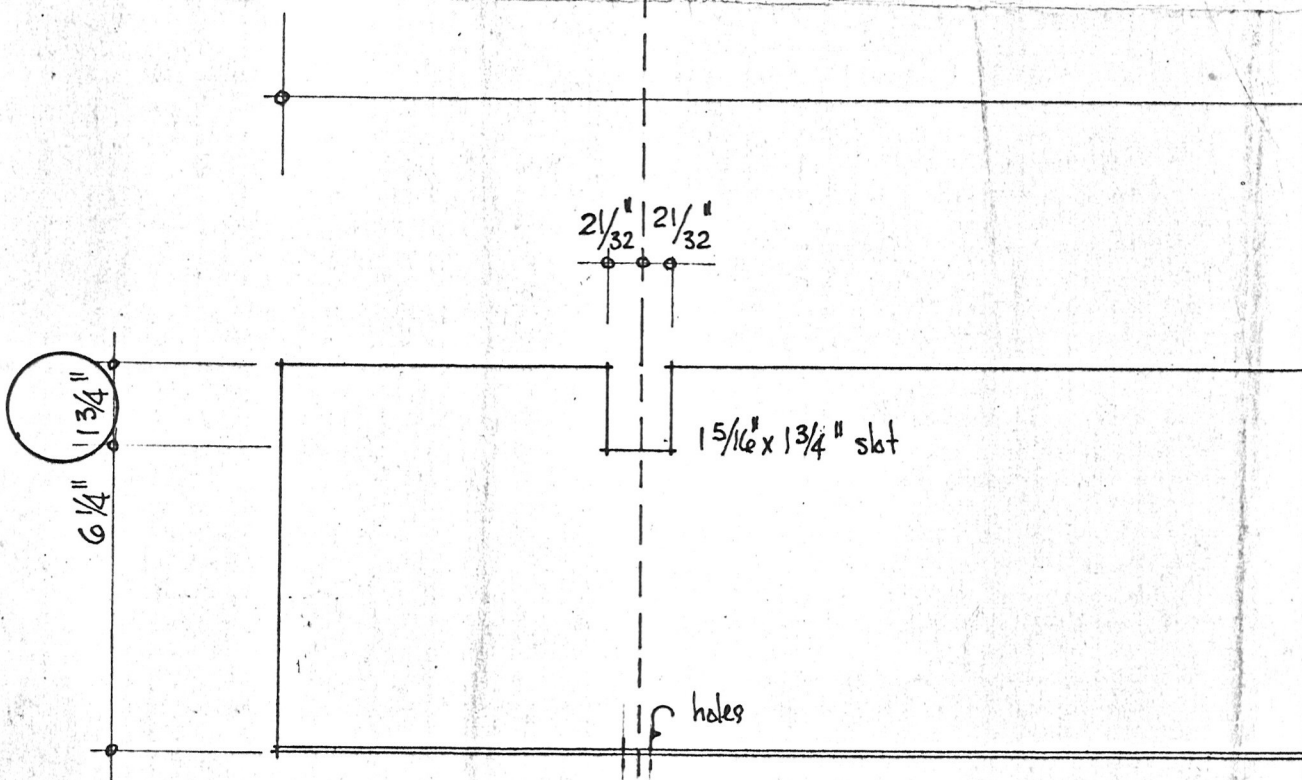


dimensions shown thus
are not critical but may be
adjusted by up to $\frac{1}{4}$ " to suit
material.

All arrises and
corners to be
slightly rounded
to remove sharp
edge.



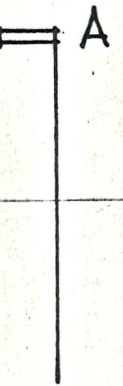
Plan



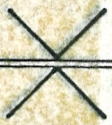
Elevation

VANES
Scale $\frac{1}{4}$ FS

64. Number required



$2'10\frac{1}{8}"$



14 gauge

slot

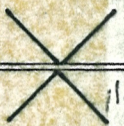
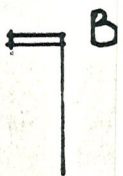
$\frac{5}{8}"$ dia hole

$\frac{5}{8}"$ dia hole



$\frac{2}{32}"$ $\frac{2}{32}"$

$1\frac{5}{16} \times \frac{1}{4}"$ slot



14 gauge

hole



A

2' 9¹⁵/₁₆"

7⁵/₁₆"

slot

5/8" dia hole

5/8" dia hole

A

6' 10³/₄"

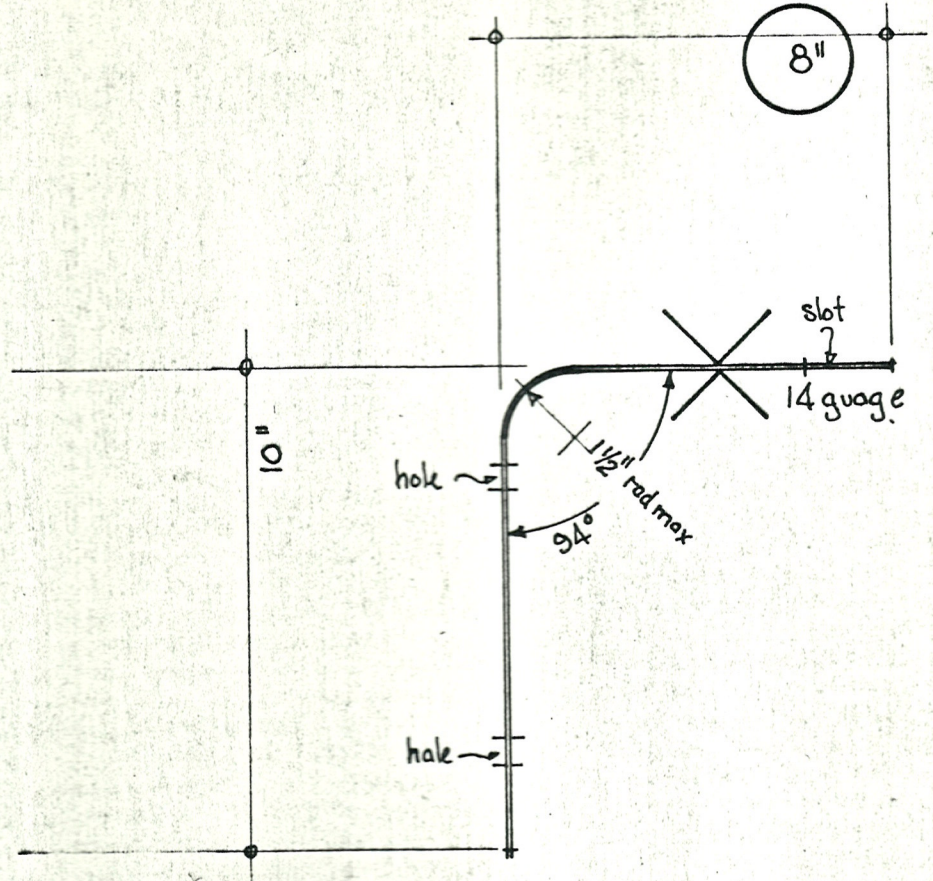
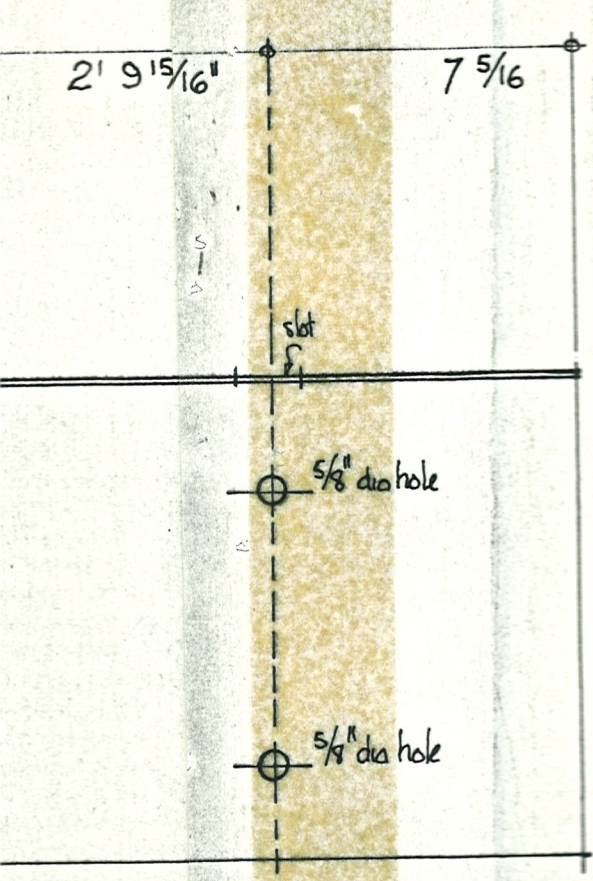
B

2¹/₃₂" 2¹/₃₂"

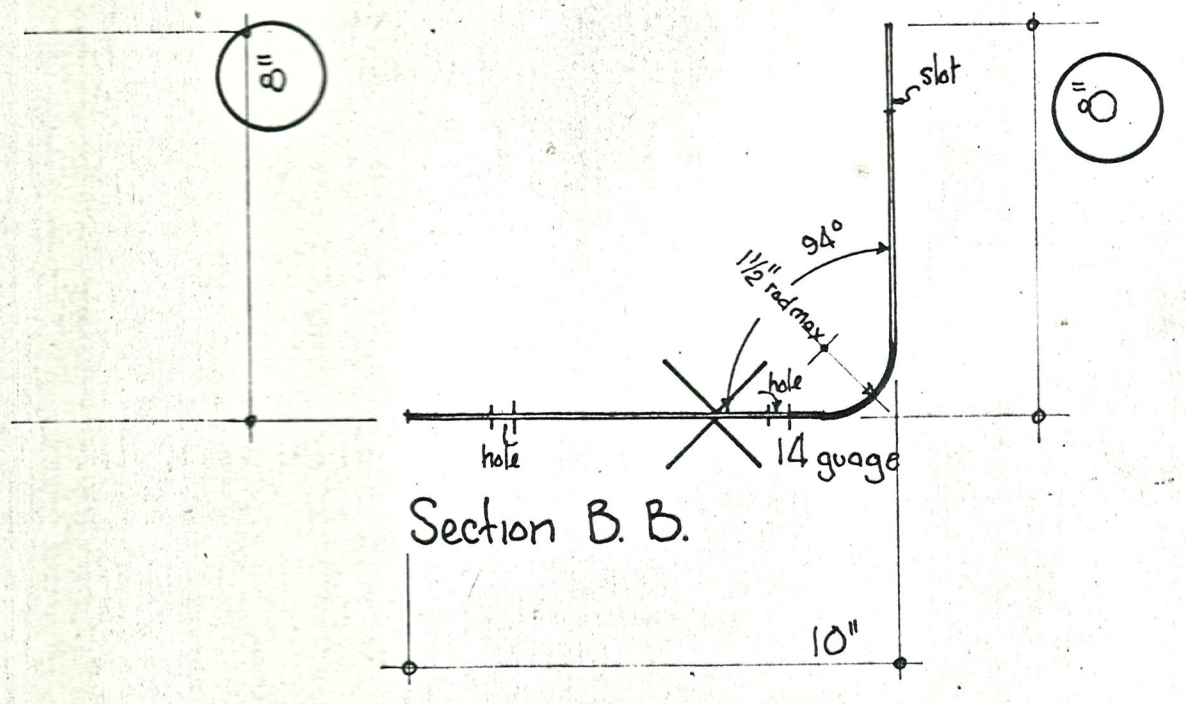
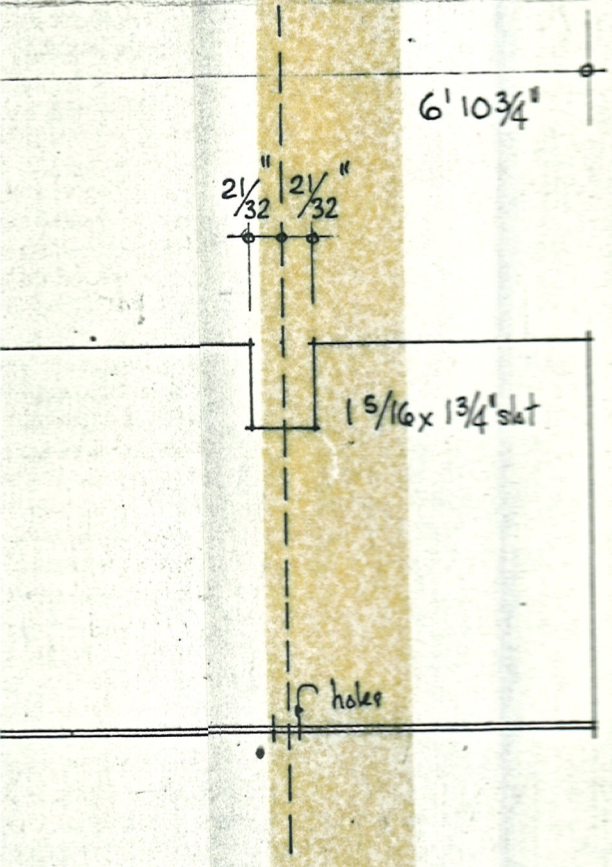
1⁵/₁₆ x 1³/₄" slot

holes

B



Section A.A.



Section B.B.