

# On Her Majesty's Service

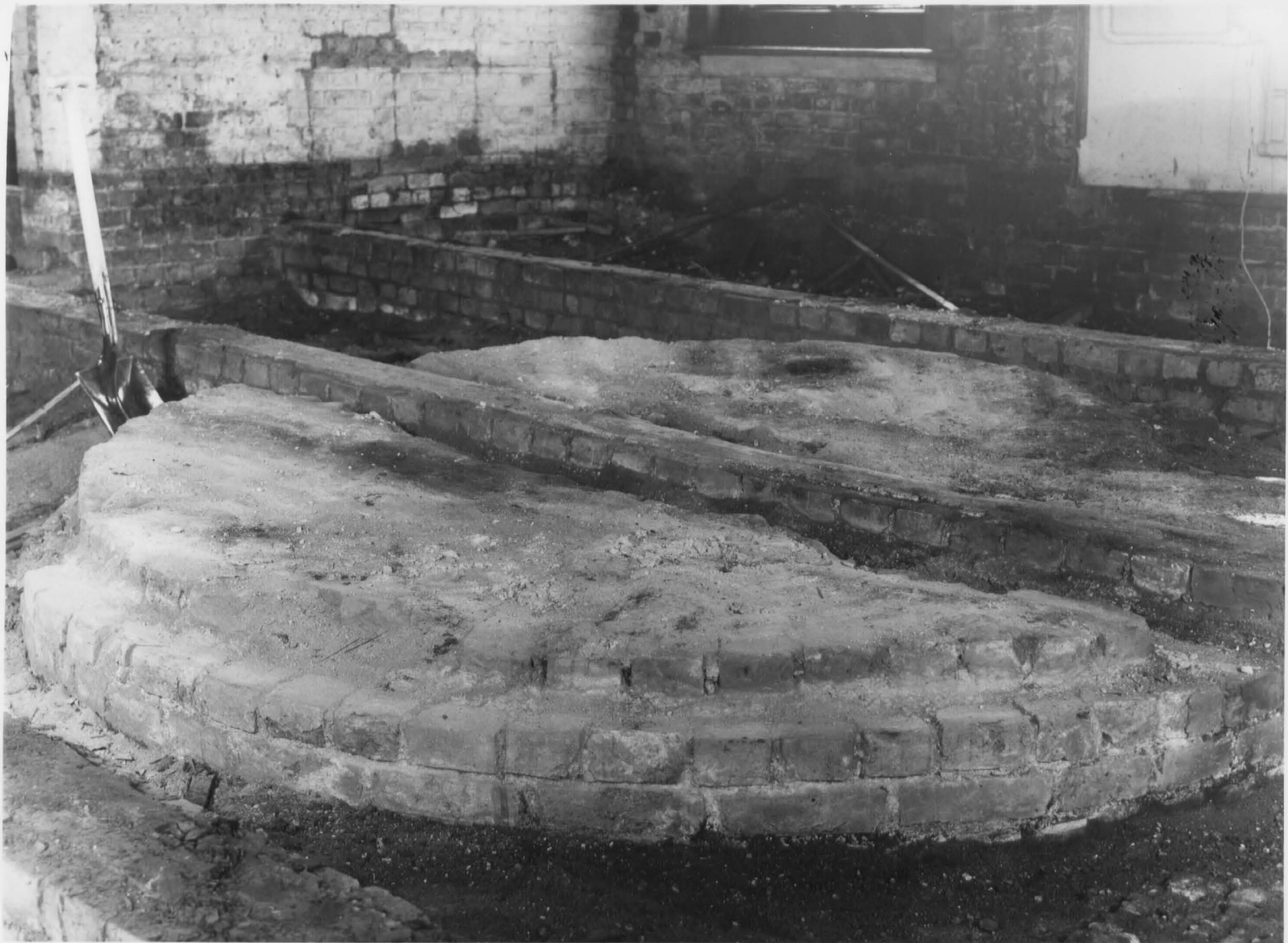
WASC 176  
WAI 66

DEC 1963

ERDE NORTH SITE - TWO  
CIRCULAR BRICK STRUCTURES  
UNCOVERED DURING  
DEMOLITION OF A203?  
HORSE MILLS. 3 b/w PHOTOS  
PLAN + DESCRIPTION









December 1963. Two circular brick structures uncovered during demolition of A 203 etc. Stores buildings. Three photographs and attached plan showing approx. dimensions and locations.

On being uncovered they were examined by Engineer and Library staff but this did not reveal any evidence of their origin or purpose. The central portion of each had been partly cut away and the later foundations shown in the photograph as passing through them had been built on to them.

Their positions seem to coincide with that of the "three horse mills" depicted in the 1735 drawing by R. West in Farmer's History and it is supposed that these are the foundations of two of them. The third was supposed to be under the concrete floor of the A203 building and no attempt was made to locate it.

- ← Approx. camera directions
- - - Position of later foundations
- ⊗ Approx. positions of circular structures.  
Diam. approx 9 feet.  
Distance between centres, 18 feet

Jan. 1964

JRS